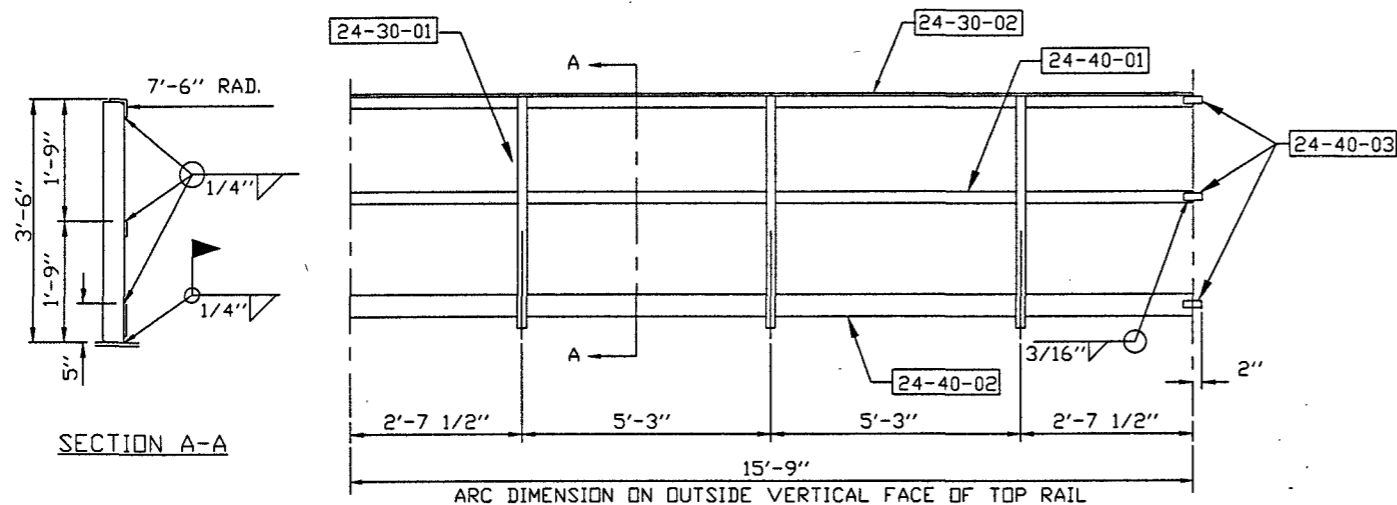
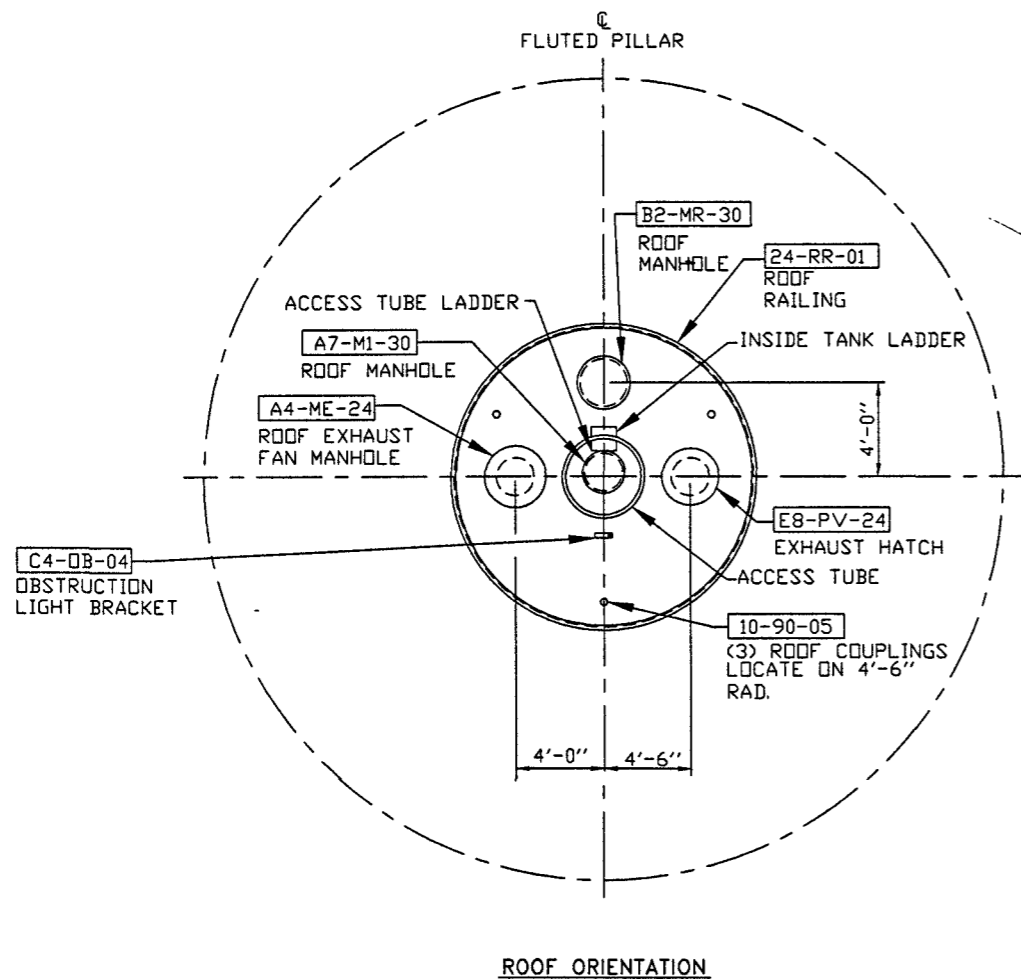


BILL OF MATERIAL					
SUB-ASSY NO	PART NO	QTY	DESCRIPTION	MAT'L. REQ'D.	PC WT LBS
24-RR-01		3	ROOF RAILING		395
	24-30-01	3	RAILING POST	3" x 3" x 1/4" ANGLE x 3'-5 3/4" LG.	
	24-30-02	1	TOP RAIL	2 1/2" x 2 1/2" x 1/4" ANGLE x 15'-9" LG.	
	24-40-01	1	MID RAIL	3" x 3/8" BAR x 15'-9" LG.	
	24-40-02	1	TOE PLATE	4" x 1/4" BAR x 15'-9" LG.	
	24-40-03	3	SPLICE BAR	1 1/2" x 1/4" BAR x 4" LG.	



SECTION A-A

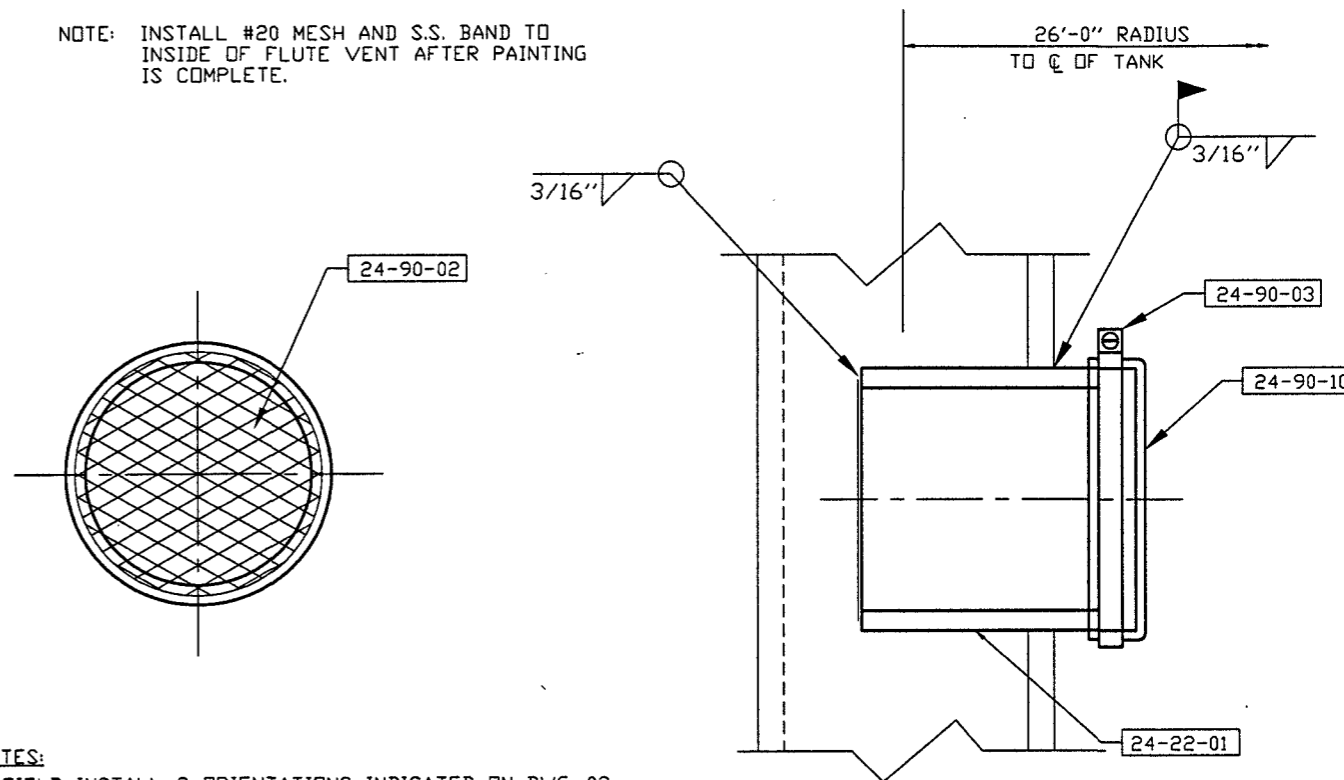
ARC DIMENSION ON OUTSIDE VERTICAL FACE OF TOP RAIL



ROOF ORIENTATION

BILL OF MATERIAL					
SUB ASS'Y NO.	PART NO.	QUANTITY	DESCRIPTION	MATERIAL REQ'D.	WEIGHT
24-VA-01		8	FLUTE VENT ASSEMBLY		75
	24-22-01	1	VENT BODY	10" EX. STRG. PIPE x 8" LG.	
	24-90-02	1	FLATTENED-EXPANDED METAL	1/2"-#16 GA x 10 1/4" DIA.	
	24-90-03	1	STAINLESS STEEL BAND	S.S. BAND FOR 10 3/4" OD PIPE	
	24-90-10	1	#20 MESH	#20 S.S. MESH 16" DIA.	

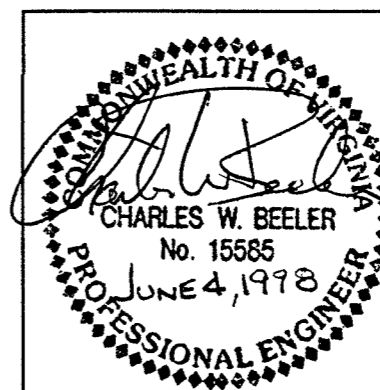
NOTE: INSTALL #20 MESH AND S.S. BAND TO INSIDE OF FLUTE VENT AFTER PAINTING IS COMPLETE.



NOTES:

1. FIELD INSTALL @ ORIENTATIONS INDICATED ON DWG. 02.
2. INSTALL (4) VENTS @ 5'-6" ABOVE GIRDER LEVEL 3.
3. INSTALL (4) VENTS 5'-6" ABOVE GIRDER LEVEL 1.

FLUTE VENT  
24-VA-01



REV.	BY:	DATE	REMARKS
<b>CALDWELL TANKS, INC.</b> LOUISVILLE, KY.			
BOTETOURT COUNTY, VA			
BY:	BAW/TB	TITLE:	ROOF RAILING AND FLUTE VENTS
DATE:	5-98	DRAWING NO.:	E-4291
			24