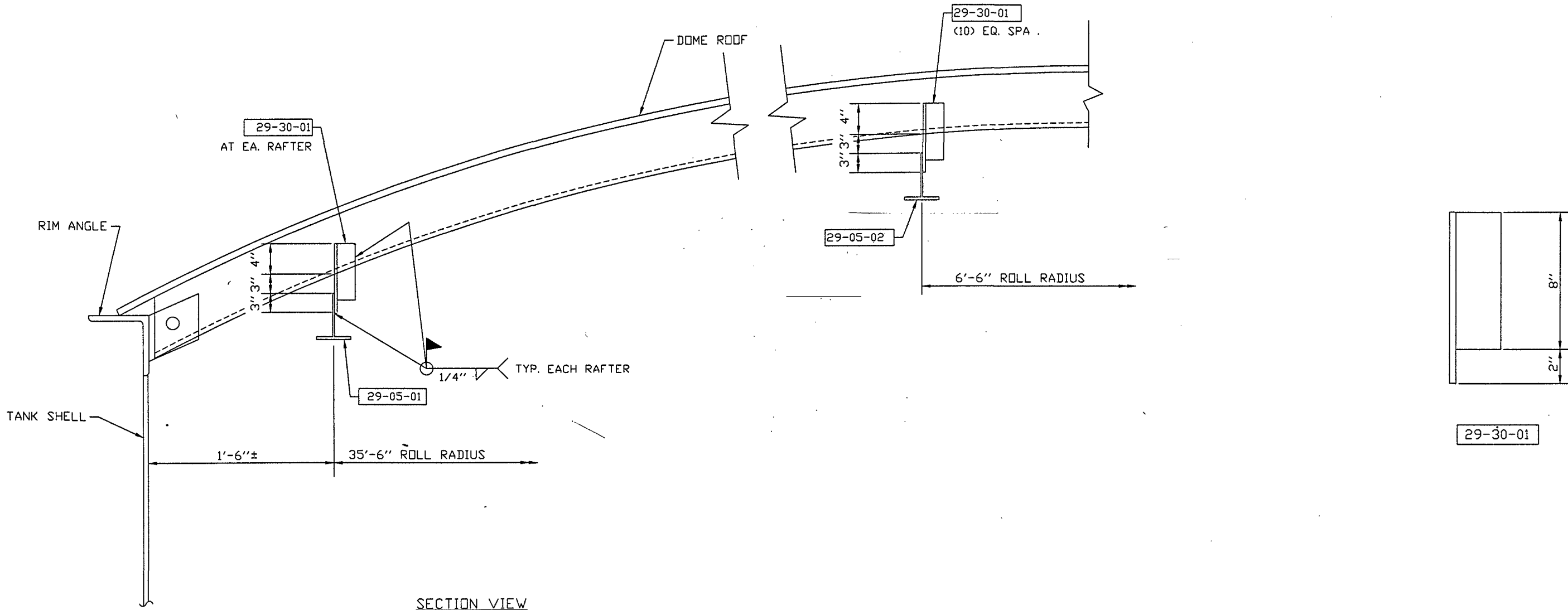
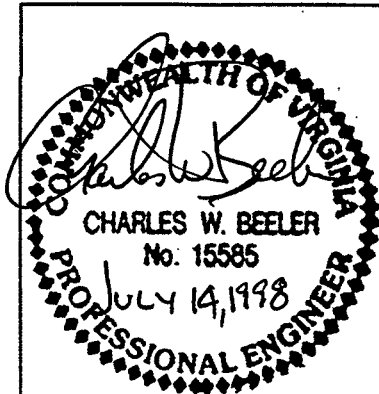


BILL OF MATERIAL					
SUB ASS'Y NO.	PART NO.	QUANTITY	DESCRIPTION	MATERIAL REQ'D.	WEIGHT
THE FOLLOWING ITEMS ARE TO BE SHIPPED LOOSE					
	29-05-01	14	STRUCTURAL TEES x 15'-11 3/16" FINISHED LENGTH	HWT7 x 13 x 20'-0" LG.	220
	29-30-01	50	ANGLE	3" x 3" x 3/8" x 10" LG.	6
	29-05-02	4	STRUCTURAL TEES x 10'-2 1/2" FINISHED LENGTH	WT6 x 9.5	90



NOTE: MAXIMUM SERVICE LOADING = 2000 LBS. (CONDITIONAL) (N)

*COMPLETE INSPECTION SHALL BE PERFORMED PRIOR TO USE OF RING. IN THE EVENT ANY TYPE OF DAMAGE HAS OCCURRED TO THE RING, SUPPORTS, OR CONNECTION, USE OF SAME SHALL BE PROHIBITED.



REV.	BY:	DATE	REMARKS
Caldwell Tanks, Inc Louisville, KY			
BOTETOURT COUNTY, VA			
BY: BAW/TB	TITLE: INTERIOR UTILITY RING DETAIL		
DATE: 7-98	DRAWING NO: E-4291	29	