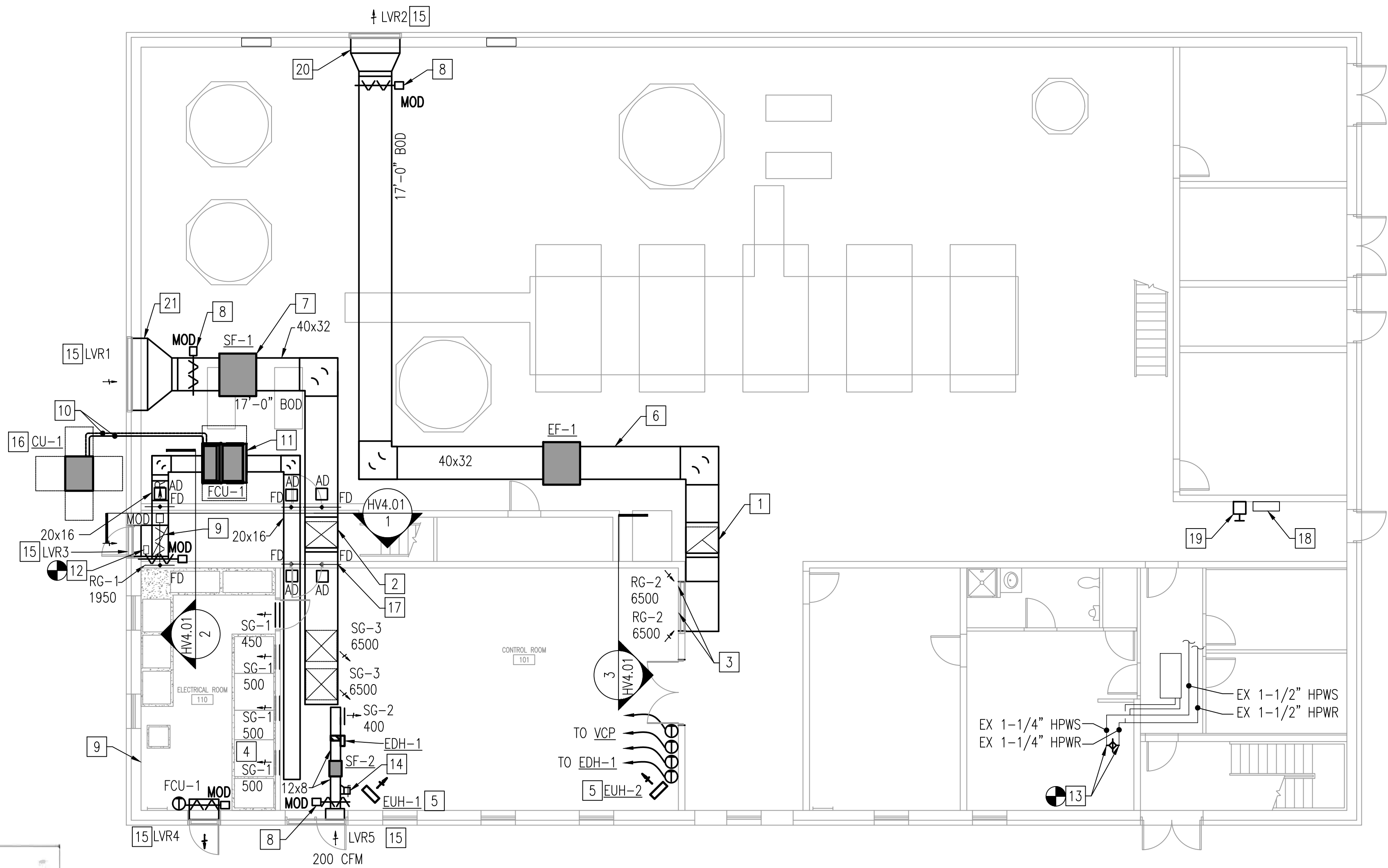


GENERAL SHEET NOTES

1. REFER TO DRAWING HV0.01 FOR LEGEND AND ABBREVIATIONS.

SHEET KEYNOTES

- 1 ROUTE 40X32 EXHAUST DUCT DOWN AND CONTINUE AS SHOWN BELOW 12'-0" AFF CEILING IN THIS AREA. INSTALL REMOVABLE TDC FLANGE IN VERTICAL SO THAT PORTION OF DUCT IN CORRIDOR MAY BE REMOVED AS REQUIRED TO ALLOW LARGE EQUIPMENT IN THIS AREA. REFER TO SECTION 3/HV4.01.
- 2 ROUTE 40X32 SUPPLY DUCT DOWN AND CONTINUE AS SHOWN BELOW 12'-0" AFF CEILING IN THIS AREA.
- 3 MOUNT SIDEWALL RETURN GRILLES SIDE BY SIDE AS HIGH AS POSSIBLE ON WALL. REFER TO SECTION 3/HV4.01.
- 4 MOUNT SUPPLY GRILLE AS HIGH AS POSSIBLE ON WALL. TYPICAL.
- 5 MOUNT UNIT HEATER AT 9'-0" AFF.
- 6 ROUTE EXHAUST DUCT AT 17'-0" AFF THROUGH EXISTING EQUIPMENT ROOM AND TERMINATE AT PLENUM BOX BEHIND LOUVER.
- 7 ROUTE SUPPLY DUCT AT 17'-0" AFF THROUGH EXISTING EQUIPMENT ROOM AND TERMINATE AT PLENUM BOX LOUVER.
- 8 MOTORIZED DAMPER TO OPEN WHEN ASSOCIATED FAN IS ENERGIZED. REFER TO CONTROL DIAGRAM ON SHEET HV5.01.
- 9 MOTORIZED DAMPER TO OPEN WHEN UNIT ENTERS ECONOMIZER MODE. REFER TO CONTROL DIAGRAM ON SHEET HV5.01.
- 10 RS/RL. SIZE AND CONFIGURATION SHALL BE IN ACCORDANCE WITH MANUFACTURER'S RECOMMENDATION.
- 11 MOUNT FCU-1 AT 9'-8" AFF.
- 12 ROUTE NEW 10X6 OA DUCT UP FROM PLENUM BEHIND LOUVER AND CONNECT TO EXISTING 10X6 OA DUCT SERVING SECOND FLOOR.
- 13 REFER TO NOTE 4/HVD1.01 FOR REQUIREMENTS TO BALANCE EXISTING WATER SOURCE HEAT PUMP SYSTEM.
- 14 TERMINATE 8x8 DUCT WITH 1/4" BIRDSCREEN. BALANCE DUCT INLET TO 200 CFM.
- 15 REFER TO ARCHITECTURAL PLANS FOR LOUVER SIZE AND ELEVATION.
- 16 INSTALL CU-1 ON HOUSEKEEPING PAD. REFER TO SHEET S1.02.
- 17 PROVIDE ACCESS DOOR FOR FIRE DAMPER. TYPICAL.
- 18 APPROXIMATE LOCATION OF MAIN FIRE ALARM ANNUNCIATOR PANEL (SHOWN FOR REFERENCE).
- 19 PROVIDE HARDWIRED, MUSHROOM-TYPE EMERGENCY HVAC SHUTOFF SWITCH. INSTALL IN VICINITY OF MAIN FIRE ALARM ANNUNCIATOR PANEL. SWITCH SHALL BE EQUIPPED WITH MULTIPLE DRY CONTRACTS AS REQUIRED FOR MONITORING BY FIRE ALARM SYSTEM AND INTERFACE WITH INSTRUMENTATION CONTROLS SYSTEM.
- 20 5'-4"x5'-4"x12" DEEP SHEET METAL PLENUM. COORDINATE WITH ARCHITECTURAL LOUVER.
- 21 7'-4"x7'-4"x12" DEEP SHEET METAL PLENUM. COORDINATE WITH ARCHITECTURAL LOUVER.
- 22 SF-1, SF-2, AND EF-1 SHALL BE CONTROLLED THROUGH VENTILATION CONTROL PANEL (VCP). REFER TO INSTRUMENTATION DRAWINGS FOR ADDITIONAL INFORMATION.



HVAC FLOOR PLAN - NEW WORK
SCALE: 1/8" = 1'-0"



WESTERN VIRGINIA WATER AUTHORITY
601 South Jefferson Street, Suite 300
Roanoke, Virginia 24011

DES:	NAB	SCALE:	1/8" = 1'-0"
DRAWN:	NAB	HORIZ:	N/A
CHECK:	CAH	VERT:	N/A
DATE:	1/24/20		

CRYSTAL SPRING
PUMP STATION RELOCATION

HVAC FLOOR PLAN - NEW WORK

DRAWING
HV1.01

SHEET
46