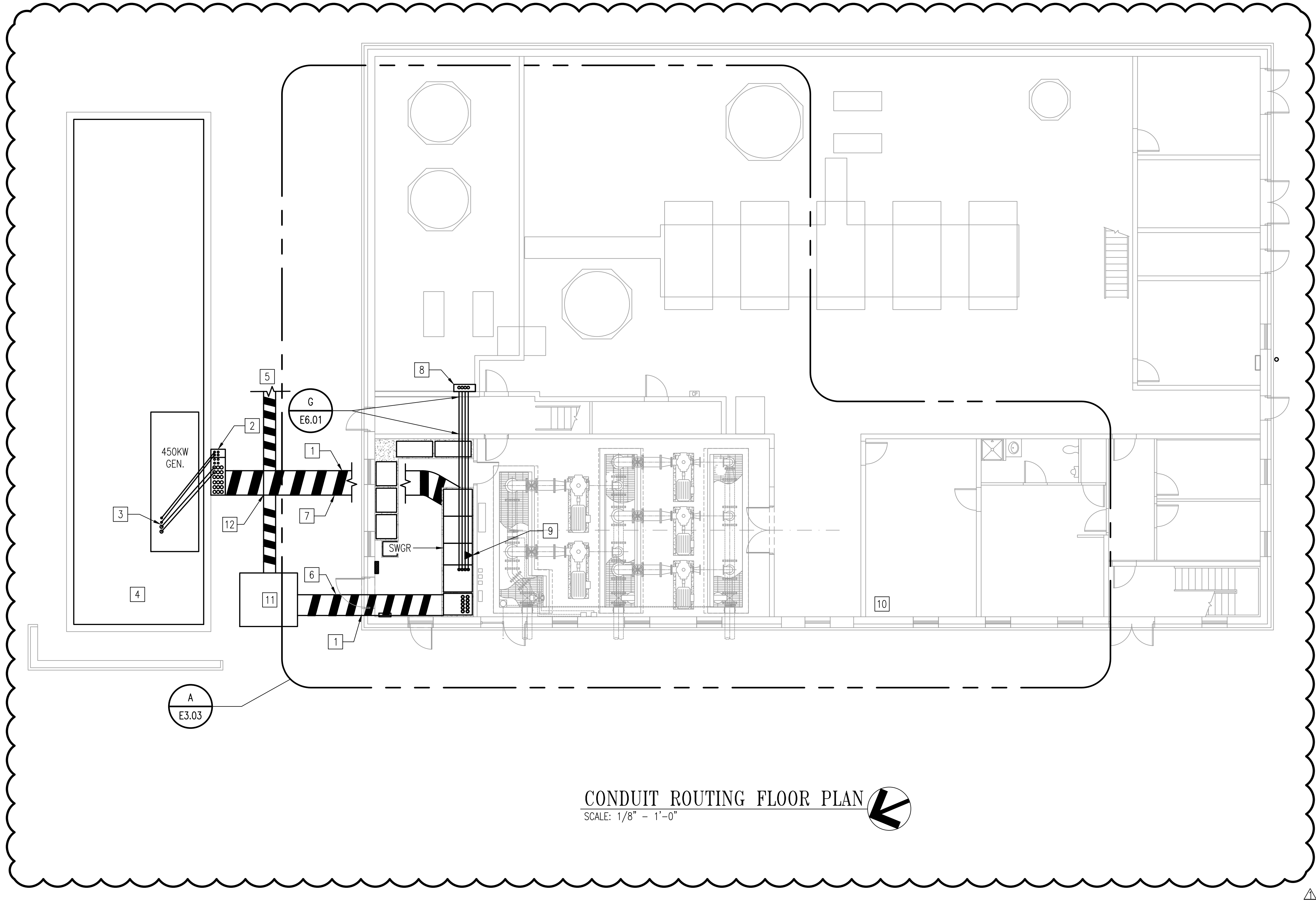
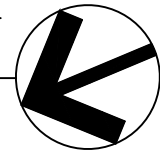


N:\4682-001\DWG\4682001E3-01.dwg Mar 09, 2020 - 257mm
PLOT DATE: 3/9/2020 8:57:01 PM PAGE SETUP: WRA-PDF C86X240 PLOT STYLE: WRA_PLOT.ctb PAPER SIZE: ARCH FULL BLEED D C86X240 X 2400 INCHES



CONDUIT ROUTING FLOOR PLAN

SCALE: 1/8" = 1'-0"



GENERAL SHEET NOTES

1. REFER TO DRAWINGS E0.01 FOR LEGEND AND ABBREVIATIONS AND E0.02 FOR DEFINITIONS AND GENERAL NOTES.
2. REFER TO DRAWING E5.01 FOR SINGLE LINE DIAGRAM.
3. REFER TO DRAWING E7.01 FOR FEEDER SCHEDULE AND DRAWING E7.02 FOR PANELBOARD SCHEDULES.
4. ALL INTERIOR ELECTRICAL EQUIPMENT SHALL BE IN NEMA 3R ENCLOSURE, UON.
5. ALL EXTERIOR ELECTRICAL EQUIPMENT SHALL BE IN NEMA 4X ENCLOSURE, UON.
6. COORDINATE FINAL LOCATIONS OF ELECTRICAL EQUIPMENT WITH OTHER TRADES.

SHEET KEYNOTES

- 1 ROUTE DUCTBANK BETWEEN BUILDING PILES.
- 2 FRONT ACCESS TWO SECTION POWER/CONTROL NEMA 4X STAINLESS STEEL HINGED ACCESS PULL BOX. MOUNT TO AN INDEPENDENT SUPPORT STRUCTURE WITH CUSTOM BASE TO ALLOW CONDUIT ENTRY. SEE DRAWING E6.02 DETAIL G FOR SECTION VIEW.
- 3 COORDINATE GENERATOR FEED STUB-UP IN EQUIPMENT PAD PRIOR TO CONCRETE POUR, COORDINATE EXACT DIMENSIONS WITH GENERATOR APPROVED SHOP DRAWINGS.
- 4 FUTURE 2000KW GENERATOR PAD.
- 5 REFER TO DRAWING E1.01 FOR CONTINUATION TO UTILITY POLE.
- 6 REFER TO DUCTBANK DETAIL C/E6.01.
- 7 REFER TO DUCTBANK DETAIL D/E6.01.
- 8 FEEDER TO MCC ON THE MEZZANINE LEVEL. MOUNT NEMA 3R PULL BOX 48"x48"x10" AND EXTEND RMC CONDUITS UP. SEE DRAWING E3.02 FOR CONDUIT CONTINUATION.
- 9 RJ-45 DATA DROP FOR NETWORK CONNECTION IN SWITCHGEAR FOR SWITCHGEAR PLC, TERMINATE AT EXISTING PATCH PANEL.
- 10 APPROXIMATE LOCATION OF COMMUNICATIONS NETWORK EQUIPMENT CLOSET/RACK.
- 11 APCO TRANSFORMER AND EQUIPMENT PAD. PROVIDE EQUIPMENT PAD SEE DRAWING E6.02 DETAIL "H".
- 12 PRIMARY DUCTBANK TO CROSS BELOW GENERATOR FEEDER DUCTBANK.

0 4' 8' 16'
SCALE: 1/8" = 1'-0"



WESTERN VIRGINIA WATER AUTHORITY
601 South Jefferson Street, Suite 300
Roanoke, Virginia 24011

| | | | |
|--------|---------|--------|--------------|
| DES: | KK | SCALE: | 1/8" = 1'-0" |
| DRAWN: | KK | HORIZ: | N/A |
| CHECK: | IHK | VERT: | N/A |
| DATE: | 1/24/20 | | |

CRYSTAL SPRING
PUMP STATION RELOCATION

ELECTRICAL POWER PLAN

DRAWING
E3.01

SHEET

59

| REV | DATE | DESCRIPTION |
|-----|---------|-------------|
| 1 | 3/10/20 | ADDENDUM #1 |