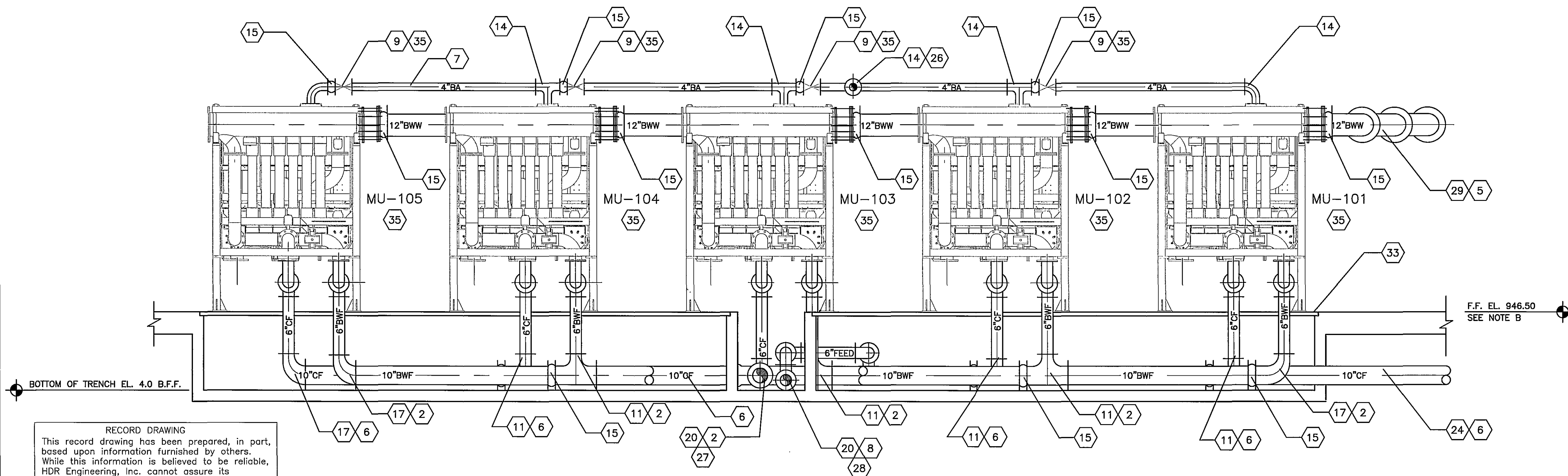


SECTION A  
SCALE: 3/8"=1'-0"



SECTION B  
SCALE: 3/8"=1'-0"

# GENERAL NOTES:

- A. ALL PIPE FITTINGS ARE SHOWN WITH LONG RADIUS
- B. F.F. ELEV. 946.50 IS TOP OF FLOOR ELEV AT WALL. ACTUAL FLOOR ELEV. WILL VARY WITH SLOPE TO DRAIN. ALL ELEV. A.F.F. AND B.F.F. SHALL BE BASED ON F.F. ELEV. 946.5.
- C. GRAY - SCALE EQUIPMENT PROVIDED BY US FILTER-MEMCOR, INSTALLED BY GENERAL CONTRACTOR
- D. SET ELEVATION OF MEMBRANE UNITS SUCH THAT THE BACKWASH PIPING AND FILTRATE EXHAUST PIPING ARE AT THE SAME ELEVATION OF THE T-101 CONNECTIONS.

## SPECIFIC NOTES:

- 1 FILTERED WATER
- 2 BACKWASH FEED
- 3 FILTERED EXHAUST
- 4 CIP WASTE
- 5 BACKWASH WASTE
- 6 CIP FEED
- 7 BACKWASH AIR
- 8 STRAINED WATER
- 9 CHECK VALVE
- 10 16"x8" REDUCING TEE
- 11 10"x6" REDUCING TEE
- 12 6"x4" REDUCING TEE
- 13 6"x6" TEE
- 14 4"x4" TEE
- 15 FLEXIBLE CONNECTION
- 16 16"x8" REDUCING ELBOW
- 17 10"x6" REDUCING ELBOW
- 18 BUTTERFLY VALVE
- 19 6"x4" REDUCING ELBOW
- 20 10"x8" REDUCING TEE
- 21 PROVIDE CIP DRAIN SLOPE AT 2.25%.
- 22 10" CW TO T-301 & T-302. SEE SHEET P-16 FOR CONTINUATION.
- 23 16" SW FROM STRAINER VAULT. SEE SHEET P-2 FOR CONTINUATION.
- 24 10" CF FROM CIP SYSTEM. SEE SHEET P-16 FOR CONTINUATION.
- 25 16" FW TO CHEMICAL INJECTION VAULT.
- 26 4" BA FROM PROCESS AIR. SEE SHEET P-17 FOR CONTINUATION.
- 27 8" BWF FROM T-201. SEE SHEET P-15 FOR CONTINUATION.
- 28 6" SW TO T-201. SEE SHEET P-15 FOR CONTINUATION.
- 29 12" BW WASTE TO T-101. SEE SHEET P-10 FOR CONTINUATION.
- 30 6" FE TO T-101. SEE SHEET P-10 FOR CONTINUATION.
- 31 NOT USED
- 32 BLIND FLANGE
- 33 ALUMINUM GRATING
- 34 4"x4" ELBOW
- 35 PROVIDED BY US FILTER-MEMCOR, INSTALLED BY GENERAL CONTRACTOR.

RECORD DRAWING  
This record drawing has been prepared, in part, based upon information furnished by others. While this information is believed to be reliable, HDR Engineering, Inc. cannot assure its accuracy, and thus is not responsible for the accuracy of this record drawing or for any errors or omissions which may have been incorporated into it as a result. Those relying on this record document are advised to obtain independent verification of its accuracy before applying it for any purpose.

**RECORD DRAWING**  
**APRIL 28, 2003**

**Wiley & Wilson**  
ARCHITECTS ENGINEERS PLANNERS  
An Employee-Owned Company  
2310 LANGHORNE ROAD  
LYNCHBURG, VIRGINIA 24501  
(804) 947-1901  
P.O. BOX 877  
LYNCHBURG, VIRGINIA 24505-0877

IN ASSOCIATION WITH  
**HDR**  
HDR Engineering, Inc.

DESIGNED ADE	DRAWN JMB	PROJECT CRYSTAL SPRING WATER TREATMENT PLANT FOR THE CITY OF ROANOKE, VIRGINIA
CHECKED PJD		REFERENCE PROCESS
COMM. NO.		TITLE MICROFILTRATION UNIT SECTIONS
CADD NO.		DWG. NO. P-13
DATE AUGUST 27, 2001		SHEET NO. REV.

1	9/13/2001			REVISED AS PER ADDENDUM DATED (9/13/2001)
0	8/27/2001			ISSUED FOR CONSTRUCTION
REV.	DATE	BY	APP.	DESCRIPTION