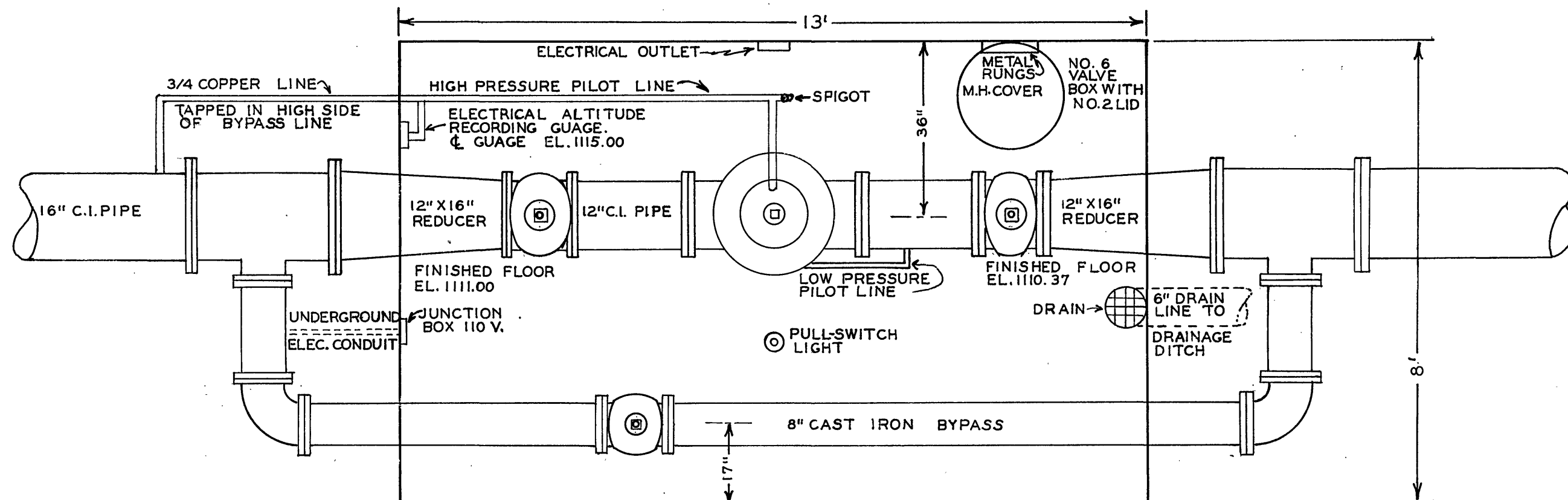


NOTE:- ALL OPERATING NUTS ARE TO HAVE
NO. 5 VALVE BOXES WITH NO. 1 LIDS
DIRECTLY ABOVE TO PROVIDE ACCESS
TO NUTS.
CEILING OF VAULT SHOULD BE AT
LEAST 6' ABOVE THE FLOOR.



INSIDE DIMENSIONS & FLOOR PLAN
FOR REINFORCED CONCRETE GAUGE
& VALVE PIT
SCALE $\frac{1}{2}" = 1'$

DRAWN BY E.L.A. DECEMBER, 6, 1967 F3-D5-SI

Julius C. Cude