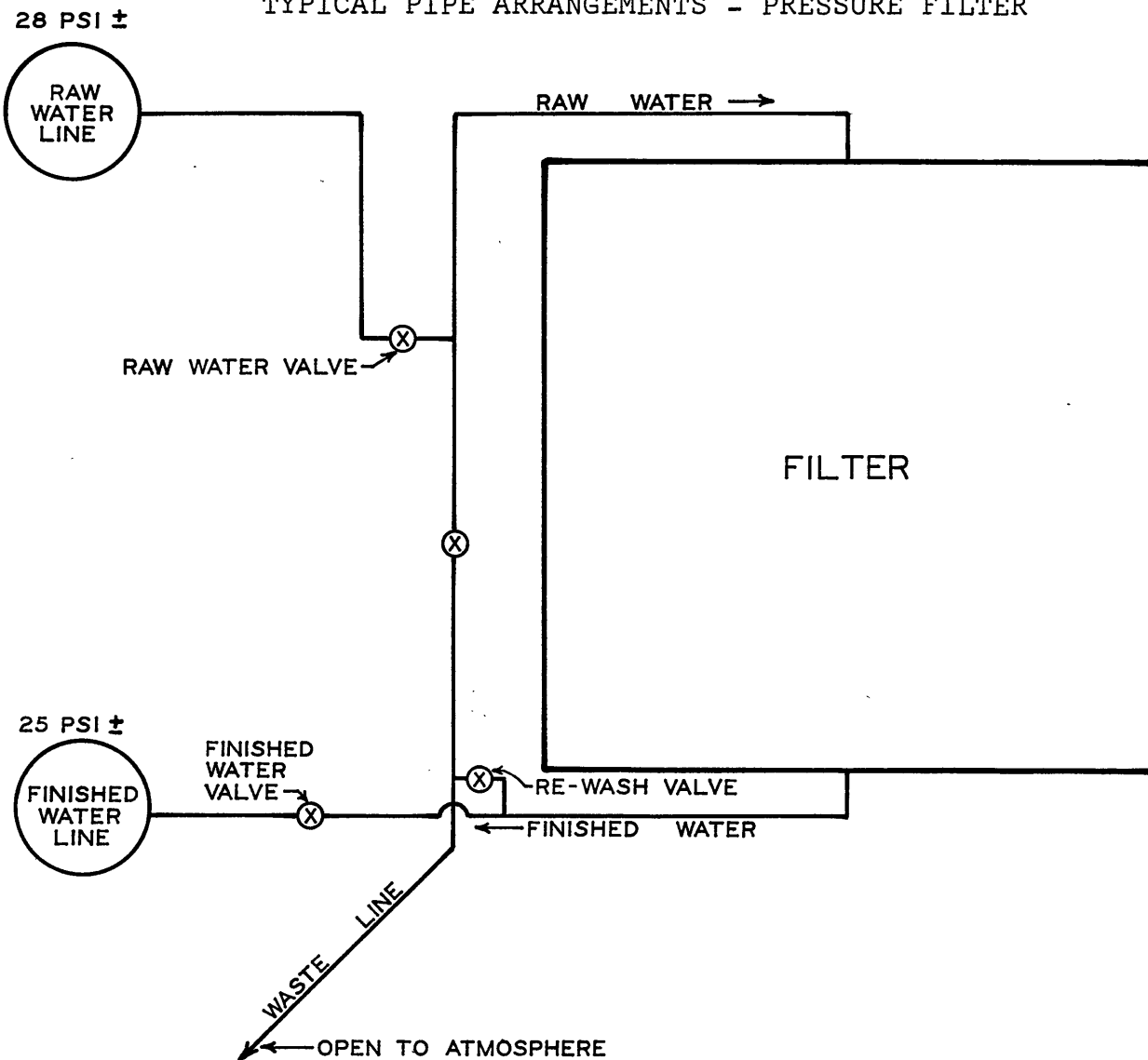


FALLING CREEK FILTER PLANT

TYPICAL PIPE ARRANGEMENTS - PRESSURE FILTER



SCHEMATIC

Note: Due to the waste line being open to atmosphere with zero pressure and 25 psi pressure on the finished water line, it is impossible to have a cross connection between the finish water and raw water with this piping arrangement.