

## What are the Steps in Preparing a Wellhead Protection Plan?

1. Form a Local Advisory Committee.
2. Identify the wellhead recharge and well head protection areas.
3. Identify possible sources of pollution in the wellhead protection area and determine how vulnerable the wellhead protection area is to pollution.
4. Implement ways to prevent groundwater pollution.
5. Public Education Program

## Why Do You Need a Team?

- The team can build community involvement. Getting the community to buy into wellhead protection through participation is crucial if your protection plan is to succeed.
- Having a few extra people makes the job go faster and smoother. The most frequently overlooked resources of a community are the energy, knowledge, and enthusiasm of its citizens.
- An active wellhead protection team that can identify possible contaminant sources and develop management strategies can save the system and the consumer money.

## Source Water Protection is a Community Effort

### To help prepare a plan:

- *Serve on work groups*
- *Attend wellhead protection meetings*
- *Help identify possible sources of contamination on your property*

### To protect local groundwater:

- *Recognize and manage possible sources of contamination on your property*
- *Use hazardous products as directed and dispose of them properly*
- *Conserve water*
- *Be involved in teaching, telling, and educating others about participation in the Program.*
- *Support the adoption and implementation of the Source Water Protection Plan.*



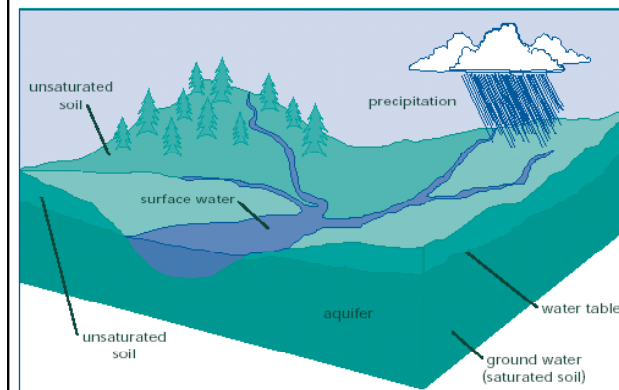
Olver Incorporated has been contracted by the Virginia Department of Health to provide management and technical assistance to small communities to help them develop and implement Source Water Protection Plans.

### For assistance in developing a Source Water Protection Plan contact:

**Olver - A CHA Company**  
**1-540-552-5548**  
**swarner@chacompanies.com**  
**<http://www.vdh.virginia.gov/drinkingwater/source/>**



## Is Your Drinking Water Safe?



### The Virginia Department of Health, Office of Drinking Water

*in cooperation with*

**Olver-A CHA Company**

*is providing assistance in developing*

### Source Water Protections Plans

for

**Public Ground Water Supplies**

**Serving Populations < 3,300**



## What is Source Water Protection?

Source water protection is a method of preventing contamination of a public water supply well by effectively managing potential contaminant sources in the area which contributes water to the well.

Source water protection helps safeguard community water supplies; it is community-based by definition. In fact, it is one of the oldest community-based environmental initiatives recorded in American history, predating the establishment of our nation:

### *Proclamation for Jamestown, Virginia*

*"There shall be no man or woman dare to wash any unclean linen, wash clothes,..... nor rinse or make clean any kettle, pot or pan, or any suchlike vessel within twenty feet of the old well or new pump. Nor shall anyone aforesaid within less than a quarter mile of the fort, dare to do the necessities of nature, since these unmanly, slothful, and loathsome immodesties, the whole fort may be choked and poisoned."*

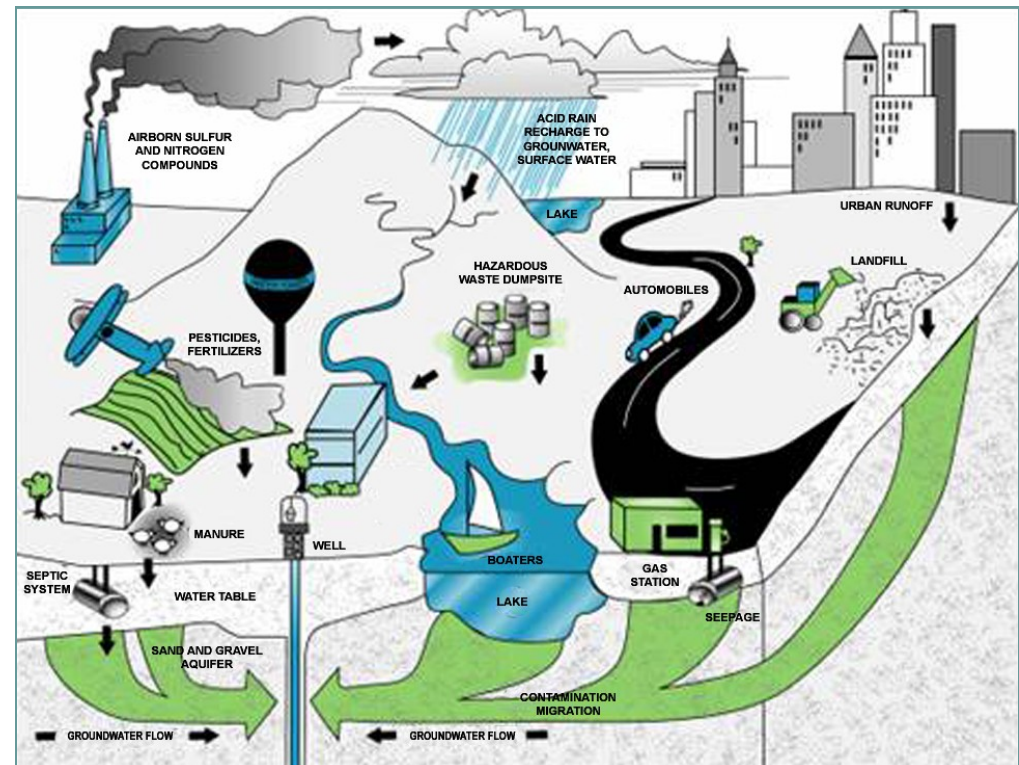
*(Governor Gage of Virginia, 1610)*

## Why Should Source Protection Matter to You?

- The quality of drinking water affects public health
- The quality of drinking water affects the economic well-being of our communities
- Once water is contaminated:
  - Clean-up is costly and may not be feasible
  - Required treatment adds to management and operating costs
- Developing new sources is expensive

## Threats to Our Drinking Water

Contaminants introduced at the land surface may infiltrate to the water table and flow toward points of discharge such as drinking water wells and streams. Common threats to drinking water sources are pollutants transported by runoff, leaking underground storage tanks, septic systems, animal feeding operations, and overuse of fertilizers and pesticides.



Examples of Threats to Source Water