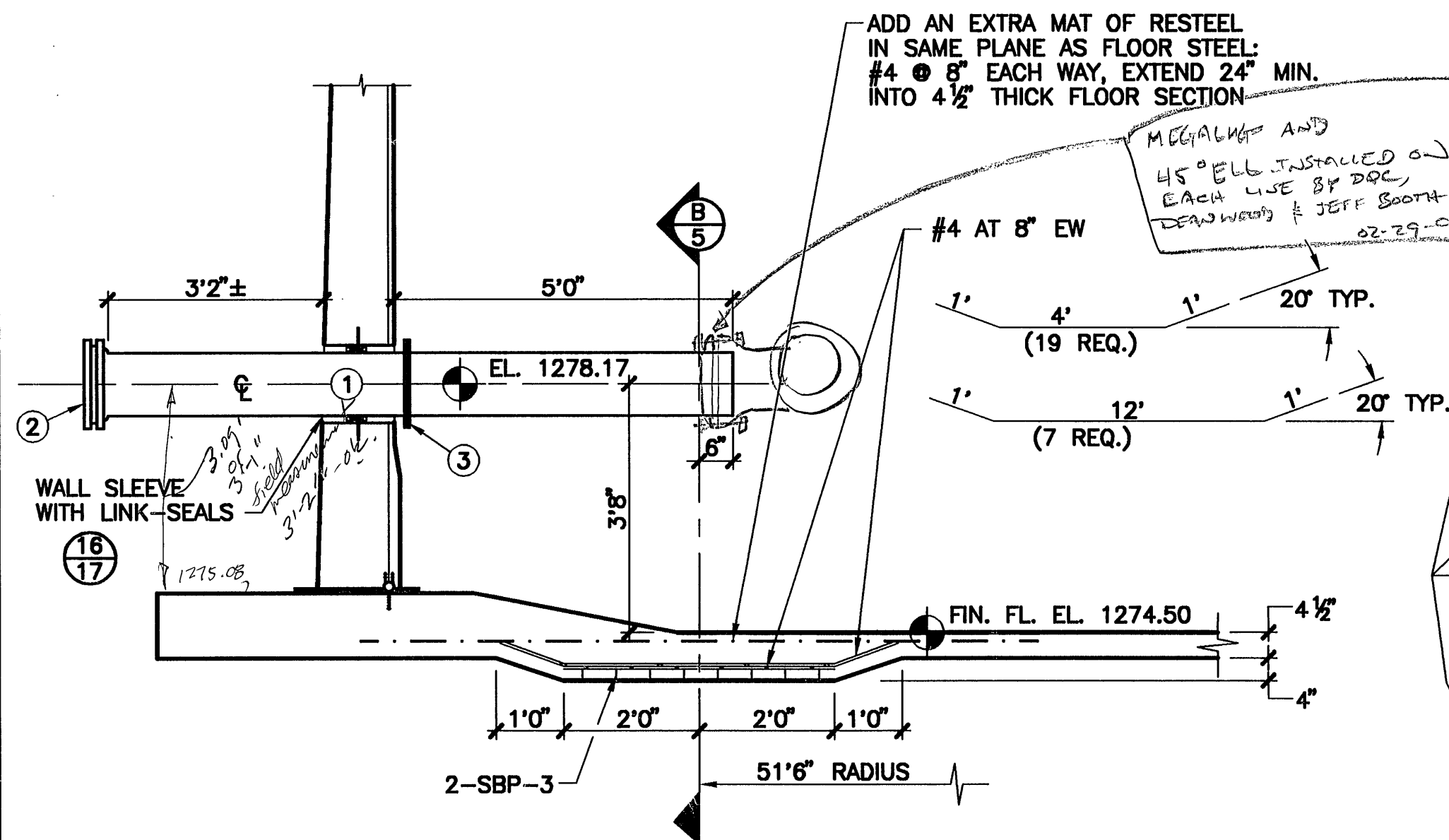


***EXPOSED METAL SURFACES OF PIPE INSIDE TANK TO BE COATED WITH AN EPOXY APPROVED BY NSF FOR CONTACT WITH POTABLE WATER**

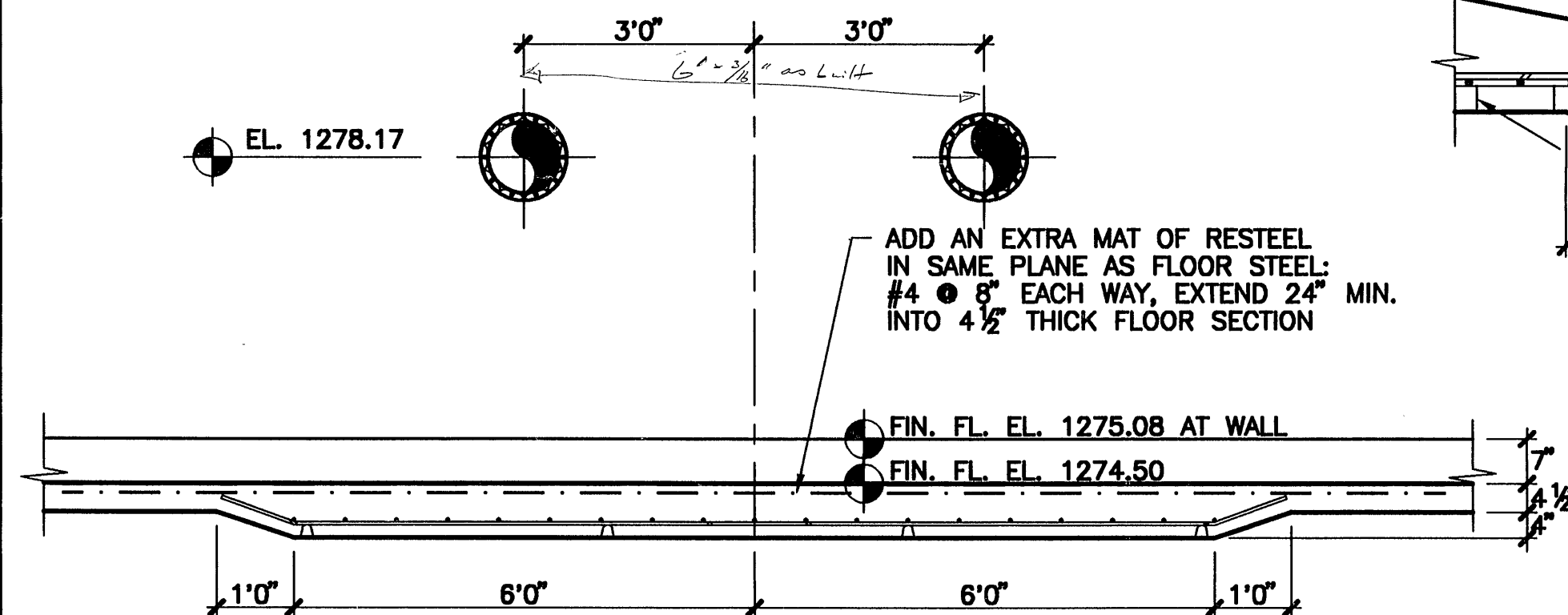
PIPE SCHEDULE FOR 10" DIP
SURGE RELIEF VALVE LINE (2 REQ.)

- *① 10" DIP x 9'6" LONG OVERALL (9'3 1/2" LAYING LENGTH), MJ-PE
- ② 10" DIP CLASS 350 MJ PLUG
- ③ MEGALUG



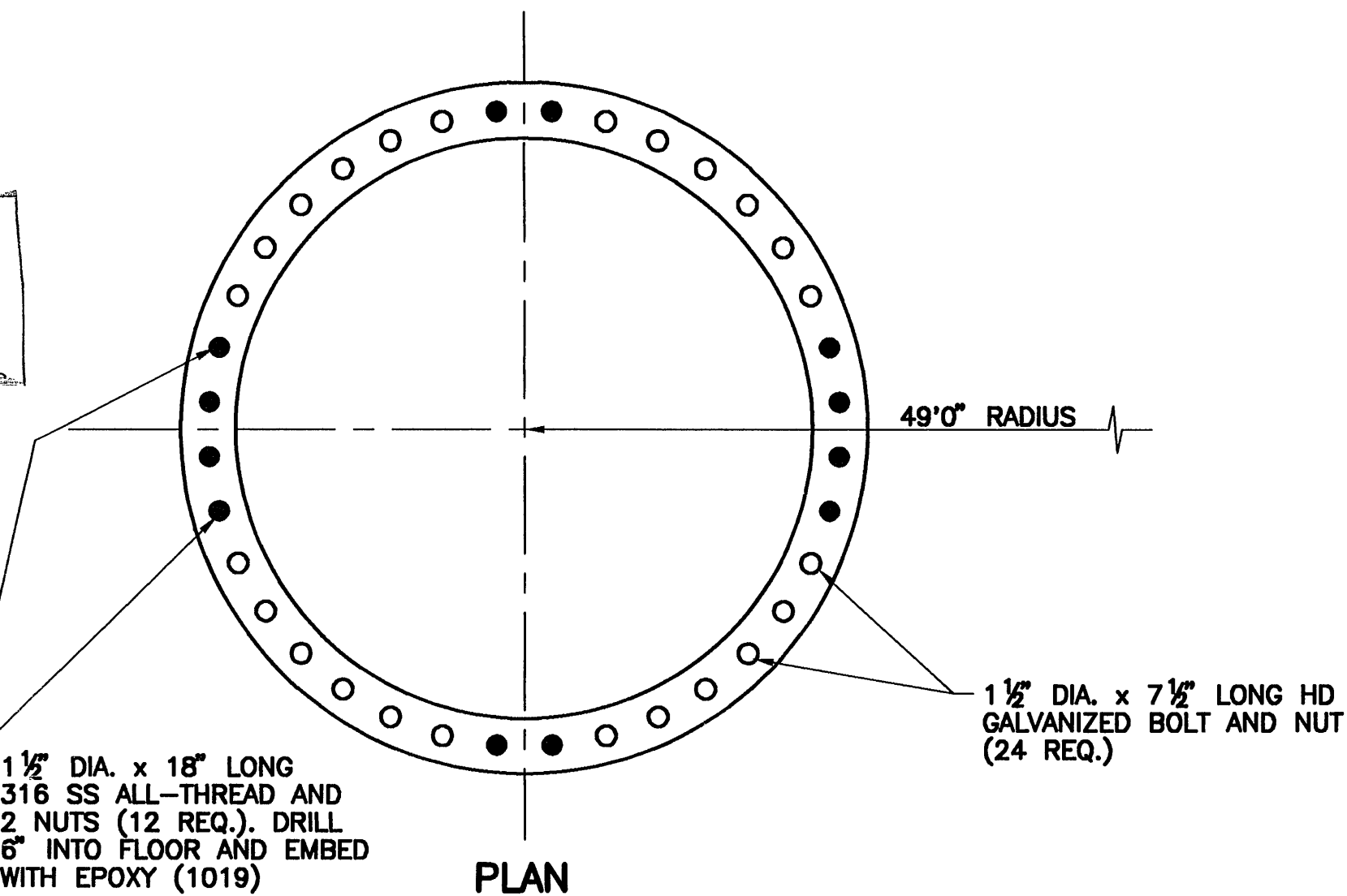
④ 10" DIP SURGE RELIEF VALVE LINE (2 REQ.)

1' 0 1' 2'
SCALE 1/2"=1'0"

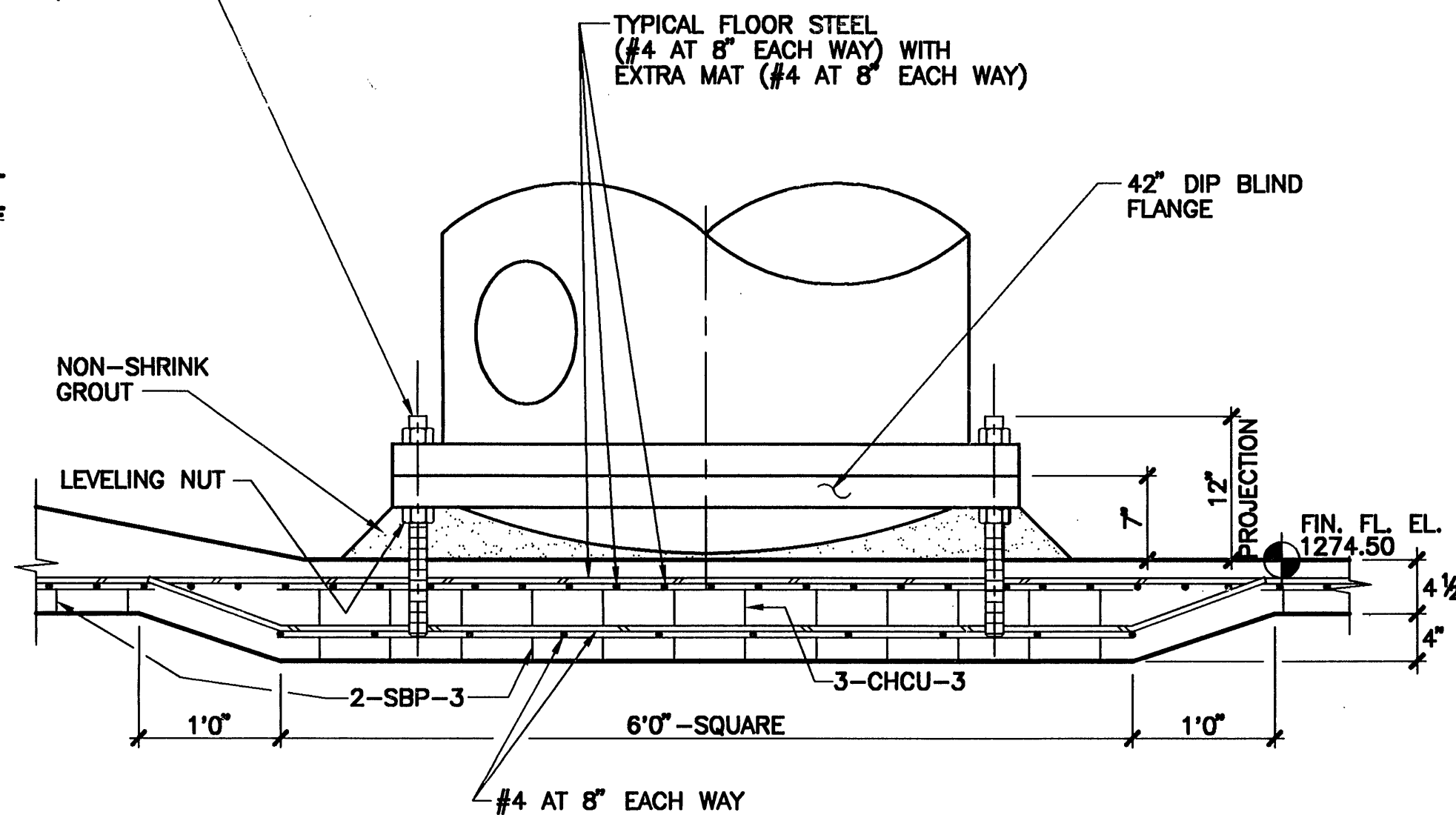


SECTION

1' 0 1' 2'
SCALE 1/2"=1'0"



PLAN



ELEVATION

⑤ ANCHOR BOLTS FOR 42" DIP INLET

1' 0 1'
SCALE 1"=1'0"



DATE: 03-21-95

DRAWN: PTH

CHECKED: [Signature]

APPROVED: [Signature]

DESIGNED: JSW

TANK DESCRIPTION:

2.0-MG CLEAR WELL

TANK DIMENSIONS:

112'0" ID x 28'0" SWD

TANK BUILDER:

THE CROM CORPORATION
GAINESVILLE, FLORIDA

OWNER:

COUNTY OF
ROANOKE
VIRGINIA

CONSULTING ENGINEER:

ROANOKE COUNTY
UTILITY DEPARTMENT

REV.	DESCRIPTION	DATE CHK. BY

WHERE STANDARD SPECIFICATIONS ARE IN CONFLICT WITH CROM CORPORATION SPECIFICATIONS OR WITH GOOD PRE-STRESSING OR SHOTCRETE PRACTICES THE STANDARD SPECIFICATIONS SHALL BE SUBORDINATED. THIS DESIGN AND DRAWING ORIGINATED BY AND THE EXCLUSIVE PROPERTY OF THE CROM CORPORATION.

BAR IS ONE INCH ON ORIGINAL
DRAWINGS 0 1"

SCALE:

AS NOTED

FILE NO. **9449.2**

SHEET **5** OF **19**