

DATE: 03-21-95

DRAWN: *DPH*

CHECKED: *JSV*

APPROVED: *JSV*

DESIGNED: *JSV*

TANK DESCRIPTION:

2.0-MG CLEAR WELL

TANK DIMENSIONS:

112'0" ID x 28'0" SWD

TANK BUILDER:

THE CROM CORPORATION
GAINESVILLE, FLORIDA

OWNER:

COUNTY OF
ROANOKE
VIRGINIA

CONSULTING ENGINEER:

ROANOKE COUNTY
UTILITY DEPARTMENT

REV.	DESCRIPTION	DATE CHK. BY
------	-------------	-----------------

WHERE STANDARD SPECIFICATIONS ARE IN CONFLICT WITH CROM CORPORATION SPECIFICATIONS OR WITH GOOD PRE-STRESSING OR SHOTCRETE PRACTICES THE STANDARD SPECIFICATIONS SHALL BE SUBORDINATED. THIS DESIGN AND DRAWING ORIGINATED BY AND THE EXCLUSIVE PROPERTY OF THE CROM CORPORATION.

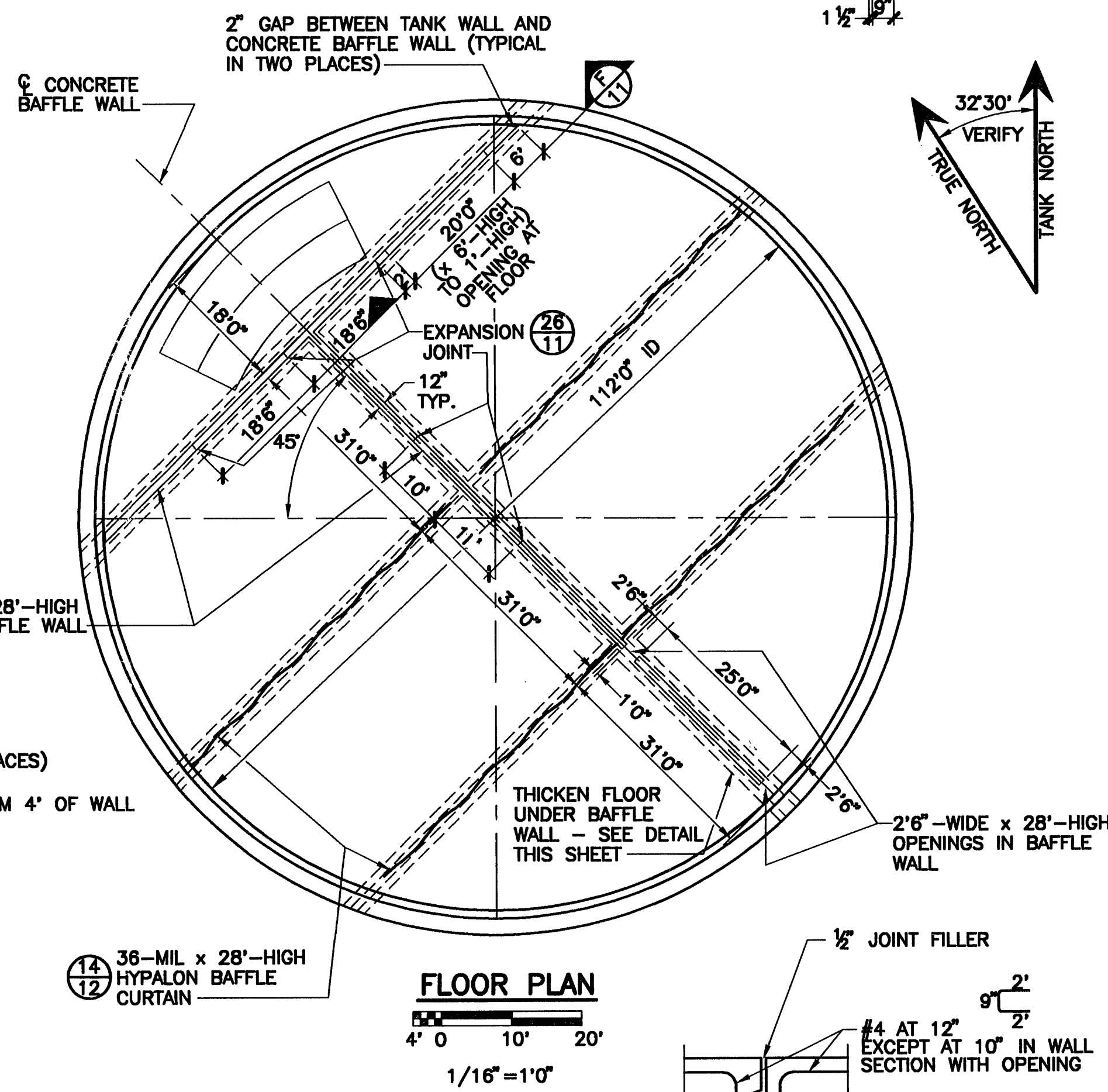
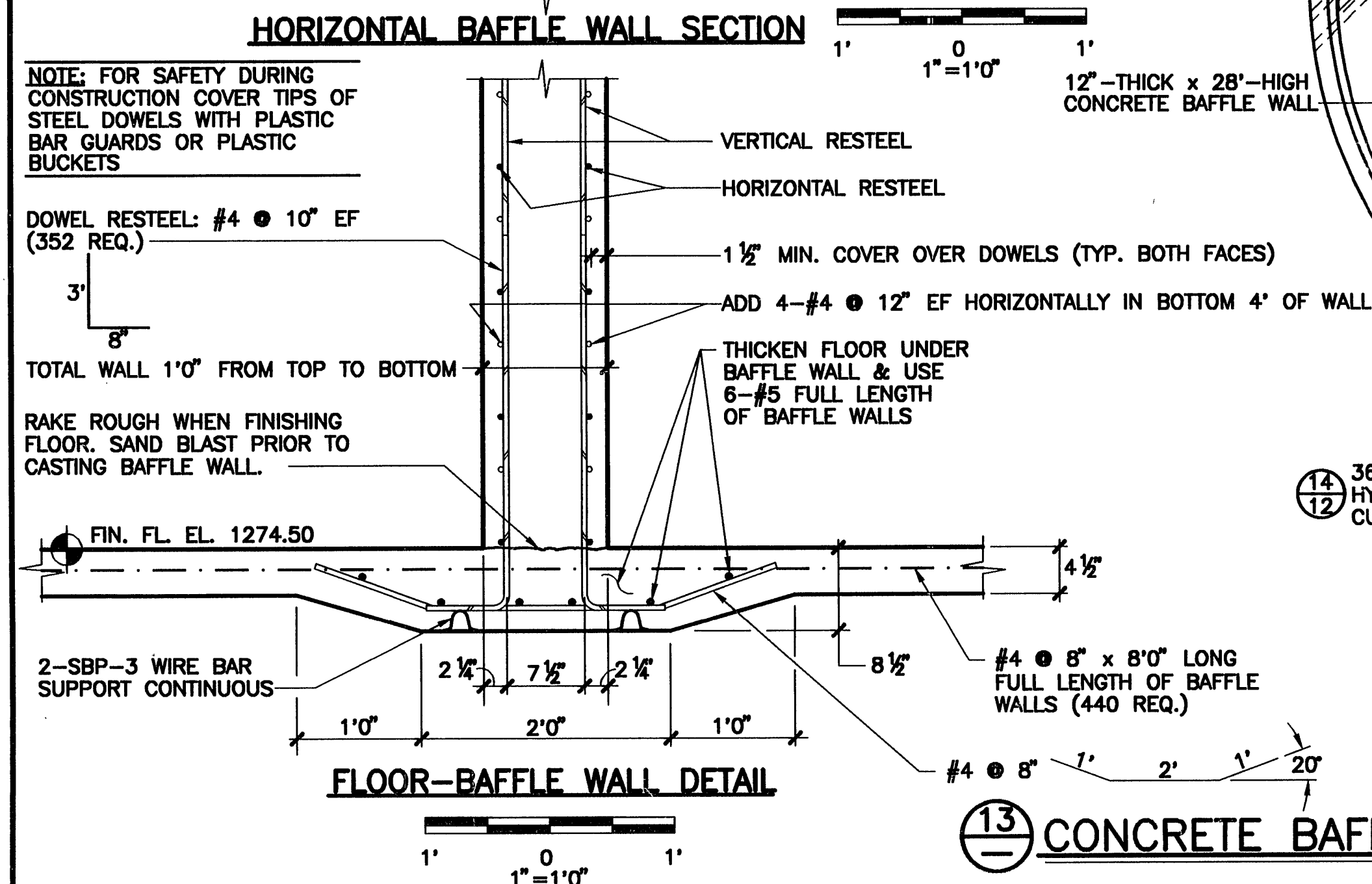
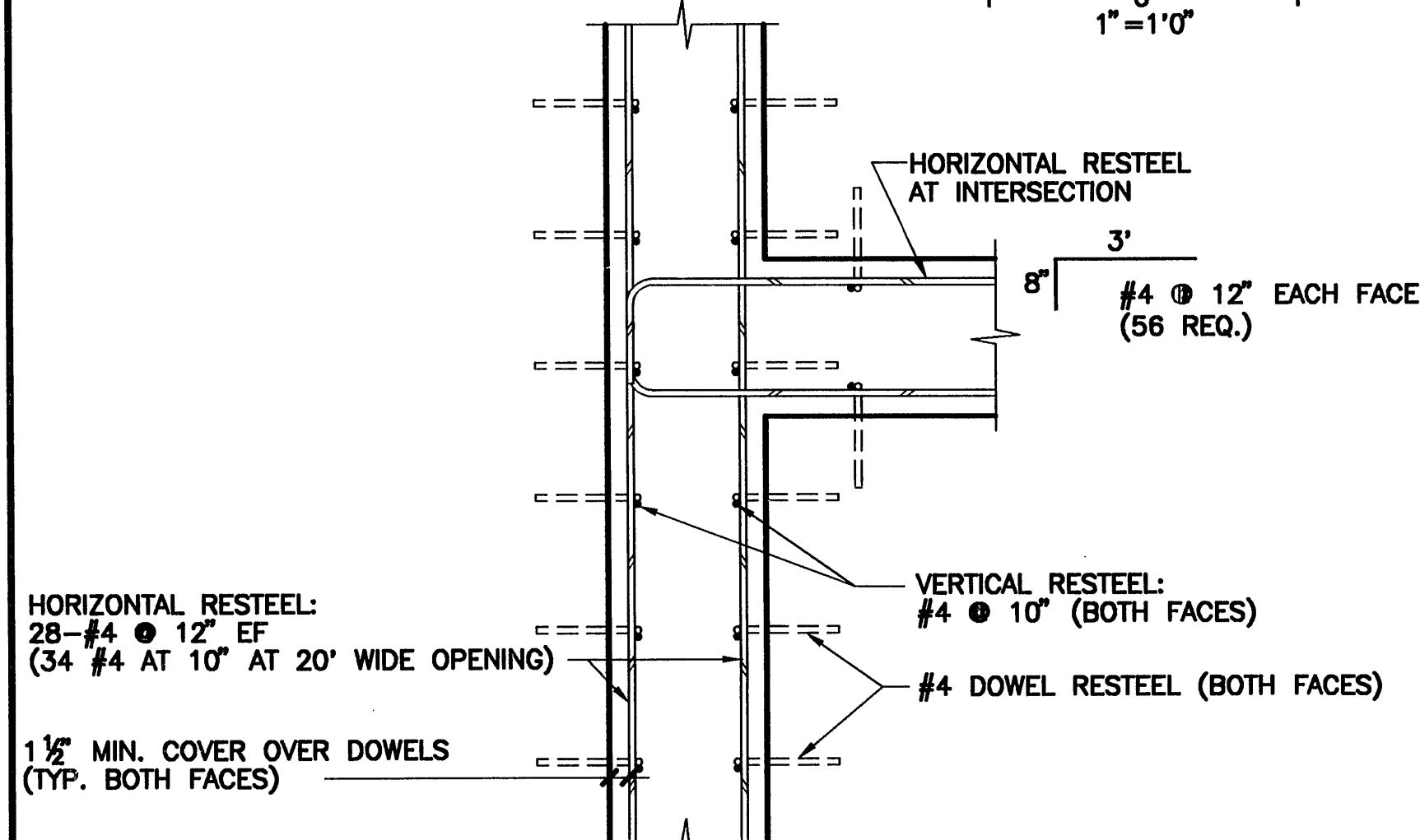
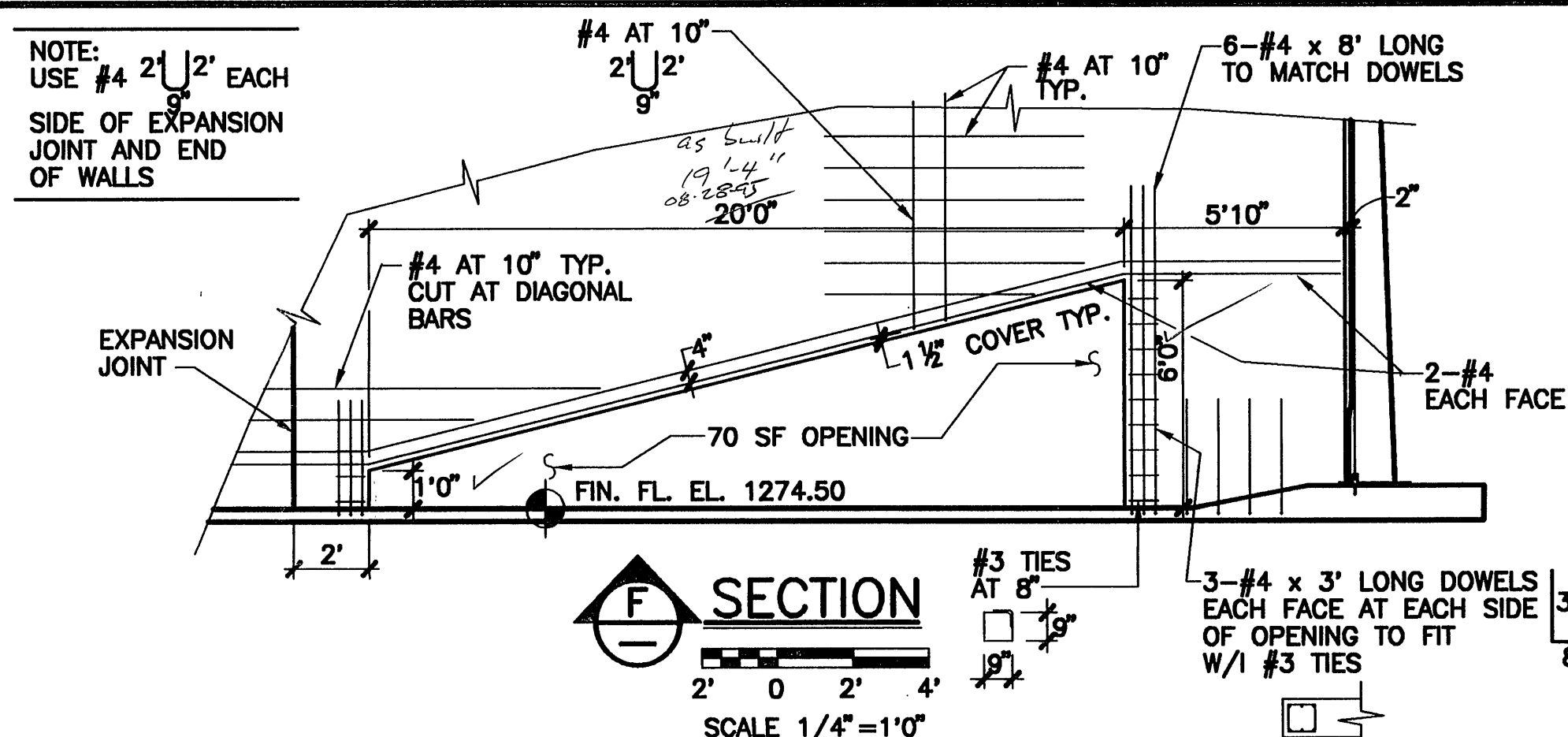
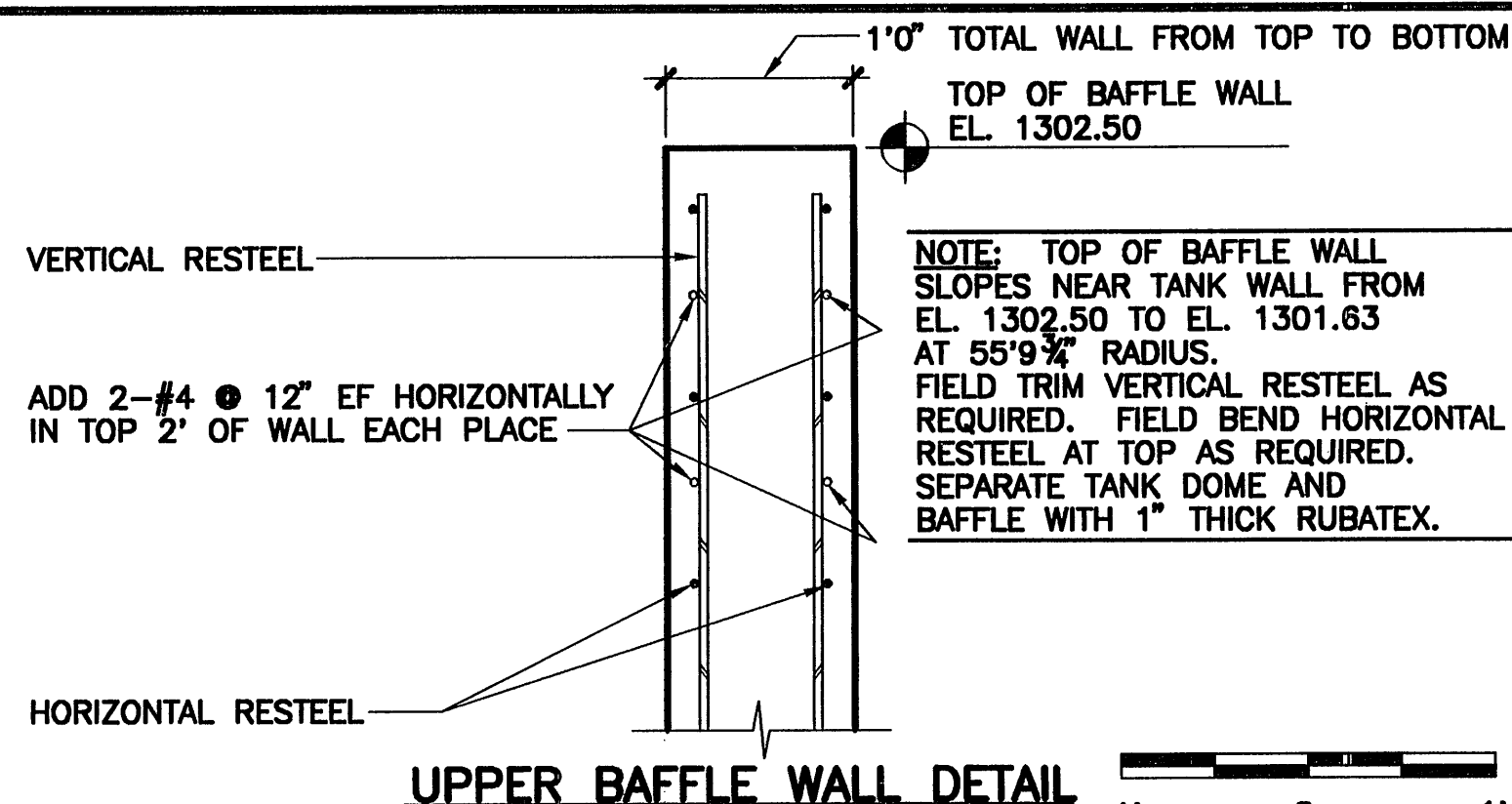
BAR IS ONE INCH ON ORIGINAL DRAWINGS 0 1"

SCALE:

AS NOTED

FILE NO. **9449.2**

SHEET **11** OF **19**



13 CONCRETE BAFFLE WALL

26 TYPICAL EXPANSION JOINT

COPYRIGHT © 1995 BY THE CROM CORPORATION-ALL RIGHTS RESERVED