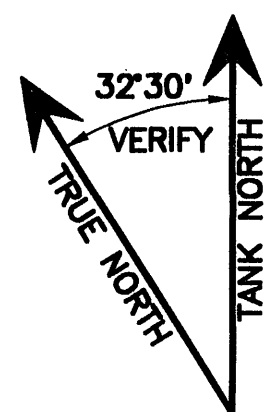


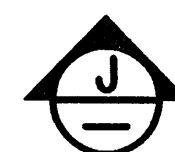
14 BAFFLE CURTAIN PLAN

4' 0' 10' 20'

SCALE 1/16"=1'0"



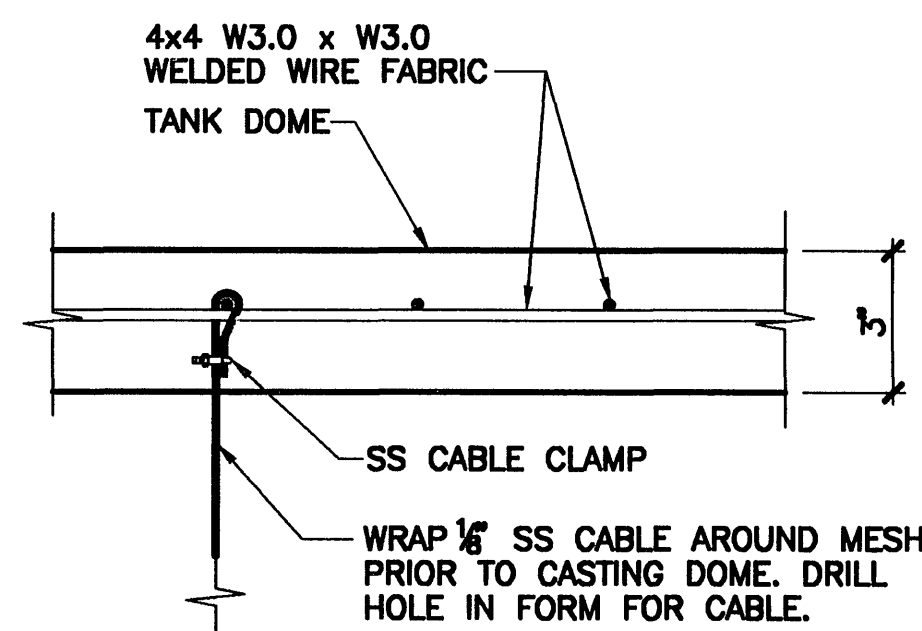
- 3/8" x 2 3/4" SS EXPANSION WEDGE AT 12" OC (EMBED IN EPOXY)
- 3/8" DIA. NUT, BOLT AND WASHER
- 1/4" x 2" STAINLESS STEEL BATTENS WITH 1/8" DIA. HOLES AT 12" OC
- BAFFLE CURTAIN
- 3/8" x 2" x 2" STAINLESS STEEL ANGLE WITH 1/8" DIA. HOLES AT 12" OC
- SHOTCRETE BOSS



BAFFLE CURTAIN WALL ANCHOR SECTION

0 1'

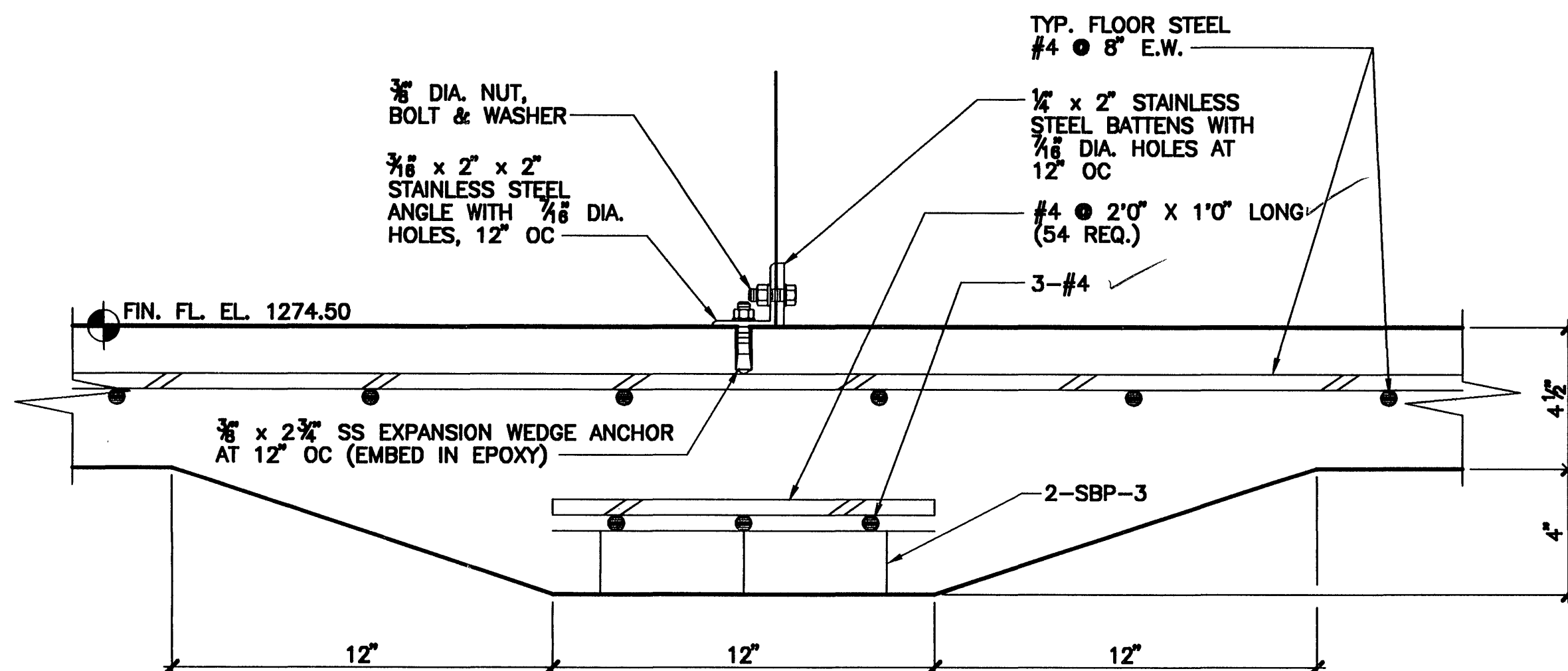
SCALE 3"=1'0"



N BAFFLE CURTAIN DOME ANCHOR SECTION

0 1'

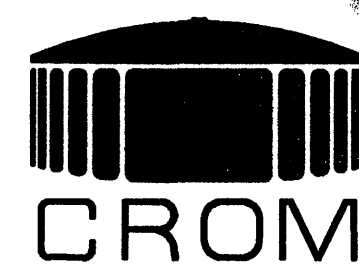
SCALE 3"=1'0"



G BAFFLE CURTAIN FLOOR ANCHOR SECTION

0 1'

SCALE 3"=1'0"



DATE: 03-21-95

DRAWN: P.J.H.

CHECKED: J.S.W.

APPROVED: J.S.W.

DESIGNED: J.S.W.

TANK DESCRIPTION:

2.0-MG CLEAR WELL

TANK DIMENSIONS:

112'0" ID x 28'0" SWD

TANK BUILDER:

THE CROM CORPORATION
GAINESVILLE, FLORIDA

OWNER:

COUNTY OF
ROANOKE
VIRGINIA

CONSULTING ENGINEER:

ROANOKE COUNTY
UTILITY DEPARTMENT

| REV. | DESCRIPTION | DATE | CK. BY |
|------|-------------|------|--------|
| | | | |

WHERE STANDARD SPECIFICATIONS ARE IN CONFLICT WITH CROM CORPORATION SPECIFICATIONS OR WITH GOOD PRE-STRESSING OR SHOTCRETE PRACTICES THE STANDARD SPECIFICATIONS SHALL BE SUBORDINATED. THIS DESIGN AND DRAWING ORIGINATED BY AND THE EXCLUSIVE PROPERTY OF THE CROM CORPORATION.

BAR IS ONE INCH ON ORIGINAL DRAWINGS 0 1"

SCALE:

AS NOTED

FILE NO. 9449.2

SHEET 12 OF 19