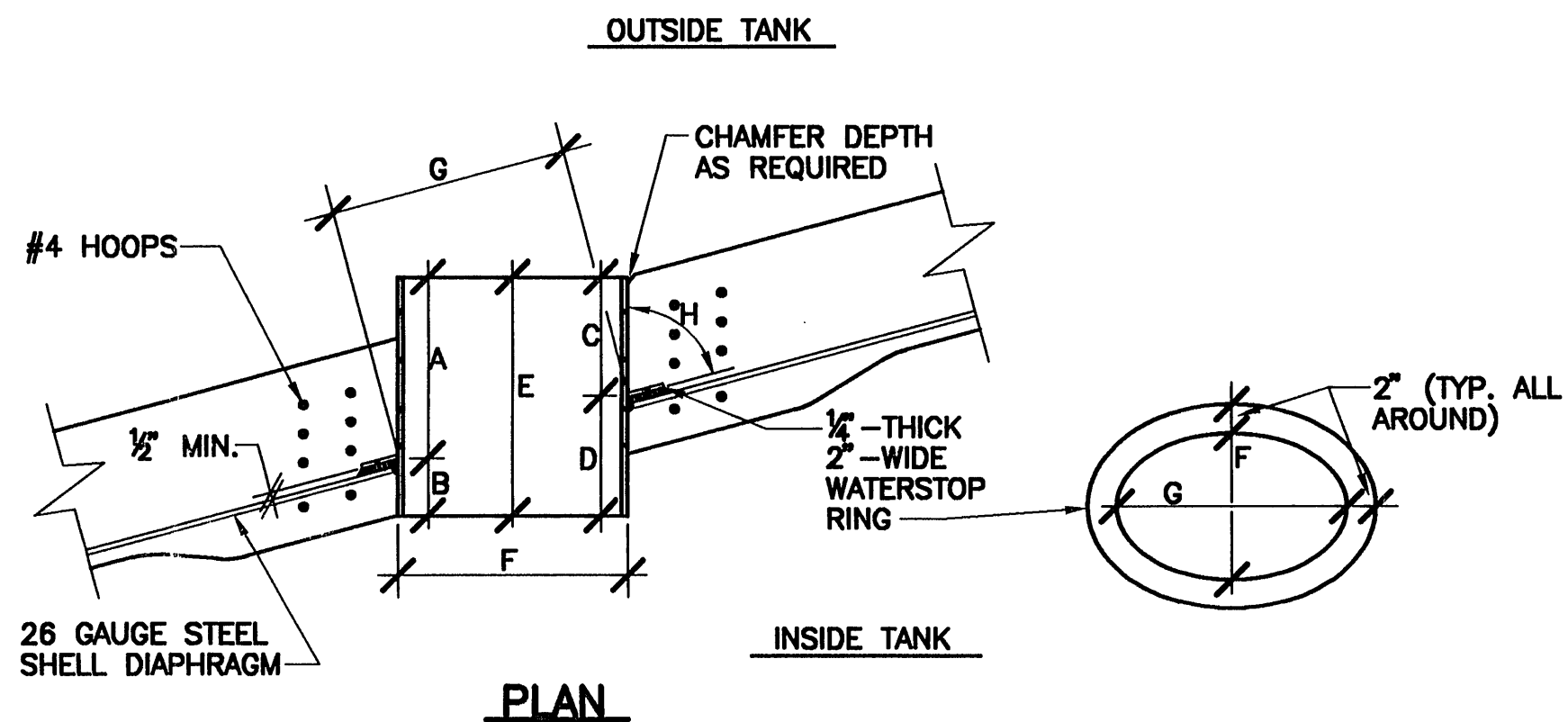
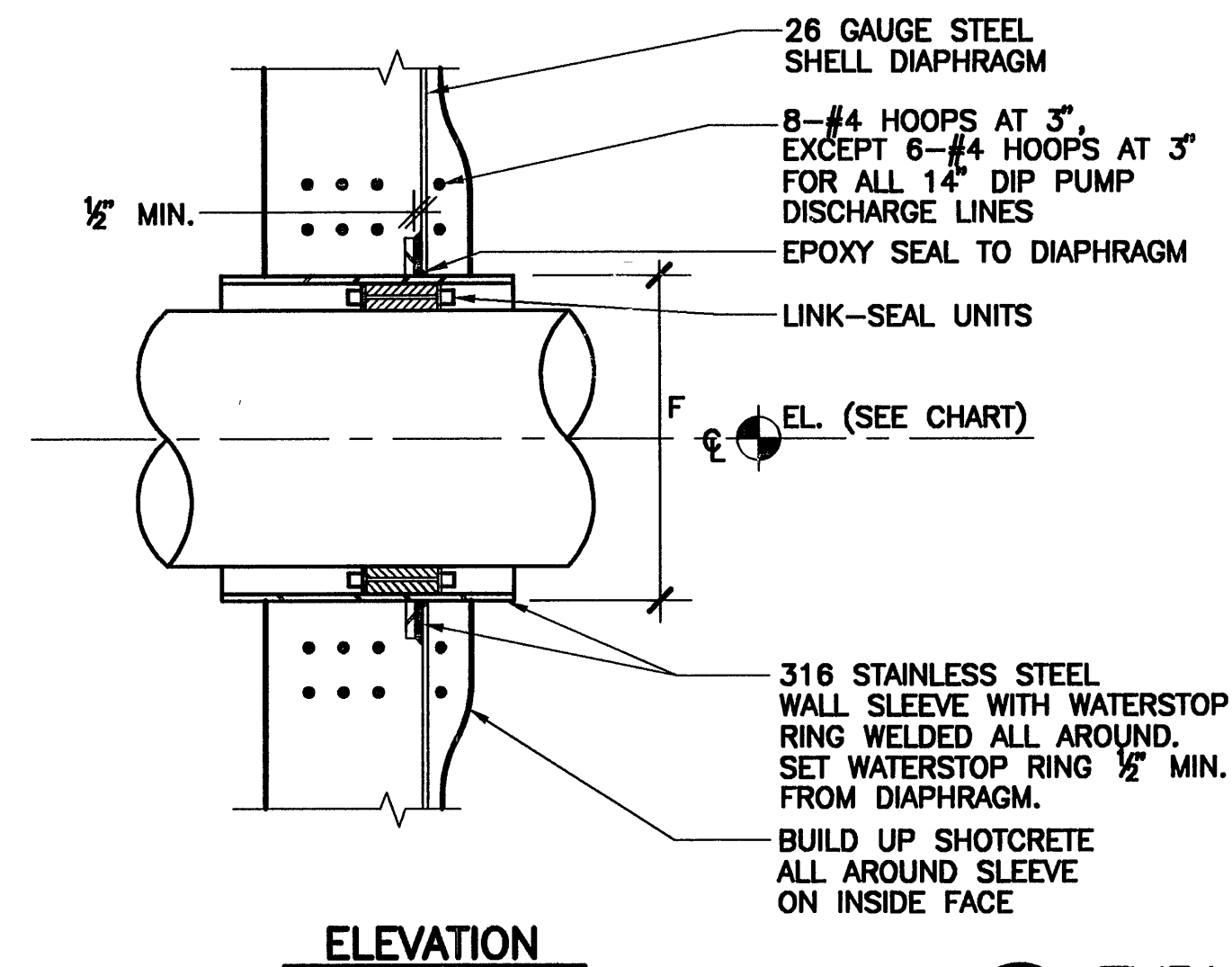


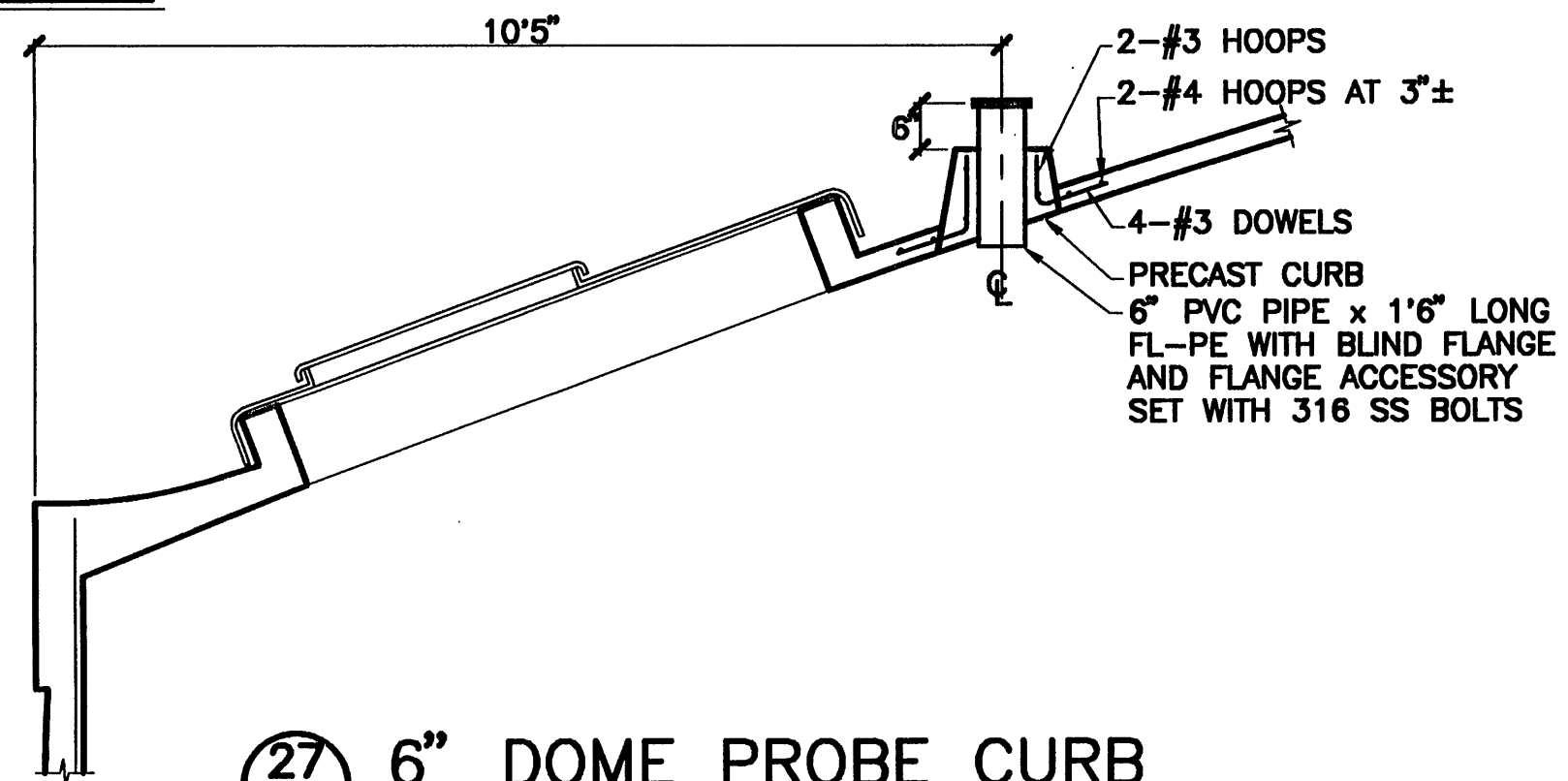
C:\TPC\ROANOKE - Tue Mar 21 17:08:25 1995

PIPE DESCRIPTION	PIPE OD	℄ EL.	LINK-SEAL/#	SLEEVE										
				ID	WALL	A	B	C	D	E	F	G	H	NO. REQ.
42" DIP INLET	44.50"	1286.67	LS-525-S/38	49.25"	0.375"	8"	4"	8"	4"	12"	50"	50"	90"	1
14" DIP PUMP DISCHARGE LINE No. 1	15.30"	1291.50	LS-325-S/16	17.25"	0.375"	11 ¾"	4 ¼"	7"	9"	16"	18"	18 ¾"	75"	1
14" DIP PUMP DISCHARGE LINE No. 2	15.30"	1291.50	LS-325-S/16	17.25"	0.375"	9 ½"	4"	6 ½"	7"	13 ½"	18"	18 ¼"	81"	1
14" DIP PUMP DISCHARGE LINE No. 3	15.30"	1291.50	LS-325-S/16	17.25"	0.375"	7 ½"	4"	6 ½"	5"	11 ½"	18"	18"	87"	1
14" DIP PUMP DISCHARGE LINE No. 4	15.30"	1291.50	LS-325-S/16	17.25"	0.375"	7 ½"	4"	6 ½"	5"	11 ½"	18"	18"	87"	1
14" DIP PUMP DISCHARGE LINE No. 5	15.30"	1291.50	LS-325-S/16	17.25"	0.375"	9 ½"	4"	6 ½"	7"	13 ½"	18"	18 ¼"	81"	1
14" DIP PUMP DISCHARGE LINE No. 6	15.30"	1291.50	LS-325-S/16	17.25"	0.375"	11 ¾"	4 ¼"	7"	9"	16"	18"	18 ¾"	75"	1
10" DIP SURGE RELIEF VALVE LINE	11.10"	1278.17	LS-325-S/12	13.25"	0.375"	11 ¾"	4"	10 ¾"	5"	15 ¾"	14"	14"	87"	2

*REFER TO 10
8

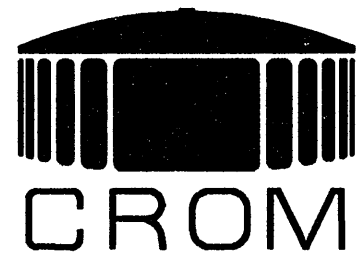


16 TYPICAL WALL SLEEVE DETAIL



27 6" DOME PROBE CURB

1' 0 1' 2'
SCALE 1/2"=1'0"



DATE: 03-21-95

DRAWN: *DPH*

CHECKED: *JSW*

APPROVED: *JSW*

DESIGNED: *JSW*

TANK DESCRIPTION:

2.0-MG CLEAR WELL

TANK DIMENSIONS:

112'0" ID x 28'0" SWD

TANK BUILDER:

THE CROM CORPORATION
GAINESVILLE, FLORIDA

OWNER:

COUNTY OF
ROANOKE
VIRGINIA

CONSULTING ENGINEER:

ROANOKE COUNTY
UTILITY DEPARTMENT

REV.	DESCRIPTION	DATE CK. BY
------	-------------	----------------

WHERE STANDARD SPECIFICATIONS ARE IN CONFLICT WITH CROM CORPORATION SPECIFICATIONS OR WITH GOOD PRE-STRESSING OR SHOTCRETE PRACTICES THE STANDARD SPECIFICATIONS SHALL BE SUBORDINATED. THIS DESIGN AND DRAWING ORIGINATED BY AND THE EXCLUSIVE PROPERTY OF THE CROM CORPORATION.

BAR IS ONE INCH ON ORIGINAL
DRAWINGS 0 1"

SCALE:

AS NOTED

FILE NO. **9449.2**

SHEET **17** OF **19**