

## PULSAtron® Series E Plus

### Specifications and Model Selection

MODEL	LPK2	LPB2	LPA2	LPD3	LPB3	LPA3	LPK3	LPF4	LPB4	LPH4	LPK4	LPB5	LPK5	LPB6	LPK6	LPB7	LPK7	LPJ7	LPK8
Capacity nominal (max.)	0.13	0.21	0.25	0.5	0.50	0.50	0.85	0.90	1.00	1.70	1.75	1.85	2.50	3.15	4.00	5.00	8.00	10.00	25.00
Pressure (max.)	3	5	6	12	12	12	14	20	22	24	41	42	44	60	76	96	120	152	240
Connections	3/8"	1/2"	1/2"	1/2"	1/2"	1/2"	1/2"	1/2"	1/2"	1/2"	1/2"	1/2"	1/2"	1/2"	1/2"	1/2"	1/2"	1/2"	1/2"
	1/4"	1/4"	1/4"	1/4"	1/4"	1/4"	1/4"	1/4"	1/4"	1/4"	1/4"	1/4"	1/4"	1/4"	1/4"	1/4"	1/4"	1/4"	1/4"
	1/4"	1/4"	1/4"	1/4"	1/4"	1/4"	1/4"	1/4"	1/4"	1/4"	1/4"	1/4"	1/4"	1/4"	1/4"	1/4"	1/4"	1/4"	1/4"

### Engineering Data

#### Pump Head Materials Available:

GFPPL  
PVC  
PVDF  
316 SS  
PTFE-faced CSPE-backed

#### Diaphragm:

#### Check Valves Materials Available:

PTFE  
CSPE  
Viton  
Ceramic  
PTFE  
316 SS  
Alloy C

#### Balls:

GFPPL  
PVC  
PVDF  
316 SS  
Alloy C

#### Fittings Materials Available:

GFPPL  
PVC  
PVDF  
316 SS  
Alloy C

#### Bleed Valve:

Same as fitting and check valve selected, except 316SS

#### Injection Valve & Foot Valve Assy:

Same as fitting and check valve selected

#### Tubing:

Clear PVC  
White PE

Important: Material Code - GFPPL=Glass-filled Polypropylene, PVC=Polyvinyl Chloride, PE=Polyethylene, PVDF=Polyvinylidene Fluoride, CSPE=Generic formulation of Hypalon, a registered trademark of E.I. DuPont Company, Viton is a registered trademark of E.I. DuPont Company. PVC wetted and recommended for sodium hypochlorite.

### Dimensions

Series E Plus Dimensions (inches)															
Model No.	A	B	B1	C	D	E	Shpg Wt	Model No.	A	B	B1	C	D	E	Shpg Wt
LPK2	5.4	10.3	-	10.8	7.5	8.9	13	LPK4	6.2	10.9	-	11.2	8.2	9.5	21
LPB2	5.4	10.3	-	10.8	7.5	8.9	13	LPK5	6.2	11.3	-	11.2	8.2	9.9	21
LPA2	5.4	10.3	-	10.8	7.5	8.9	13	LPK6	6.2	11.3	-	11.9	8.2	9.9	21
LPD3	5.4	10.8	-	10.7	7.5	9.2	15	LPK7	6.1	11.7	-	11.9	8.2	10.3	21
LPB3	5.4	10.8	-	11.2	7.5	9.2	15	LPK8	6.1	11.7	-	11.3	8.2	10.3	21
LPA3	5.4	10.8	-	11.2	7.5	9.2	15	LPK9	6.1	11.7	-	11.3	8.2	10.3	21
LPF4	5.4	10.8	-	11.2	7.5	9.2	18	LPK10	5.4	10.9	-	11.7	7.5	9.5	18
LPB4	5.4	10.8	-	11.2	7.5	9.2	18	LPK11	6.1	11.7	-	11.2	8.2	10.3	21
LPA4	5.4	10.8	-	11.2	7.5	9.2	18								

NOTE: Inches X 2.54 = cm. If the LPK8 is designed without a bleed valve available

**PULSAFEEDER**  
27101 Airport Road  
Punta Gorda, FL 33982  
Phone: +1(941) 575-3800  
Fax: +1(941) 575-4085

www.pulsafeed.com

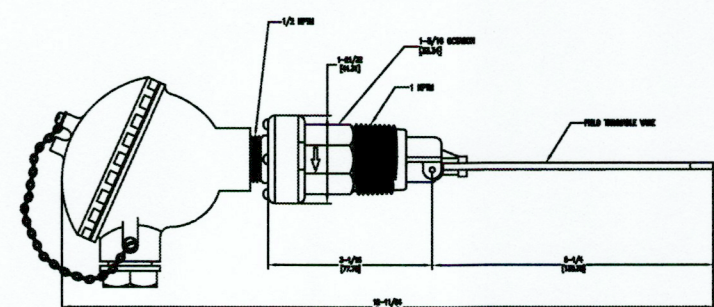


An ISO 9001 Certified Company

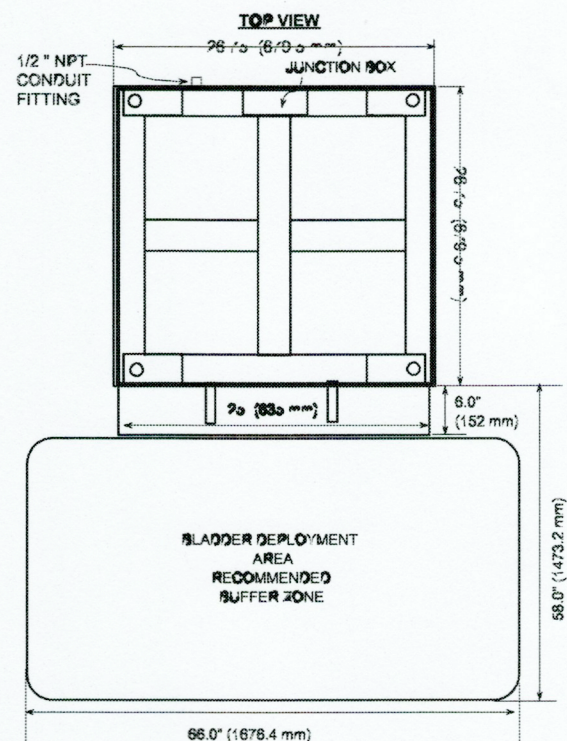
EMP021 A20

IPX

## PULSAFEEDER SERIES E PLUS



## V8 FLOTEST SWITCH DWYER INSTRUMENTS, INC.



## Model 4042WB-26™ Spill Containment Drum Scale w/Bladder General Specifications

Indicator/Controller:	3-1/2 Digit	4-1/2 Digit	1020™	1099™C.P.C.
Platform Size & (Containment Capacities):	26"x32" (11 gal.) — (77 gal. total with deployed bladder) – other sizes available			
Platform Height:	7.5" (190.5 mm)			
Gross Capacity:	Up to 2000 lbs. (908 kg) – other capacities available (150% overload protection is provided)			
Accuracy:	0.5% of full capacity		0.1%-0.25% full capacity	
Resolution:	0.1 up to 199.9, or 1.0 over 200 lbs. (kg)		0.1 up to 999.9, or 1.0 over 1000 lbs. (kg)	
4-20 mA:	Standard – scale or loop powered		Standard on Channel 1, Optional on Channel 2 – loop powered	Standard on Channel 1 – loop powered (available for Channels 2 thru 4)
Level Indication/ Relay Contacts:	Optional	(2) Standard	Optional – Up to 4 (as high or low) on one channel or more than one per channel for a total of 4 set points with relay contract	
Power:	85 VAC to 265 VAC	120VAC, 50/60 Hz, 0.3A 240VAC, 50/60Hz, 0.15A	85VAC to 265VAC	
Enclosure:	NEMA 4X, UL Approved Enclosure			
Shipping Weight:	96 lbs			

### Typical Specifications

The Spill Containment Scale must have rugged steel frame that is zinc oxide primed and dry powder epoxy coated. The integral containment deck and basin shall be solid polyethylene. There must be an expandable bladder to provide additional containment capacity if there is a major spill. All hardware must be stainless steel. Scale frame height shall not exceed 1.5'. Total height with containment deck shall not exceed 7.5'. Load cells must be sealed in gasketed PVC enclosure. All 4 load cells shall be located outside the chemical containment basin to eliminate damage due to chemical spills.

5 year FULL warranty on ALL products!

Scale shall be a Model 4042WB-26™ as manufactured by Scaletron Industries Ltd., Plumsteadville, PA.

### STANDARD INDICATOR:

3-1/2 Digit LCD Indicator: Indicator must be electronic with digital display with characters 0.5 inches high, with 0.1 lb. or 0.1 kg resolution and housed in a NEMA 4X, UL approved enclosure. Indicator is required to have 4-20 mA output selectable as scale powered or loop powered, standard. Indicator must have a knob to set tare weight. Accuracy is 0.5% of full scale, or better.

### OPTIONAL INDICATORS/CONTROLLERS:

4-1/2 Digit LED Indicator: Indicator must be electronic with digital display with characters 0.56 inches high and housed in a NEMA 4X, UL approved enclosure. An output of 4-20 mA, 0-20 mA, or -8 to +12 mA, selectable as scale or loop powered to provide versatility to interface with related equipment, must be standard equipment. Indicator comes with two low level relay contacts, standard. A knob to set tare weights is required. Indicator must be capable of 0.1 lb. or 0.1 kg up to 1000.0 lbs. or kg. Accuracy is 0.5% of full scale, or better.

Model 1020™ 5 Digit Controller: Controller must be electronic with a two line, backlit alphanumeric digital display and housed in a NEMA 4X, UL approved enclosure. Available as single or dual channel and capable of displaying two channels simultaneously. A loop powered programmable output of 4-20 mA and four set points per channel must be standard equipment. Indicator must be capable of 0.1 lb. or 0.1 kg up to 1500 lbs. or 680 kg. Accuracy is 0.25% of full scale, or better.

Model 1099™ Chemical Process Controller see separate specification.

© Scaletron Industries Ltd.

MAY 2017

## SCALETRON DRUM SCALE & CONTAINMENT

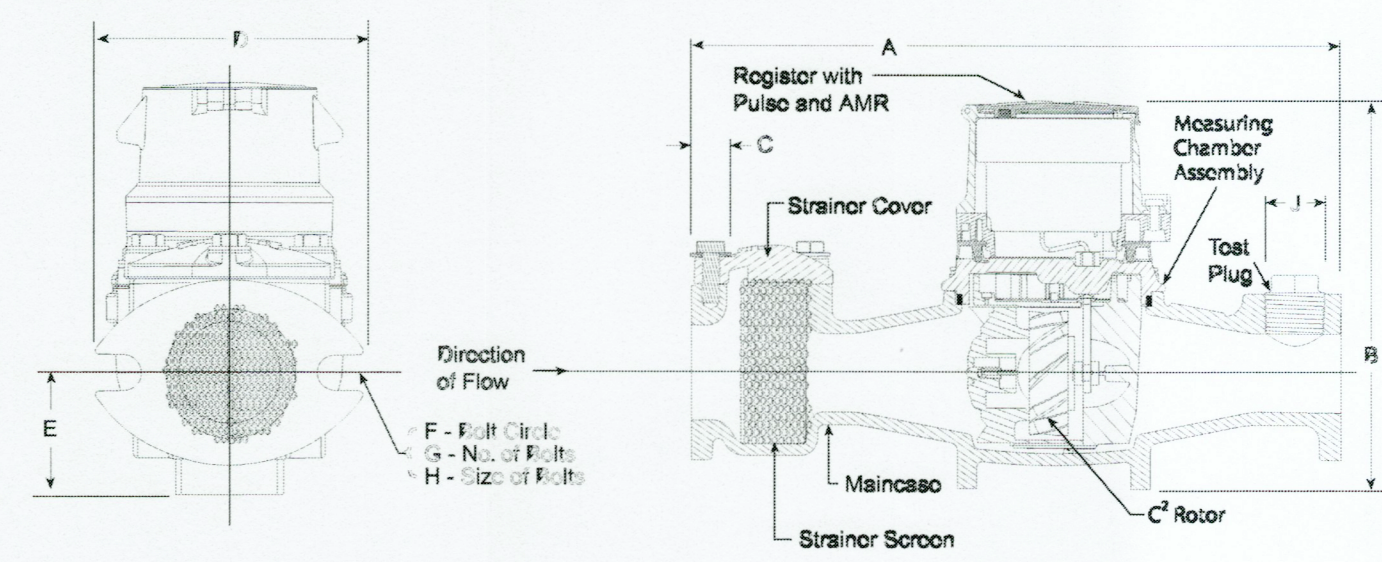
## OMNI C<sup>2</sup> FLOWMETER



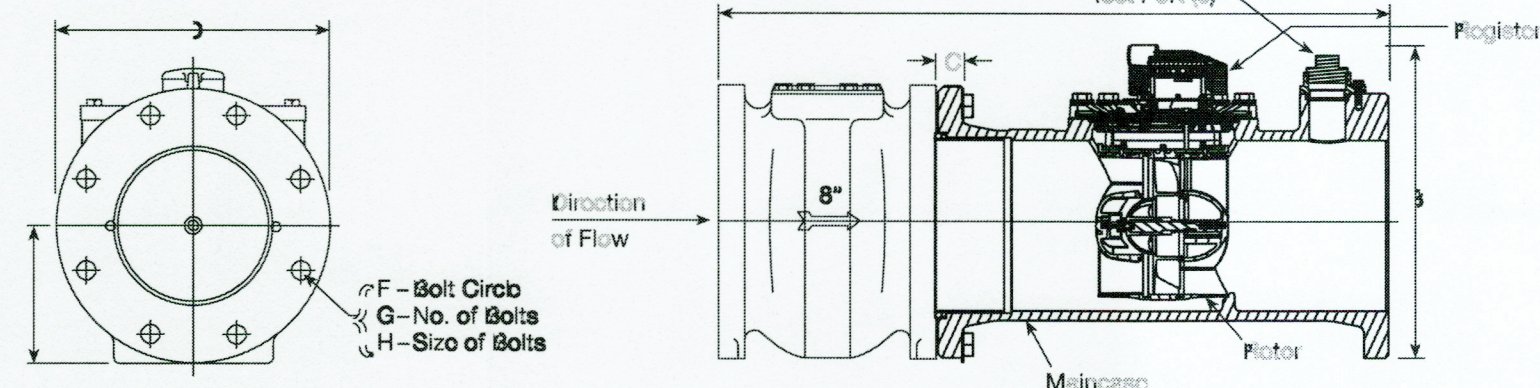
DS-W-OMC-00-00-0611-03-A  
Page 2 of 5

OMNI C2 : 1-1/2", 2", 3", 4", 6", 8" and 10" Sizes

OMNI C2 : 1 1/2" - 6"



OMNI C2 : 8" - 10"



### DIMENSIONS AND NET WEIGHTS

Meter and Pipe Size	Normal Operating Range		Connections A	B	C	D	E	F G H	J	Net Weight	Shipping Weight			
1-1/2" DN 40mm	5 gpm 11.4 m³/hr	200 gpm 41.6 m³/hr	Flanged	13" 330mm	7-7/8" 200mm	15/16" 24mm	5-1/8" 130mm	2-5/16" 59mm	4" 102mm	2	5/8" 16mm	1" 25mm	18.8 lbs. 8.53 kg.	22.5 lbs. 10.20 kg.
2" DN 50mm	5 gpm 11.4 m³/hr	200 gpm 41.6 m³/hr	Flanged	15-1/4" 387mm	7-7/8" 200mm	1" 25mm	5-3/4" 146mm	2-5/16" 59mm	4-1/2" 114mm	2	3/4" 19mm	1" 25mm	26.4 lbs. 11.99 kg.	32.5 lbs. 14.74 kg.
3" DN 80mm	1 gpm 20.8 m³/hr	500 gpm 104.0 m³/hr	Flanged	17" 432mm	8-3/4" 222mm	3/4" 19mm	7-7/8" 200mm	4-1/8" 105mm	6" 153mm	4	5/8" 16mm	1" 25mm	45 lbs. 20.41 kg.	72.8 lbs. 33.02 kg.
4" DN 100mm	1.5 gpm 31.2 m³/hr	1000 gpm 208.0 m³/hr	Flanged	20" 508mm	11-3/16" 284mm	15/16" 24mm	8-1/8" 212mm	4-3/4" 121mm	7-1/2" 191mm	8	5/8" 16mm	1-1/2" 40mm	64.9 lbs. 29.44 kg.	72.8 lbs. 33.02 kg.
6" DN 150mm	3 gpm 61.9 m³/hr	2500 gpm 516.0 m³/hr	Flanged	24" 610mm	13-1/4" 336mm	15/16" 24mm	11" 279mm	5-3/4" 146mm	9-1/2" 242mm	8	3/4" 19mm	1-1/2" 40mm	130 lbs. 58.9 kg.	155 lbs. 70.3 kg.
8" DN 200mm	4 gpm .01 834.0 m³/hr	2700 gpm 557.0 m³/hr	Flanged	30-1/8" 765 mm	15" 381 mm	11/16" 17 mm	13-1/2" 343 mm	6-3/4" 172 mm	11-3/4" 300 mm	8	3/4" 19 mm	2" NPT	471 lbs. 214 kg.	521 lbs. 236 kg.
10" DN 250mm	5 gpm 11.4 m³/hr	4000 gpm 830.0 m³/hr	Flanged	41-1/8" 1045mm	19" 485mm	11/16" 17mm	16" 406mm	8-1/2" 216mm	14-1/4" 362mm	12	7/8" 22mm	2" NPT	685 lbs. 311 kg.	745 lbs. 338 kg.

WESTERN VIRGINIA  
WATER AUTHORITY

WATER QUALITY  
1502 BROWNLEE AVE.  
ROANOKE, VA 24014



## SPRING HOLLOW WTF SODIUM PERMANGANATE & HYPOCHLORITE FEED SYSTEMS EQUIPMENT SPECIFICATION

Rev	Description	Date	By

Designed: WGP  
Drawn: WGP  
Checked: RBB  
Approved: RBB  
Date: 3-16-2020  
Project:

C5  
SHEET 5 OF 5