

NOTE:-

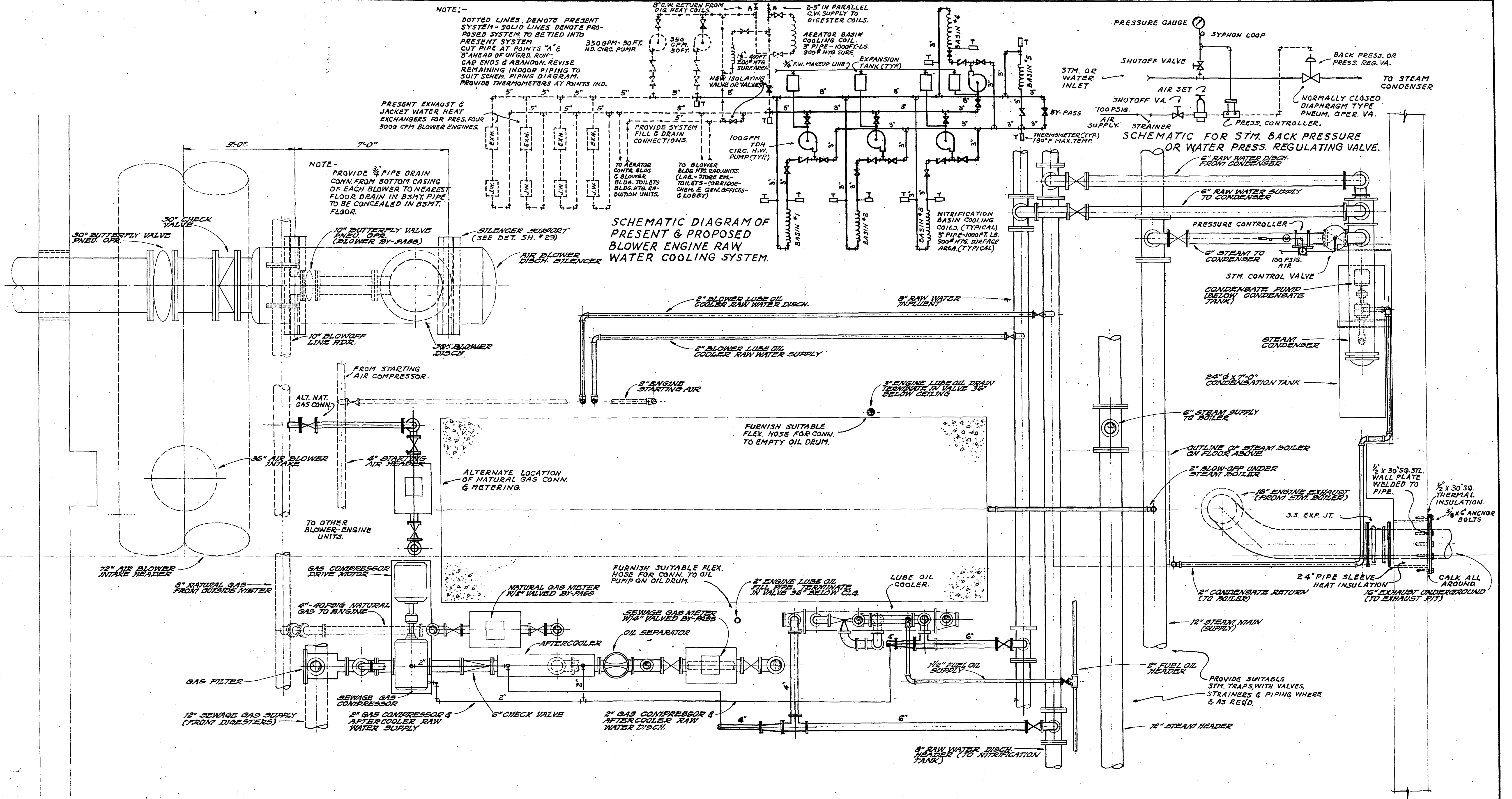
DOTTED LINES DENOTE PRESENT SYSTEM - SOLID LINES DENOTE PROPOSED SYSTEM TO BE TIED INTO PRESENT SYSTEM. CUT PIPE AT POINTS "A" & "B" AHEAD OF UNGRD. RUN - CAR ENDS & ABANDON. REVISE REMAINING INDOOR PIPING TO SUIT SCHEM. PIPING DIAGRAM. PROVIDE THERMOMETERS AT POINTS IND.

PRESENT EXHAUST & JACKET WATER HEAT EXCHANGERS FOR PRES. FOUR 5000 CFM BLOWER ENGINES.

NOTE - PROVIDE 3/4" PIPE DRAIN CONN. FROM BOTTOM CASING OF EACH BLOWER TO NEAREST FLOOR DRAIN IN BSMT. PIPE TO BE CONCEALED IN BSMT. FLOOR.

SCHEMATIC DIAGRAM OF PRESENT & PROPOSED BLOWER ENGINE RAW WATER COOLING SYSTEM.

SCHEMATIC FOR STM. BACK PRESSURE OR WATER PRESS. REGULATING VALVE.



TYPICAL PLAN LAYOUT FOR AIR BLOWER UNIT
SCALE: 1/2"=1'-0"
(THREE (3) REQUIRED)

CONTR. "E"

ADDITIONS TO SEWAGE TREATMENT PLANT
ROANOKE, VIRGINIA

BLOWER BLDG.
TYP. MECH. PIPING PLAN

ALVORD, BURDICK & HOWSON
ENGINEERS CHICAGO

1973