

GENERAL NOTES (DEMOLITION AND REMOVAL):

1. EXISTING TOPOGRAPHIC INFORMATION SHOWN HEREON IS TAKEN FROM ACTUAL FIELD SURVEYS PERFORMED BY MATTERN & CRAIG, INC. REFER TO SHEET C1.1 FOR ADDITIONAL INFORMATION REGARDING THE SURVEY.
2. WHERE INDICATED OR WHERE IN CONFLICT WITH NEW CONSTRUCTION, EXISTING TOPOGRAPHICAL AND PLANIMETRIC FEATURES (ASPHALT PAVEMENT, CONCRETE PAVEMENT AND SIDEWALK, CURB, CURB AND GUTTER, LIGHT POLES, LANDSCAPING FEATURES AND SITE APPURTENANCES) WITHIN DEMOLITION BOUNDARY ARE TO BE REMOVED.
3. THE LOCATION OF EXISTING UTILITIES, INCLUDING UNDERGROUND UTILITIES, ARE INDICATED ON THE DRAWINGS INSOFAR AS THEIR EXISTENCE AND LOCATION WERE KNOWN AT THE TIME OF THE PREPARATION OF THE DRAWINGS. UNDERGROUND UTILITIES SHOWN HEREON ARE BASED ON THE SURVEYED LOCATION OF FIELD MARKINGS PERFORMED BY OTHERS OR TAKEN FROM "AS-BUILT" DRAWINGS PROVIDED BY OWNER. HOWEVER, NOTHING IN THESE CONTRACT DOCUMENTS SHALL BE CONSTRUED AS A GUARANTEE THAT SUCH UTILITIES ARE IN THE LOCATION INDICATED OR THAT THEY ACTUALLY EXIST, OR THAT OTHER UTILITIES ARE NOT WITHIN THE AREA OF OPERATIONS. THE CONTRACTOR SHALL MAKE ALL NECESSARY INVESTIGATIONS TO DETERMINE THE EXISTENCE AND LOCATIONS OF SUCH UTILITIES. THE CONTRACTOR IS RESPONSIBLE FOR MAINTENANCE AND PROTECTION OF EXISTING UTILITIES AND STRUCTURES DURING THE EXECUTION OF THE WORK.
4. ALL EXISTING UTILITIES ARE TO REMAIN IN PLACE AND ACTIVE UNLESS OTHERWISE NOTED. CONTRACTOR SHALL COORDINATE WITH UTILITY SERVICE COMPANY PRIOR TO PERFORMING DEMOLITION WORK.
5. THE CONTRACTOR SHALL CONTACT "MISS UTILITY" (CALL 811 OR 1-800-552-7001) 48 HOURS PRIOR TO WORKING IN THE VICINITY OF THE EXISTING UTILITIES. CONTRACTOR SHALL REFER TO THE VIRGINIA "UNDERGROUND UTILITY DAMAGE PREVENTION ACT" FOR ADDITIONAL INFORMATION AND REQUIREMENTS.
6. A "RIGHT-OF-WAY EXCAVATION PERMIT" MUST BE OBTAINED BY THE CONTRACTOR FROM THE CITY OF ROANOKE PRIOR TO ANY CONSTRUCTION WITHIN THE RIGHT-OF-WAY. THE PERMIT APPLIES TO ALL WORK WITHIN THE PUBLIC RIGHT-OF-WAY, INCLUDING BUT NOT LIMITED TO DRIVEWAY CONNECTION TO RIGHT-OF-WAY, INSTALLATION OF SIDEWALKS, AND UTILITY CONNECTIONS. THIS PERMIT IS SUBMITTED TO THE CITY "PERMIT CENTER" AND IS ADMINISTERED BY THE TRANSPORTATION DIVISION. ALL CONSTRUCTION PERFORMED WITHIN THE RIGHT-OF-WAY SHALL CONFORM TO THE CITY OF ROANOKE "RIGHT-OF-WAY EXCAVATION AND RESTORATION STANDARDS."
7. REFER TO "CITY OF ROANOKE- CONSTRUCTION PROCEDURE REQUIREMENTS" ON SHEET C0.1 FOR ADDITIONAL REQUIREMENTS.

EROSION & SEDIMENT CONTROL GENERAL NOTES:

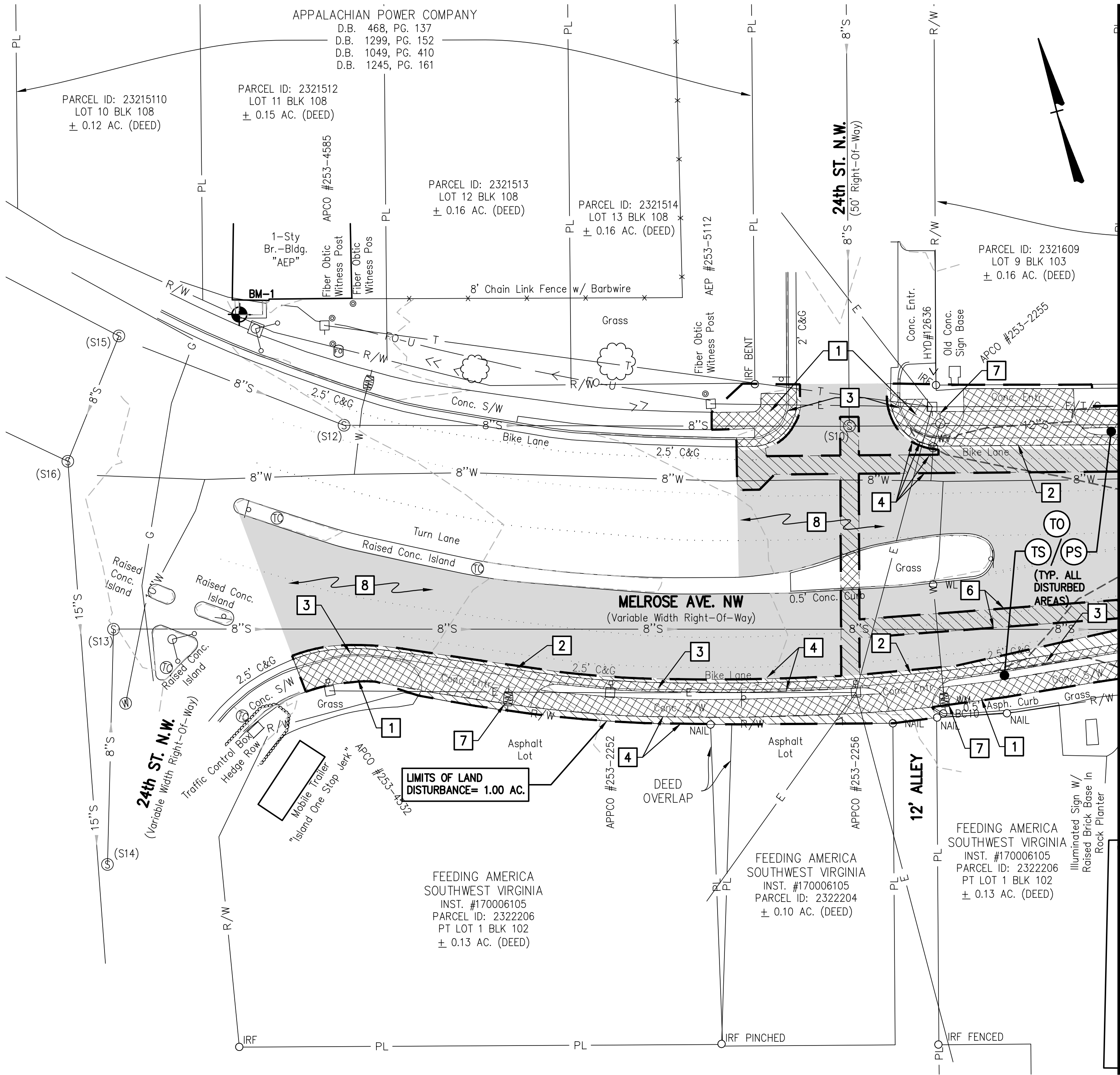
(ADOPTED FROM TABLE 6-1 OF THE VIRGINIA EROSION AND SEDIMENT CONTROL HANDBOOK)

NOTE: NOT ALL STANDARD NOTES BELOW MAY APPLY TO THE WORK OF THIS PROJECT. CONTRACTOR SHALL REVIEW THESE REQUIREMENTS IN DETAIL AND, ALONG WITH THE REQUIREMENTS OF THE "MINIMUM STANDARDS," EXECUTE THE WORK AND APPLY THE MEASURES IN A WAY THAT MINIMIZES THE POTENTIAL FOR EROSION AND DOWNSTREAM SEDIMENTATION.

- ES-1. UNLESS OTHERWISE INDICATED, ALL VEGETATIVE AND STRUCTURAL EROSION AND SEDIMENT CONTROL PRACTICES WILL BE CONSTRUCTED AND MAINTAINED ACCORDING TO MINIMUM STANDARDS AND SPECIFICATIONS OF THE VIRGINIA EROSION AND SEDIMENT CONTROL HANDBOOK AND VIRGINIA REGULATIONS 4VAC50-30 EROSION AND SEDIMENT CONTROL REGULATIONS.
- ES-2. UNLESS OTHERWISE NOTED HEREON OR STIPULATED BY THE LAND DISTURBING PERMIT, THE PLAN APPROVING AUTHORITY MUST BE NOTIFIED ONE WEEK PRIOR TO THE PRECONSTRUCTION CONFERENCE, ONE WEEK PRIOR TO THE COMMENCEMENT OF LAND DISTURBING ACTIVITY, AND ONE WEEK PRIOR TO THE FINAL INSPECTION.
- ES-3. UNLESS OTHERWISE NOTED IN THE E&SC NARRATIVE, PERIMETER CONTROLS AND SEDIMENT TRAPS SHALL BE CONSTRUCTED AS A FIRST STEP IN ANY LAND DISTURBING ACTIVITY AND SHALL BE MADE FUNCTIONAL BEFORE UPSLOPE LAND DISTURBANCE TAKES PLACE.
- ES-4. A COPY OF THE APPROVED EROSION AND SEDIMENT CONTROL PLAN SHALL BE MAINTAINED ON THE SITE AT ALL TIMES.
- ES-5. PRIOR TO COMMENCING LAND DISTURBING ACTIVITIES IN AREAS OTHER THAN INDICATED ON THESE PLANS (INCLUDING, BUT NOT LIMITED TO, OFF-SITE BORROW OR WASTE AREAS), THE CONTRACTOR SHALL SUBMIT A SUPPLEMENTARY EROSION CONTROL PLAN FOR REVIEW AND APPROVAL BY THE PLAN APPROVING AUTHORITY OR PROVIDE DOCUMENTATION OF APPROVAL / PERMITTING FOR SAID SITE.
- ES-6. THE CONTRACTOR IS RESPONSIBLE FOR INSTALLATION OF ANY ADDITIONAL EROSION CONTROL MEASURES NECESSARY TO PREVENT EROSION AND SEDIMENTATION AS DETERMINED BY THE PLAN APPROVING AUTHORITY.
- ES-7. ALL DISTURBED AREAS ARE TO DRAIN TO APPROVED SEDIMENT CONTROL MEASURES AT ALL TIMES DURING LAND DISTURBING ACTIVITIES AND DURING SITE DEVELOPMENT UNTIL FINAL STABILIZATION IS ACHIEVED.
- ES-8. DURING DEWATERING OPERATIONS, WATER WILL BE PUMPED INTO AN APPROVED FILTERING DEVICE.
- ES-9. THE CONTRACTOR SHALL INSPECT ALL EROSION CONTROL MEASURES PERIODICALLY AND AFTER EACH RUNOFF-PRODUCING RAINFALL EVENT. ANY NECESSARY REPAIRS OR CLEANUP TO MAINTAIN THE EFFECTIVENESS OF THE EROSION CONTROL DEVICES SHALL BE MADE IMMEDIATELY.
- ES-10. THE EROSION AND SEDIMENT CONTROL (E&SC) MEASURES SHOWN ON THESE SHEETS ARE TO BE CONSTRUCTED DURING THE SITE GRADING AND CONSTRUCTION. REFER TO THE FOLLOWING SHEETS FOR EROSION AND SEDIMENT CONTROL NARRATIVE, SEQUENCE OF WORK, DETAILS, AND DESIGN DATA.
- ES-11. STABILIZATION MEASURES SHALL BE APPLIED TO EARTHEN STRUCTURES SUCH AS DAMS, DIKES, AND DIVERSIONS IMMEDIATELY AFTER INSTALLATION.
- ES-12. DURING CONSTRUCTION OF THE PROJECT, SOIL STOCKPILES AND BORROW AREAS SHALL BE STABILIZED OR PROTECTED WITH SEDIMENT TRAPPING MEASURES. THE CONTRACTOR IS RESPONSIBLE FOR THE TEMPORARY PROTECTION AND PERMANENT STABILIZATION OF ALL SOIL STOCKPILES ON SITE AS WELL AS BORROW AREAS AND SOIL INTENTIONALLY TRANSPORTED FROM THE PROJECT SITE.
- ES-13. PERMANENT OR TEMPORARY SOIL STABILIZATION MEASURES SHALL BE APPLIED TO DENUDED AREAS WITHIN SEVEN (7) DAYS AFTER FINAL GRADE IS REACHED ON ANY PORTION OF THE SITE.
- ES-14. TEMPORARY SOIL STABILIZATION MEASURES SHALL BE APPLIED WITHIN SEVEN (7) DAYS TO DENUDED AREAS THAT MAY NOT BE AT FINAL GRADE BUT WILL REMAIN DORMANT FOR LONGER THAN FOURTEEN (14) DAYS. PERMANENT STABILIZATION MEASURES SHALL BE APPLIED TO AREAS THAT ARE TO BE LEFT DORMANT FOR MORE THAN ONE YEAR.
- ES-15. PERMANENT SEEDING APPLIED TO ALL MECHANICALLY STABILIZED SLOPES AND SLOPES STEEPER THAN 3:1 AND SHALL MEET THE FOLLOWING SEED MIXTURE:

POUNDS PER ACRE	SEED TYPE
108	KENTUCKY 31
2	RED TOP
20	SEASONAL NURSE CROP
	(ANNUAL RYE, FOXTAIL MILLET, & WINTER RYE MIX)
20	CROWN VETCH

- ES-16. ALL AREAS DISTURBED BY THE WORK OF THIS PROJECT SHALL BE STABILIZED BY EITHER THE CONSTRUCTION OF A PERMANENT SURFACE SUCH AS CURB, PAVEMENT, OR CONCRETE SIDEWALK, OR STABILIZED BY MEANS OF PERMANENT SEEDING OR ANOTHER APPROVED STABILIZATION METHOD.
- ES-17. FOLLOWING THE COMPLETION OF SITE DEVELOPMENT CONSTRUCTION/GRADING, CONFIRMED STABILIZATION OF ALL DISTURBED AREAS, CONFIRMATION THAT EROSION OR SEDIMENTATION IS NO LONGER OCCURRING ON THE PROJECT SITE OR AT ITS BOUNDARIES, CONFIRMATION THAT DRAINAGE FLOWS ARE FUNCTIONING ACCORDING TO DESIGN, AND APPROVAL HAS BEEN GRANTED BY THE ROANOKE COUNTY EROSION AND SEDIMENT CONTROL INSPECTOR, THE CONTRACTOR MAY THEN BEGIN TO REMOVE THE TEMPORARY EROSION AND SEDIMENT CONTROL DEVICES. THIS WORK SHALL BE DONE IN A CAREFUL, NEAT, AND ORGANIZED MANNER. IF DEWATERING IS REQUIRED, WATER SHALL BE PUMPED TO AN APPROVED FILTERING DEVICE.



DEMOLITION/REMOVAL KEYNOTES:

- 1 REMOVE CONCRETE SIDEWALK AND OTHER CONCRETE SLABS/PADS WHERE SHOWN OR WHERE IN CONFLICT WITH NEW WORK. REMOVE TO THE NEAREST CONSTRUCTION/CONTRACTION JOINT OR SAW-CUT TO PRODUCE NEAT/CLEAN JOINT. WHERE SIDEWALK TO BE REMOVED ABUTS EXISTING SIDEWALK OR CONCRETE/ASPHALT PARKING, ENTRY PLAZA, ETC. THAT IS TO REMAIN, SAW-CUT ALONG EXISTING JOINTS TO ENSURE A UNIFORM BREAK POINT AND FACILITATE REMOVAL.
- 2 REMOVE CONCRETE DRIVEWAY APRON WHERE SHOWN OR WHERE IN CONFLICT WITH NEW WORK. REMOVE TO THE NEAREST CONSTRUCTION/CONTRACTION JOINT OR SAW-CUT TO PRODUCE NEAT/CLEAN JOINT. WHERE DRIVEWAY APRON TO BE REMOVED ABUTS EXISTING SIDEWALK OR CONCRETE/ASPHALT PARKING, ENTRY PLAZA, ETC. THAT IS TO REMAIN, SAW-CUT ALONG EXISTING JOINTS TO ENSURE A UNIFORM BREAK POINT AND FACILITATE REMOVAL.
- 3 REMOVE CONCRETE CURB/CURB & GUTTER WHERE SHOWN OR WHERE IN CONFLICT WITH NEW WORK. REMOVE TO THE NEAREST CONSTRUCTION/CONTRACTION JOINT OR SAW-CUT TO PRODUCE NEAT/CLEAN JOINT. WHERE CONCRETE CURB/CURB & GUTTER TO BE REMOVED ABUTS SIDEWALK OR CONCRETE/ASPHALT PAVEMENT THAT IS TO REMAIN, SAW-CUT AND REMOVE AN ADDITIONAL 1-FOOT OF PAVEMENT TO FACILITATE REMOVAL AND ENSURE A UNIFORM EDGE FOR RE-PAVING. REFER TO TYPICAL SECTIONS FOR ADDITIONAL INFORMATION. NOTE: IN MANY AREAS OF THE PROJECT THE GUTTER IS "OVER PAVED" WITH ASPHALT.
- 4 REMOVE ASPHALT PAVEMENT (SURFACE AND BINDER COURSE, AND AGGREGATE BASE) AND ADJOINING CURB/CURB AND GUTTER WITHIN LIMITS OF DEMOLITION, WHERE SHOWN, OR WHERE REQUIRED FOR CONSTRUCTION OF NEW WORK. WHERE NEW CONCRETE CURB/CURB & GUTTER IS TO BE INSTALLED, SAW-CUT AND REMOVE AN ADDITIONAL 1-FOOT OF PAVEMENT TO FACILITATE PLACEMENT OF NEW CURB/CURB & GUTTER TO ENSURE A UNIFORM EDGE FOR RE-PAVING. REFER TO TYPICAL SECTIONS FOR ADDITIONAL INFORMATION.
- 5 REMOVE TREES, TREE GRATES, SHRUBS, AND OTHER LANDSCAPE FEATURES WITHIN DEFINED PROJECT WORK LIMITS OR WHERE IN CONFLICT WITH NEW WORK. TREES INDICATED TO REMAIN SHALL BE PROTECTED DURING CONSTRUCTION.
- 6 SAW-CUT AND REMOVE ASPHALT FOR INSTALLATION OF NEW STORM DRAINAGE, WATER, AND SANITARY SEWER SYSTEM. REFER TO SHEETS C4.1 THRU C4.3 FOR ADDITIONAL INFORMATION.
- 7 EXISTING UTILITY FEATURES (WATER METER, MANHOLE, FIRE HYDRANT, ETC.) WITHIN LIMITS OF DEMOLITION AND REMOVAL SHALL BE SUPPORTED AND PROTECTED FROM DAMAGE DURING DEMOLITION AND REMOVAL OF ADJOINING SURFACES. REFER TO GENERAL NOTES (DEMOLITION AND REMOVAL) AND SHEETS C4.1 THROUGH C4.3 FOR ADDITIONAL INFORMATION AND REQUIREMENTS FOR ADJUSTMENTS AND/OR RELOCATIONS.
- 8 MILL AND OVERLAY EXISTING PAVEMENT TO EXTENT INDICATED. REFER TO NOTES AND SEQUENCE OF WORK ON SUBSEQUENT SHEETS.

REFER TO SHEETS C4.1 THRU C4.3 FOR WATER, SANITARY SEWER LINES, WATER METERS, CLEANOUTS AND OTHER SYSTEM COMPONENTS TO BE ABANDONED OR REMOVED.

UTILITY OWNERS

ELECTRIC:  
APPALACHIAN POWER  
40 FRANKLIN ROAD SOUTHWEST  
ROANOKE, VIRGINIA 24011  
PHONE: 1-800-956-4237

GAS:  
ROANOKE GAS  
519 KIMBLE AVE. N. E.  
ROANOKE, VIRGINIA 24030  
PHONE: 1-540-938-3800

COMMUNICATIONS:  
VERIZON  
4843 OAKLAND BOULEVARD  
ROANOKE, VIRGINIA 24012  
PHONE: 1-434-942-8192

WATER AND SEWER:  
WESTERN VIRGINIA WATER AUTHORITY  
3322 HOLLINS RD. N.E.  
ROANOKE, VIRGINIA, 24012  
PHONE: 1-540-853-5641

REFER TO SHEET C2.2 FOR "SEQUENCE OF WORK" AND SHEET C2.1 FOR "EROSION AND SEDIMENT CONTROL NOTES".

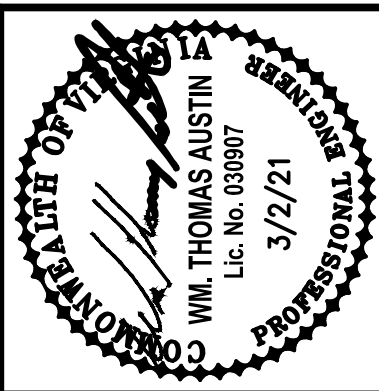
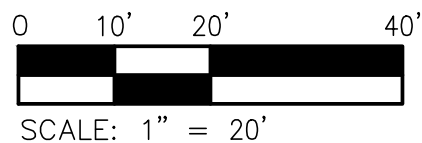
EROSION & SEDIMENT CONTROL SYMBOLS LEGEND:

NOTE: REFER TO SHEET C2.4 FOR DETAILS/SECTIONS AND ADDITIONAL REQUIREMENTS.

TEMPORARY INLET PROTECTION (STD. 3.07)	TOPSOILING (STD. 3.30)	PERMANENT SEEDING MIXTURE (STD. 3.32)
TEMPORARY RIGHT-OF-WAY DIVERSION (STD. 3.11)	TEMPORARY SEEDING (STD. 3.31)	LIMITS OF LAND DISTURBANCE

DEMOLITION LEGEND:

- REMOVE ASPHALT PAVEMENT [4] [6]
- REMOVE CONC. SIDEWALK, CONC. ENTRANCES AND CONC. CURB [1] [2] [3]
- PAVEMENT MILLING AND OVERLAY [8]
- REMOVE UTILITIES [7] (SEE SHEETS C4.1 THRU C4.3)
- LIMITS OF DEMOLITION AND REMOVAL / LAND DISTURBANCE
- SOIL BORING LOCATION



Revisions	Date

Issue Date:	MARCH 2, 2021
Drawn By:	ARB
Designed By:	ARB
Checked By:	WTA
Date:	3/2/21

**Mattern & Craig**  
ENGINEERS/SURVEYORS  
701 FIRST STREET, S.W.  
ROANOKE, VIRGINIA 24016  
(540) 345-9342  
FAX (540) 345-7691

MELROSE AVE. STREETScape IMPROVEMENTS - 22ND TO 24TH ST.

**DEMOLITION AND REMOVAL/EROSION & SEDIMENT CONTROL PLAN-AREA 'A'**

ROANOKE, VIRGINIA

Vertical Scale: N/A

Horizontal Scale: 1" = 20'

Commission Number: 4049

Sheet No.: **C2.1**