

1. SEE ARCHITECTURAL, MECHANICAL, ELECTRICAL AND/OR EQUIPMENT MANUFACTURERS DRAWINGS FOR SIZES AND/OR LOCATION OF EMBEDMENTS IN CONCRETE.
2. ALL INFORMATION ON EXISTING CONDITIONS IS OBTAINED FROM BEST AVAILABLE SOURCES. THE ACTUAL AS-BUILT CONSTRUCTION MAY POSSIBLY DIFFER FROM WHAT IS ASSUMED IN THE CONTRACT DOCUMENTS. THE CONTRACTOR SHALL VERIFY ALL EXISTING CONDITIONS NOTED ON THE CONTRACT DOCUMENTS, AND SHALL NOTIFY THE ENGINEER IN WRITING OF ANY DISCREPANCIES BETWEEN THE EXISTING CONDITIONS AND THE CONTRACT DOCUMENTS.
3. THE CONTRACTOR SHALL REQUEST IN WRITING AND HIGHLIGHT ON THE SHOP DRAWINGS ANY PROPOSED CHANGES IN THE MATERIALS, DETAILS, ETC. INDICATED ON THE DRAWINGS OR SPECIFICATIONS. ANY CHANGES MUST BE APPROVED BY THE ENGINEER IN WRITING.
4. THE DESIGN, ADEQUACY, AND SAFETY OF BRACING, SHORING, TEMPORARY SUPPORTS, ETC. IS THE SOLE RESPONSIBILITY OF THE CONTRACTOR.

FOUNDATIONS

1. FOOTING ELEVATIONS SHOWN REPRESENT THE MINIMUM DEPTH TO WHICH FOOTINGS SHALL BE CARRIED. IF FOOTING EXCAVATIONS REVEAL DISTURBED, UNSTABLE, OR UNSUITABLE SOIL, THE ENGINEER SHALL BE NOTIFIED. CONTRACTOR SHALL OBTAIN THE SERVICES OF A SOILS ENGINEER OR TESTING FIRM TO VERIFY BEARING CAPACITY OF SOIL AND LATERAL LOAD FROM BACKFILL MATERIALS. ALL UNSUITABLE FOUNDATION MATERIAL SHALL BE REMOVED AND FOOTINGS SHALL REST ON UNDISTURBED SOIL OR PRE-ENGINEERED FILL USING SUITABLE MATERIAL OR COMPACTED STONE BASE COURSE WITH A MINIMUM BEARING CAPACITY OF 3,000 PSF. COMPACT EACH LAYER OF FILL OR BACKFILL TO 95 % OF THE MAXIMUM DENSITY AT OPTIMUM MOISTURE CONTENT AS DETERMINED BY ASTM D 698. DO NOT DISTURB EXISTING FOUNDATIONS.

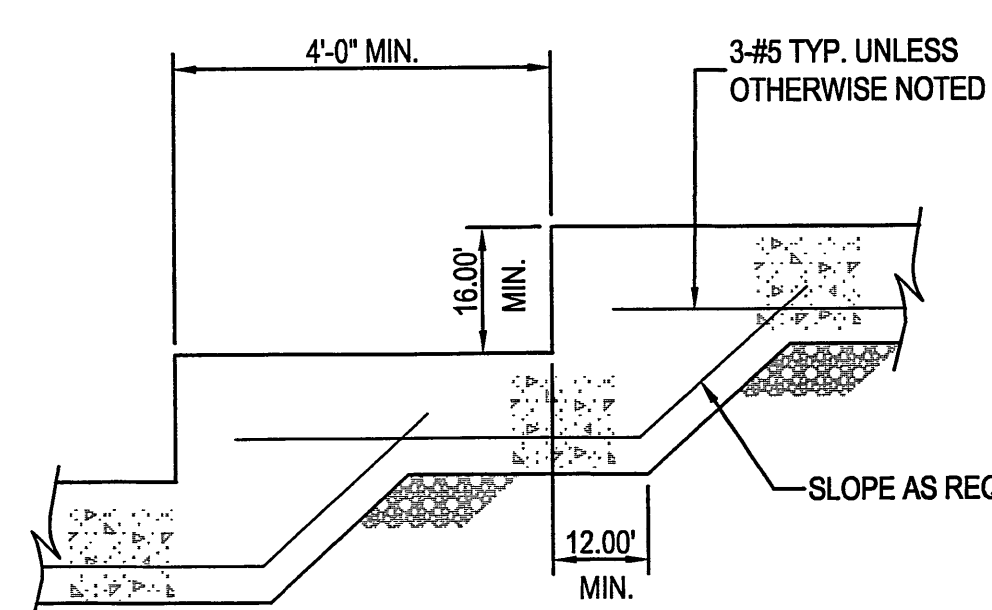
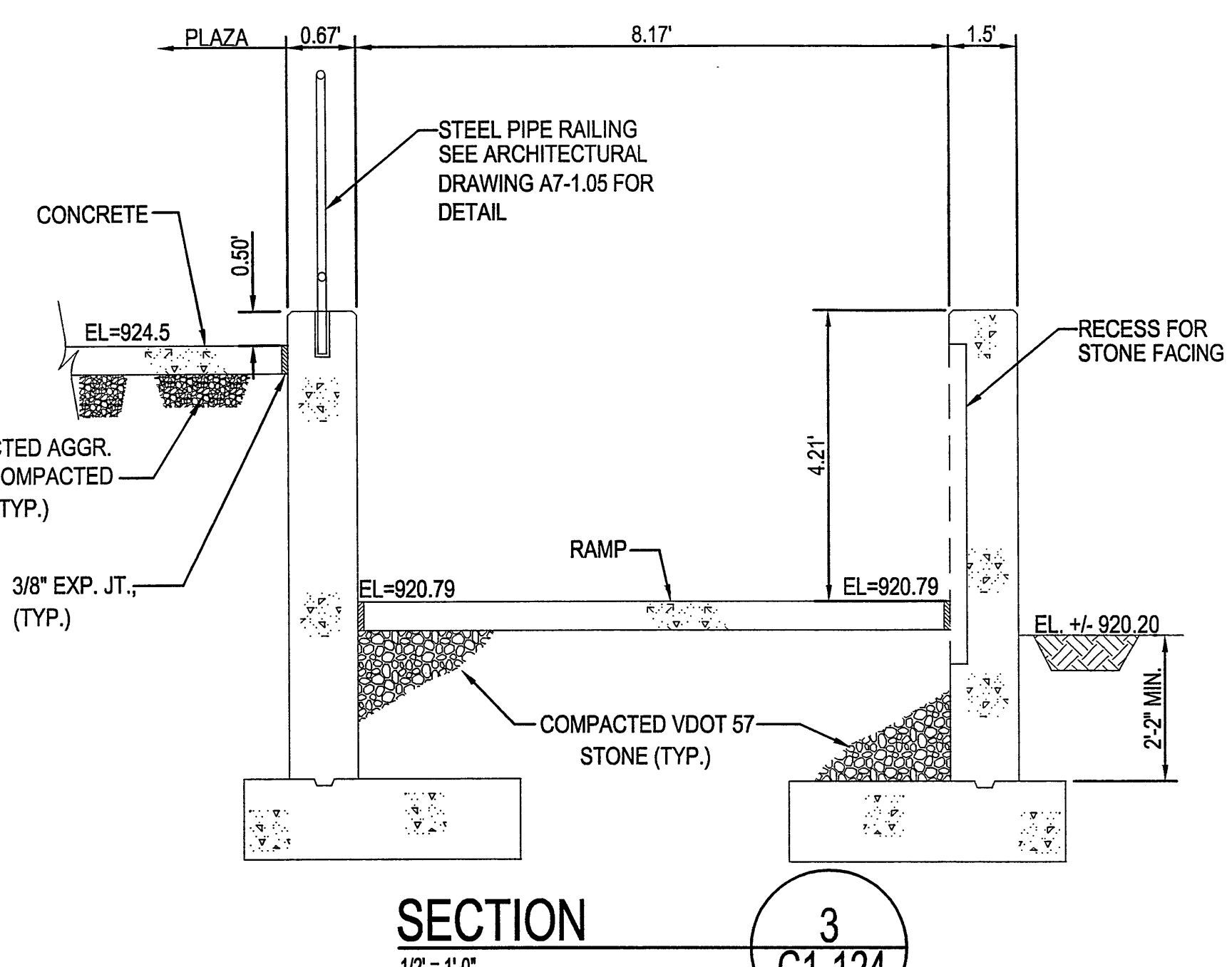
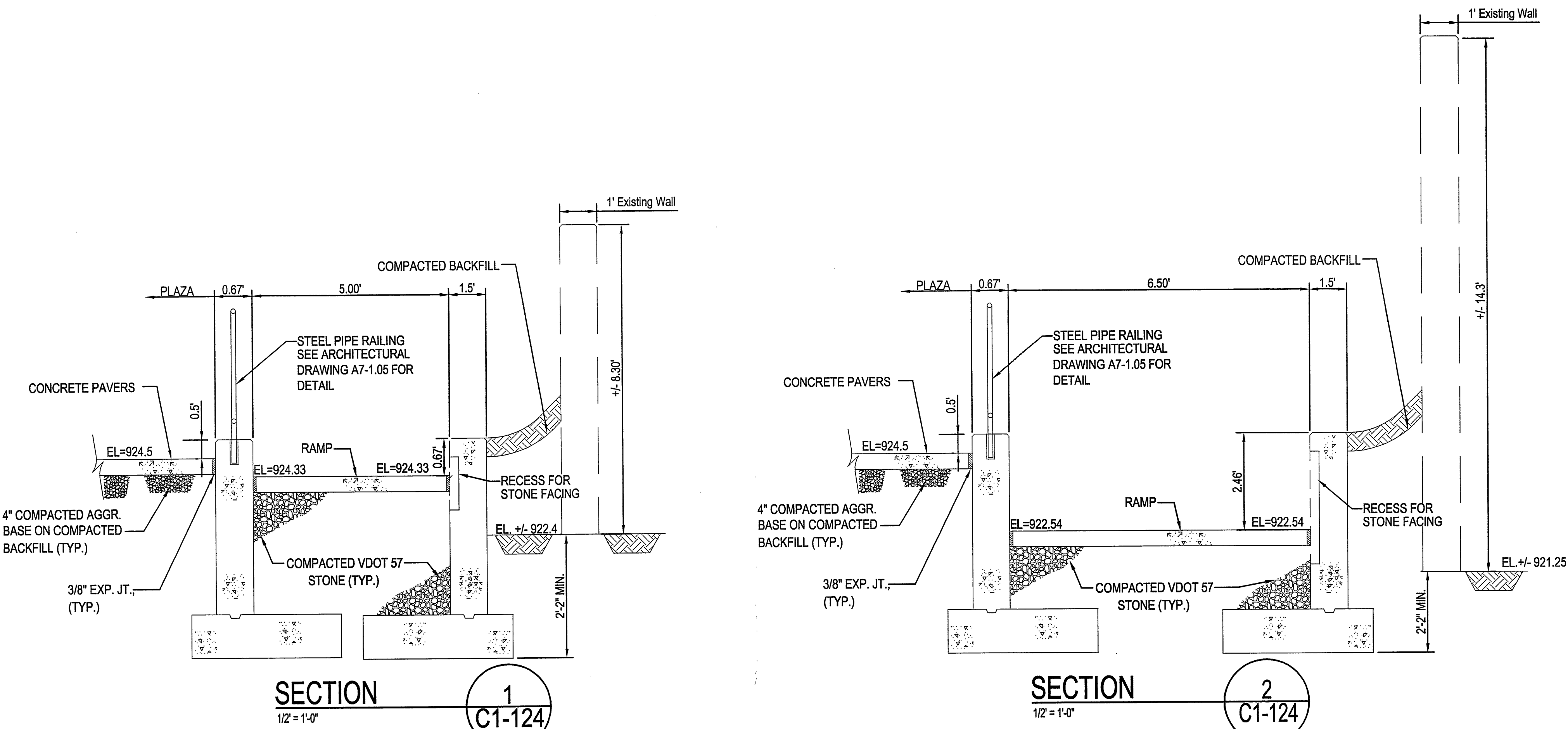
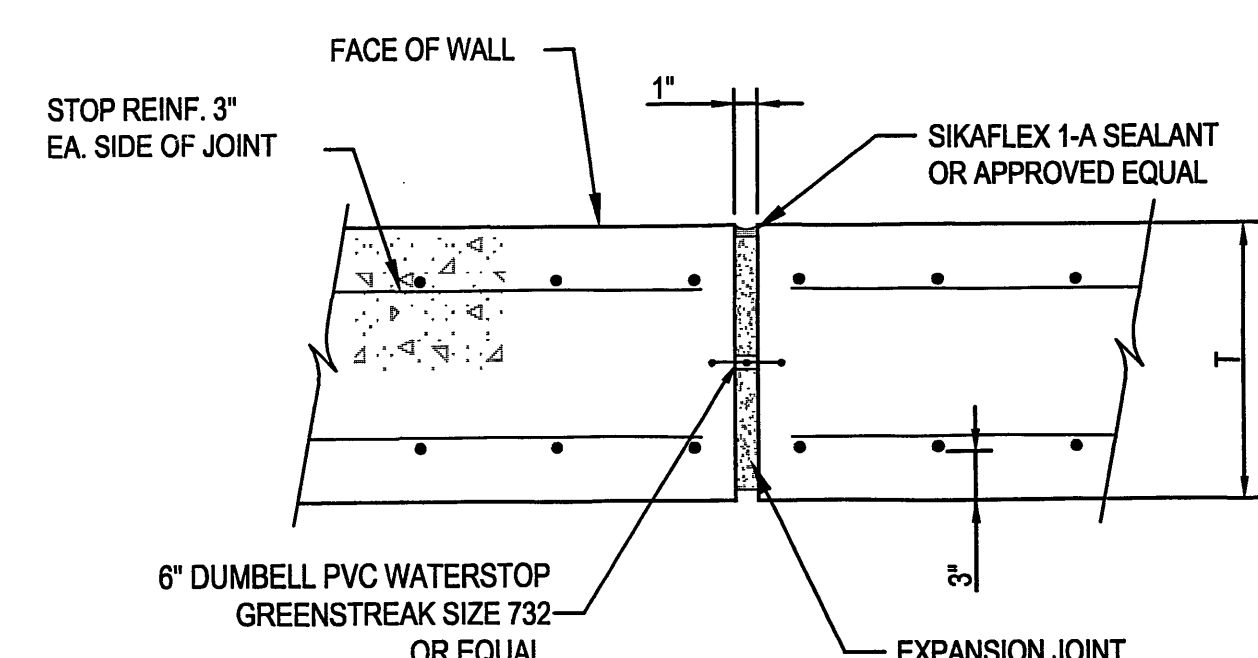
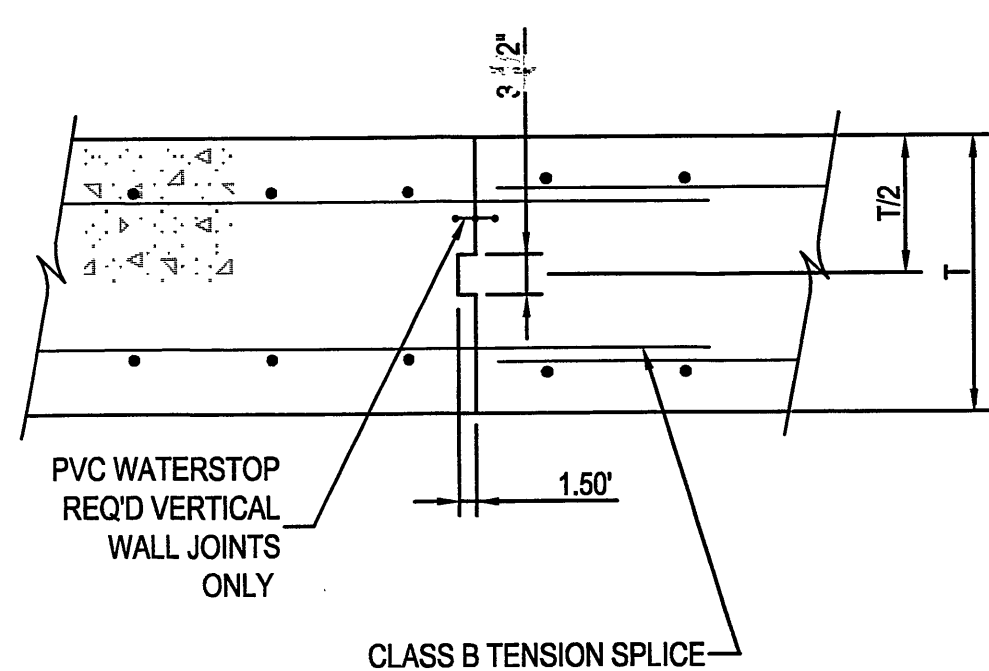
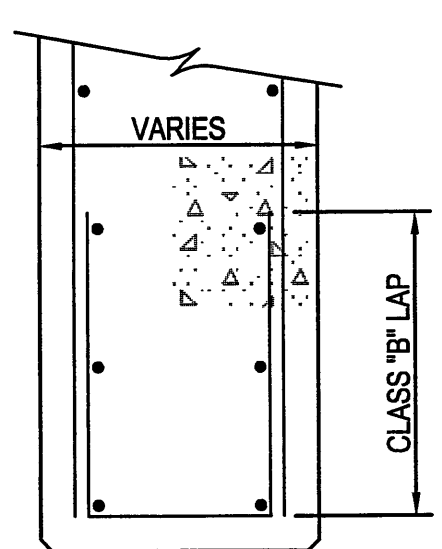
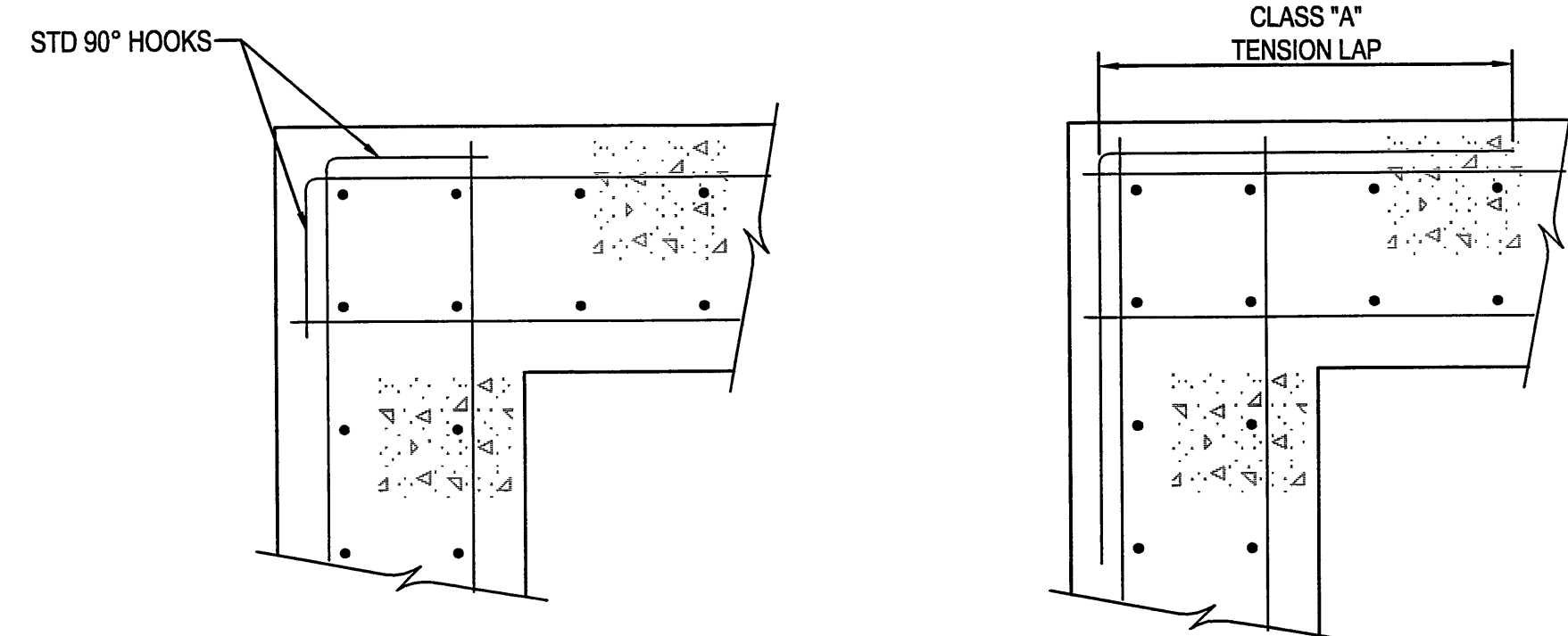
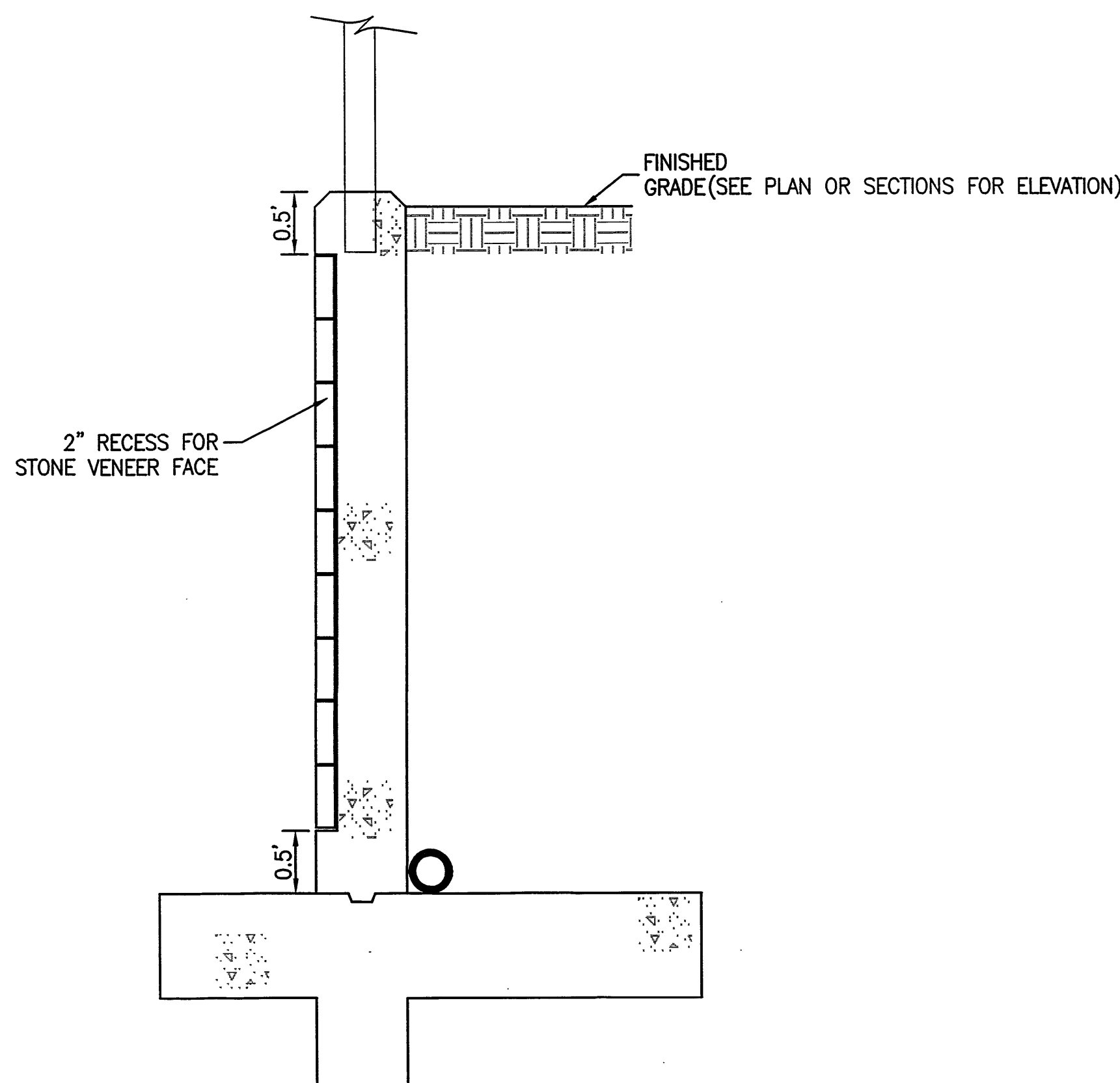
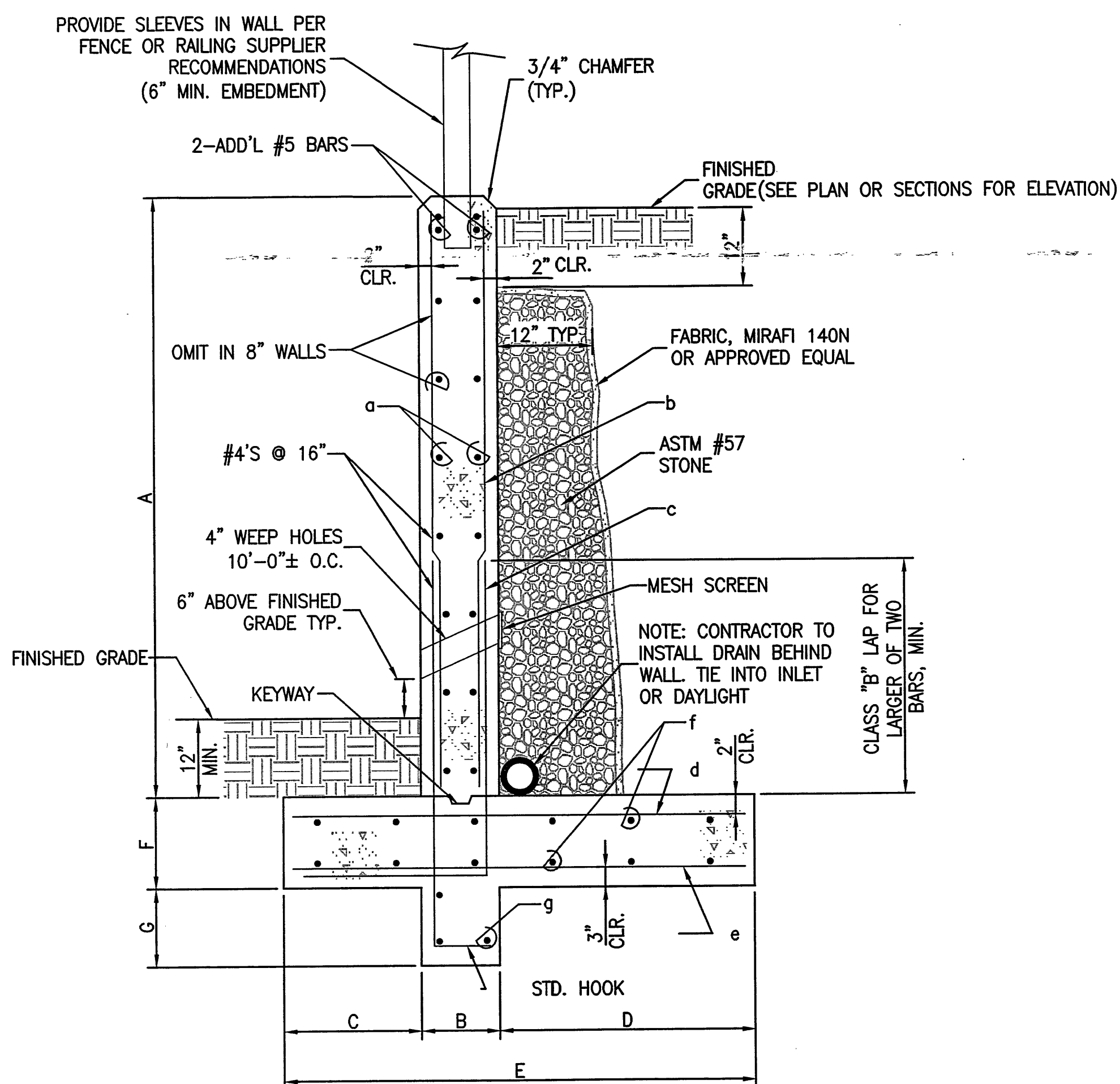
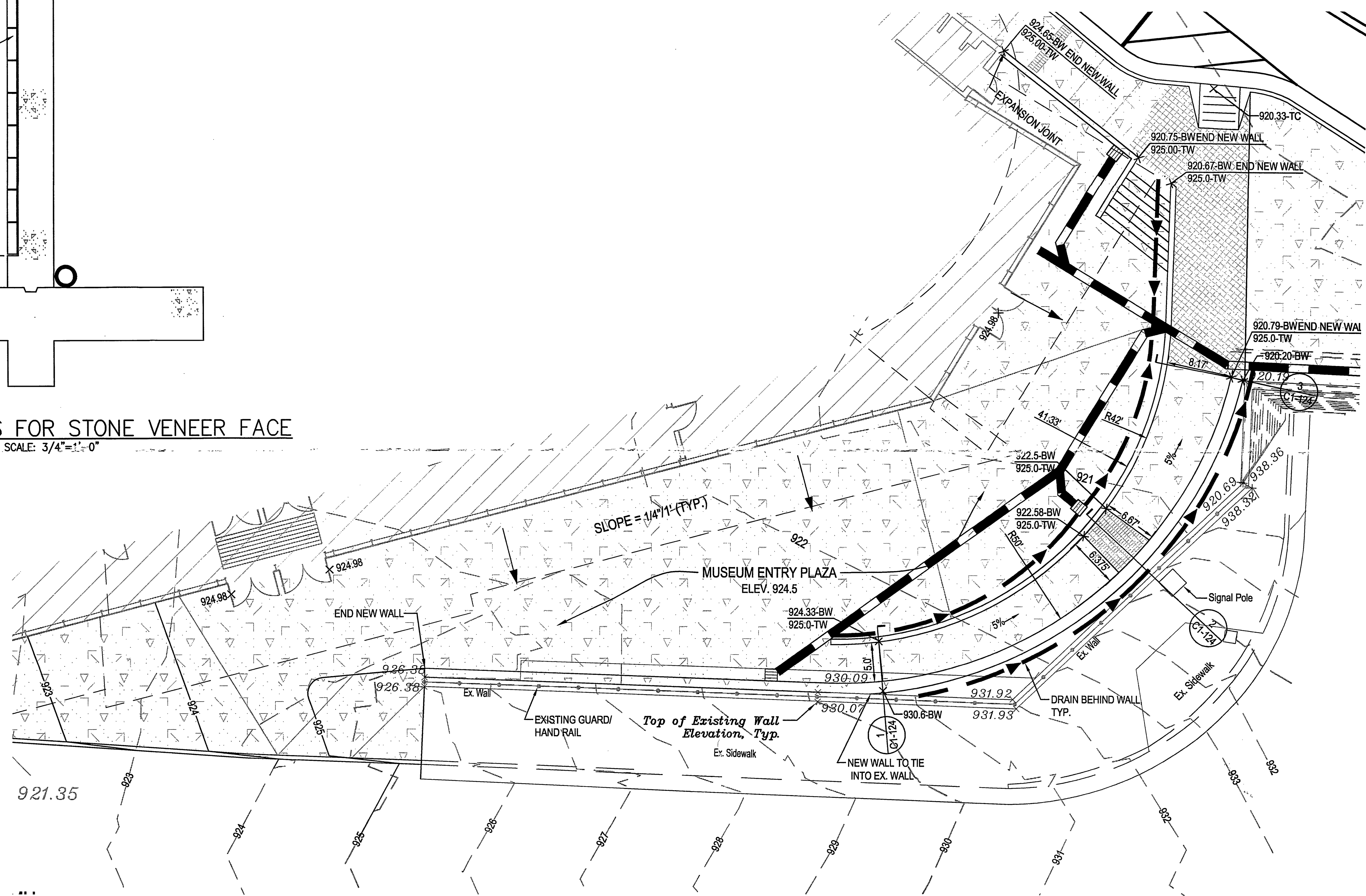
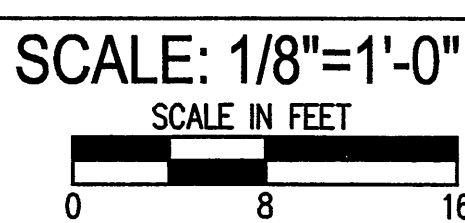
1. ALL REINFORCING SHALL BE DETAILED, FABRICATED, AND PLACED IN ACCORDANCE WITH ACI 315 (LATEST EDITION) UNLESS OTHERWISE NOTED. ALL SPLICES SHALL BE CLASS B TENSION WITH ALL APPLICABLE MODIFICATION FACTORS, UNLESS OTHERWISE NOTED. SPLICES NOT INDICATED MAY BE PROVIDED IF PROPERLY DETAILED ON SHOP DRAWINGS AND APPROVED BY THE ENGINEER. SPLICES OF HORIZONTAL BARS SHALL BE STAGGERED UNLESS OTHERWISE NOTED. EMBEDMENT LENGTHS SHALL BE EQUAL TO TENSION DEVELOPMENT LENGTHS UNLESS OTHERWISE NOTED. STANDARD HOOKS CONFORMING TO ACI 318 SHALL BE USED UNLESS OTHERWISE NOTED. DOWELS IN WALLS SHALL MATCH SIZE AND SPACING OF MAIN REINFORCING BARS UNLESS OTHERWISE NOTED. SPREAD REINFORCING AT OPENINGS AND SLEEVES UNLESS OTHERWISE DETAILED. DO NOT CUT REINFORCING BARS. CONCRETE PROTECTION FOR REINFORCEMENT SHALL BE AS INDICATED ON THE DRAWING AND SHALL BE INDICATED ON THE SHOP DRAWINGS. ALL SPLICE LENGTHS AND EMBEDMENT LENGTHS, BENDING DIAGRAM, AND ASSEMBLY DIAGRAMS SHALL BE INDICATED ON THE SHOP DRAWINGS. PROVIDE 2-#5 CONTINUOUS AT THE TOP OF ALL WALLS.
2. CONCRETE SHALL BE NORMAL WEIGHT, AIR ENTRAINED, AND SHALL HAVE A MINIMUM COMPRESSIVE STRENGTH OF 3,000 PSI AT 28 DAYS. THE MAXIMUM WATER-CEMENT RATIO SHALL NOT EXCEED 0.5. SLUMP AT POINT OF PLACEMENT SHALL BE NO MORE THAN 4 INCHES.
3. MAJOR CONSTRUCTION JOINTS ARE SHOWN. INTERMEDIATE JOINTS IN WALLS ARE NOT SHOWN UNLESS REQUIRED BY THE DESIGN. ALL CONSTRUCTION AND CONTROL JOINTS SHALL BE SHOWN ON THE SHOP DRAWINGS. CONSTRUCTION JOINTS MAY BE OMITTED OR RELOCATED IF PROPERLY DETAILED ON THE SHOP DRAWINGS AND APPROVED BY THE ENGINEER. JOINT LOCATIONS MUST BE APPROVED BY THE ENGINEER BEFORE SUBMITTING REINFORCING STEEL SHOP DRAWINGS.
4. THE UNIFORM OPERATION OF CONCRETE PLACEMENT SHALL NOT EXCEED 40 FEET IN ANY DIRECTION. THE DISTANCE BETWEEN EXPANSION JOINTS SHALL NOT EXCEED 80 FEET. AT LEAST 72 HOURS SHALL ELAPSE BEFORE CONCRETE IS PLACED ADJACENT TO PREVIOUSLY CAST CONCRETE. BACKFILLING ADJACENT TO CANTILEVER RETAINING WALLS SHALL NOT OCCUR UNTIL WALL CONCRETE HAS REACHED ITS 28-DAY DESIGN COMPRESSIVE STRENGTH.
5. CHAMFER ALL EXPOSED EDGES OF CONCRETE 3/4 INCH.
6. CONCRETE SHALL BE PLACED IN LAYERS NOT OVER 18 INCHES DEEP AND EACH LAYER SHALL BE COMPACTED BY MECHANICAL INTERNAL-VIBRATING EQUIPMENT SUPPLEMENTED BY HAND SPADING, RODDING AND TAMPING. VIBRATORS SHALL NOT BE INSERTED INTO LOWER COURSES THAT HAVE BEGUN TO SET. CONCRETE SHALL BE PLACED BY CHUTES OR ELEPHANT TRUNKS WHEN THE VERTICAL DROP EXCEEDS 4'-0".
7. CONTRACTOR SHALL NOTIFY ENGINEER 48 HOURS PRIOR TO PLACING ANY CONCRETE. SO THAT REINFORCEMENT, SLEEVES, PIPES, INSERTS, HANGERS, ETC., CAN BE INSPECTED FOR CONFORMANCE WITH PLANS AND SPECIFICATIONS.

RETAINING WALL SCHEDULE FOR LEVEL BACKFILL W/PARKING

DIMENSIONS							REINFORCING						
A	B	C	D	E	F	G	a	b	c	d	e	f	g
0'-4"	0'-8"	0'-8"	2'-0"	3'-2"	1'-0"	1'-0"	#4 @ 12"	N/A	#4 @ 18"	#4 @ 18"	#4 @ 18"	#4 @ 12"	3-#4 BARS
4'-6"	0'-8"	0'-8"	3'-4"	4'-9"	1'-0"	1'-2"	#4 @ 12"	N/A	#5 @ 12"	#5 @ 12"	#4 @ 12"	#4 @ 12"	3-#4 BARS
6'-8"	0'-10"	1'-0"	6'-8"	6'-6"	1'-2"	1'-10"	#4 @ 12"	N/A	#6 @ 6"	#5 @ 12"	#4 @ 12"	#4 @ 12"	4-#4 BARS
8'-10"	1'-0"	1'-8"	8'-8"	1'-0"	1'-6"	2'-0"	#5 @ 12"	#6 @ 12"	#6 @ 6"	#6 @ 12"	#4 @ 12"	#5 @ 12"	4-#4 BARS
10'-12"	1'-0"	2'-0"	1'-0"	1'-0"	1'-8"	2'-0"	#5 @ 12"	#6 @ 6"	#7 @ 6"	#5 @ 12"	#6 @ 12"	#6 @ 12"	4-#4 BARS
12'-14"	1'-3"	2'-0"	13'-9"	17'-0"	2'-0"	2'-0"	#5 @ 12"	#6 @ 6"	#6 @ 6"	#6 @ 6"	#5 @ 12"	#7 @ 12"	4-#5 BARS
14'-16"	1'-5"	2'-0"	15'-6"	19'-9"	2'-0"	2'-0"	#6 @ 12"	#6 @ 6"	#8 @ 6"	#7 @ 6"	#5 @ 12"	#7 @ 12"	4-#6 BARS

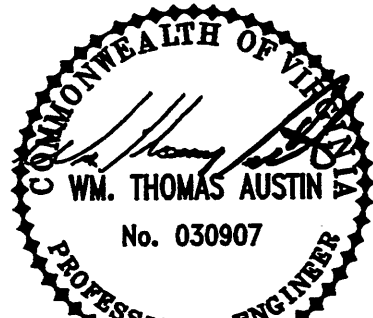
NOTES:

1. THE PREPARED PIPES SHALL BE PLACED AT A MINIMUM GRADE OF 1 PERCENT AND SHALL HAVE A FREE OUTLET. THE PREPARED PIPES SHALL BE ON THE BOTTOM.
2. REINFORCING STEEL SHALL HAVE A MINIMUM OF 2" CLEARANCE, UNLESS OTHERWISE NOTED.

TYPICAL FOOTING STEP DETAIL
NOT TO SCALETYP. EXPANSION JOINT DETAIL
NOT TO SCALETYP. CONSTRUCTION JOINT DETAIL
NOT TO SCALETYP. WALL END DETAIL
NOT TO SCALETYP. DOUBLE CURTAIN CORNER DETAIL
NOT TO SCALESECTION - RECESS FOR STONE VENEER FACE
SCALE: 3/4"=1'-0"TYPICAL RETAINING WALL SECTION
SCALE: 3/4"=1'-0"ENLARGED PLAZA DETAIL
SCALE: 1/8"=1'-0"

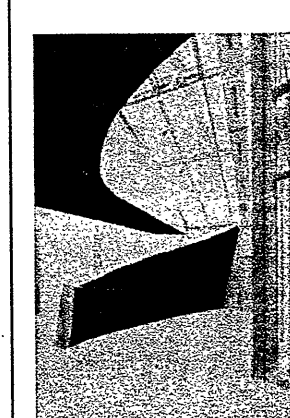
Landscape Whitell Group 315 King George Avenue Roanoke, VA 24016 540.982.0040 gene@whitellgroup.com	Acoustics, AV, Security, Communications Newcomb & Boyd 303 Peachtree Center Ave. NE, Suite 525 Atlanta, GA 30305-1277 404.720.8400 terguson@newcomb-boyd.com	Electrical Kocher, Schira & Goharzi Consulting Engineers 1111 N. Jackson St., Suite 121 Glenade, CA 91026-4317 618.240.5630 hdahl@ksgeng.com	Structural Desimone Consulting Engineers PLLC 160 Sansome St., Suite 1600 San Francisco, CA 94104 415.398.5740 cndrads@de-simone.com	Associate Architect Rodriguez Ripley Maddux Moley Architects 28 Church Avenue Roanoke, VA 24011 540.344.1212 goupka@mmm.net	Civil Mattern & Craig 701 First St. S.W. Roanoke, VA 24016 540.345.9342 wtaustin@matternandcraig.com
Specifications Webb Design 7180 West Surrey Ave. Peoria, AZ 85381 623.412.2725 paulsimonson@msn.com	Food Service Webb Design 130 S. Prospekt Ave. Tustin, CA 92780 617.354.1880 jwebb@webbdesignonline.com	Lighting LAM Partners 84 Sherman Street Cambridge, MA 02140 617.354.4502 jenniferp@lampartners.com	Mechanical / Plumbing IBE Consulting Engineers, Inc. 14130 Riverside Drive, Suite 201 Sherman Oaks, CA 91423 818.377.8220 john.gautrey@ibecon.net	Stamp REGISTERED PROFESSIONAL ENGINEER IN THE STATE OF VIRGINIA W. THOMAS AUSTIN No. 039907	These drawings are the property and copyright of: randall stout architects, inc. 12964 Washington Blvd. Los Angeles, CA 90066 310.827.6876 telephone 310.827.6879 facsimile rnpurphy@stoutarc.com

STAMP



THESE DRAWINGS ARE THE PROPERTY AND COPYRIGHT OF:

randall stout architects, inc.


12964 Washington Blvd.
Los Angeles, CA 90066
310.827.6876 telephone
310.827.6879 facsimile
rnpurphy@stoutarc.com

PROJECT

Art Museum of Western Virginia

100 Salem Avenue SE, Roanoke, Virginia 24011

KEY PLAN

NO.	ISSUE	DATE	NO.	ISSUE	DATE
1	ADDENDUM #1 (TO 60% DD)	10/28/04			
2	100% DD	12/21/04			
3	SITE WORK/FOUNDATIONS	07/06/05			
4	GMP ISSUE	07/28/05			
5	GMP-RV PERMIT APPLICATION	11/18/05			

DRAWING TITLE

PLAZA -
DETAILS AND SECTIONS

DATE: 08/01/04

DRAWN BY: CZV

PROJECT NO: 0104

REVIEWED BY: WTA

SCALE: SCALE: AS NOTED

DRAWING NUMBER:

C1-1.24