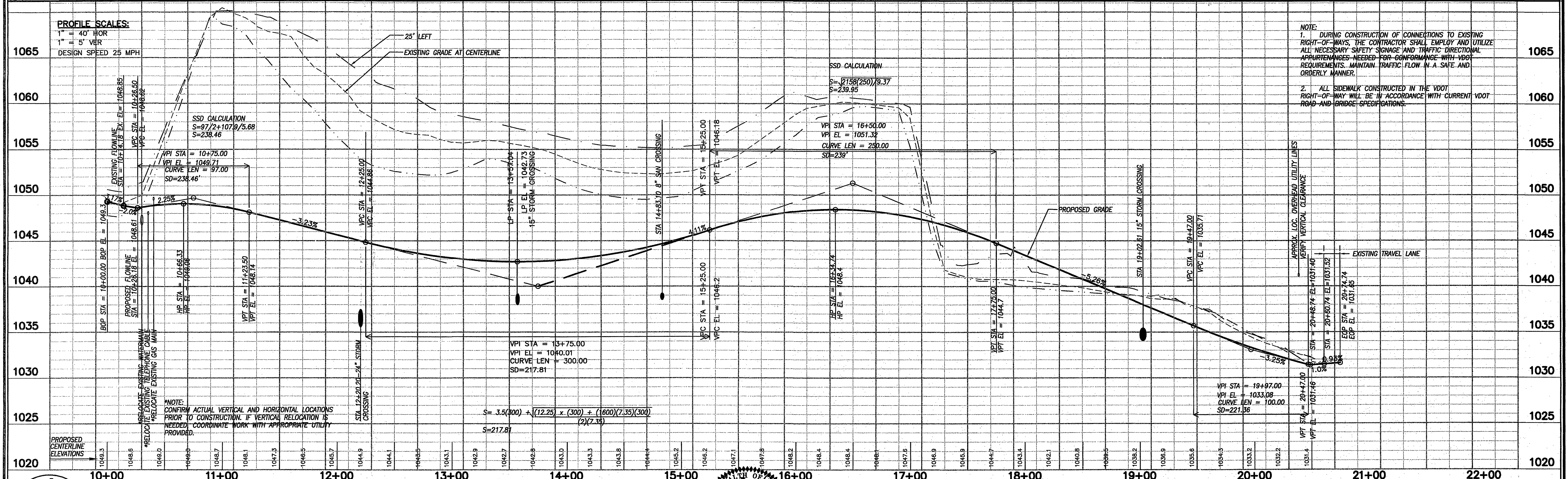
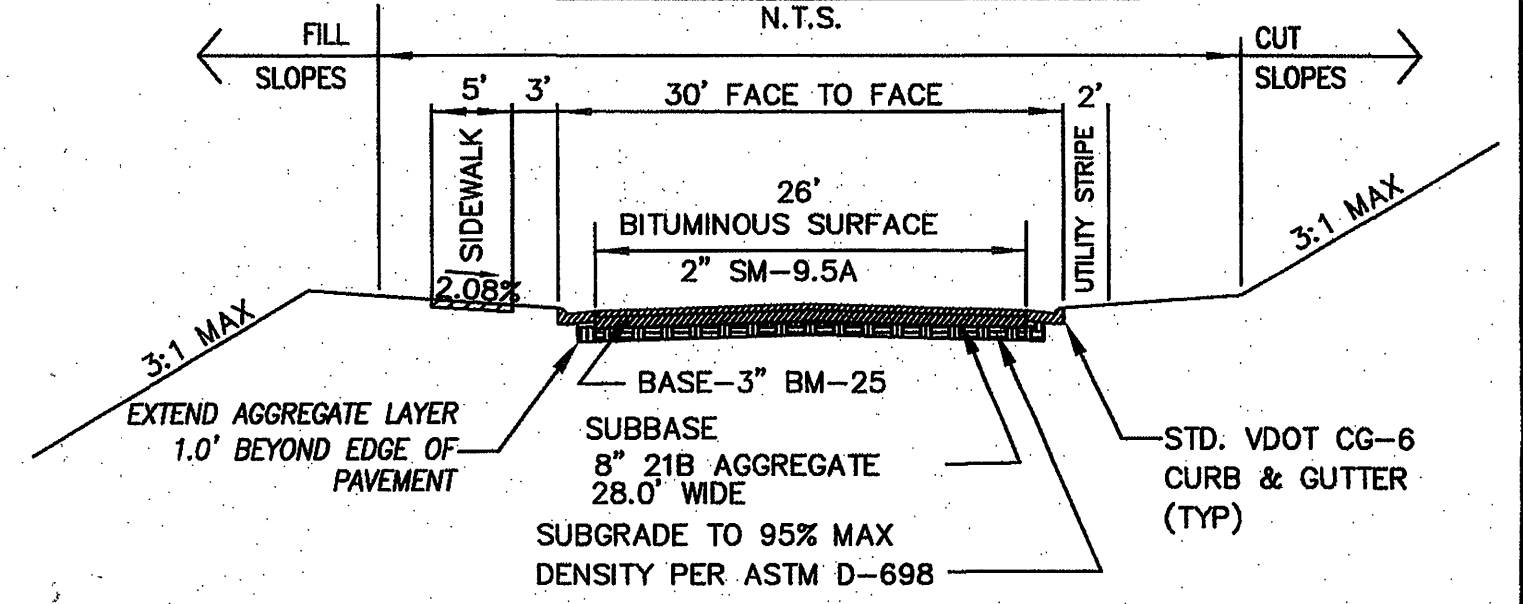


HORIZONTAL CURVE SSD CURVES C1 & C2
 $R=216-13/2=209.5'$
 $HSO=30-31/2=23.5$
 $S=209.5/28.65\cos-1\ 209.5-23.5/209.5$
 $S=200.34$

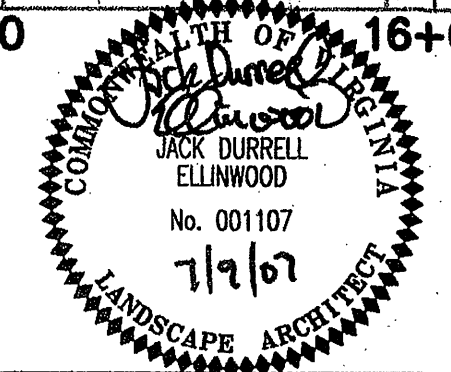
CENTERLINE CURVE DATA		
C1	C2	C3
$D_c=26'46''07''$	$D_c=26'46''07''$	$D_c=35'16''46''$
$T=269.74'$	$T=137.68'$	$T=63.31'$
$R=216.00'$	$R=216.00'$	$R=165.00'$
$L=386.89'$	$L=245.14'$	$L=120.90'$
$C=337.89'$	$C=232.20'$	$C=118.21'$

**BLUE HILLS VILLAGE DRIVE (PUBLIC)
 TYPICAL SECTION**



NOTE:
 1. DURING CONSTRUCTION OF CONNECTIONS TO EXISTING RIGHT-OF-WAYS, THE CONTRACTOR SHALL EMPLOY AND UTILIZE ALL NECESSARY SAFETY SIGNAGE AND TRAFFIC DIRECTIONAL APPOINTMENTS NEEDED FOR CONFORMANCE WITH VDOT REQUIREMENTS. MAINTAIN TRAFFIC FLOW IN A SAFE AND ORDERLY MANNER.
 2. ALL SIDEWALK CONSTRUCTED IN THE VDOT RIGHT-OF-WAY WILL BE IN ACCORDANCE WITH CURRENT VDOT ROAD AND BRIDGE SPECIFICATIONS.

ENGINEERING CONCEPTS, INC.
 20 S. ROANOKE ST., PO BOX 619
 PINCASTLE, VIRGINIA 24090
 540.473.1253 FAX: 540.473.1254



No.	Revision	By	Appd.	Date	Drawn	DRB
1	CITY, COUNTY & VDOT NOV. COMMENTS	DRB	JDE	03/22/07	Designed	DRB
2	CITY, COUNTY & VDOT APRIL COMMENTS	DRB	JDE	05/24/07	Checked	JDE
3	CITY COMMENTS, 6/18/07	DRB	JDE	06/18/07	Approved	JDE
4	CITY COMMENTS, 7/9/07	DRB	JDE	07/12/07	Approved	JDE

**BLUE HILLS VILLAGE
 PROFILE BLUE HILLS VILLAGE DRIVE**
**BLUE HILLS DRIVE & U.S. ROUTE 460
 ROANOKE, VIRGINIA**

AS SHOWN
 OCT. 20, 2006
 PROJECT: 06067
 8