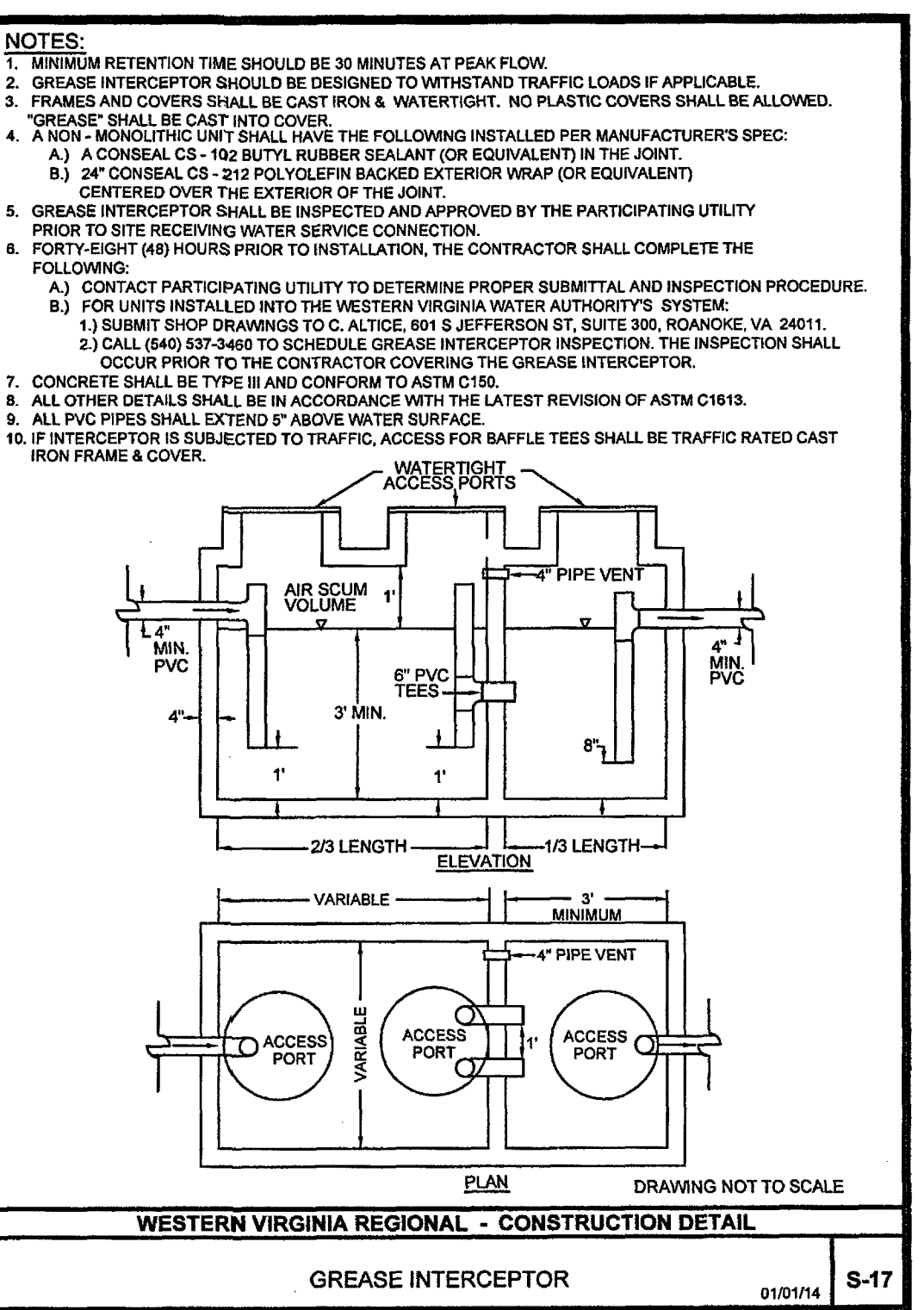
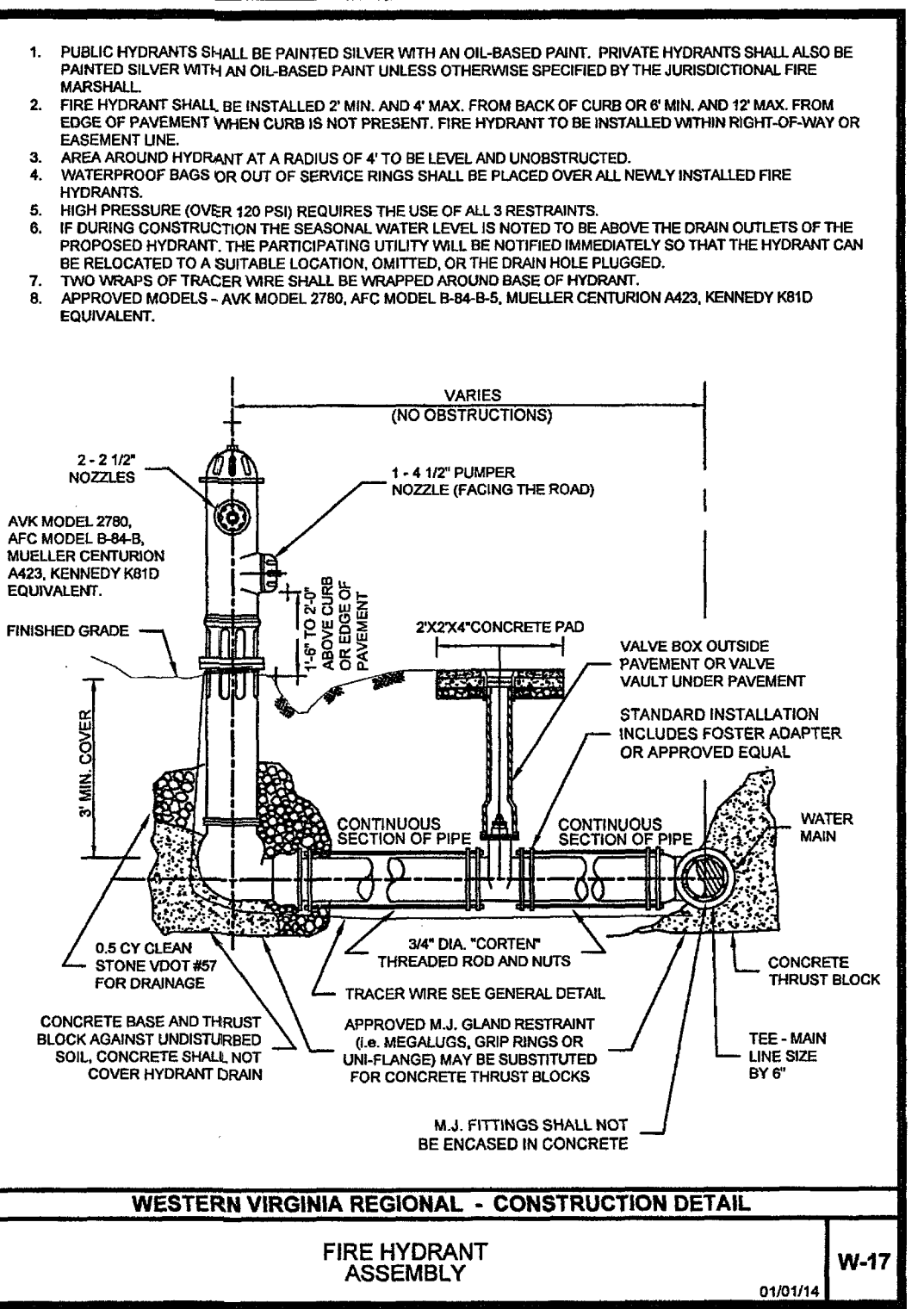
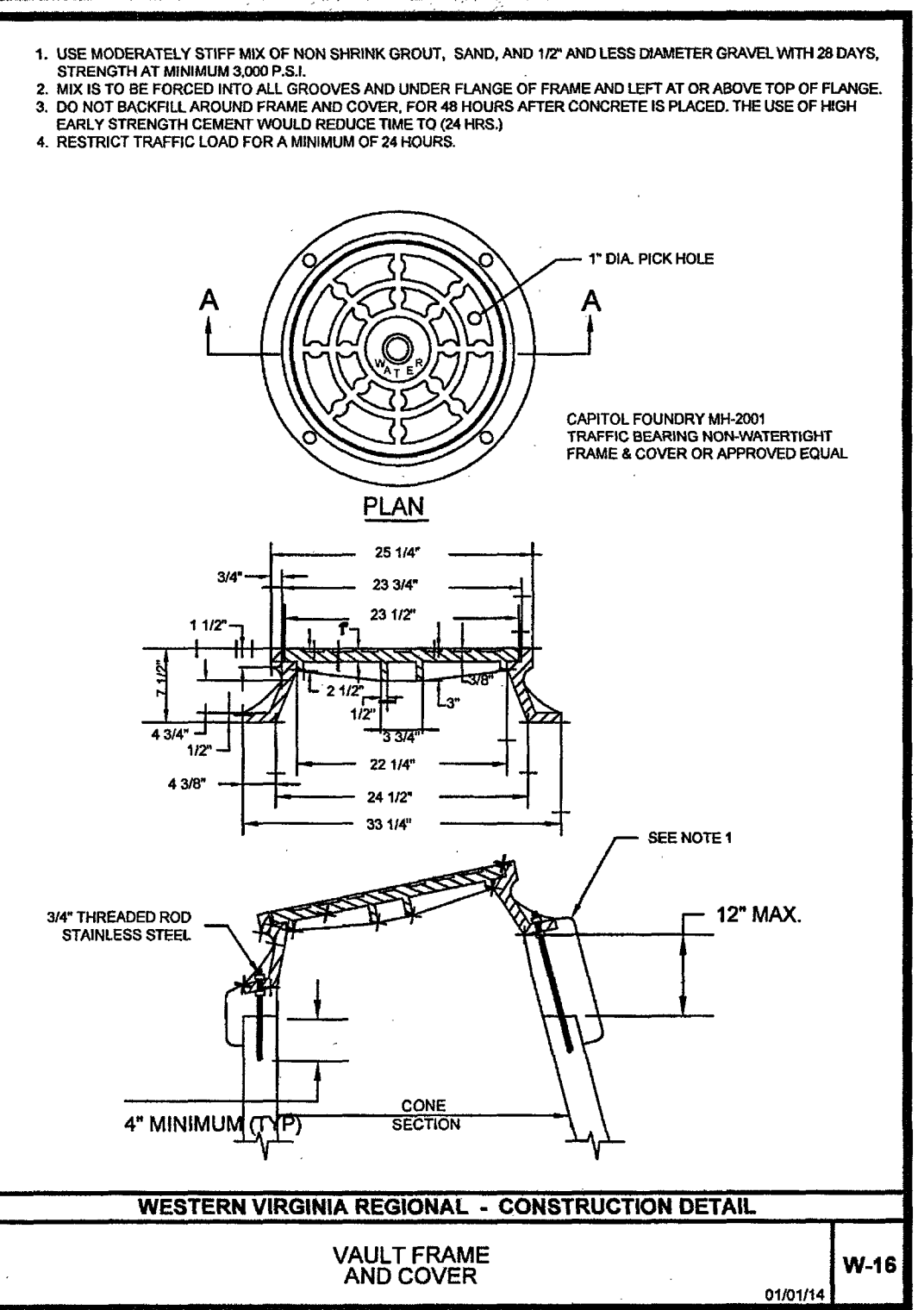
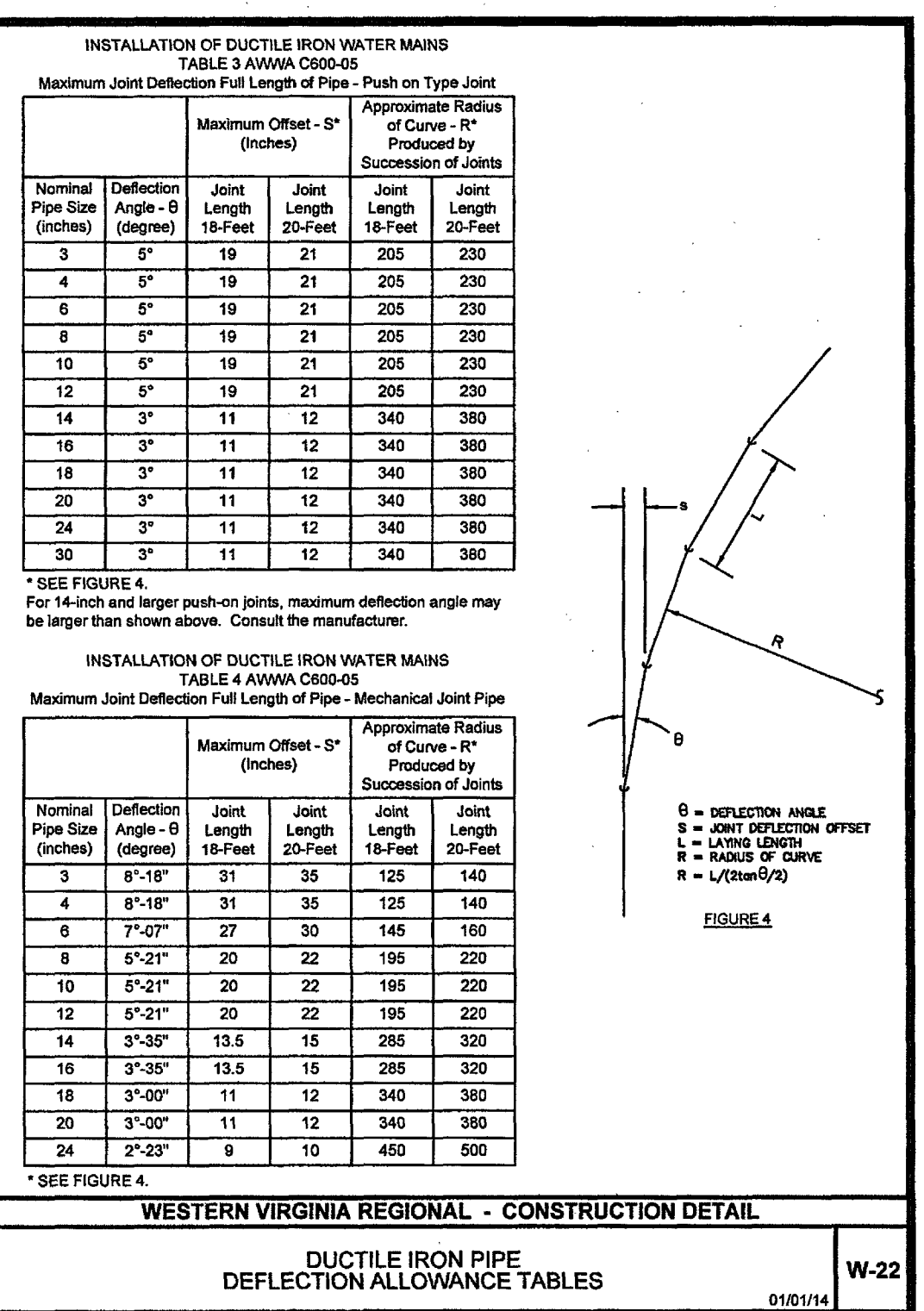
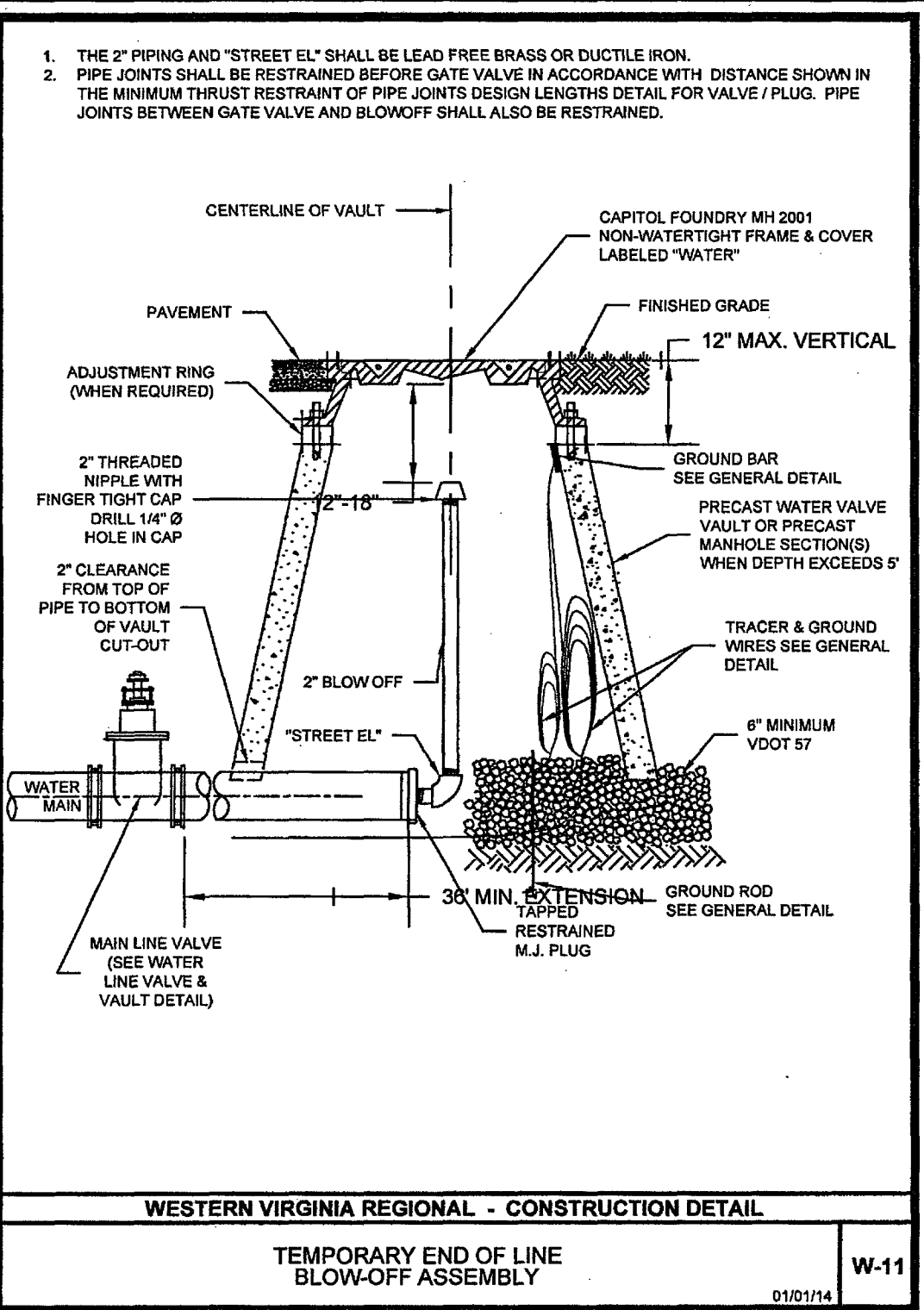
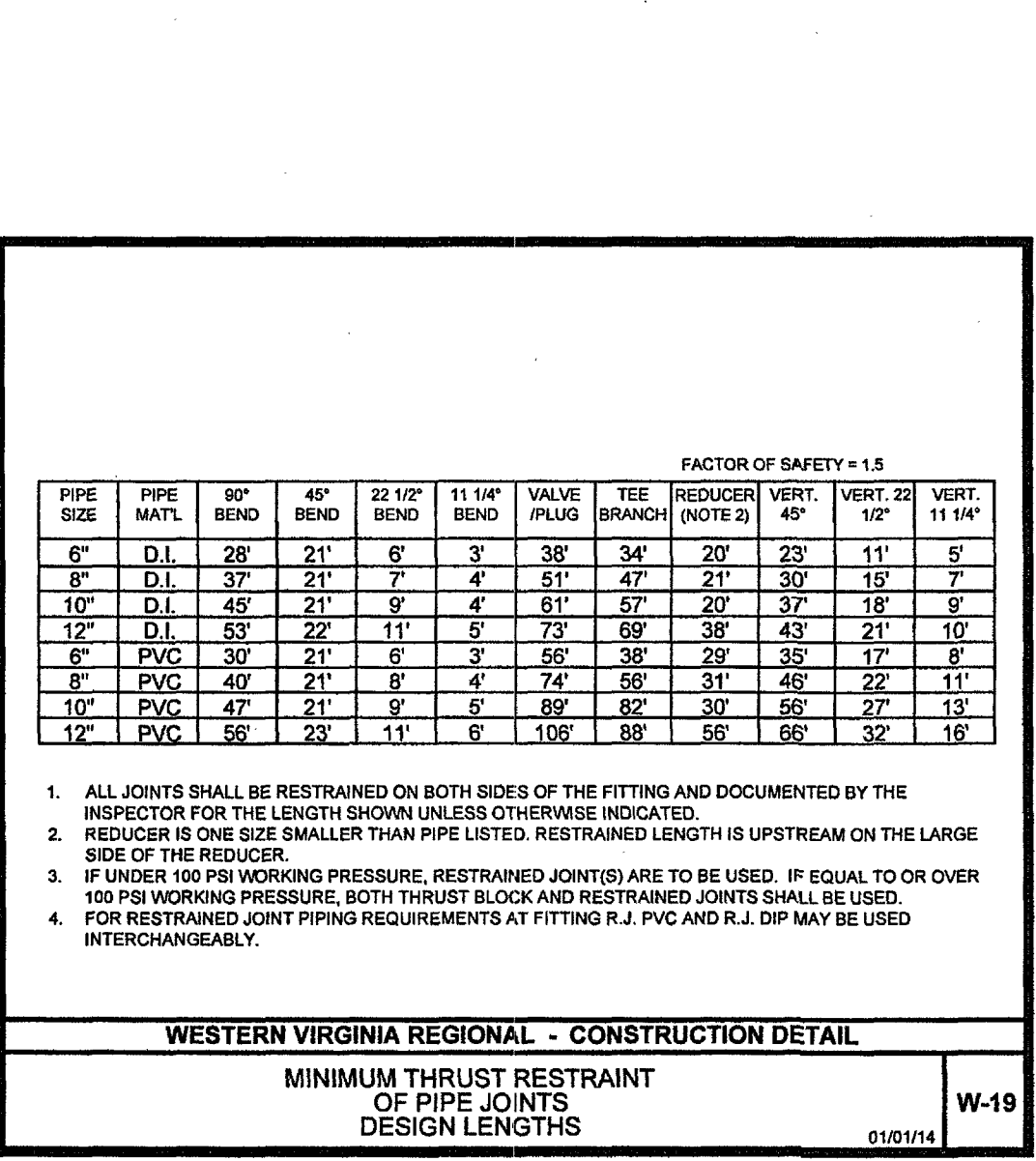
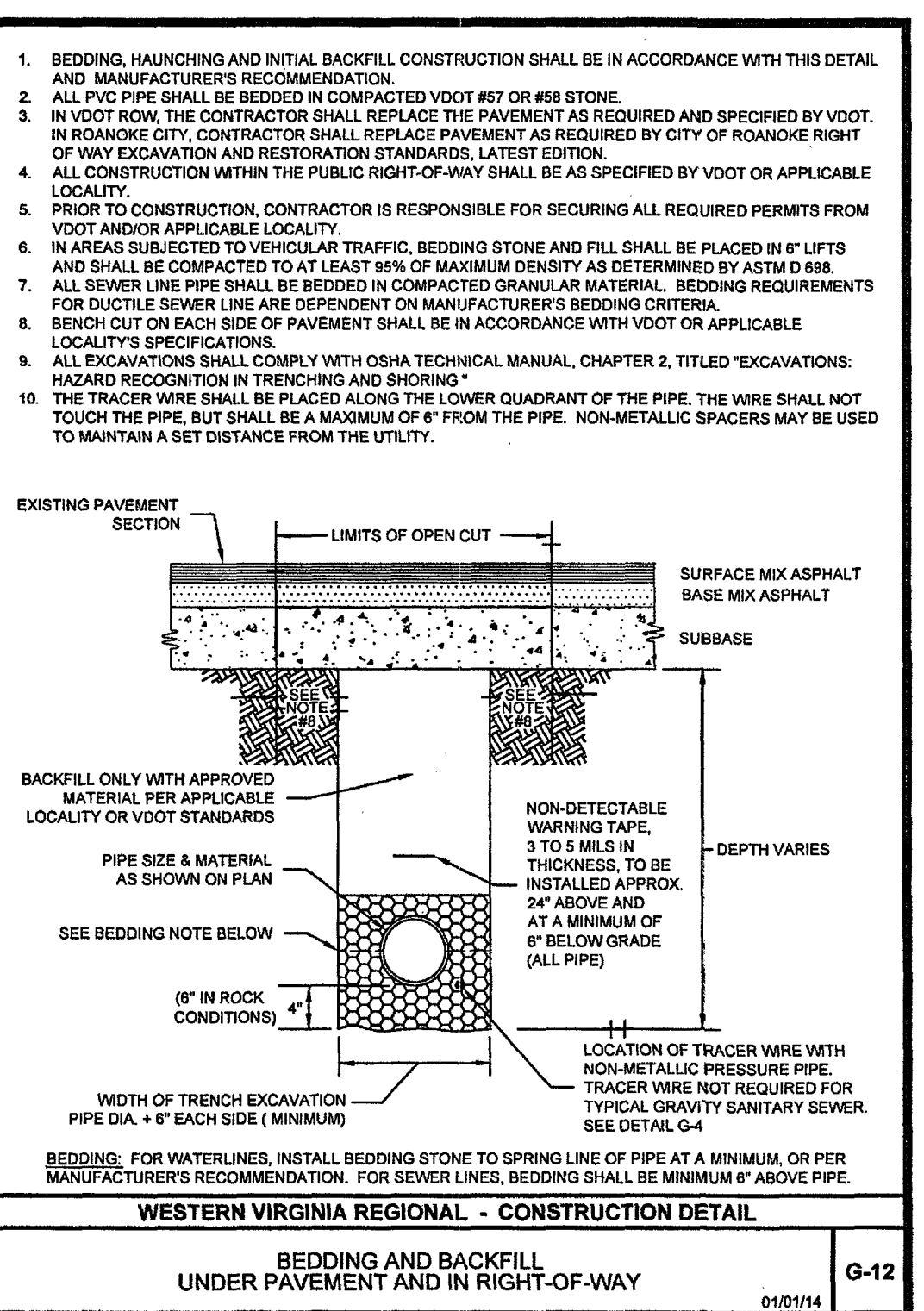
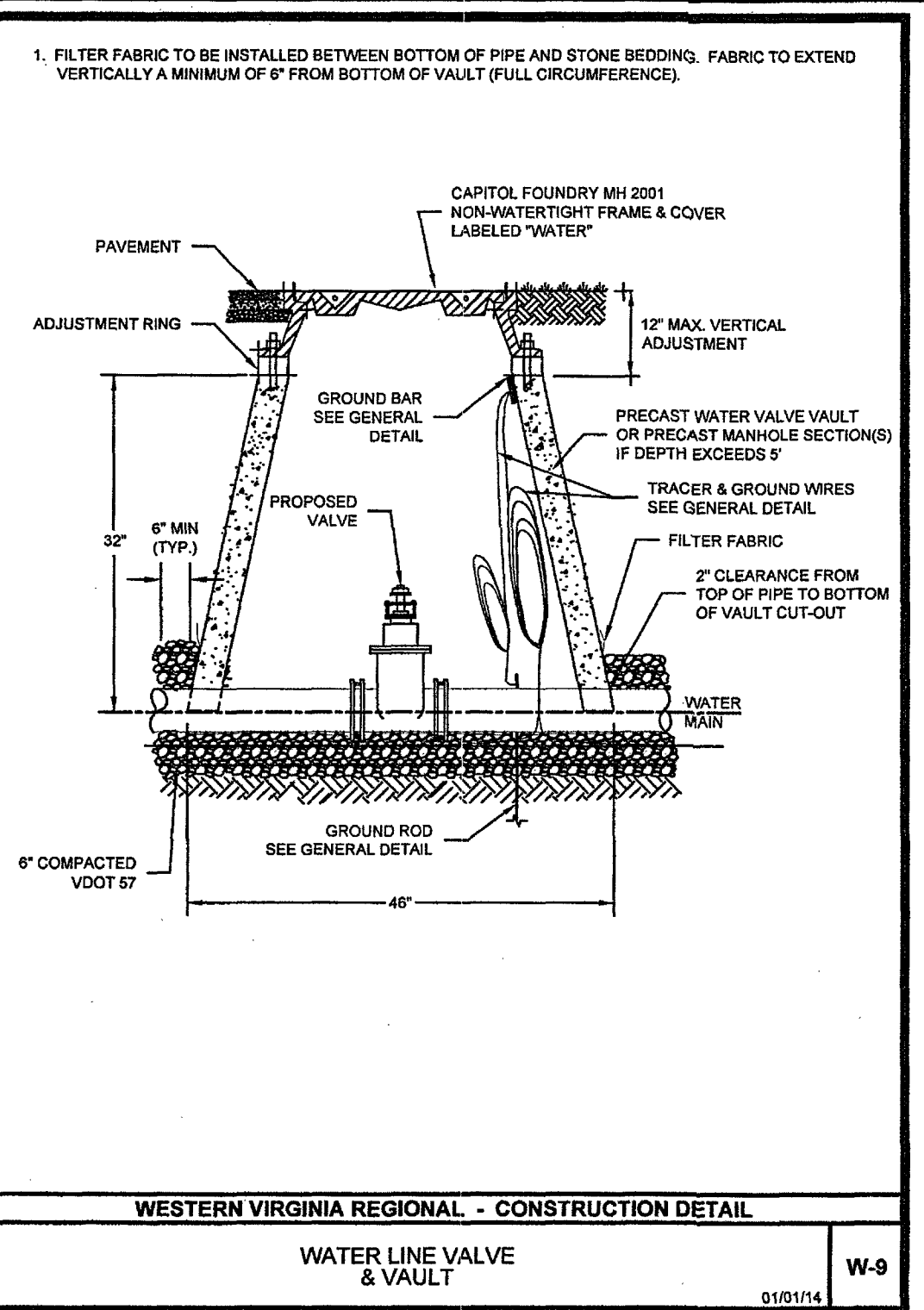
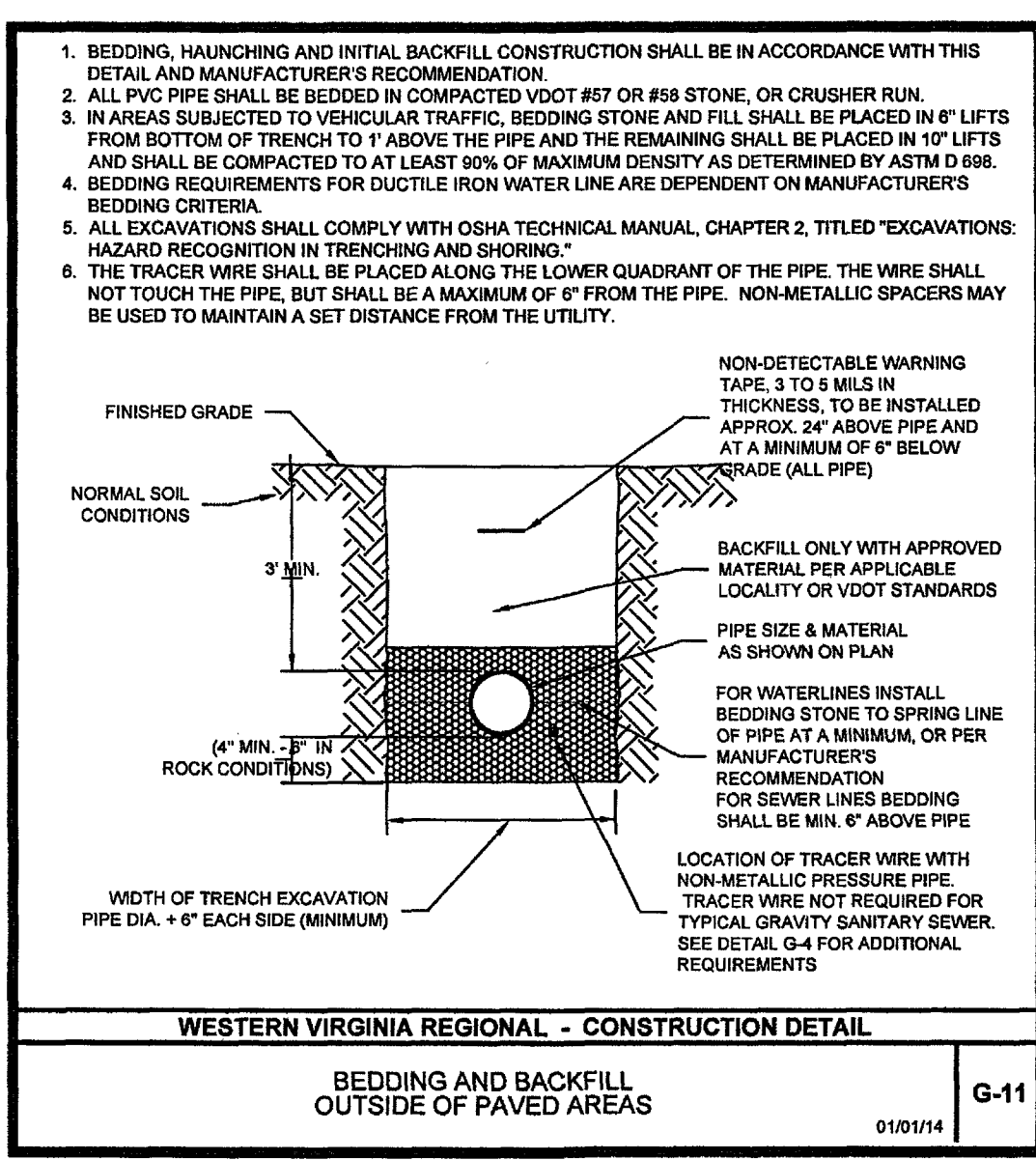
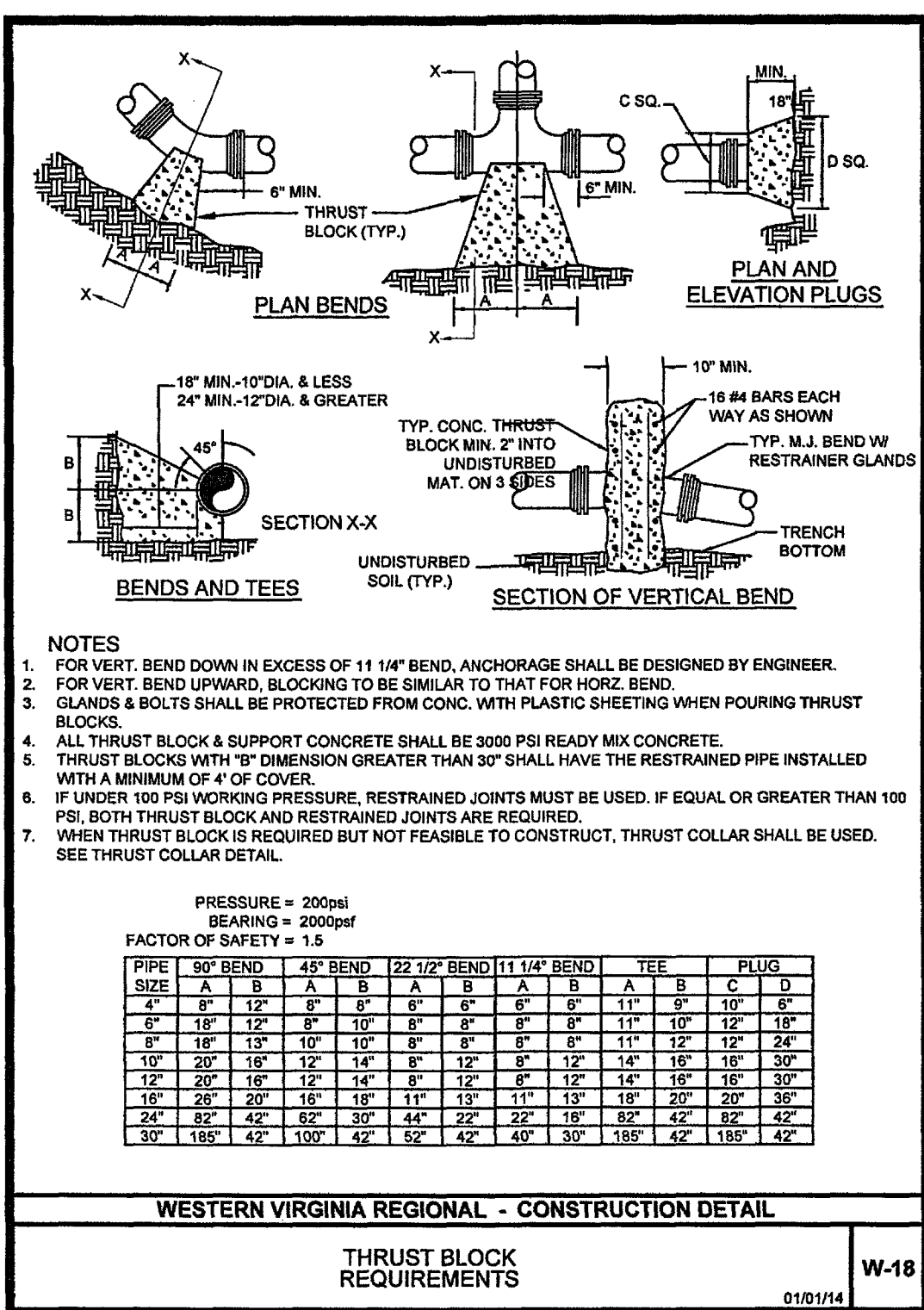
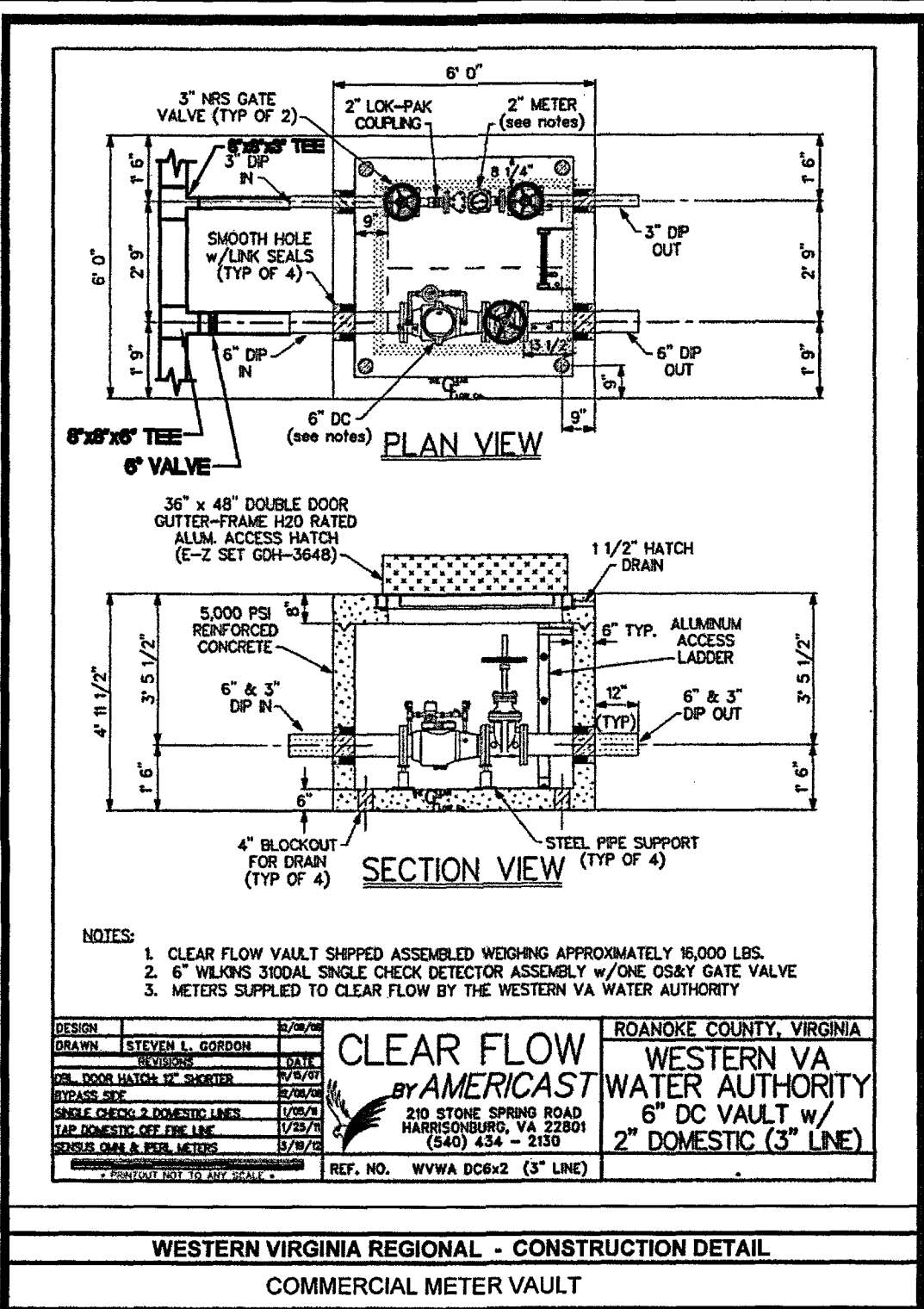


Drawing File: P:\2011\1020 - Bonrack Baptist Church - Site Water Plan\Water Plan\DWG\1020 - Bonrack Baptist Church - Site Water Plan without Large Paving Lot.dwg
Date: 10-17-2014 4:40:00pm



DATE: JUNE 16, 2014

REVISIONS
△
△
△
△
△

HUGHES ASSOCIATES ARCHITECTS & ENGINEERS
Architecture • Engineering • Consulting

656 ELM AVENUE, S.W.
P.O. BOX 1034
ROANOKE, VIRGINIA 24005-1034
TEL (540) 342-4002
FAX (540) 342-2060
www.HughesArchitects.com

ALTERATIONS & ADDITIONS FOR
BONSAK BAPTIST CHURCH
Roanoke County, VA

DRAWN BY: WMM
CHECKED BY: mla

WESTERN VIRGINIA WATER AUTHORITY DETAILS

COMMONWEALTH OF VIRGINIA
8/16/14
MARK JOHN AYLES
Lic. No. 034160
PROFESSIONAL ENGINEER

COMMISSION No.
11020.002

SHEET
SP-18

APPROVED
COPYRIGHT 2014
HUGHES ASSOCIATES ARCHITECTS & ENGINEERS
A PROFESSIONAL CORPORATION