

DEVELOPMENT PLANS FOR
LOT 13, SECTION II, ASHLEY PLANTATION
SHOWING A SANITARY SEWER RELOCATION
BOTETOURT COUNTY, VIRGINIA

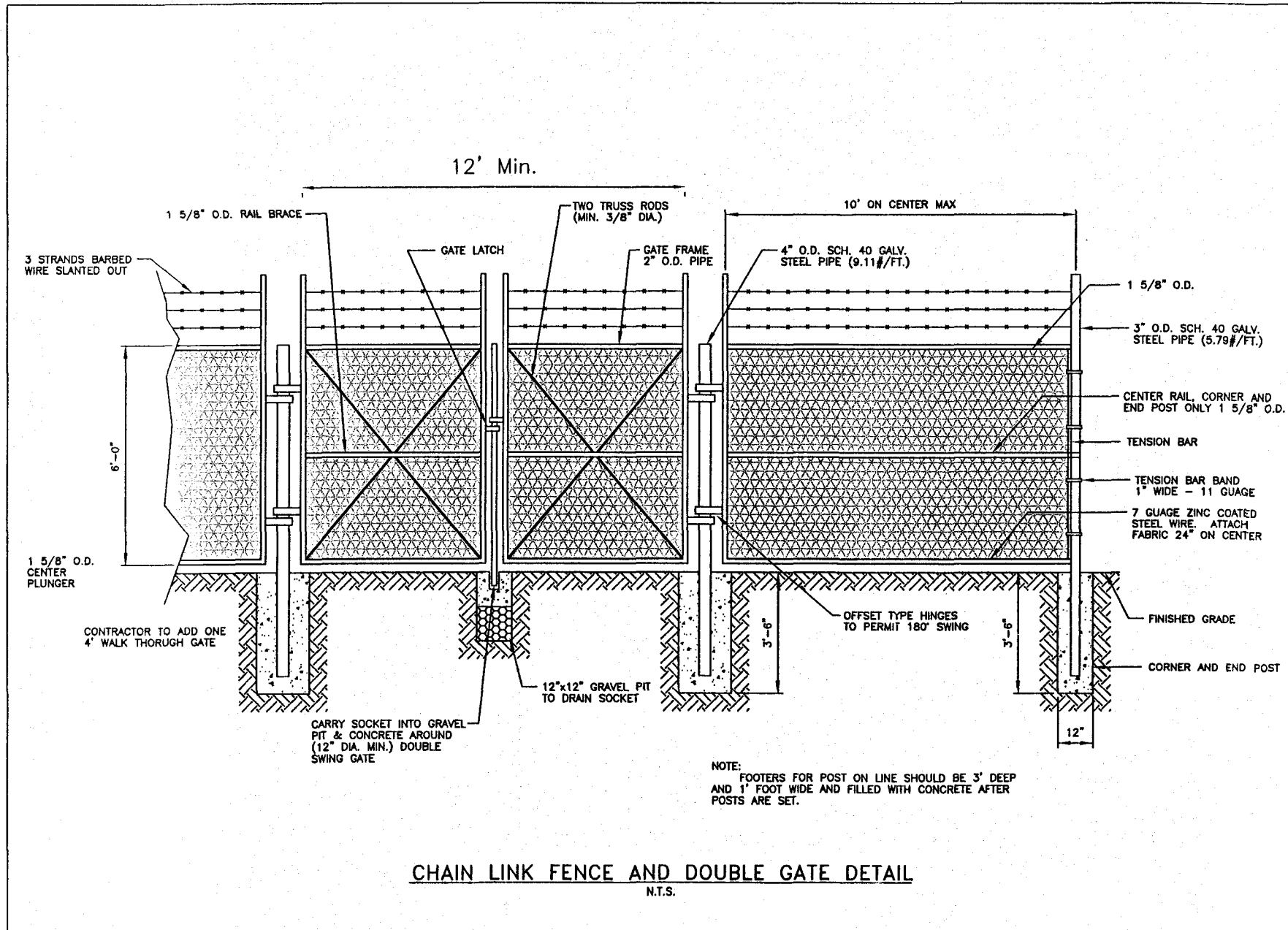
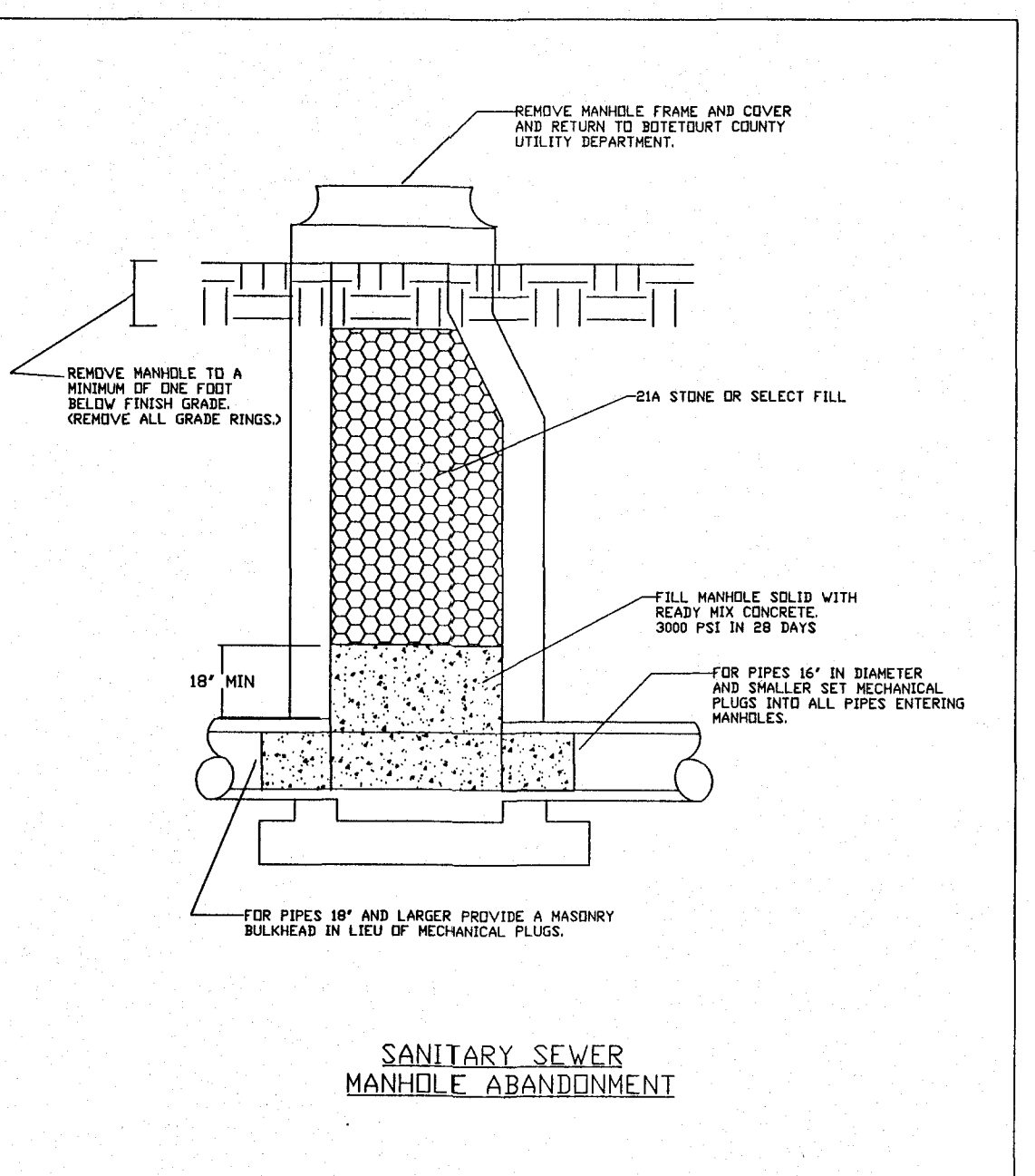
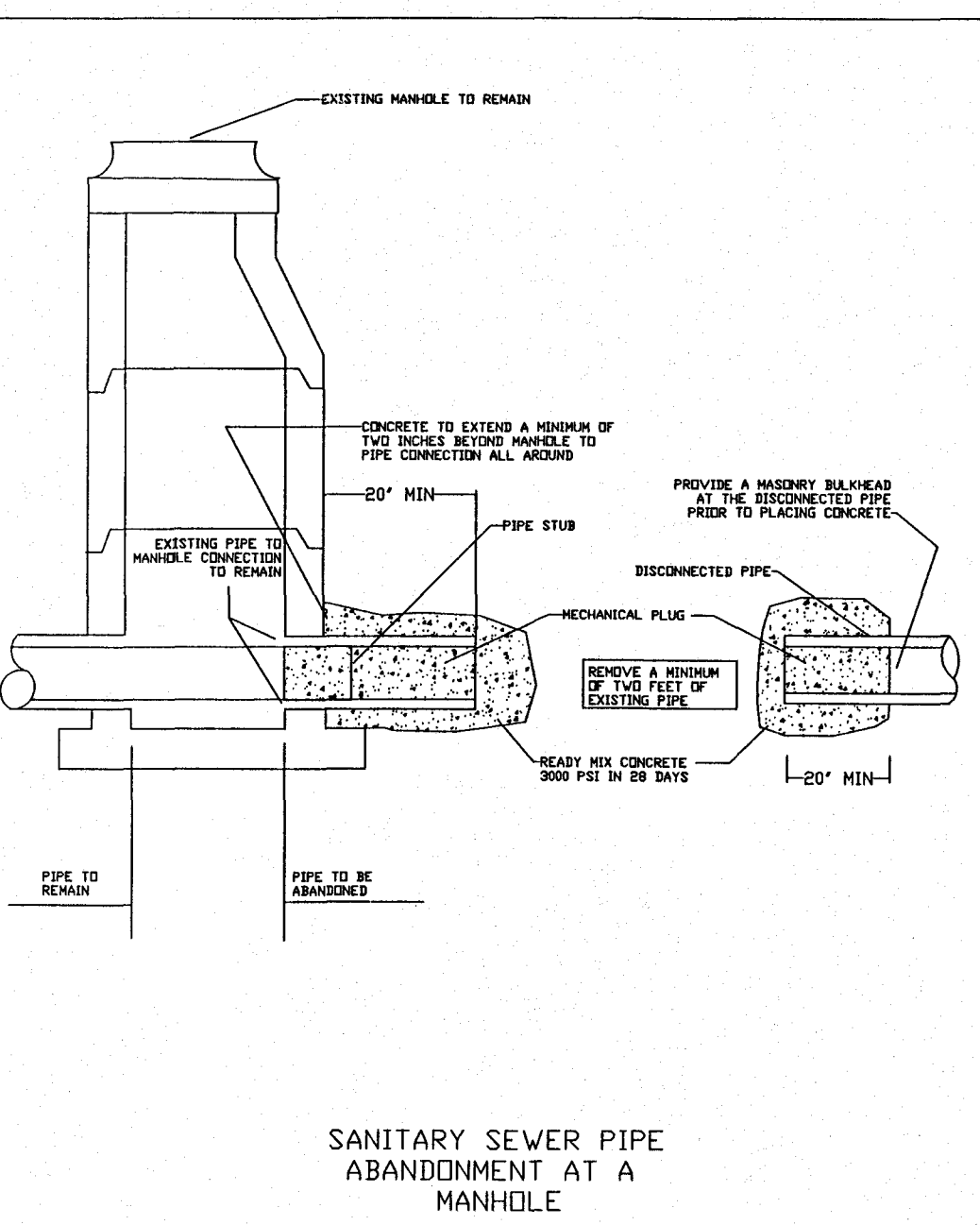
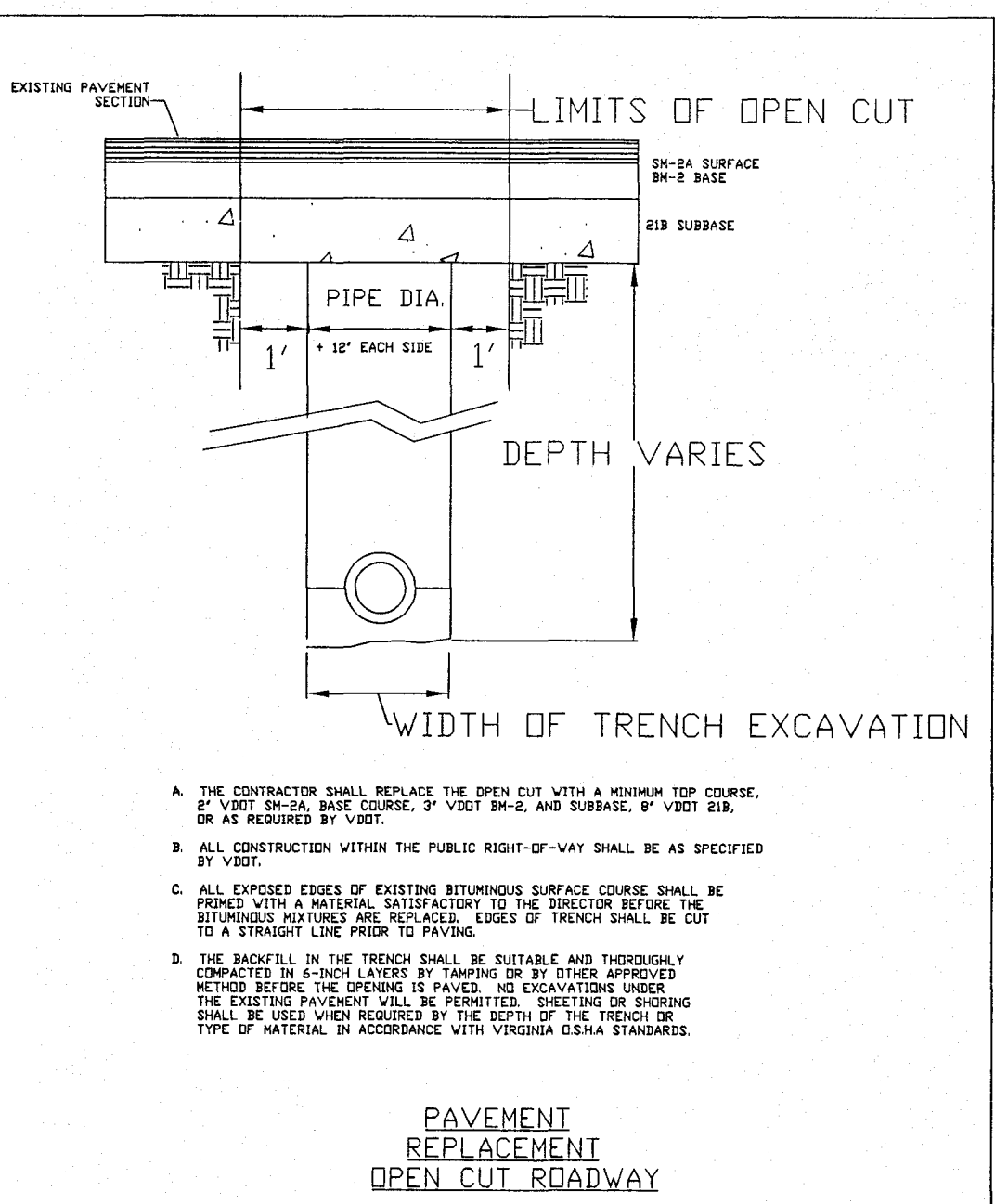
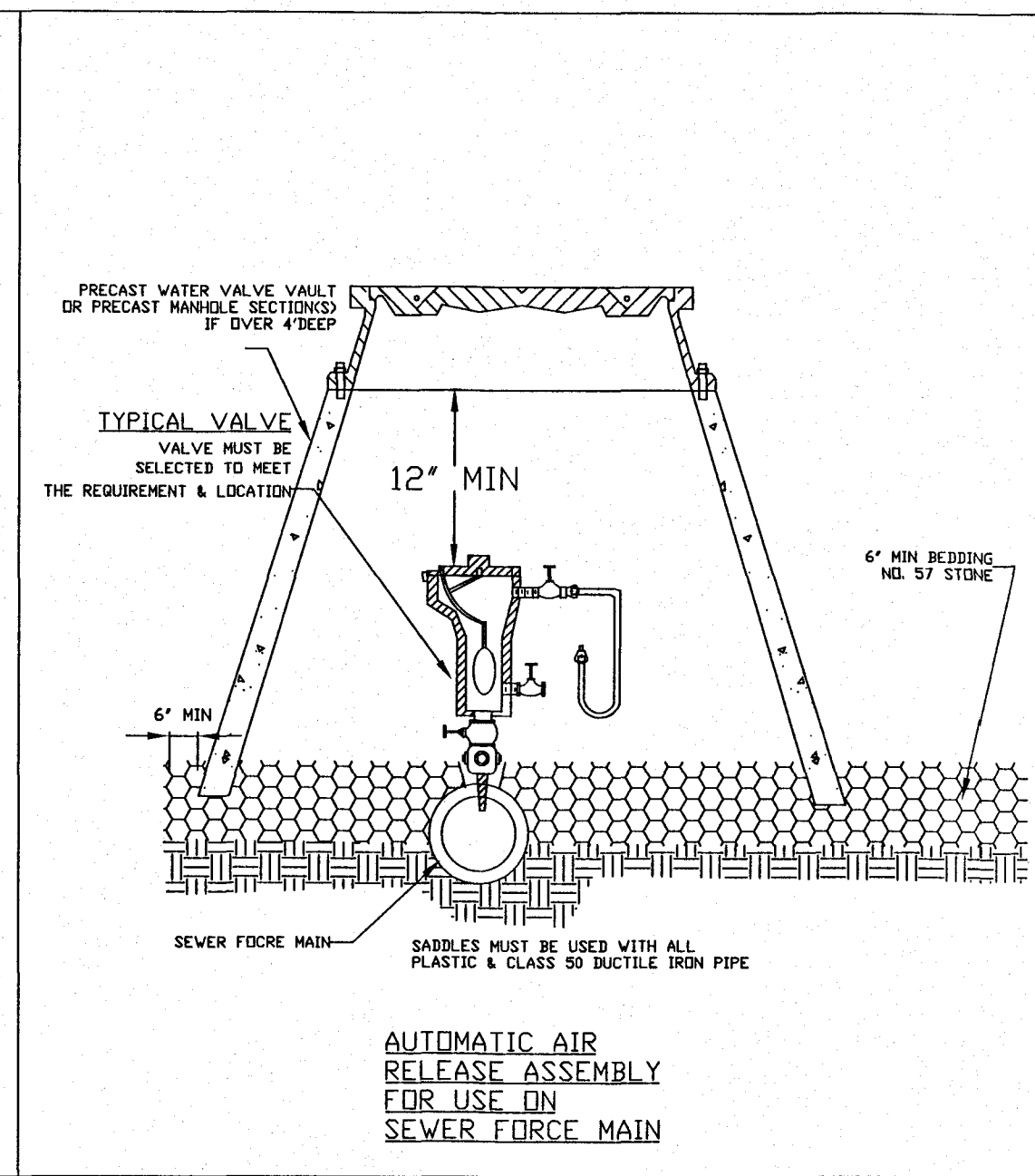
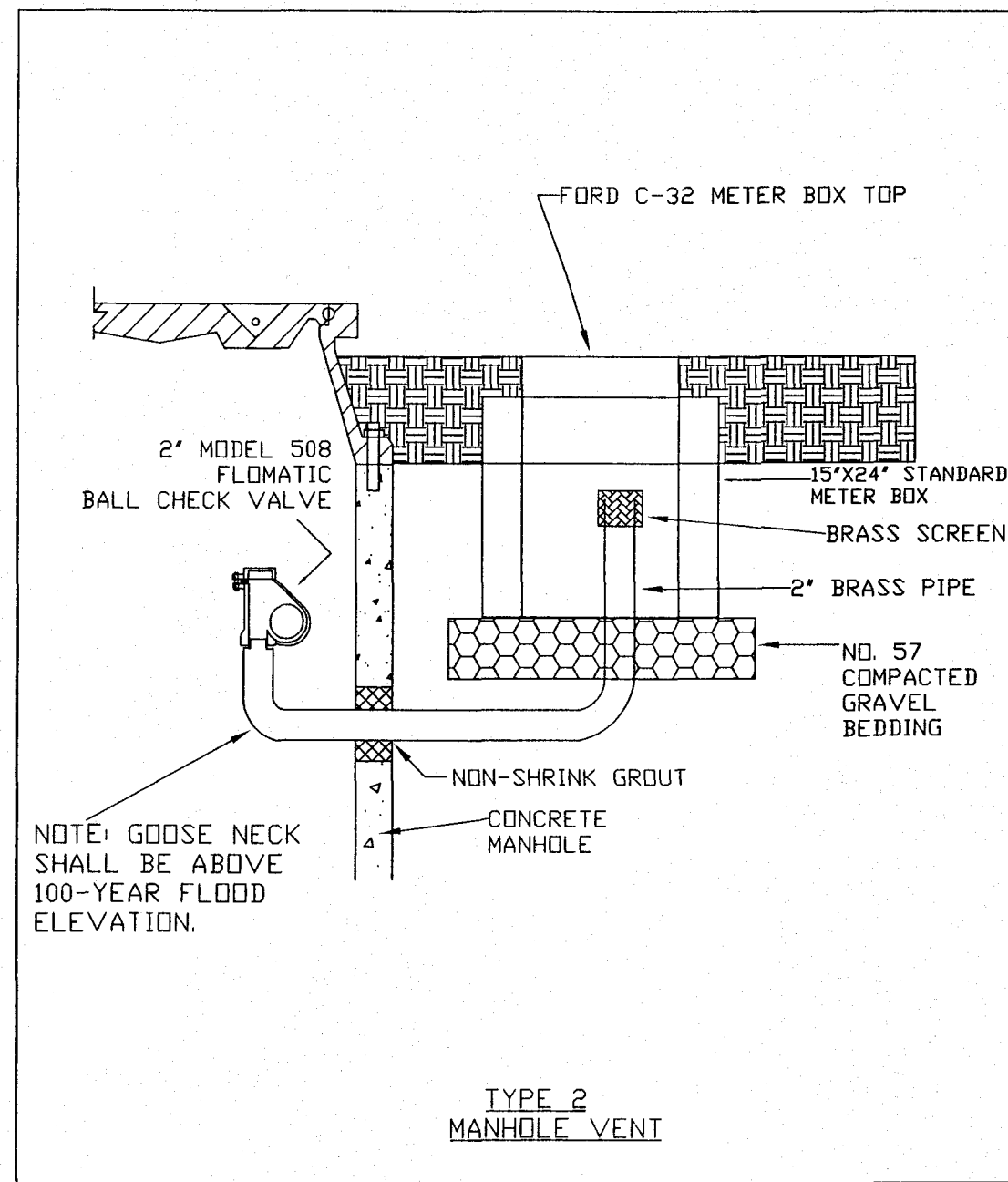
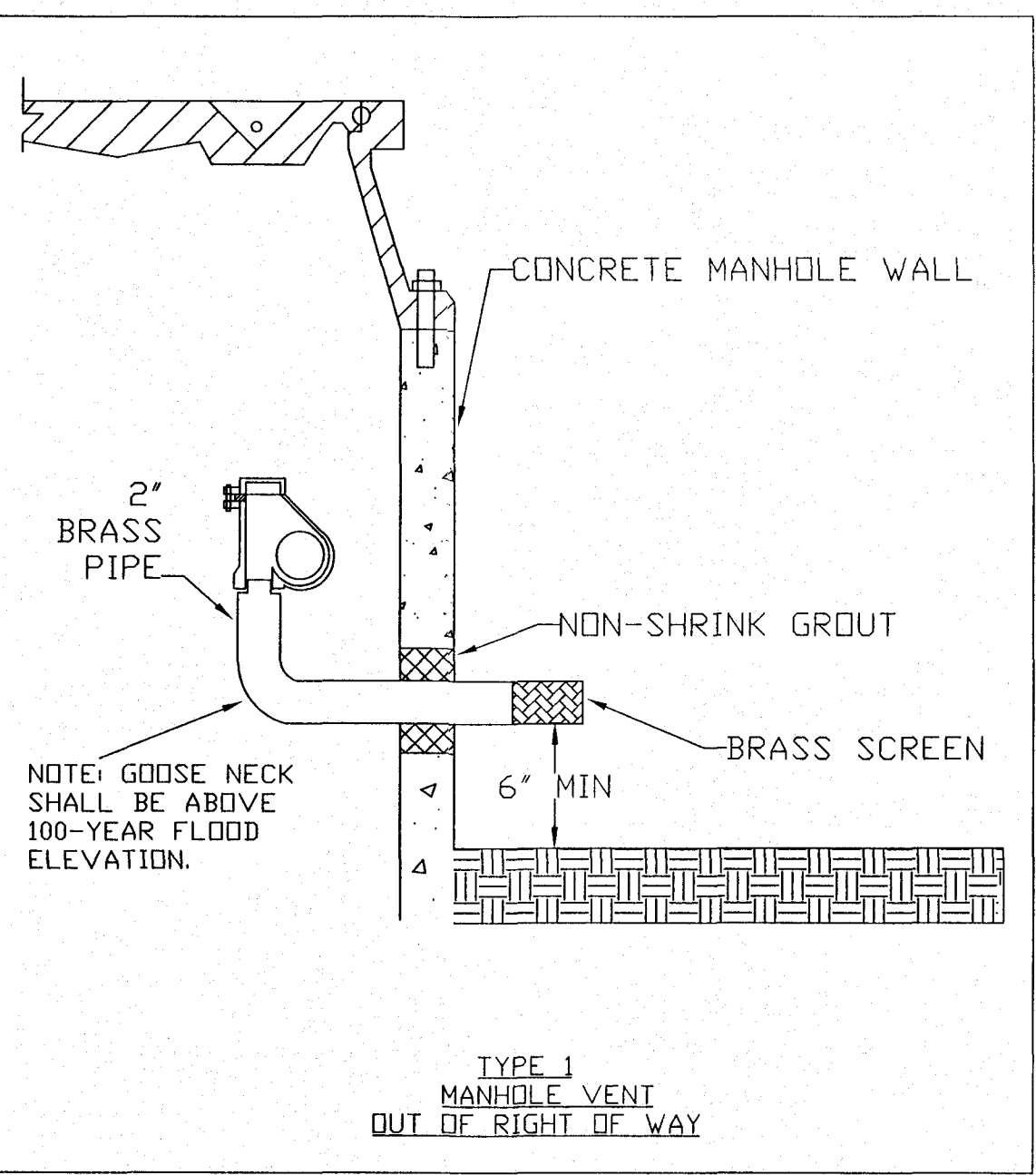
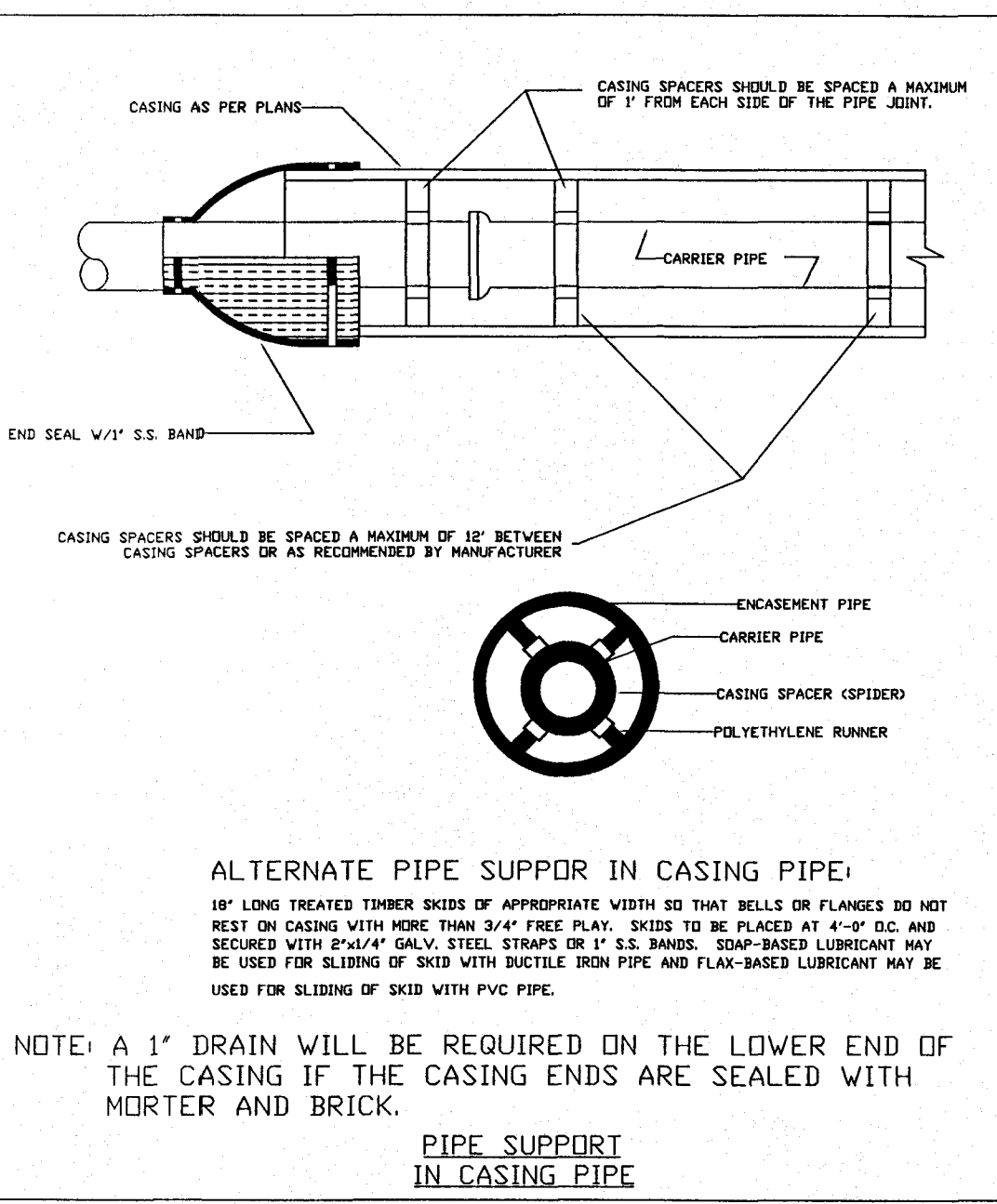
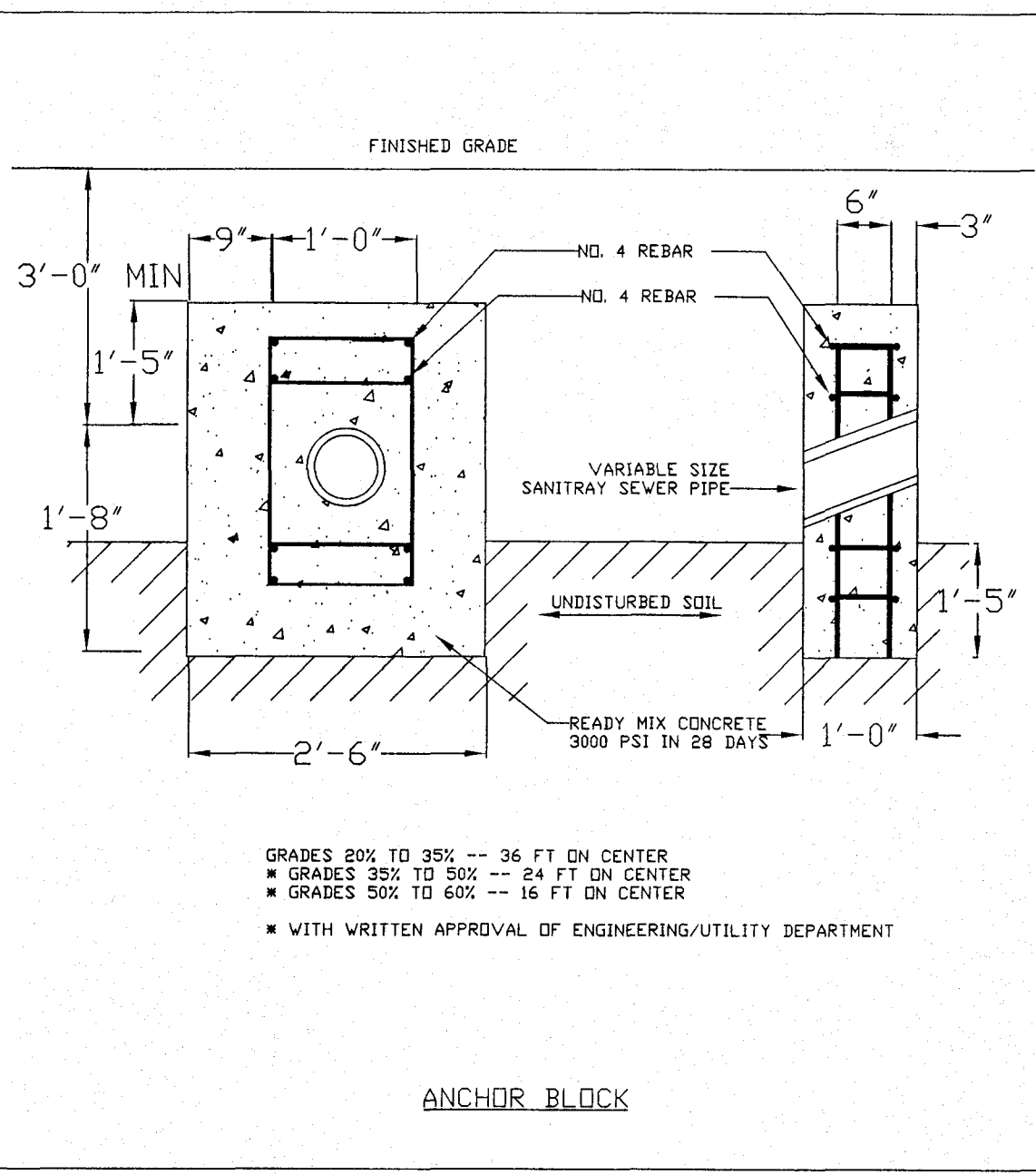
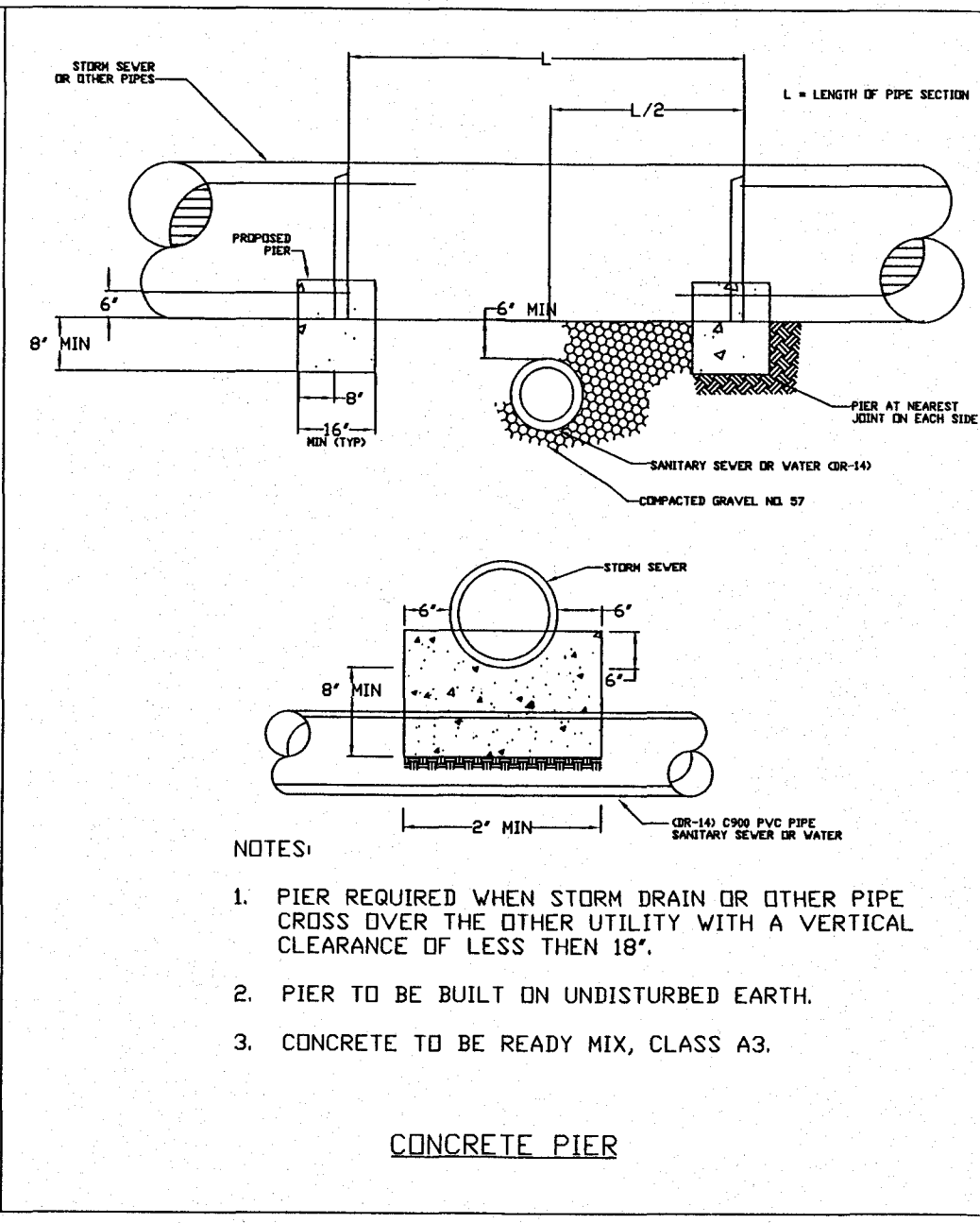
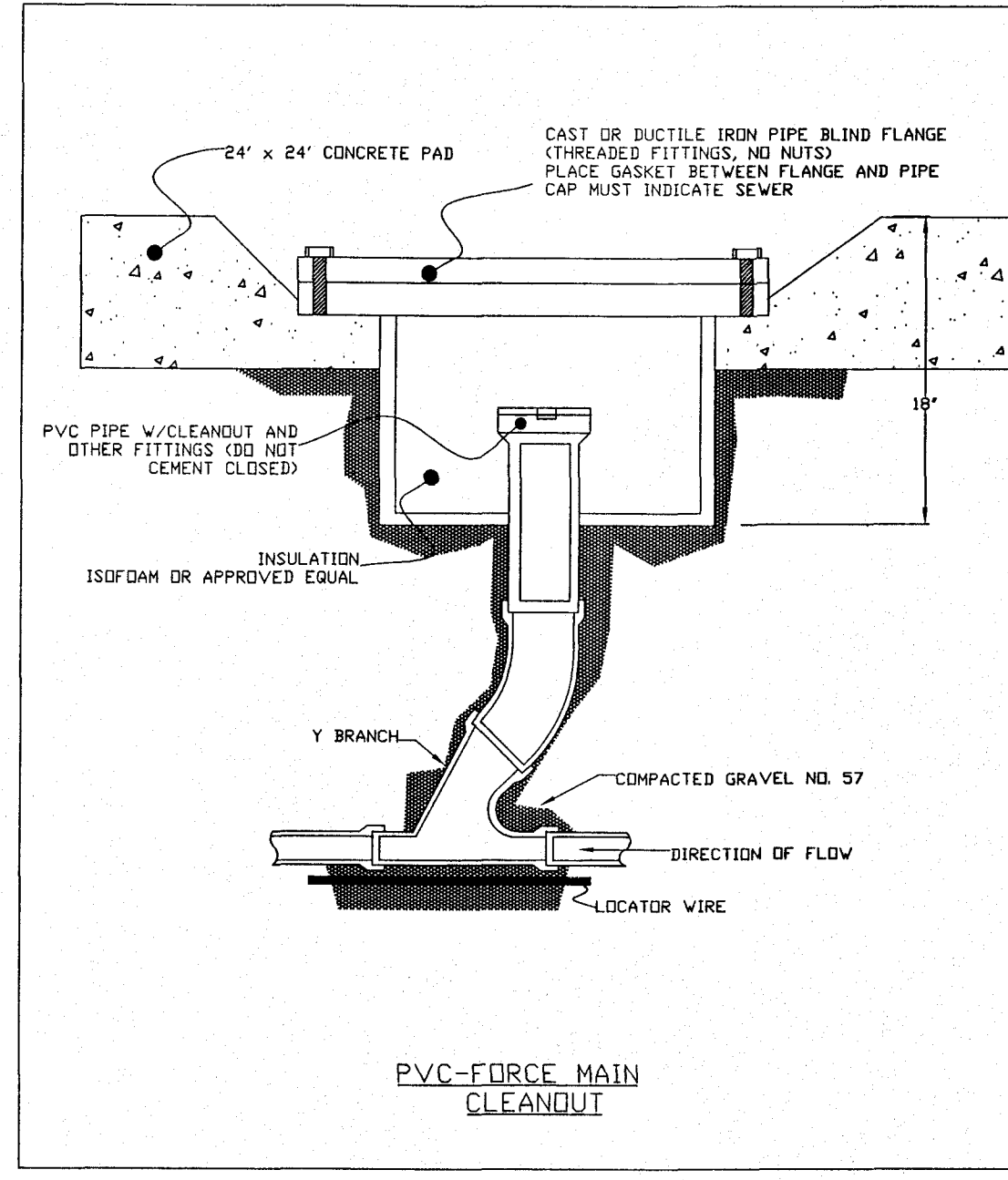


TABLE II-1
FINE AGGREGATE

AMOUNTS FINER THAN EACH LABORATORY SIEVE (SQUARE OPENINGS #), PERCENTAGE BY WEIGHT	3/8	NO. 4	NO. 8	NO. 16	NO. 30	NO. 50	NO. 100
GRADING	3/8	NO. 4	NO. 8	NO. 16	NO. 30	NO. 50	NO. 100
A	MIN 100	97+/-3	90+/-10	67+/-10	42+/-17	17+/-	MAX 10
B	MIN 100	97+/-3					MAX 10
C		MIN 100	97+/-				MAX 25

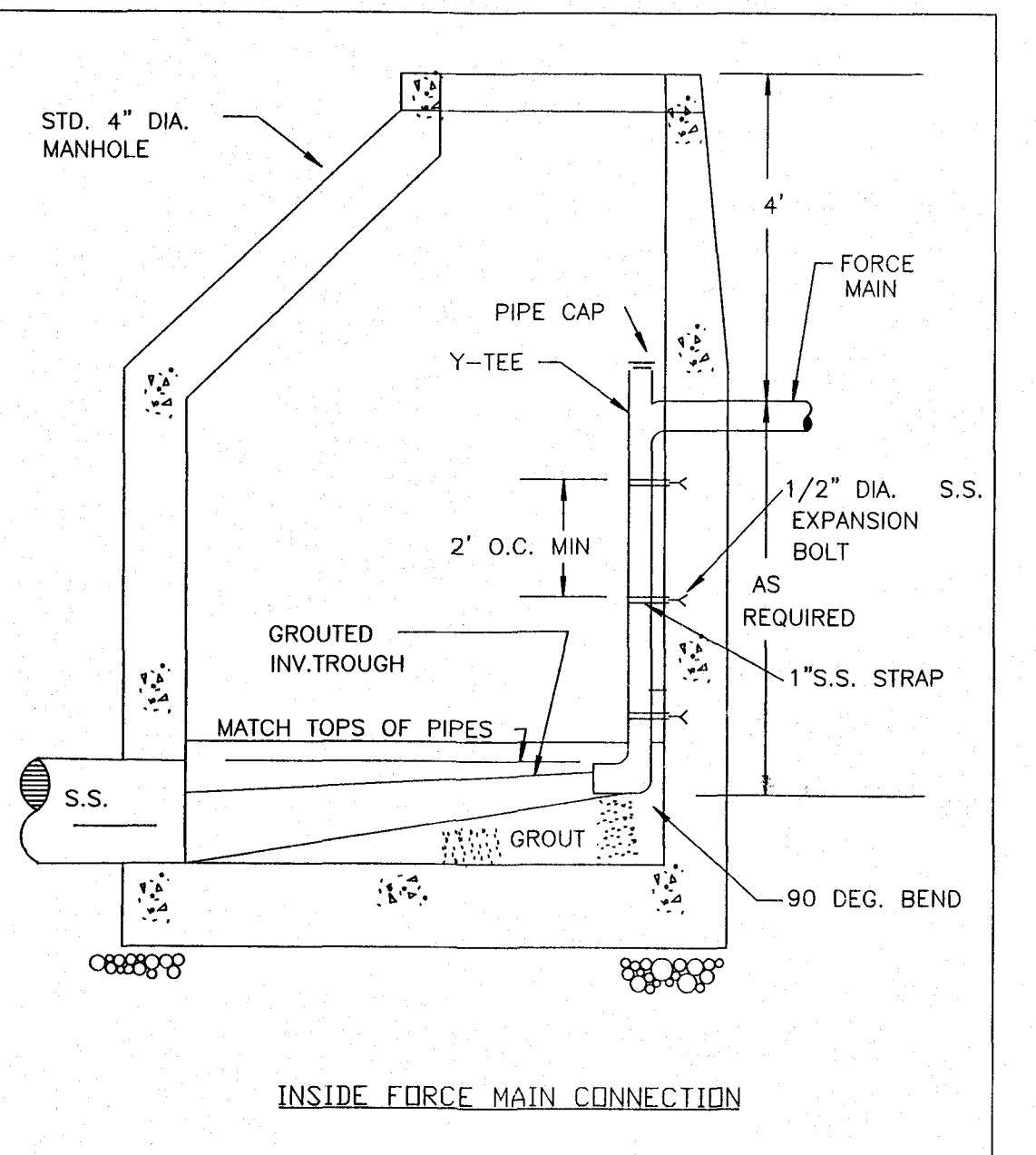
* In inches, except where otherwise indicated. Numbered sieves are those of the U.S. Standard Sieve Series.

EQUIVALENT PSI	HEIGHT OF GROUND WATER ABOVE PIPE INV. (FT.)
0.43	1
0.87	2
1.30	3
1.73	4
2.17	5
2.60	6
3.03	7
3.47	8
3.90	9
4.34	10
4.77	11
4.98	11.5

For anything above 11.5 VF, allow maximum 5.0 PSI.

NOTES:
1. Table based on 10 v.f. of water = 0.4335 PSI.
2. The appropriate PSI allowance for average vertical foot of ground water shall be added to the base starting pressure of 4.0 PSI, but in no case shall the resulting pressure be more than 9.0 PSI.
3. Interpolate for fractions of a foot of water.

AIR TESTING
BACK PRESSURE
EQUIVALENCY
TABLE



SEWER DETAILS