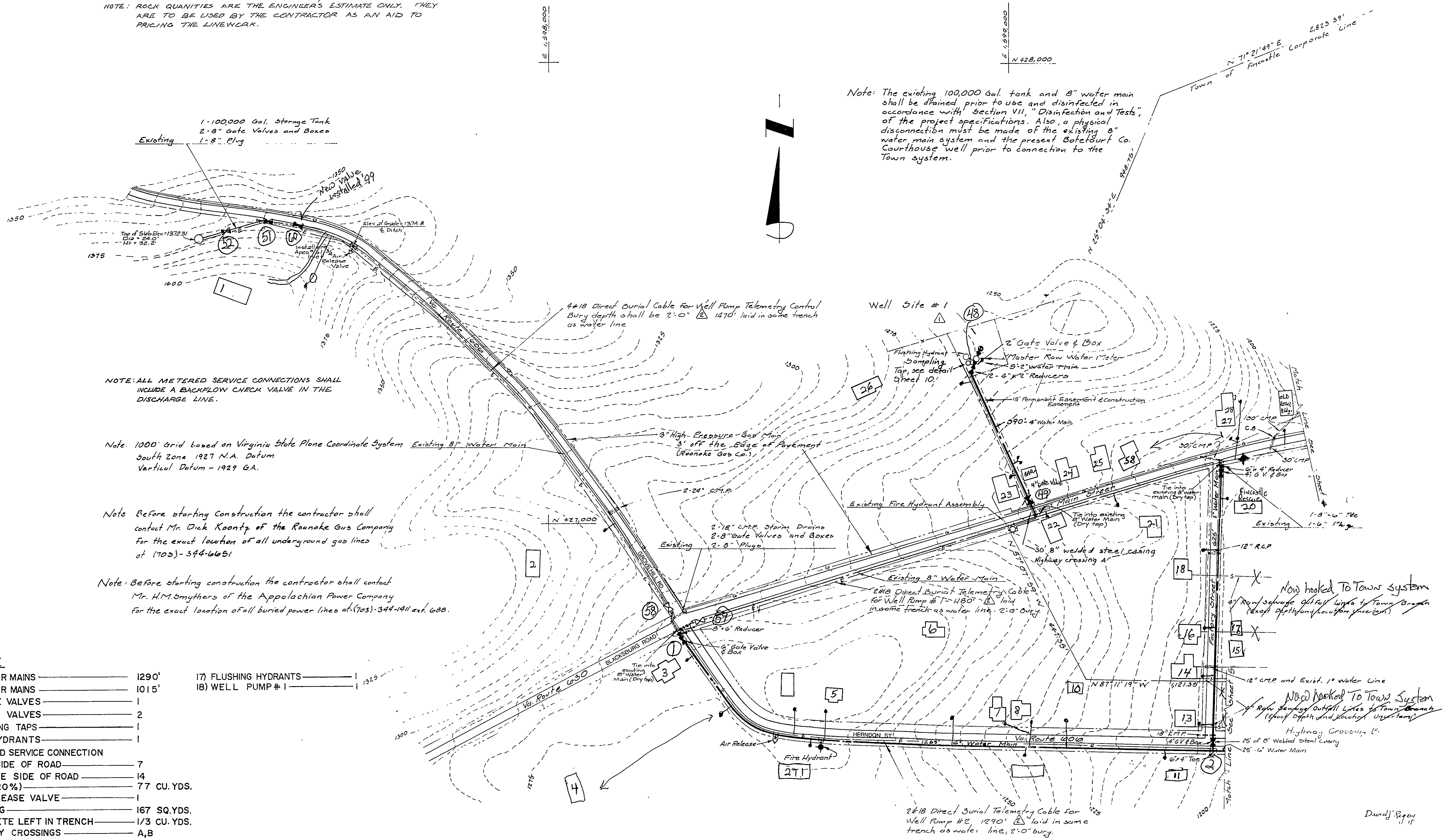


NOTE: IN ALL INSTANCES THE CONTRACTOR SHALL ATTEMPT TO JACK AND BORE THE HIGHWAY CROSSINGS. ONLY AFTER THE JACKING AND BORING HAS FAILED AND THE CONTRACTOR HAS OBTAINED APPROVAL FROM THE VA. DEPT. OF HIGHWAYS AND TRANSPORTATION MAY THE ROADS BE OPEN CUT. CUT PAVEMENT WILL BE RETURNED TO ORIGINAL CONDITION TO THE SATISFACTION OF THE HIGHWAY DEPT. EVEN IF IT MEANS REPAIRING THE ENTIRE ROADWAY. Payment for paving will be included in the cost of the road crossing and will be limited to a cut 18" wide across the roadway. If more paving is required it will be paid for separately.

NOTE: ROCK QUANTITIES ARE THE ENGINEER'S ESTIMATE ONLY. THEY ARE TO BE USED BY THE CONTRACTOR AS AN AID TO PRICING THE LINENWORK.

Note: The existing 100,000 Gal. tank and 8" water main shall be drained prior to use and disinfected in accordance with Section VII, "Disinfection and Tests," of the project specifications. Also, a physical disconnection must be made of the existing 8" water main system and the present Botetourt Co. Courthouse well prior to connection to the Town system.



NOTE: ALL METERED SERVICE CONNECTIONS SHALL INCLUDE A BACKFLOW CHECK VALVE IN THE DISCHARGE LINE.

Note: 1000' Grid based on Virginia State Plane Coordinate System South Zone 1927 N.A. Datum Vertical Datum - 1929 G.A.

Note: Before starting construction the contractor shall contact Mr. Dick Koontz of the Roanoke Gas Company for the exact location of all underground gas lines at (703)-344-6651

Note: Before starting construction the contractor shall contact Mr. H.M. Smythers of the Appalachian Power Company for the exact location of all buried power lines at (703)-344-1411 ext. 688.

TAKE OFF	
1) 6" WATER MAINS	1290'
2) 4" WATER MAINS	1015'
3) 6" GATE VALVES	1
4) 4" GATE VALVES	2
5) SAMPLING TAPS	1
6) FIRE HYDRANTS	1
7) METERED SERVICE CONNECTION	
SAME SIDE OF ROAD	7
OPPOSITE SIDE OF ROAD	14
8) ROCK (20%)	77 CU. YDS.
9) AIR RELEASE VALVE	1
10) SEEDING	167 SQ. YDS.
11) CONCRETE LEFT IN TRENCH	1/3 CU. YDS.
12) HIGHWAY CROSSINGS	A,B
13) MASTER METERS	1
14) PAVEMENT REPLACEMENT	8 SQ. YDS.
15) 2" WATER MAIN	5'
16) 2" GATE VALVE	1
17) FLUSHING HYDRANTS	1
18) WELL PUMP #1	1

DRAPER - ADEN ASSOCIATES, INC.
ENGINEERS - SURVEYORS - PLANNERS
BLACKSBURG, VIRGINIA

DESIGNED DJR
DRAWN DJR
CHECKED DJR
DATE 09-03-76

TOWN OF FINCASTLE
WATER SUPPLY & DISTRIBUTION SYSTEM
BOTETOURT COUNTY, VIRGINIA

REVISIONS:
1 Well site 10/21/76
2 Telemetry cable 5/10/77

SCALE: 1" = 100'
CONTOUR INTERVAL = 5'
PLAN No T-75-193

SHEET 3 OF 15