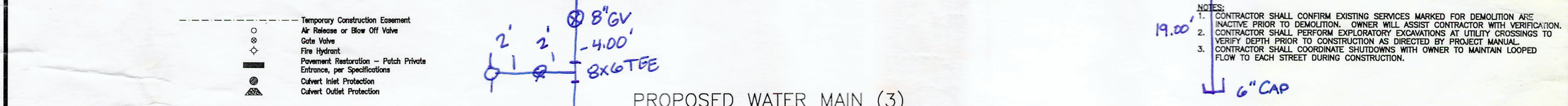
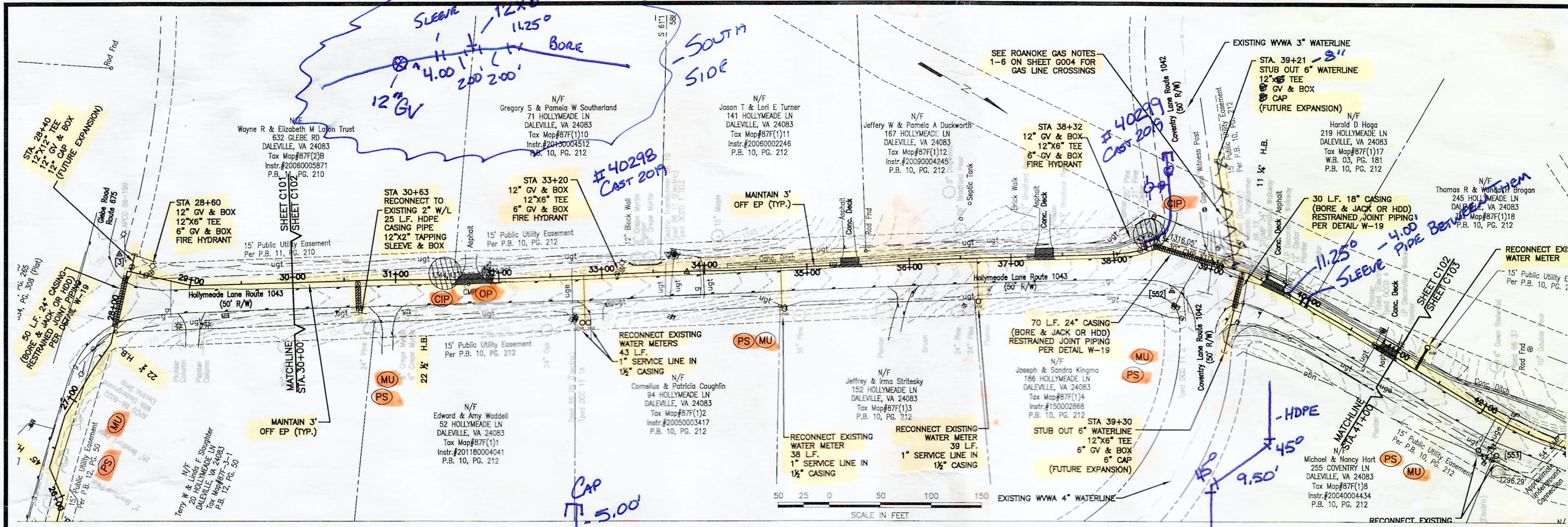


Nov 15, 2018 10:14am \\DATA01\Projects\2019\20190009\Engineering\CA01\20190009_Design_Sheets.dwg



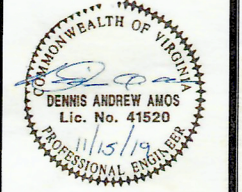
- NOTES:
- CONTRACTOR SHALL CONFIRM EXISTING SERVICES MARKED FOR DEMOLITION ARE INACTIVE PRIOR TO DEMOLITION. OWNER WILL ASSIST CONTRACTOR WITH VERIFICATION.
 - CONTRACTOR SHALL PERFORM EXPLORATORY EXCAVATIONS AT UTILITY CROSSINGS TO VERIFY DEPTH PRIOR TO CONSTRUCTION AS DIRECTED BY PROJECT MANUAL.
 - CONTRACTOR SHALL COORDINATE SHUTDOWNS WITH OWNER TO MAINTAIN LOOPED FLOW TO EACH STREET DURING CONSTRUCTION.

HURT & PROFFITT
 1861 PRATT DRIVE, SUITE 1100
 BLACKSBURG, VIRGINIA 24060
 800.763.5596 TOLL FREE
 540.552.5592 MAIN
 540.552.5729 FAX

ENGINEERING - SURVEYING - LAND DEVELOPMENT - ENVIRONMENTAL
 GEOTECHNICAL - CONSTRUCTION TESTING & INSPECTION - CULTURAL RESOURCES

**HOLLYMEADE-GLEBE ROAD
 GREENFIELDS TANK
 WATERLINE EXTENSION**
 DALEVILLE, VA

PROJECT NO.	20190009
LAT.	37° 25' 10"
LONG.	79° 55' 15"
DATE:	5-31-19
DRAWN BY:	CBD
CHECKED BY:	DAA



PLAN & PROFILE
 SHEET NO.
 C102