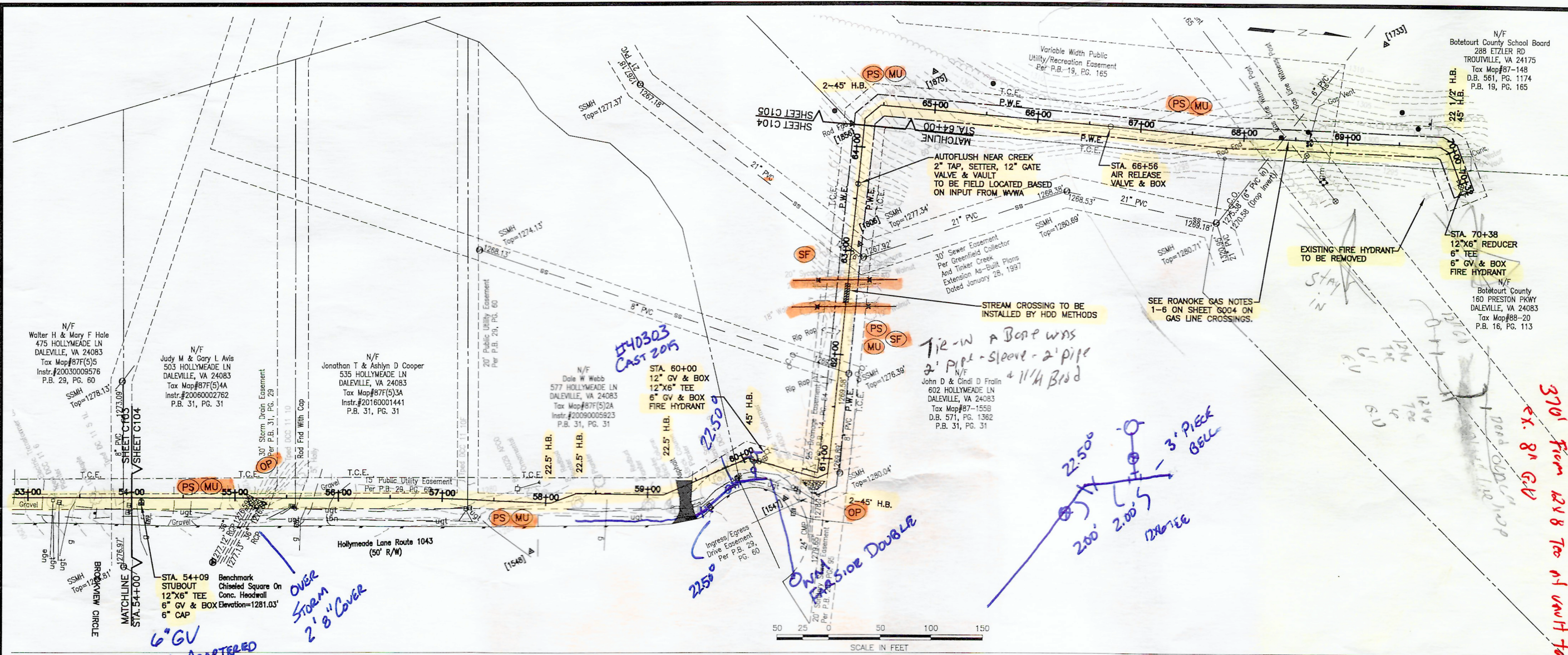


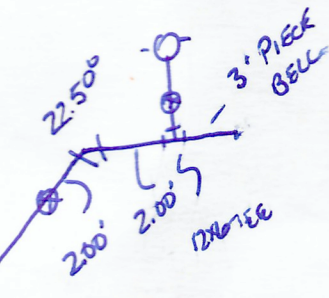
Nov 15, 2019 9:10:15am \\DATA\01\Projects\2019\20190009\Engineering\CAD\20190009_Design_Sheets.dwg



6\"/>

*140303
CAST 2015*

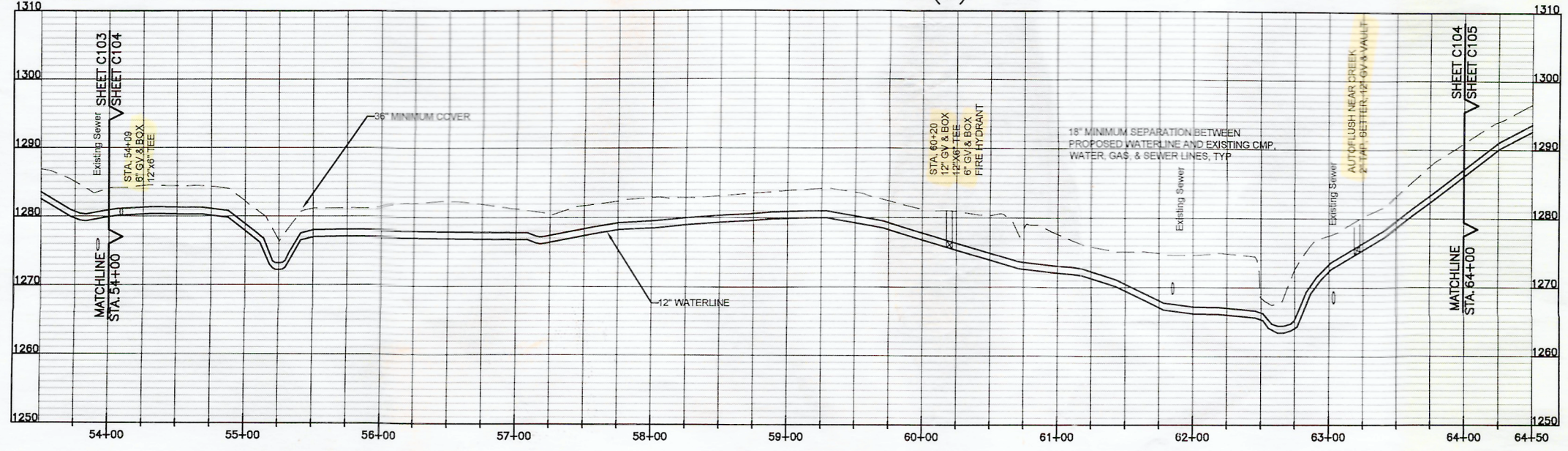
Tie-in a Bore w/ 2\"/>



370' From 12\"/>

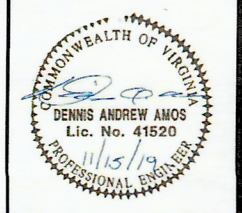
- Temporary Construction Easement
- Air Release or Blow Off Valve
- Gate Valve
- Fire Hydrant
- Pavement Restoration - Patch Private Entrance, per Specifications
- Culvert Inlet Protection
- Culvert Outlet Protection

PROPOSED WATER MAIN (5)



- NOTES:
1. CONTRACTOR SHALL CONFIRM EXISTING SERVICES MARKED FOR DEMOLITION ARE INACTIVE PRIOR TO DEMOLITION. OWNER WILL ASSIST CONTRACTOR WITH VERIFICATION.
 2. CONTRACTOR SHALL PERFORM EXPLORATORY EXCAVATIONS AT UTILITY CROSSINGS TO VERIFY DEPTH PRIOR TO CONSTRUCTION AS DIRECTED BY PROJECT MANUAL.
 3. CONTRACTOR SHALL COORDINATE SHUTDOWNS WITH OWNER TO MAINTAIN LOOPED FLOW TO EACH STREET DURING CONSTRUCTION.

PROJECT NO.	20190009
LAT.	37° 25' 10"
LONG.	79° 55' 15"
DATE:	5-31-19
DRAWN BY:	CBD
CHECKED BY:	DAA



PLAN & PROFILE

SHEET NO. C104

HURT & PROFFITT

1861 PRATT DRIVE, SUITE 1100
 BLACKSBURG, VIRGINIA 24060
 800.763.5596 TOLL FREE
 540.552.5592 MAIN
 540.552.5729 FAX

ENGINEERING • SURVEYING • LAND DEVELOPMENT • ENVIRONMENTAL
 GEOTECHNICAL • CONSTRUCTION TESTING & INSPECTION • CULTURAL RESOURCE

HOLLYMEADE-GLEBE ROAD
 GREENFIELDS TANK
 WATERLINE EXTENSION
 DALEVILLE, VA

N/F
 Botetourt County School Board
 288 ETZLER RD
 TROUTVILLE, VA 24175
 Tax Map#87-148
 D.B. 561, PG. 1174
 P.B. 19, PG. 165

N/F
 Botetourt County
 160 PRESTON PKWY
 DALEVILLE, VA 24083
 Tax Map#88-20
 P.B. 16, PG. 113