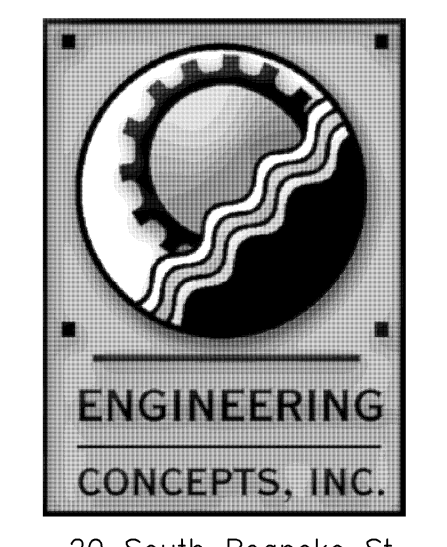
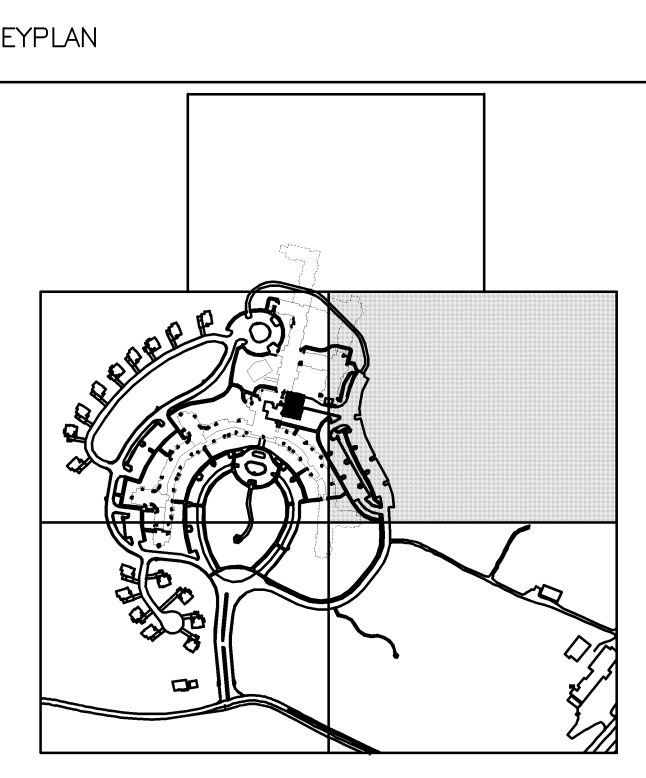
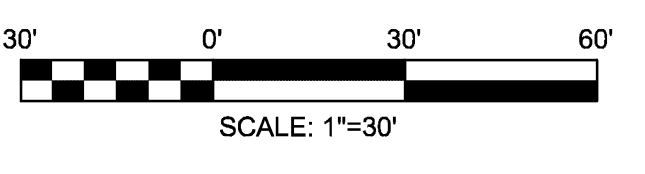
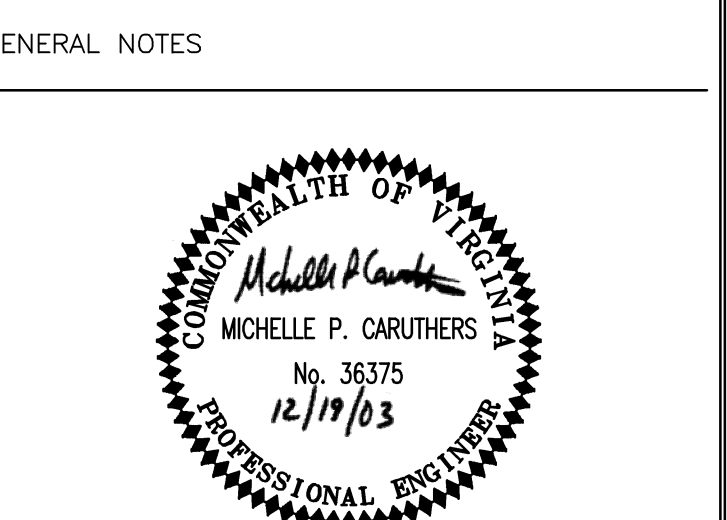


- NOTES:
1. UNLESS OTHERWISE SPECIFIED ALL RADII ARE 5.0'.
  2. [XX] REFERS TO PARKING COUNT TOTALS.
  3. [HEAVY DUTY PAVEMENT DESIGNATION]
  4. [LIGHT DUTY PAVEMENT DESIGNATION]
  5. [GRAVEL PAVEMENT DESIGNATION]
  6. ALL ROOF COLLECTORS SHALL BE 6" HDPE @ 2% MINIMUM SLOPE UNLESS NOTED OTHERWISE.
  7. ALL SANITARY SEWER LATERALS SHALL BE 4" PVC @ 2% MINIMUM SLOPE UNLESS NOTED OTHERWISE.
  8. ALL DOUBLE WATER SERVICE LATERALS SHALL BE 1" POLYETHYLENE. ALL SINGLE WATER SERVICE LATERALS SHALL BE 3/4" POLYETHYLENE.



20 South Roanoke St.  
 Fincastle, Virginia 24090  
 540.473.1253 540.473.1254(Fax)  
 email@engineeringconcepts.com  
 ECI PROJECT #02019



PROJECT TITLE  
**The Glebe**

**SFC S** Architecture  
 Engineering  
 Planning  
 Interiors  
 SFC S Inc. • 305 South Jefferson Street  
 Roanoke, Virginia 24011.2003  
 540.344.6664 • Fax 540.343.6925  
 www.sfc s.com

PROJECT DESIGNER	: SFC S
PROJECT ARCHITECT	: SFC S
PROJECT ENGINEER	: ECI
DRAWN BY	: ECI
CHECKED BY	: ECI
APPROVED BY	: ECI
NO.	REVISION DESCRIPTION DATE
2	SANITARY SEWER REVISIONS 8/06/03
3	REVISION PER BOT CO 11/12/03
4	REVISION PER BOT CO 12/11/03

DRAWING TITLE  
**SITE DIMENSIONAL AND UTILITY PLAN**

COMM. NO.	DATE
47115.00	11/12/03
DRAWING	SHEET
<b>C23</b>	23 OF 43

MENU


CADD VERSION  
 ACADR-14  
 PLOT SCALE  
 1:1  
 PLOT DATE  
 COMM. NO.  
 DRAWING NO.