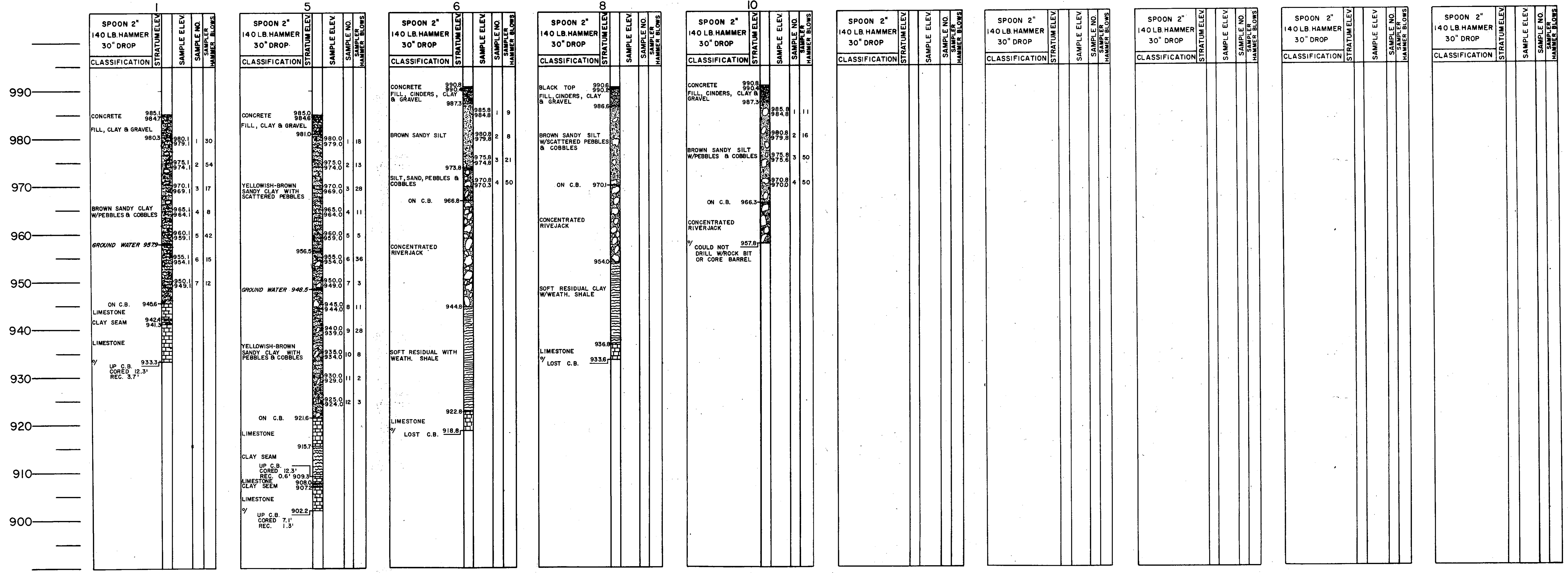
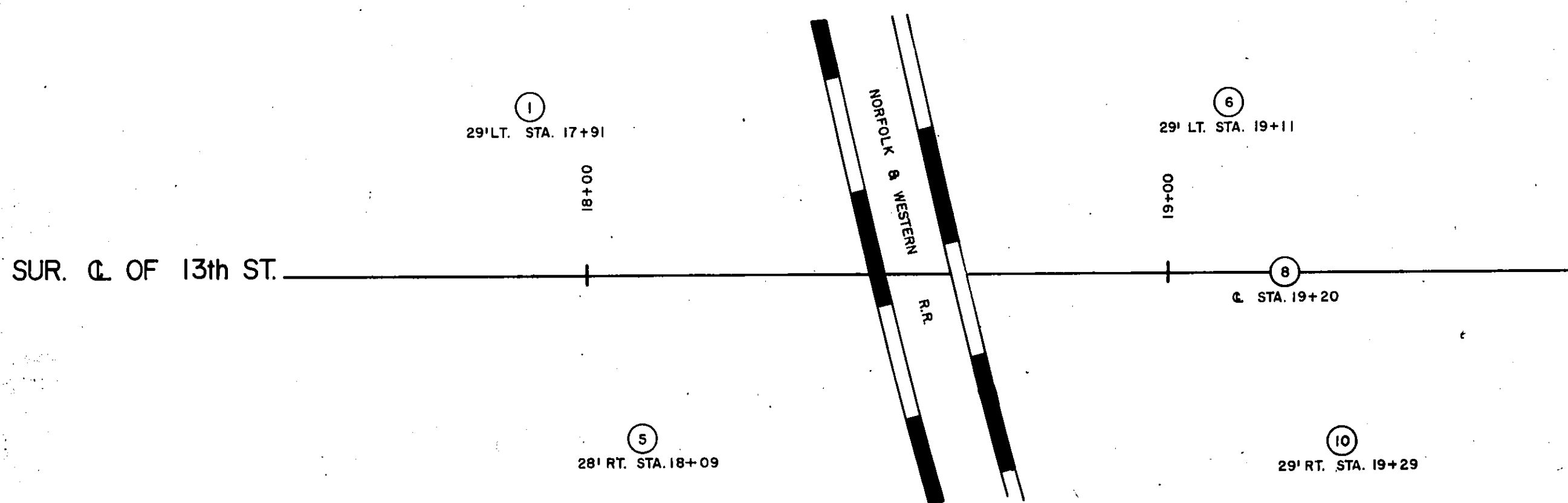


| FED. RD. DISTRICT | STATE | FEDERAL AID | | STATE | | SHEET NO. | TOTAL SHEETS |
|-------------------|-------|-------------|---------|-------|---------|-----------|--------------|
| | | ROUTE | PROJECT | ROUTE | PROJECT | | |
| | | | | | | | |

PLAN
1" = 20'



GEOLOGIC SECTION
SCALE: 1" = 10'

NOTE:
THE LOGS SHOWN ON THIS PLAN WERE TAKEN FROM FIELD NOTES
THEY REPRESENT THE BEST INFORMATION AVAILABLE TO THE
VIRGINIA DEPARTMENT OF HIGHWAYS
ELEVATION AT BOTTOM OF DRILL HOLE
EQUIPMENT - DIAMOND CORE DRILL
C.B. - CORE BARREL
GROUND WATER ELEV. NOT TAKEN IN HOLES 6, 8 & 10 DUE
TO HOLES COLLAPSING

VIRGINIA DEPARTMENT OF HIGHWAYS
ENGINEERING GEOLOGY
MATERIALS DIVISION
13TH STREET OVER NW RAILWAY
ROANOKE CITY
JULY 25, 1968

Drawn by: DEB E. UNDERWOOD, JR.
Traced by:
Checked by: CARL KUEHN

BORING LOGS
SHEET 19 OF 20

5925