

LEGEND:

- (M) PROPOSED METER
- PROP. SANITARY SEWER CLEANOUT
- E — PROPOSED ELECTRIC LINE
- G — PROPOSED GAS LINE
- SS — PROPOSED SANITARY SEWER LINE
- T — PROPOSED TELEPHONE LINE
- W — PROPOSED WATER LINE
- ▨ POTENTIAL UTILITY CONFLICT
- ⌘ GATE VALVE

UTILITY CALLOUTS:

- 6" 45° BEND WITHRUST RESTRAINT
- 6" PVC CLASS 150 AWWA C900 FIRELINE (MIN 36" COVER)
- 1 1/2" 45° BEND
- 1 1/2" TYPE "K" COPPER WATER SERVICE (MIN 36" COVER)
- 1" IRRIGATION SERVICE LINE
- 1" DOMESTIC METER
- 3/4" IRRIGATION METER W/ABOVE GROUND RPZ BACKFLOW PREVENTER
- 1" RPZ BACKFLOW PREVENTER
- CONNECT TO EXISTING GAS SERVICE
- CONTRACTOR TO COORDINATE WITH AEP POWER FOR CONNECTION TO EXISTING SERVICE
- CORE EXISTING MANHOLE @ EL 979.02
- CONTRACTOR TO COORDINATE WITH VERIZON FOR SERVICE.
- SAMPLING MANHOLE
- 4" 45° BEND WITHRUST RESTRAINT
- REMOTE SIAMESE CONNECTION
- 4" D.I.P.

SANITARY SEWER:

Number:	Top:	
CO1	Finished Grade	989.80' → BUILDING = 990.0
CO2	Finished Grade	988.40' → BUILDING = 990.0
CO3	Finished Grade	987.20' → BUILDING = 990.0
CO4	Finished Grade	986.70' → BUILDING = 990.0
CO5	Finished Grade	983.50'

NOTE: All sanitary sewer cleanouts shall be traffic bearing.

Pipe Run:	Length:	Approx. Inv.:
CO1 → Building	10 LF ~ 4" SDR 26 PVC @ 2.0% min.	
CO1 → CO2	70 LF ~ 4" SDR 26 PVC @ 2.0% min.	
BUILDING → CO2	10 LF ~ 4" SDR 26 PVC @ 10.0%	
CO2 → CO3	60 LF ~ 4" SDR 26 PVC @ 2.0% min.	
CO3 → CO4	25 LF ~ 4" SDR 26 PVC @ 2.0% min.	
BUILDING → CO4	15 LF ~ 4" SDR 26 PVC @ 10.0%	
CO4 → CO5	50 LF ~ 4" SDR 26 PVC @ 6.4%	
CO5 → New Manhole	70 LF ~ 4" SDR 26 PVC @ 6.4%	

GENERAL UTILITY NOTES:

ALL PROPOSED UTILITIES ARE TO BE INSTALLED UNDERGROUND, INCLUDING ELECTRIC, TELEPHONE, AND CATV.

CROSS CONNECTION CONTROL AND BACKFLOW PREVENTION SHALL BE IN ACCORDANCE WITH THE UNIFORM STATEWIDE BUILDING CODE.

CONTRACTOR SHALL REFERENCE BUILDING PLANS FOR UTILITY CONNECTIONS INSIDE BUILDING.

FRANCHISE UTILITY CONNECTIONS:

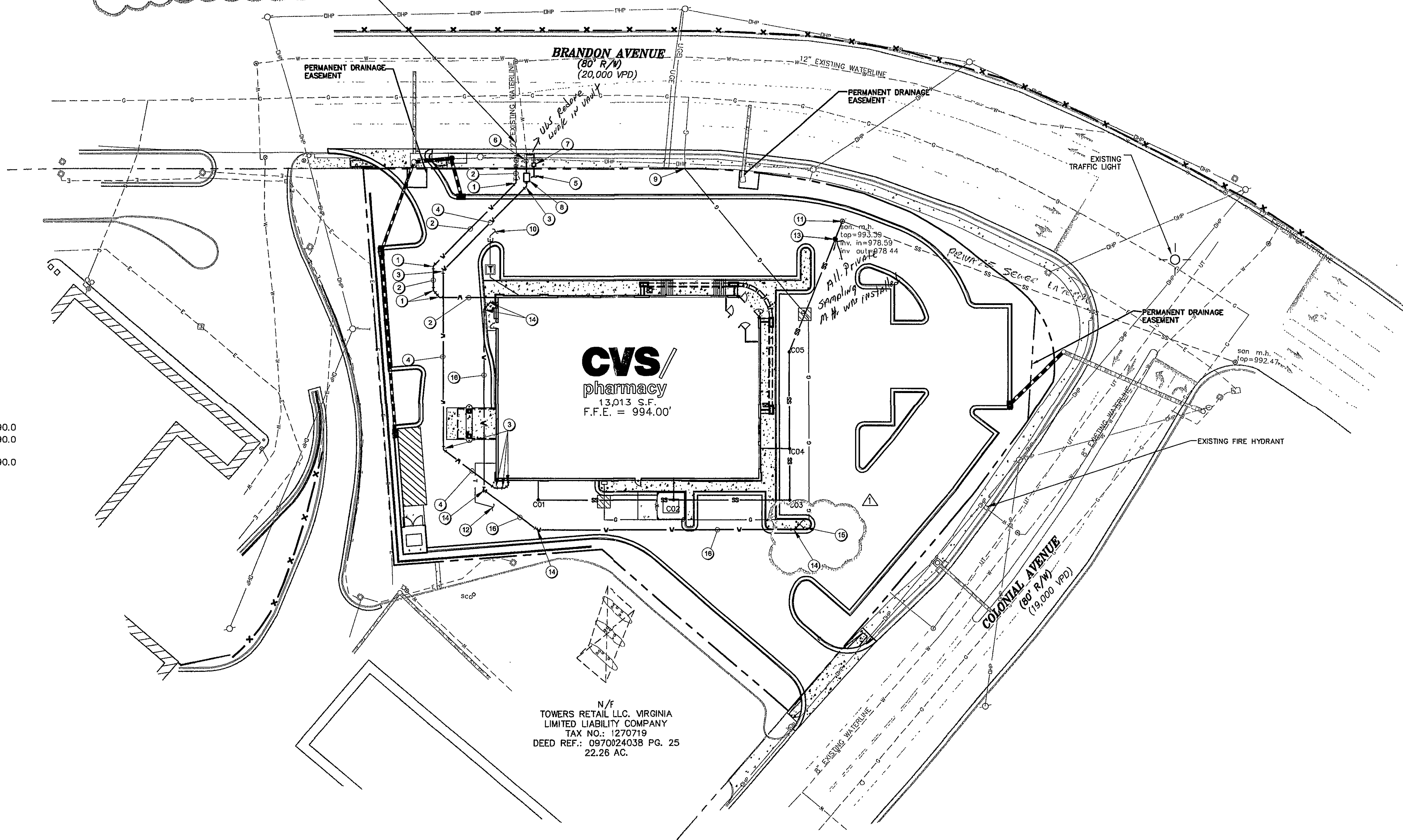
CONTRACTOR SHALL COORDINATE WITH ELECTRIC COMPANY FOR CONNECTION WITH EXISTING FACILITIES. CONTRACTOR TO FURNISH THE TRANSFORMER PAD. CONTRACTOR SHALL ALSO FURNISH (2) 5" SCH 40 CONDUITS WITH A PULL STRING FROM TRANSFORMER TO PROPERTY LINE. MIN. 2' COVER ON ALL CONDUIT. ANTICIPATE THAT POWER WILL COME FROM BRANDON AVENUE.

CONTRACTOR SHALL COORDINATE WITH TELEPHONE COMPANY FOR CONNECTION TO EXISTING FACILITIES. CONTRACTOR SHALL FURNISH A 4" SCH. 40 PVC CONDUIT (2' MIN. COVER) WITH A PULL STRING FROM THE BUILDING TO THE POINT ON THE PROPERTY LINE CLOSEST TO THE PRIMARY LINE. SERVICE BOARD SHALL BE LOCATED NEAR A GROUND SOURCE AND SHALL BE A MINIMUM OF 4'x4'x3/4". A #6 SOLID GROUND MUST ALSO BE AVAILABLE.

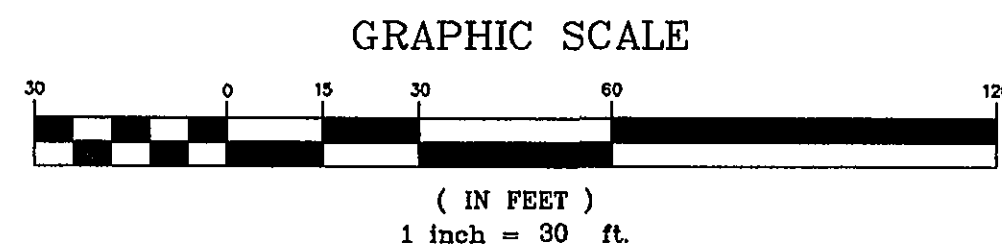
CONTRACTOR SHALL COORDINATE WITH GAS COMPANY FOR CONNECTION TO EXISTING FACILITIES.

CONTRACTOR SHALL FIELD DEFLECT ALL CONDUITS AND GAS SERVICE UNDER PROPOSED STORM, WATER, AND SEWER.

NOTE:
EXISTING WATER SERVICE HAS BEEN SEVERED.
CONTRACTOR TO NOTIFY WESTERN VIRGINIA
WATER AUTHORITY AT PRE-CONSTRUCTION
MEETING IN ORDER FOR SERVICE TO BE RESTORED.



ROANOKE, VA
CVS STORE 3949

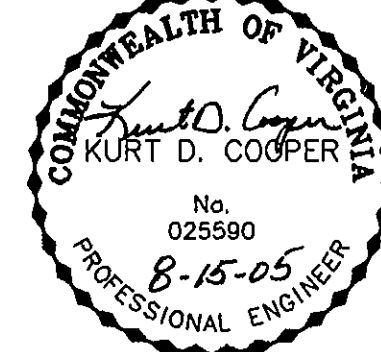


**Kimley-Horn
and Associates, Inc.**
1500 FOREST AVENUE, SUITE 115
RICHMOND, VIRGINIA 23229

CONSULTANT:

KIMLEY-HORN AND ASSOC.
1500 FOREST AVENUE
TEL (804) 673-3882
FAX (804) 673-3980

SEAL:



**CVS/
pharmacy**
13,013 S.F. PROTOTYPE
STORE NUMBER: #3949

INTERSECTION OF
BRANDON AVE & COLONIAL AVE.
ROANOKE, VIRGINIA

OWNER/DEVELOPER:

THE REBKEE COMPANY
1020 OLD BON AIR ROAD
RICHMOND, VA 23235
PHONE: (804) 560-0500
FAX: (804) 560-0778

REVISIONS:

△ CITY OF ROANOKE COMMENTS 6-27-05

LAYOUT COORD: COB

PLANNING MGR. COB

DRAWING BY: DHL

DATE: 05/09/05

JOB NUMBER: 113001048

TITLE:

UTILITY PLAN

SHEET NUMBER:

C6

COMMENTS: 05/12/2006

AS - BUILT