

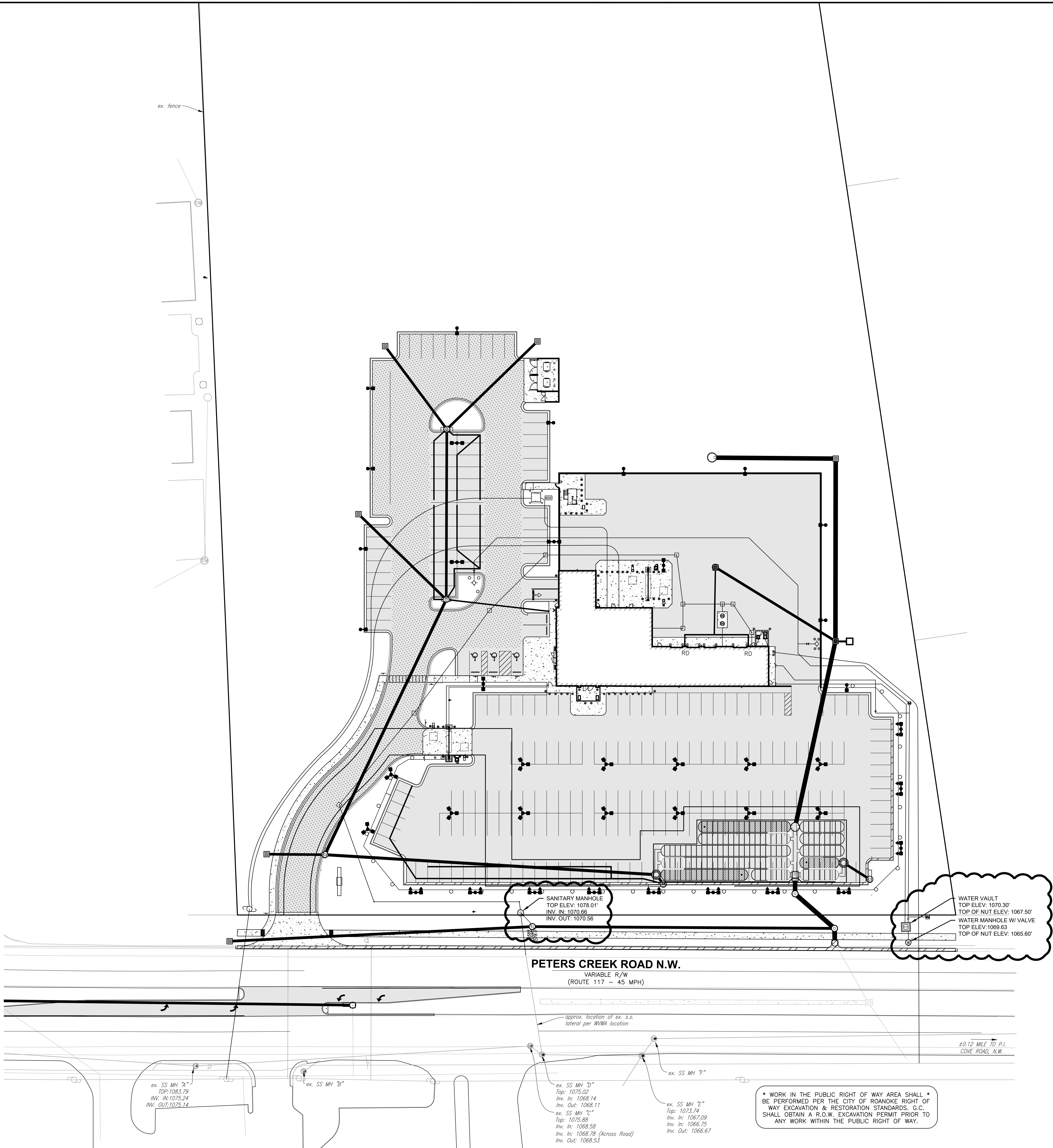
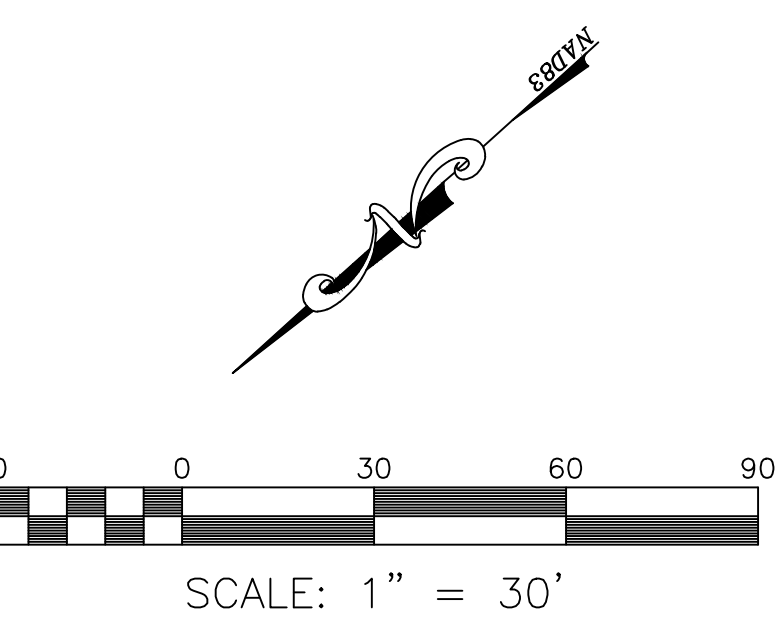
BLDG.	(L)	10 LF OF 4" PVC SDR-35 AT 1.04% (INV. AT BLDG. 1080.01)
(L)		S.S. C.O. PRIVATE (TRAFFIC-BEARING LID) TOP=1083.30 INV.=1081.0
(L)	(K)	28 LF OF 4" PVC SDR-35 AT 1.92%
(K)		S.S. C.O. PRIVATE (TRAFFIC-BEARING LID) TOP=1083.00 INV.=1080.50
(K)	(J)	8 LF OF 4" PVC SDR-35 AT 1.25%
BLDG.	(J)	14 LF OF 4" PVC SDR-35 AT 1.04% (INV. AT BLDG. 1081.00)
		OIL/WATER SEPARATOR TOP=1085.00 INV. IN=1080.80 INV. OUT=1080.80
(J)	(I)	6 LF OF 4" PVC SDR-35 AT 1.66%
(I)		S.S. C.O. PRIVATE (TRAFFIC-BEARING LID) TOP=1085.00 INV.=1080.40
(J)	(H)	30 LF OF 4" PVC SDR-35 AT 1.46%
BLDG.	(H)	24 LF OF 4" PVC SDR-35 AT 1.04% (INV. AT BLDG. 1081.50)
(H)		S.S. C.O. PRIVATE (TRAFFIC-BEARING LID) TOP=1085.39 INV.=1081.30
(H)	(G)	19 LF OF 4" PVC SDR-35 AT 1.04%
(G)		S.S. C.O. PRIVATE (TRAFFIC-BEARING LID) TOP=1085.21 INV.=1081.07 (FROM H) INV.=1079.96 (FROM I)
(G)	(F)	38 LF OF 4" PVC SDR-35 AT 1.23%
(F)		S.S. C.O. PRIVATE (TRAFFIC-BEARING LID) TOP=1084.79 INV.=1079.50
(F)	(E)	100 LF OF 4" PVC SDR-35 AT 3.13%
(E)		S.S. C.O. PRIVATE (TRAFFIC-BEARING LID) TOP=1086.22 INV.=1076.37
(E)	(D)	60 LF OF 4" PVC SDR-35 AT 1.04%
(D)		S.S. C.O. PRIVATE (TRAFFIC-BEARING LID) TOP=1084.43 INV.=1075.78
(D)	(C)	96 LF OF 4" PVC SDR-35 AT 1.25%
(C)		S.S. C.O. PRIVATE (TRAFFIC-BEARING LID) TOP=1085.65 INV.=1074.55
(C)	(B)	90 LF OF 4" PVC SDR-35 AT 1.25%
(B)		S.S. CLEANOUT (TRAFFIC-BEARING LID) TOP=1083.30 INV.=1073.43
(B)	(A)	78 LF OF 4" PVC SDR-35 AT 1.84%
(A)		S.S. C.O. PRIVATE TOP=1082.95 INV.=1072.00
(A)	(A1)	108 LF OF 4" PVC SDR-35 AT 1.06%
(A1)		S.S. C.O. PRIVATE TOP=1080.58 INV.=1070.85

S.S. MANHOLE (PUBLIC)  
 TOP=1077.91 1078.01'  
 INV. IN=1070.70 1070.66'  
 INV. OUT=1070.60 1070.56'  
 32 LF OF 6" PVC SDR-26 AT 2.05%  
 EX. INV (STUB):1069.91 2.20%

**NOTES**

1. G.C. TO CONFIRM & COORDINATE THE BUILDING PLAN LOCATION AND ELEVATION WITH M.E.P. AND ARCHITECTURAL DRAWINGS PRIOR TO CONSTRUCTION OF LATERAL.
2. G.C. TO CONFIRM THE TIE-IN LOCATION AND ELEVATION TO THE EXISTING MANHOLE PRIOR TO CONSTRUCTION AND NOTIFY THE ENGINEER OF ANY DISCREPANCIES.
3. G.C. SHALL CORE DRILL THE EXISTING MANHOLE AND PROVIDE A FLEXIBLE BOOT CONNECTION FOR THE PROPOSED CONNECTION.

AS-BUILT DRAWING NOTE:  
AS-BUILT DRAWING FOR SANITARY SEWER AND WATERLINE IMPROVEMENTS ARE FOR AS-BUILT PURPOSES ONLY. NO IMPROVEMENTS OTHER THAN WATER AND SANITARY SEWER STRUCTURES WERE AS-BUILT OR INDICATED AS SUCH ON THE SUBJECT PLAN SET. UNDERGROUND PIPING WAS NOT LOCATED. LOCATION SHOWN IS APPROXIMATE BASED ON SURFACE FEATURES AND INFORMATION PROVIDED BY CONTRACTOR.



**BALZER**  
**& ASSOCIATES**  
PLANNERS / ARCHITECTS  
ENGINEERS / SURVEYORS

Roanoke / Richmond  
New River Valley / Staunton  
Harrisonburg / Lynchburg

**www.balzer.cc**

1208 Corporate Circle  
Roanoke, VA 24018  
540.772.9580

**LATEST DA/PC** DA19-037/ PC19-036

**DRAWN BY:** BALZER & ASSOC. / BTC

**CHECKED BY:** BALZER & ASSOC. / CPB

[illegible]

**CARmax**  
---  
**THE AUTO SUPERSTORE**

CARMAX THE AUTO SUPERSTORE, INC.  
12800 TUCKAHOE CREEK PARKWAY RICHMOND, VA 23238

**STORE NO. 6154  
2839 PETERS CREEK ROAD  
ROANOKE, VA 24019**

<b>PROJECT NO.</b>	04180107.00
--------------------	-------------

**DATE** 18 AUGUST 2021

## SHEET TITLE

WATER & SEWER
AS-BUILT PLAN

**SHEET NO.** **AB1**