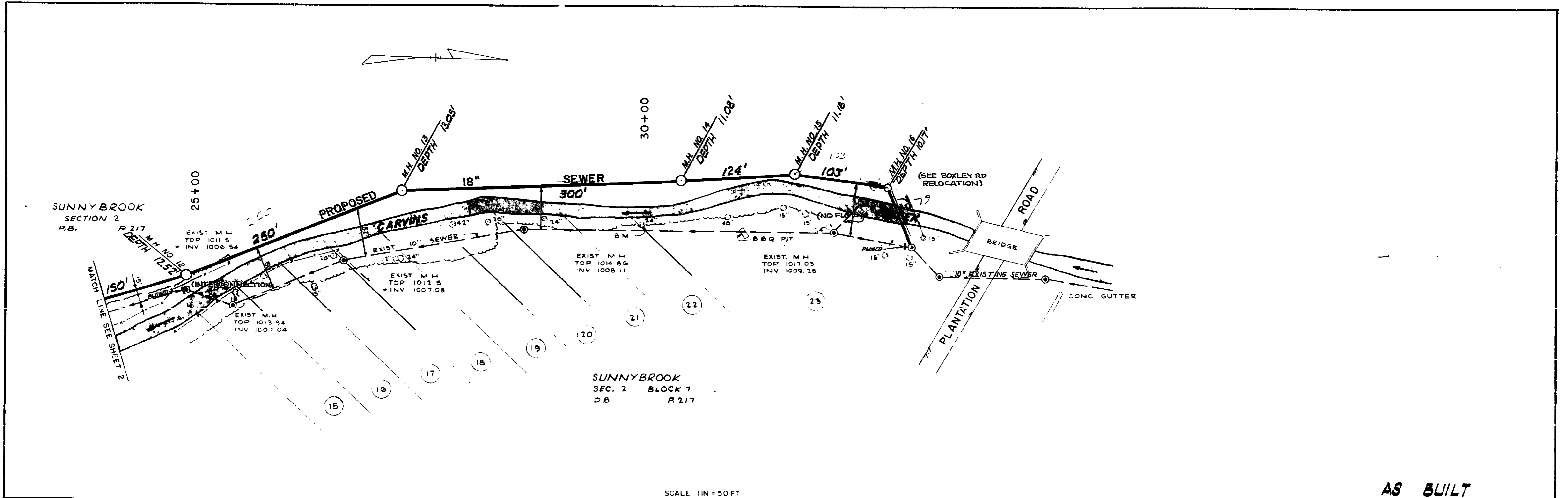


PLAN
 DATE: 11-15-71
 DRAWN BY: JWC
 CHECKED BY: JWC
 IN CHARGE: JWC

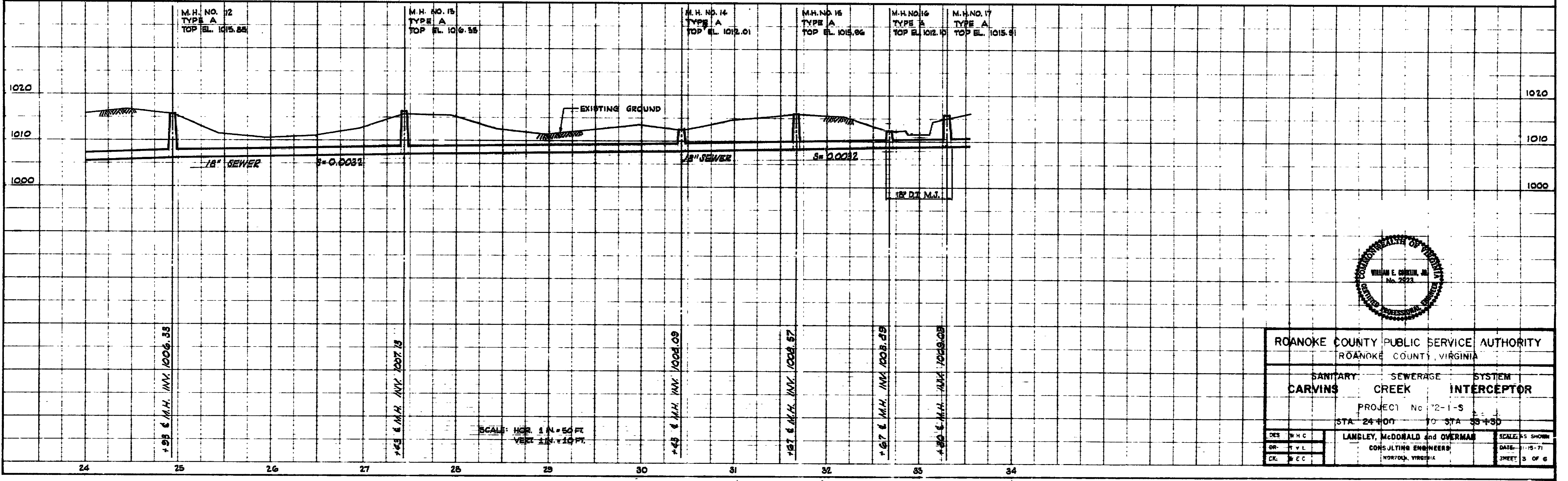


SUNNYBROOK
 SEC. 2 BLOCK 7
 D.B. P. 217

SCALE 1" = 50 FT

AS BUILT

PROFILE
 DATE: 11-15-71
 DRAWN BY: JWC
 CHECKED BY: JWC
 IN CHARGE: JWC



SCALE: HOR. 1" = 50 FT
 VERT. 1" = 10 FT



ROANOKE COUNTY PUBLIC SERVICE AUTHORITY ROANOKE COUNTY, VIRGINIA		
SANITARY:	SEWERAGE	SYSTEM
CARVINS	CREEK	INTERCEPTOR
PROJECT No. 72-1-S		
STA. 24+00 TO STA. 33+50		
DES. WNC	LANEY, McDONALD and OVERMAN	
DR. T.V.L.	CONSULTING ENGINEERS	
CK. J.E.C.	NORFOLK, VIRGINIA	
DATE: 11-15-71		SCALE: AS SHOWN
		SHEET 3 OF 6

K-E PLATE 1 PLAN PROFILE
 EQUIP. & ENGR. CO.
 487008 MADE IN U.S.A.

SI-0210 3

3435

