

- SITE NOTES:**
1. THIS PROJECT REQUIRES THE INSTALLATION OF SANITARY SEWER MAIN AND SANITARY SEWER LATERALS. THE INSTALLATION ANTICIPATES THE USE OF DIRECTIONAL DRILL INSTALLATION TO AVOID THE RECONSTRUCTION OF WHITE EAGLE LANE. ACTUAL LENGTH OF DIRECTIONAL DRILL IS AT THE DISCRETION OF THE CONTRACTOR. INSTALLATION OF SEVEN (7) LATERALS ARE ANTICIPATED.
 2. THE CONTRACTOR SHALL INSTALL THE PROPOSED SANITARY SEWER MAIN FROM MANHOLE 3 (PROVIDED BY OTHERS), INSTALLING THE MAIN TO MANHOLE 6 (A NEW DROP MANHOLE), INSTALL SEWER MAIN AND LATERAL TO MANHOLE 6A1 (NEW MANHOLE) AND INSTALL SEWER MAIN AND LATERALS TO MANHOLE 6A2 (UTILIZE MANHOLE ON SITE). THIS PROJECT INCLUDES ALL WORK NECESSARY TO INSTALL THE SEWER MAIN, MANHOLES AND LATERALS AS SHOWN.
 3. THE CONTRACTOR SHALL PROVIDE EROSION & SEDIMENT CONTROL MEASURES AS REQUIRED TO CONSTRUCT THE SANITARY SEWER MAIN, LATERALS, AND MANHOLES. THE MINIMUM REQUIRED EROSION CONTROL MEASURES ARE SHOWN ON THIS PLAN.
 4. THIS PROJECT IS AN ADJUSTMENT OF A PORTION AND A CONTINUATION OF THE WESTERN VIRGINIA WATER AUTHORITY CHEROKEE HILLS SEWER 4900 BLOCK PROJECT.

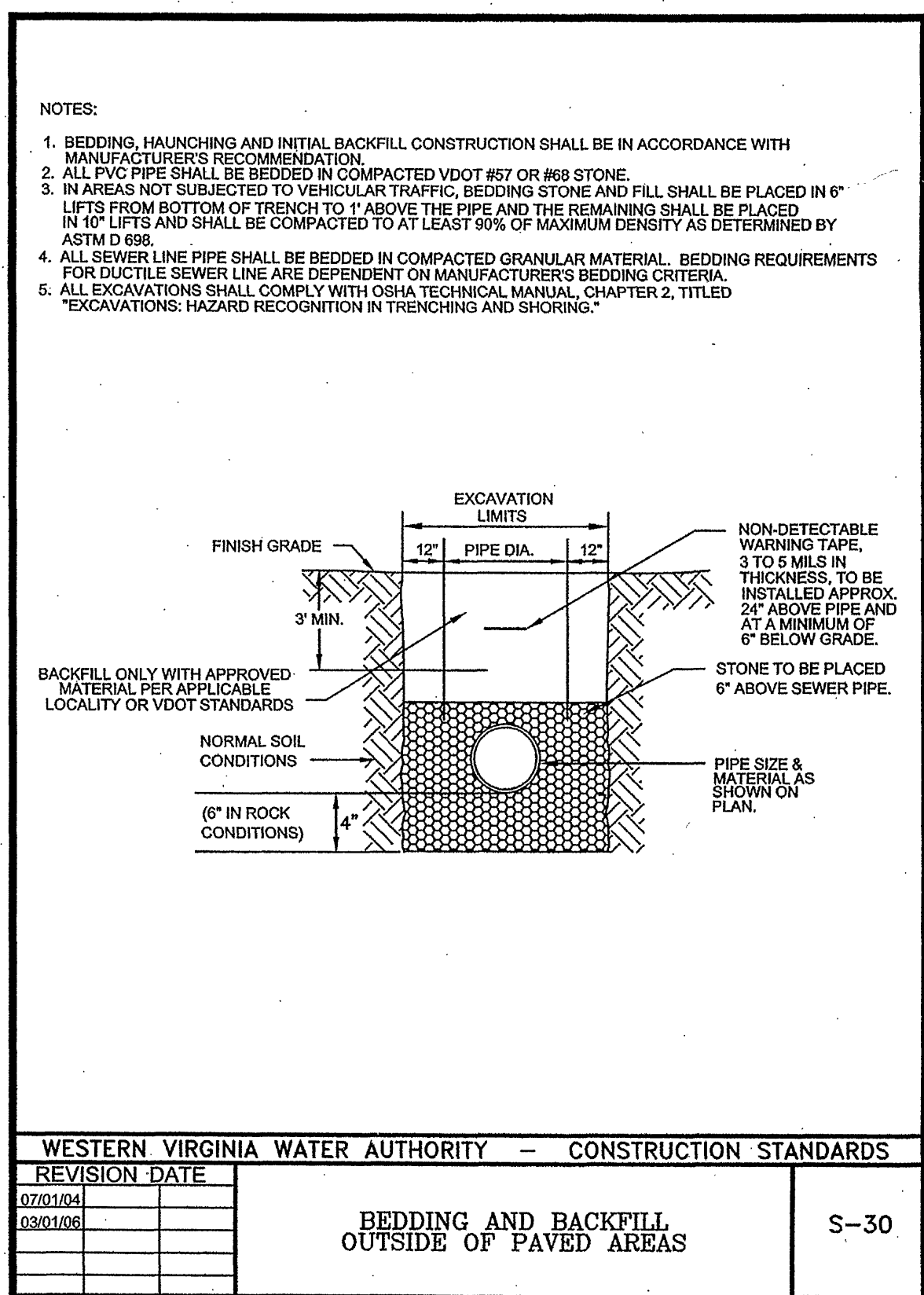
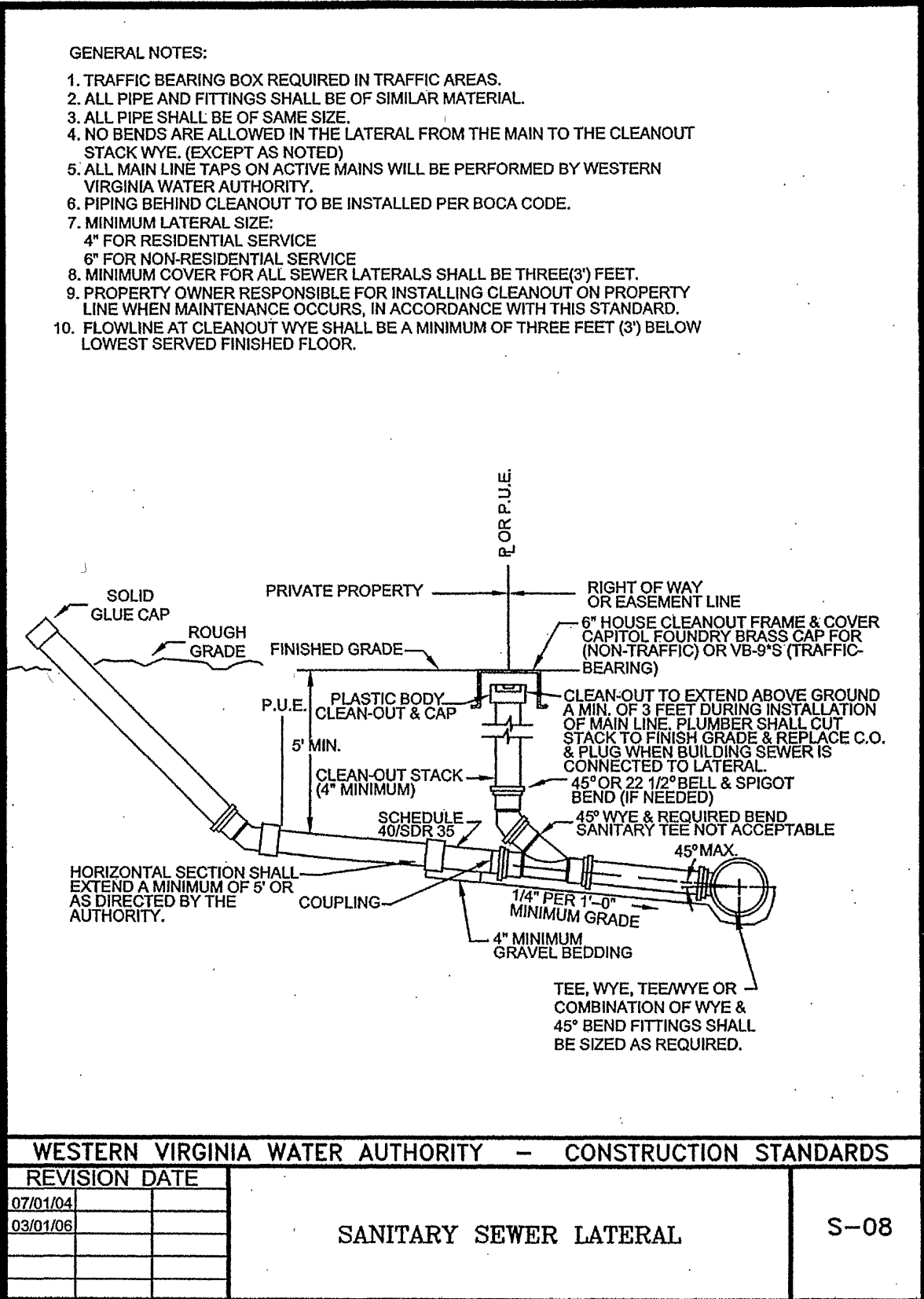
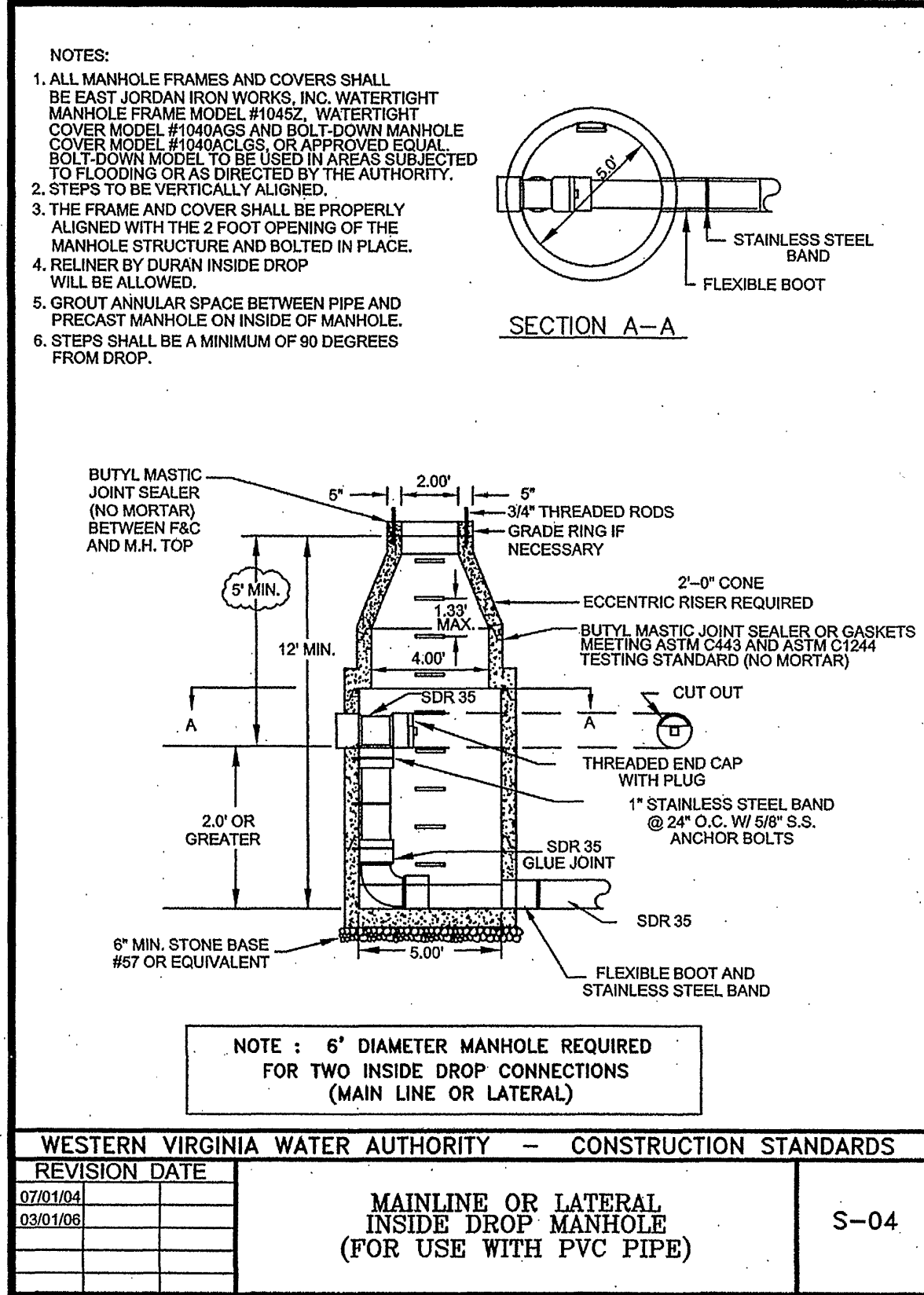
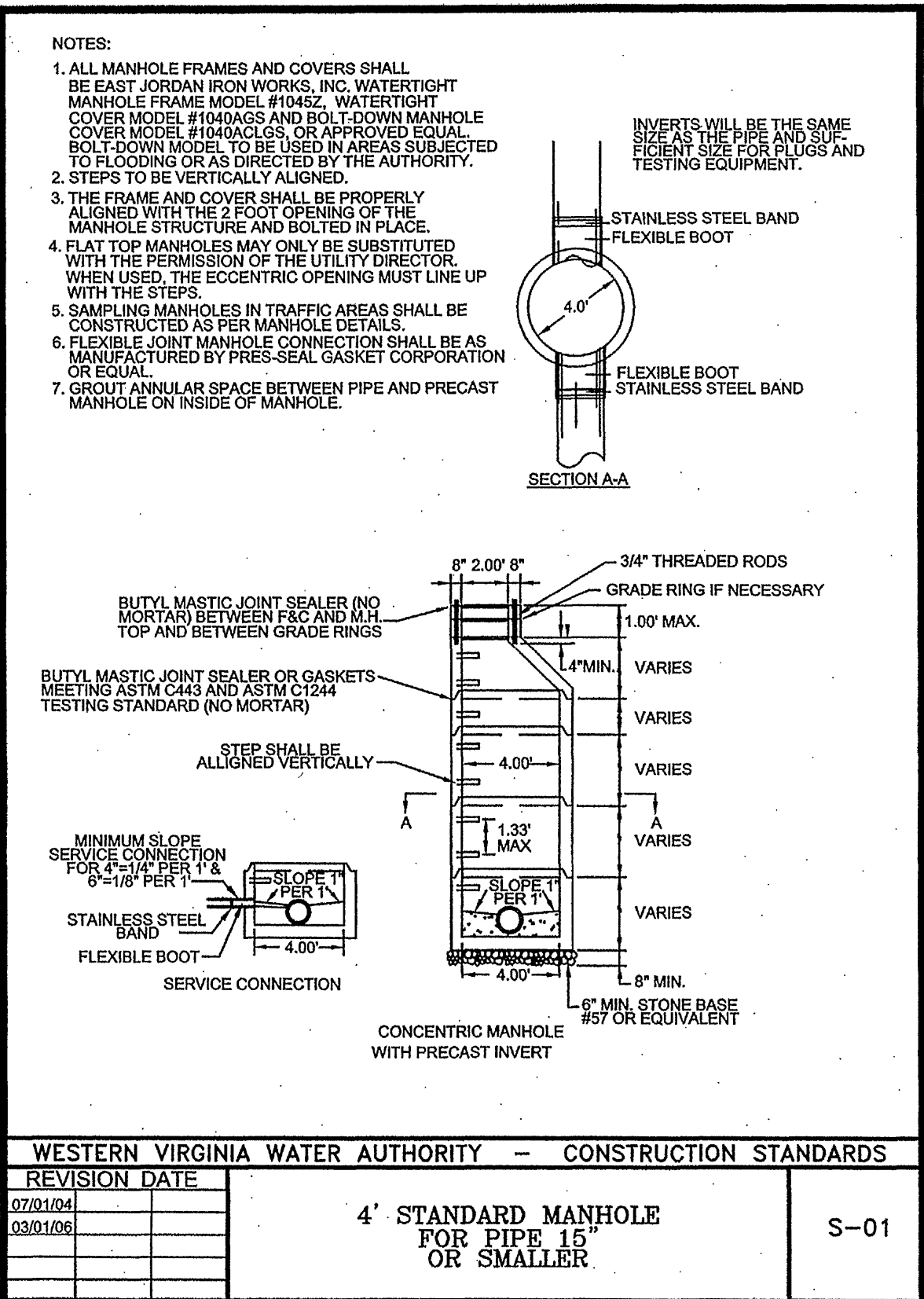
- GENERAL NOTES:**
1. THE LOCATION OF EXISTING UTILITIES IS APPROXIMATE BASED UPON MAPPING PROVIDED BY WVWA AND VISUAL INSPECTION. THE CONTRACTOR SHALL ANTICIPATE ENCOUNTERING UNDERGROUND ELECTRIC, TELEPHONE, CABLE LINES, EXISTING WATERLINES, AND GAS LINES. THE CONTRACTOR SHALL CONTACT "MISS UTILITY" PRIOR TO ANY EXCAVATION.
 2. PAVEMENT RECONSTRUCTION IS NOT ANTICIPATED, HOWEVER, SHOULD PAVEMENT RECONSTRUCTION OCCUR, THE CONTRACTOR SHALL PROVIDE A NEAT, VERTICAL SAW CUT ALONG THE PAVEMENT EDGE TO BE REMOVED. THE CONTRACTOR SHALL PROTECT THE SAW CUT FOR THE PAVEMENT RECONSTRUCTION PROCESS IN ACCORDANCE WITH VDOT AND THE WESTERN VIRGINIA WATER AUTHORITY (WVWA).
 3. REFERENCE IS DIRECTED TO THE BENCHMARKS SHOWN ON THE PLAN IF ANY. THESE BENCHMARKS ARE BASED ON A PROJECT DATUM. SEE WVWA PROJECT FOR BENCHMARK INFORMATION. CONTOURS SHOWN WITHIN THE SANITARY SEWER ALIGNMENT ARE BASED ON AERIAL MAPPING BY ROANOKE COUNTY.
 4. REFERENCE IS DIRECTED TO THE REQUIRED EROSION CONTROL MEASURES FOR THE SANITARY SEWER INSTALLATION.

- THE CONTRACTOR SHALL BE FAMILIAR WITH THE FOLLOWING WESTERN VIRGINIA WATER AUTHORITY (WVWA) DETAILS:
- S-01 4' STANDARD MANHOLE - 2 TOTAL
 - S-04 5' DROP MANHOLE - 1 TOTAL
 - S-08 SANITARY SEWER LATERALS - 6 TOTAL
 - S-30/G01 STONE BEDDING - 100 TONS
- OTHER GENERAL ITEMS INCLUDE THE FOLLOWING ITEMS:
- DIRECTIONAL DRILLING OF LATERALS
 - WORKING IN CLOSE PROXIMITY TO EXISTING WATERLINES
 - TREE REMOVAL & DISPOSAL
 - TREE ROOT PROTECTION

- EROSION AND SEDIMENT CONTROL MEASURES**
- (SF) SILT FENCE VA ESCH STD. 3.05
 - (PS) PERMANENT SEEDING, VA ESCH STD. 3.32

SPECIFIC ISSUES TO MS-16:

- NO MORE THAN 500 LINEAR FEET OF TRENCH MAY BE OPEN AT ONE TIME. THE ENTIRE PROJECT IS 545 LF OF TRENCH. THE CONTRACTOR SHALL PROVIDE OSHA MINIMUM REQUIREMENTS PERTAINING TO OPEN TRENCHES ADJACENT TO ACTIVE AREAS AT THE END OF EACH DAY.
- EXCAVATED MATERIALS SHALL BE PLACED ON THE UPHILL SIDE OF TRENCHES WHEN POSSIBLE.
- EFFLUENT FROM DEWATERING OPERATIONS SHALL BE FILTERED OR PASSED THROUGH AN APPROVED SEDIMENT TRAPPING DEVICE, OR BOTH, AND DISCHARGED IN A MANNER THAT DOES NOT ADVERSELY AFFECT FLOWING STREAMS OR OFF-SITE PROPERTY.
- MATERIAL USED FOR BACKFILLING TRENCHES SHALL BE PROPERLY COMPACTED IN ORDER TO MINIMIZE EROSION & PROMOTE STABILIZATION.
- APPLICABLE SAFETY REGULATIONS SHALL BE COMPLIED WITH.



parker DESIGN GROUP
ENGINEERS • SURVEYORS • PLANNERS • LANDSCAPE ARCHITECTS

816 Boulevard
Salem, Virginia 24153
Phone: 540-387-1153
Fax: 540-389-5767
www.parkerdgd.com

These documents are the property of Parker Design Group (PDG) and may not be reproduced or used without the express permission of PDG. Any reuse of these documents without the authorization of PDG will be at the sole risk of the individual or entity utilizing said documents.

PAUL J. BROWN
Lic. No. 036148
10/28/2009
PROFESSIONAL ENGINEER

Cherokee Hills (4900 Bk)
Sewer Extension
CIVIL/SITEWORK PLAN

Rev	Description	Date	By
1	FIELD REV. - ADD 16" REDESIGN SLOPES	10/28/09	PJB
2	LATERAL REVISION PER WVWA	07/09/09	PJB
3	REVISION PER WVWA	07/02/09	DRB

Designed: DRB/PJB
Drawn: DRB
Checked: PJB
Approved:
Date: 2 JULY 2009
Project: 09-0110-01

C1
Sheet 1 of 1

As-Built 12.4.09 K. Winslow