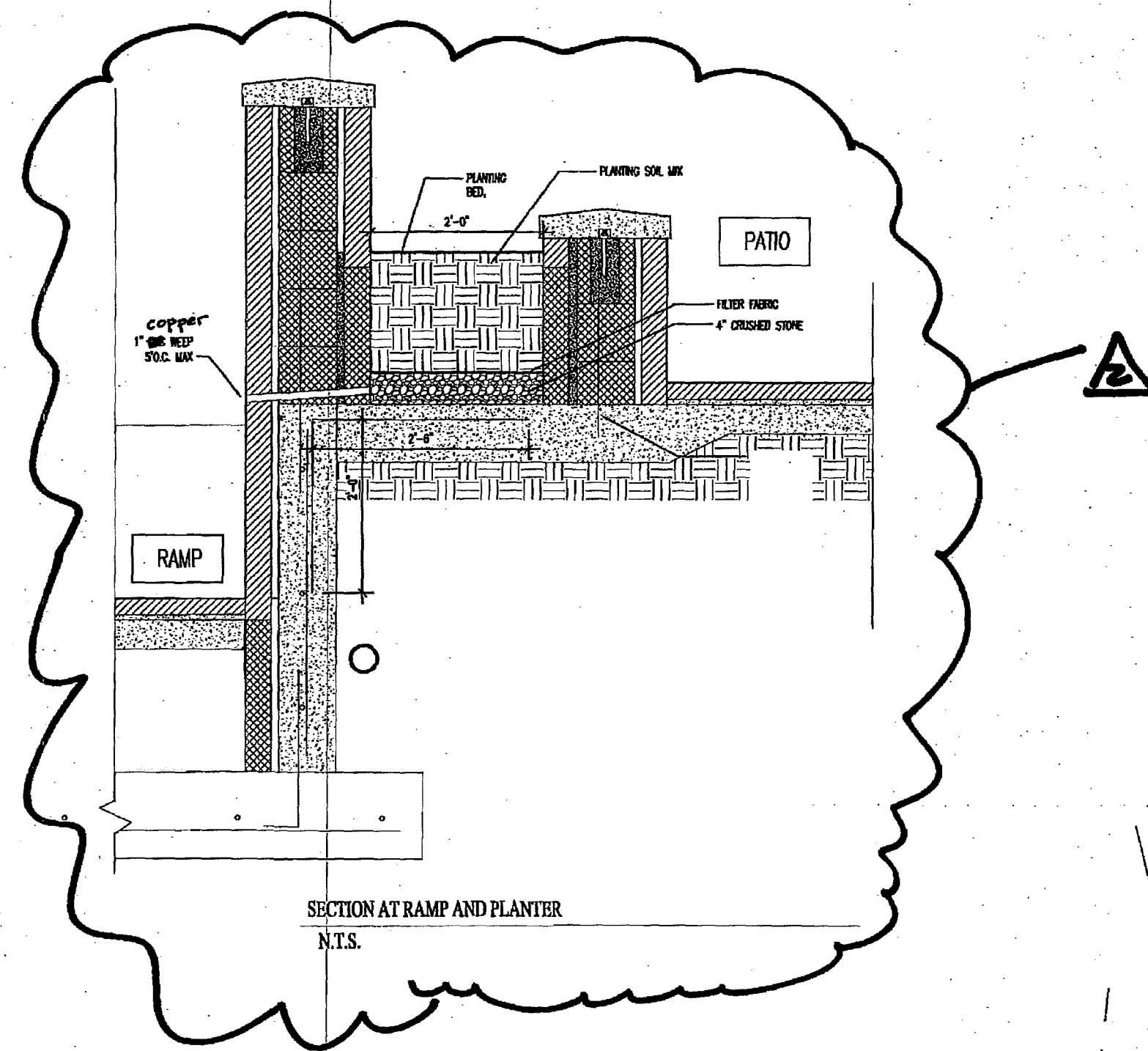


EROSION AND SEDIMENT CONTROL PRACTICES Virginia Uniform Coding System

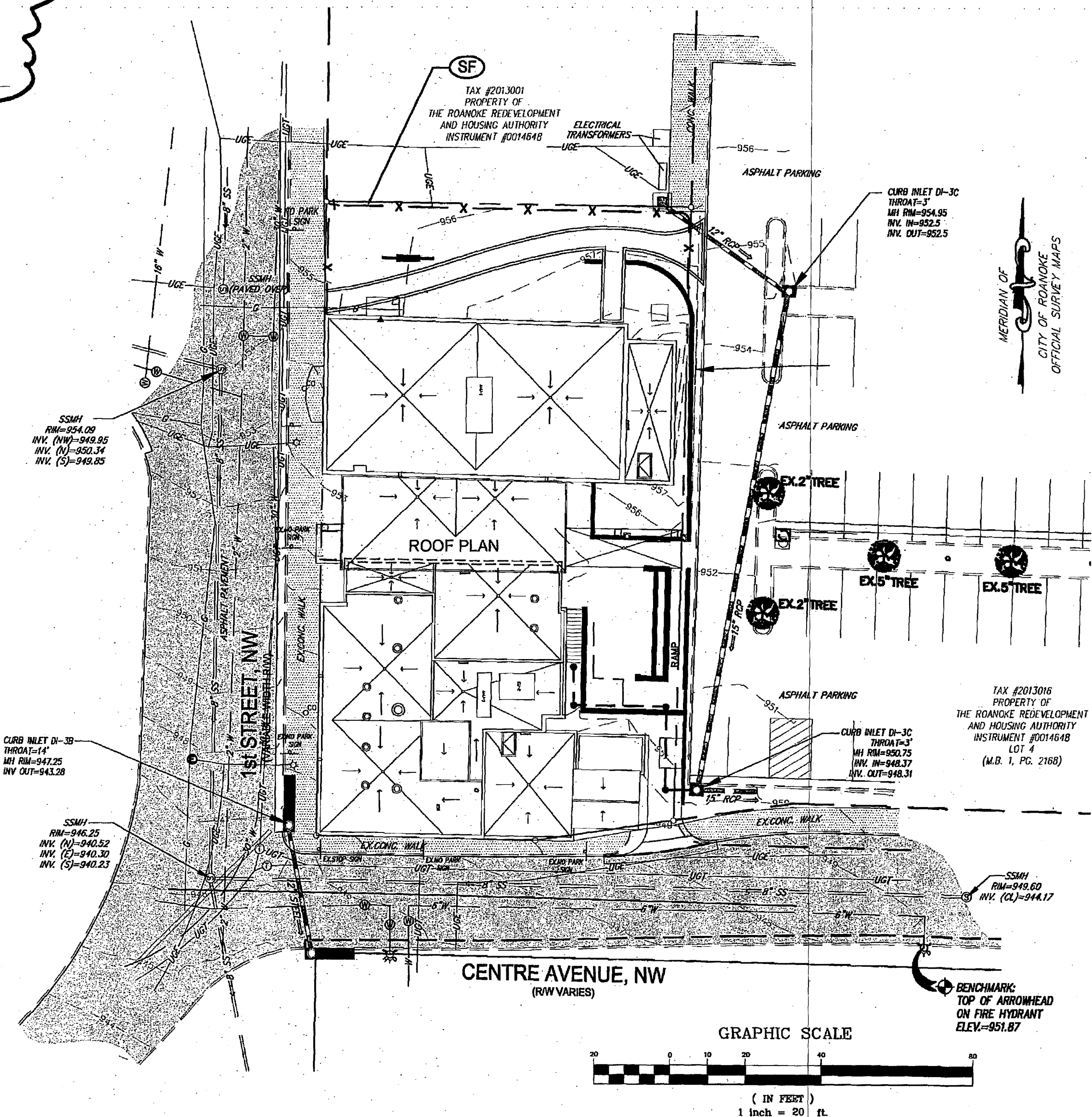
SF	3.05	SILT FENCE
IP	3.07	STORM DRAIN INLET PROTECTION

EROSION CONTROL NARRATIVE

- PHASE ONE**
- PRIOR TO BEGINNING CONSTRUCTION, AN ON-SITE PRE-CONSTRUCTION MEETING SHALL BE HELD. CITY OFFICIALS, THE ENGINEER, AND CONTRACTOR MUST ATTEND. APPROPRIATE CITY OFFICIALS MUST RECEIVE 48 HOURS NOTICE TO SCHEDULE MEETING.
 - THE CONTRACTOR TO NOTIFY THE CITY ENGINEER OFFICE 48 HOURS PRIOR TO COMMENCING WITH THE LAND DISTURBANCE ACTIVITIES.
 - INSTALL SILT FENCE AS SHOWN ON THE PLAN. NO LAND DISTURBANCE OUTSIDE THE PRELIMINARY LIMITS OF DISTURBANCE CAN OCCUR UNTIL THE INITIAL ESC MEASURES INSTALLATION HAS BEEN APPROVED BY THE ENVIRONMENTAL INSPECTOR.
- PHASE TWO**
- COMMENCE CUT AND FILL OPERATIONS.
 - INSTALL DRAINAGE STRUCTURES. THESE STRUCTURES SHALL BE PLACED IN ACCORDANCE WITH V.D.O.T. STANDARDS & SPECIFICATIONS.
 - INSTALL INLET PROTECTION AS SHOWN ON THE PLAN.
 - BEGIN BUILDING CONSTRUCTION/RENOVATION.
 - COMPLETE ALL EARTHWORK TO SUBGRADE ELEVATIONS. PLACE BASE MATERIAL.
 - PLACE TOPSOIL. SEED ALL EARTH AREAS PROMPTLY.
 - ALL VEGETATIVE AND STRUCTURAL EROSION AND SEDIMENT CONTROL PRACTICES SHALL BE CONSTRUCTED AND MAINTAINED ACCORDING TO UNITED STATES ENVIRONMENTAL PROTECTION AGENCY (EPA) DOCUMENT NO. 832/R-92-005 (SEPTEMBER 1992), STORM WATER MANAGEMENT FOR CONSTRUCTION ACTIVITIES, CHAPTER 3.
 - ALL DISTURBED AREAS ARE TO DRAIN TO APPROVED SEDIMENT MEASURES AT ALL TIMES DURING LAND DISTURBING ACTIVITIES AND DURING SITE DEVELOPMENT UNTIL FINAL STABILIZATION IS ACHIEVED.
 - NO DISTURBED AREAS SHALL REMAIN DENuded FOR MORE THAN 7 DAYS. THOSE AREAS BROUGHT TO FINISHED GRADE SHALL BE STABILIZED BY TOPSOILING, PERMANENT SEEDING AND MULCHING WITHIN 7 DAYS OF REACHING FINISHED GRADE, IF NOT TO BE STABILIZED BY OTHER MEANS. THOSE AREAS NOT BROUGHT TO FINISHED GRADE SHALL BE STABILIZED BY TEMPORARY SEEDING IF THEY ARE TO REMAIN DORANT FOR MORE THAN 30 DAYS.
 - THE CONTRACTOR SHALL INSPECT ALL EROSION CONTROL MEASURES PERIODICALLY AND AFTER EACH RUNOFF PRODUCING RAINFALL EVENT. ANY NECESSARY REPAIRS OR CLEANUP TO MAINTAIN THE EFFECTIVENESS OF THE EROSION CONTROL DEVICES SHALL BE MADE IMMEDIATELY.
 - THE CONTRACTOR IS RESPONSIBLE FOR THE INSTALLATION OF ANY ADDITIONAL EROSION CONTROL MEASURES NECESSARY TO PREVENT EROSION AND SEDIMENTATION AS DETERMINED BY THE ENVIRONMENTAL ENGINEERING DEPARTMENT.
 - UPON COMPLETION OF THE PROJECT AND APPROVAL BY THE PROJECT ENGINEER AND LOCAL CITY OFFICIALS THE AREA MUST BE RESTORED TO ITS ORIGINAL CONDITION. ALL SILT FENCES ARE TO BE REMOVED FROM THE SITE UNLESS OTHERWISE DIRECTED BY THE PROJECT ENGINEER OR LOCAL CITY OFFICIAL.
 - NO EROSION AND SEDIMENT CONTROL MEASURES CAN BE REMOVED WITHOUT APPROVAL FROM THE ENVIRONMENTAL INSPECTOR FOR THE PROJECT.



EROSION CONTROL PLAN



SmithLewis
ARCHITECTURE

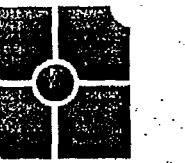
18 W. Kirk Avenue SW
Roanoke, VA 24011
540 343 5500
540 343 2003

STAENGL
ENGINEERING

300 W Main Street, Suite 302
Charlottesville, VA 22903
434 295 8105
434 295 5557

MANN & ASSOCIATES, INC.

306 Market Street
Roanoke, Virginia 24011
Voice: 540 344 5513
Fax: 540 343 0235



PARKER DESIGN GROUP, PC
ENGINEERS PLANNERS SURVEYORS

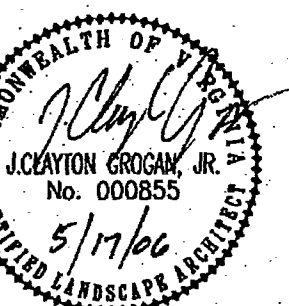
816 Boulevard
Salem, Virginia 24153
Phone: 540 387 1153
Fax: 540 389 5767

RMS
ENGINEERING LLC

1260 West Riverside Drive
Salem, Virginia 24153
(540) 375-6750 (fax)
(540) 375-6751 (fax)
www.rms-engineering.com

DAY & KINDER
CONSULTING
ENGINEERS, PLLC

P.O. BOX 20187
3239 ELECTRIC ROAD, BUILDING C
ROANOKE, VIRGINIA 24018
PHONE: 540 774-5706
FAX: 540 772-3266
COMM. NO. 05-062



FINAL CONSTRUCTION
DOCUMENTS

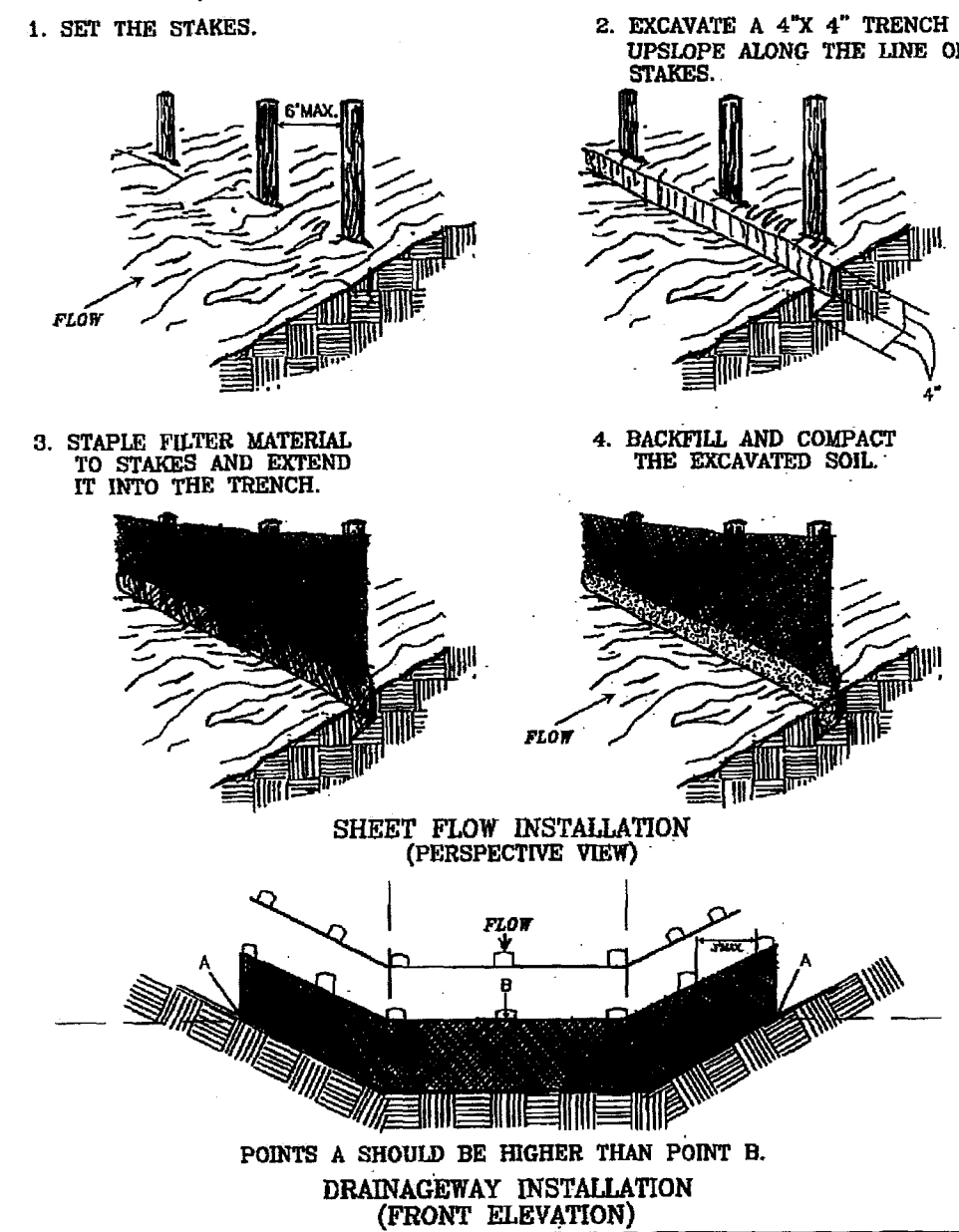
Claude Moore
Education Complex
First Street
Roanoke, VA 24011

EROSION & SEDIMENT
CONTROL PLAN

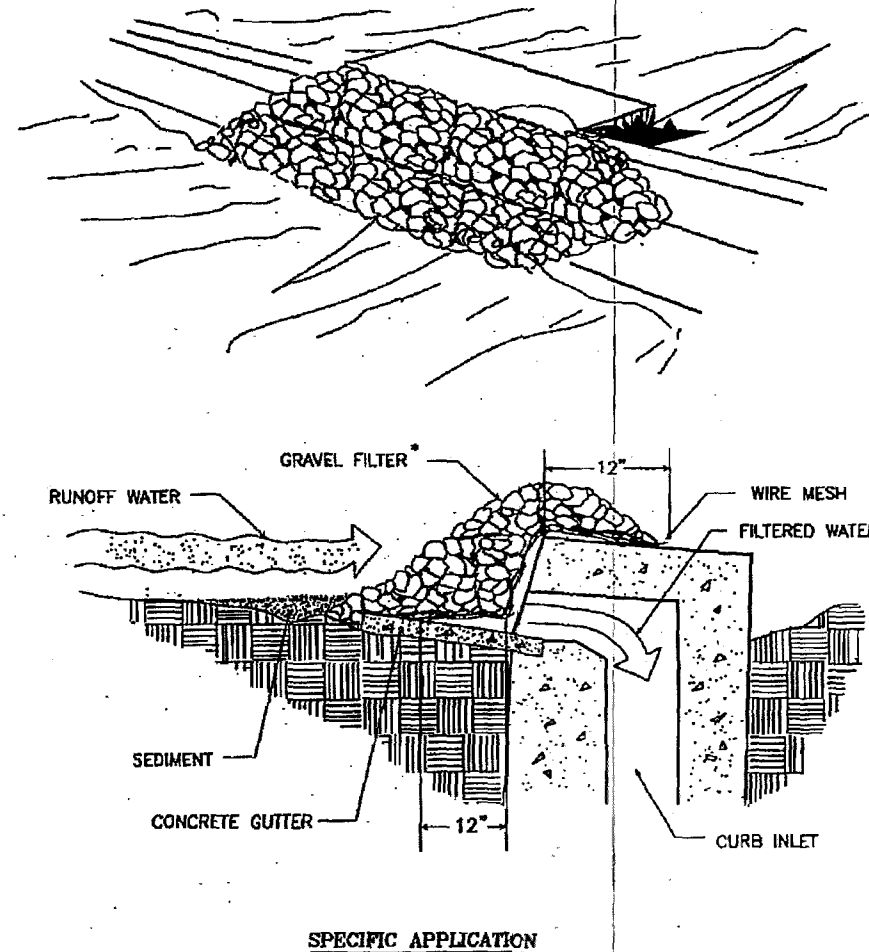
PROJECT NUMBER: 051011
ISSUED: 05-17-06
DRAWN BY: JCG
CHECKED BY: GL
FILENAME: D:\G PNE: 505002-0

C04

CONSTRUCTION OF A SILT FENCE (WITHOUT WIRE SUPPORT)



GRAVEL CURB INLET SEDIMENT FILTER



THIS METHOD OF INLET PROTECTION IS APPLICABLE AT CURB INLETS WHERE PONDING IN FRONT OF THE STRUCTURE IS NOT LIKELY TO CAUSE INCONVENIENCE OR DAMAGE TO ADJACENT STRUCTURES AND UNPROTECTED AREAS.

* GRAVEL SHALL BE VDOT #3, #357 OR 5 COARSE AGGREGATE.

SOURCE: Adapted from Installation of Straw and Fabric Filter Barriers for Sediment Control, VA. DSWC Sherwood and Wynn

PLATE 3.05-2 SOURCE: VA. DSWC

PLATE 3.07-6