

SANITARY SEWER CONNECTION:
THE CONTRACTOR/DEVELOPER IS RESPONSIBLE FOR THE MANHOLE CORE TO EXISTING MANHOLE AND THE WWMA INSPECTOR NEEDS TO BE CONTACTED PRIOR TO CORE DRILLING THE EX. MANHOLE. THE CONNECTION SHALL HAVE A FLEXIBLE BOOT INSTALLED AT THE CONNECTION POINT.

Ex. s.s.m.h.
Ex. Top = 1040.90
~~NEW TOP = 1041.50~~
Inv. In = 1032.96
Inv. Out = 1032.36

UTILITY SEPARATION NOTE:
THE CONTRACTOR/DEVELOPER SHALL MAINTAIN A MINIMUM OF 18" SEPARATION BETWEEN THE EXISTING UTILITIES AND PROPOSED SANITARY SEWER MAIN. IF THIS CANNOT BE ACHIEVED THEN ADDITIONAL MEASURES MAY BE REQUIRED IN THE FIELD WITH OWNER, CONTRACTOR, PROJECT ENGINEER, AND WWMA REVIEW/APPROVAL.

SANITARY SEWER PROFILE (A-EX.)

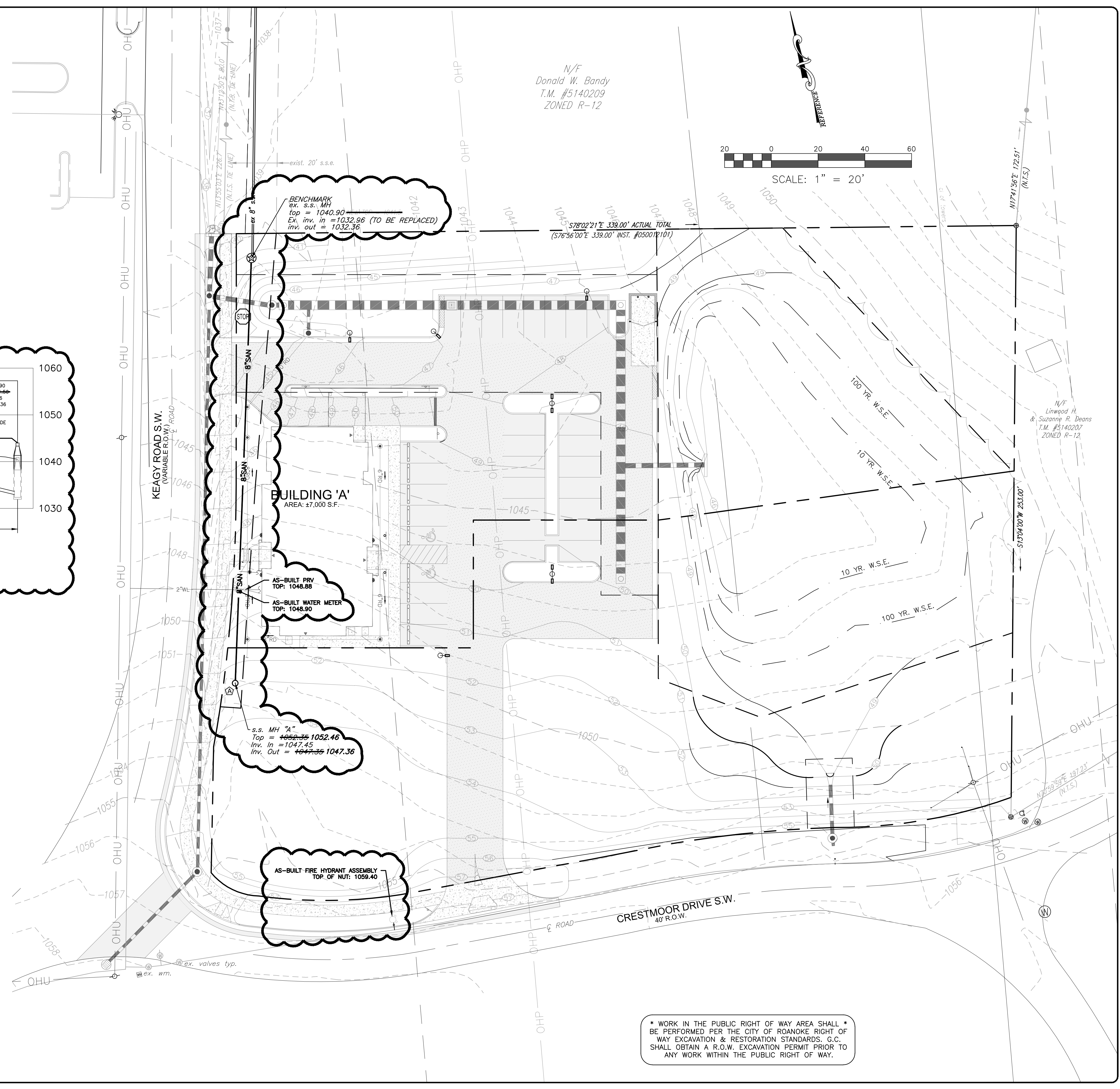
1"=30' HORIZONTAL
1"=10' VERTICAL

NOTE: G.C. TO PROVIDE NECESSARY TRENCH BOXES FOR CONSTRUCTION AND COMPLY WITH ALL OSHA STANDARDS AND PROCEDURES

SANITARY SEWER SCHEDULE:

(EX)	S.S. MH W/ STANDARD LID EX. TOP=1040.90 NEW TOP = 1041.50 INV. IN=1032.96 INV. OUT=1032.36
(EX) (A)	179 100 LF OF 8" SDR-35 PVC PIPE AT MINIMUM SLOPE OF 7.91% 8.04%
(A)	S.S. MH W/ STANDARD LID TOP= 1052.36 1052.46 INV. IN=1047.45 INV. OUT= 1047.36 1047.36

(G.C. TO CONFIRM & COORDINATE ALL TIE IN LOCATIONS W/M.E.P. & ARCH.
DRAWINGS PRIOR TO ANY INTERIOR OR EXTERIOR S.S. PIPE BEING INSTALLED.
NOTIFY ENGINEER IMMEDIATELY IF DISCREPANCIES ARE DISCOVERED PRIOR TO ANY



* WORK IN THE PUBLIC RIGHT OF WAY AREA SHALL *
BE PERFORMED PER THE CITY OF ROANOKE RIGHT OF
WAY EXCAVATION & RESTORATION STANDARDS. G.C.
SHALL OBTAIN A R.O.W. EXCAVATION PERMIT PRIOR TO
ANY WORK WITHIN THE PUBLIC RIGHT OF WAY.