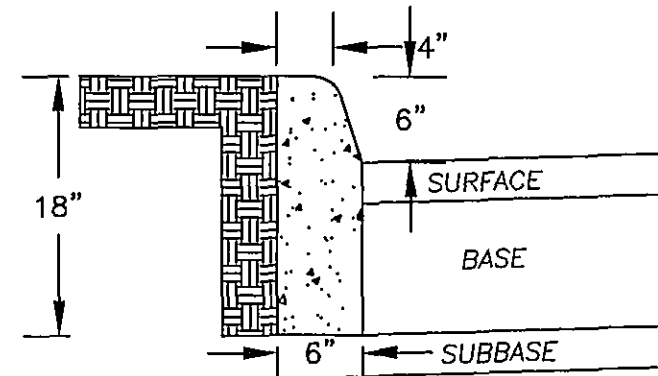


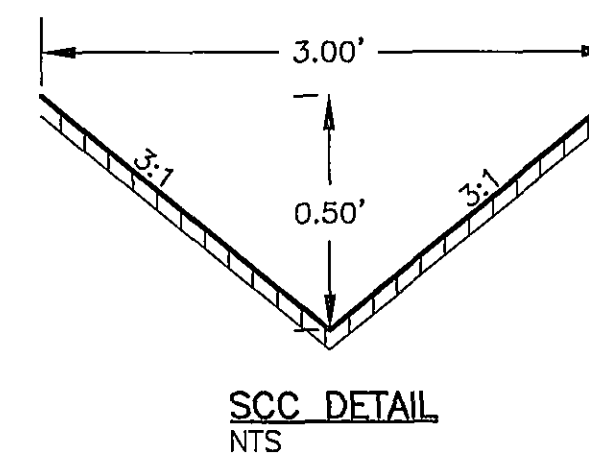
NOTE:  
1. THE PAVEMENT DESIGNS SHOWN ARE BASED ON A SUBGRADE RATING OF CBR 10 OR GREATER. THE SUBGRADE SOIL IS TO BE TESTED BY A GEOTECHNICAL ENGINEER AND THE RESULTS SUBMITTED TO THE ENGINEER PRIOR TO PAVEMENT CONSTRUCTION. SHOULD THE CBR VALUES BE LESS THAN CBR 10, THEN ADDITIONAL BASE MATERIAL AND/OR ASPHALT WILL BE REQUIRED AS RECOMMENDED BY THE GEOTECHNICAL ENGINEER.  
2. THE SUBGRADE MUST BE APPROVED BY THE GEOTECHNICAL ENGINEER PRIOR TO PLACEMENT OF BASE MATERIAL. BASE MUST BE APPROVED BY THE ENGINEER FOR DEPTH, TEMPLATE, AND COMPACTION BEFORE SURFACE IS APPLIED.



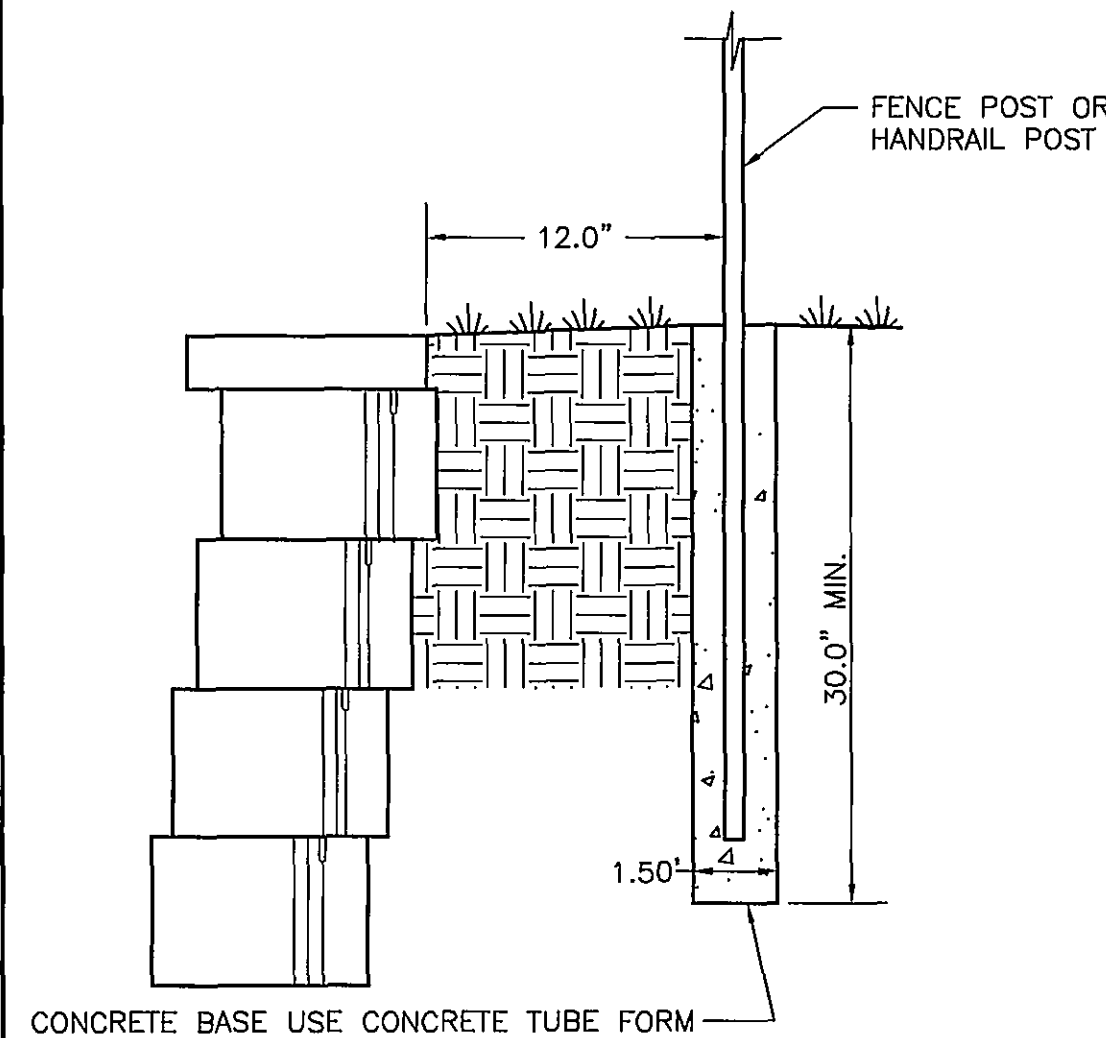
THIS ITEM SHALL BE CAST IN PLACE.  
CONCRETE TO BE VDOT CLASS A3.

THE DEPTH OF CURB MAY BE REDUCED AS MUCH AS 3" (15" DEPTH) OR INCREASED AS MUCH AS 3" (21" DEPTH) IN ORDER THAT THE BOTTOM OF CURB WILL COINCIDE WITH THE TOP OF A COURSE OF THE PAVEMENT SUBSTRUCTURE. OTHERWISE, THE DEPTH IS TO BE 18" AS SHOWN. NO ADJUSTMENT IN THE PRICE BID IS TO BE MADE FOR A DECREASE OR INCREASE IN DEPTH.

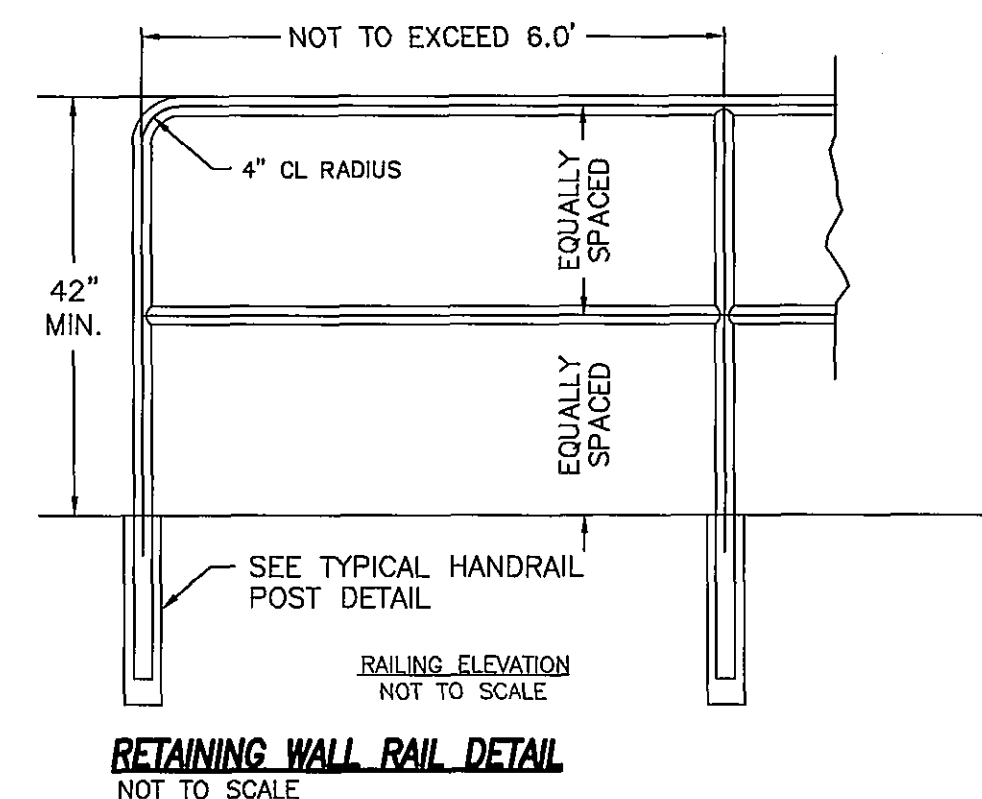
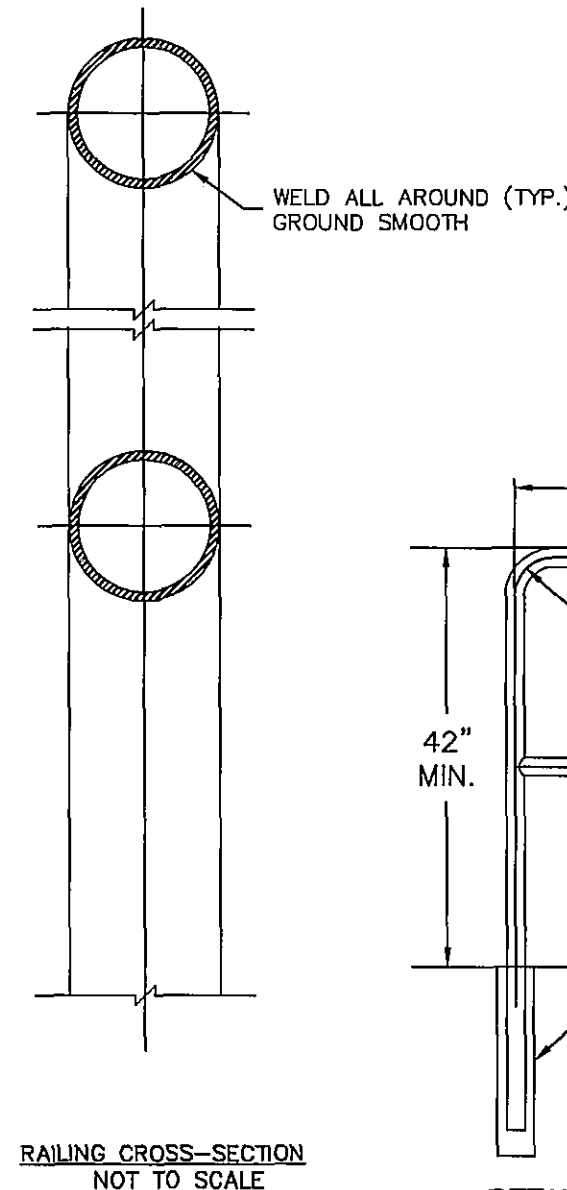
**CG-2 CURB**  
NOT TO SCALE



DEMOLITION NOTE:  
1. SAW CUT EDGE OF EXISTING PAVEMENT TO PROVIDE A SMOOTH TRANSITION FROM EXISTING TO PROPOSED PAVEMENT.  
2. SANDBLAST EXISTING STALL STRIPES PRIOR TO RE-STRIPE.



**TYPICAL HANDRAIL POST DETAIL**  
SCALE: NTS



NOTE: RAIL MATERIAL SHALL BE 1 1/2" WELDED TUBULAR STEEL - COLOR TO BE SELECTED BY THE ARCHITECT.

