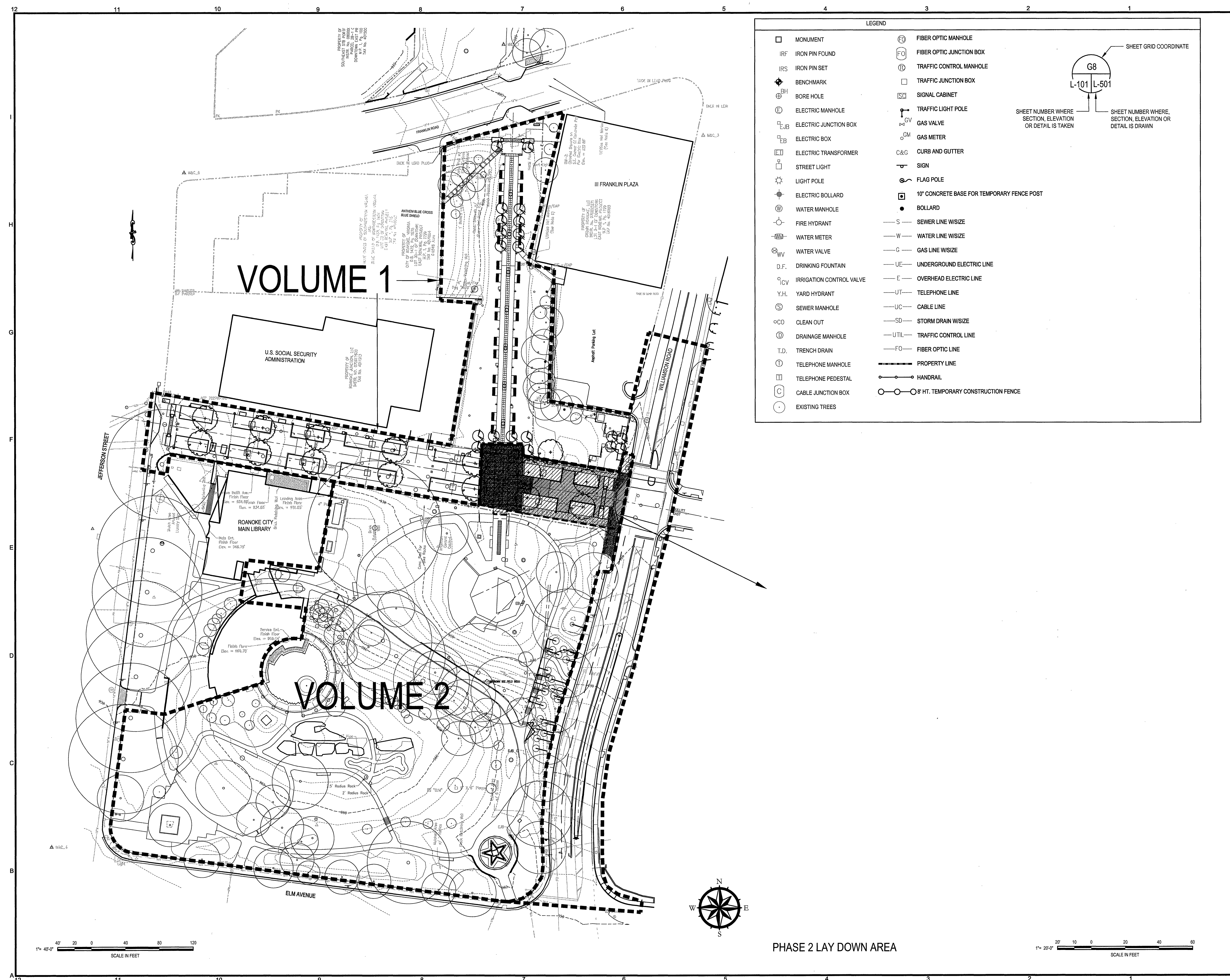


8/17/2012 9:54:53 AM  
 Y:\2011\1133.01 Elwood Park, Steven\CODE 5 - Work Produced\LANDSCAPE\01 -\Plan-L-101-20-Scaling.dwg  
 c:\ahg\msh\



**HILL STUDIO**  
 Landscape Architecture  
 Architecture  
 Community Planning  
 Historic Preservation  
 120 W. Campbell Ave. SW  
 Roanoke, VA 24011  
 tel: 540-342-5263 fax: 540-345-5625  
 www.hillstudio.com

**ELMWOOD PARK IMPROVEMENTS VOLUME ONE ROANOKE VIRGINIA**

**Mattern & Craig**  
 CONSULTING ENGINEERS & ARCHITECTS  
 501 EAST STREET, S.W.  
 ROANOKE, VIRGINIA 24002  
 TEL: (540) 940-1941

**The 1717 Design Group, Inc.**

Title:  
**SHEET LAYOUT  
 LEGEND, KEY PLAN  
 VOLUME ONE**

Date: 8/19/12

Revisions:

Drawn By:

Review By: DP4, GW, CC  
 Project No. 1133.01

Sheet No.

**G-000**