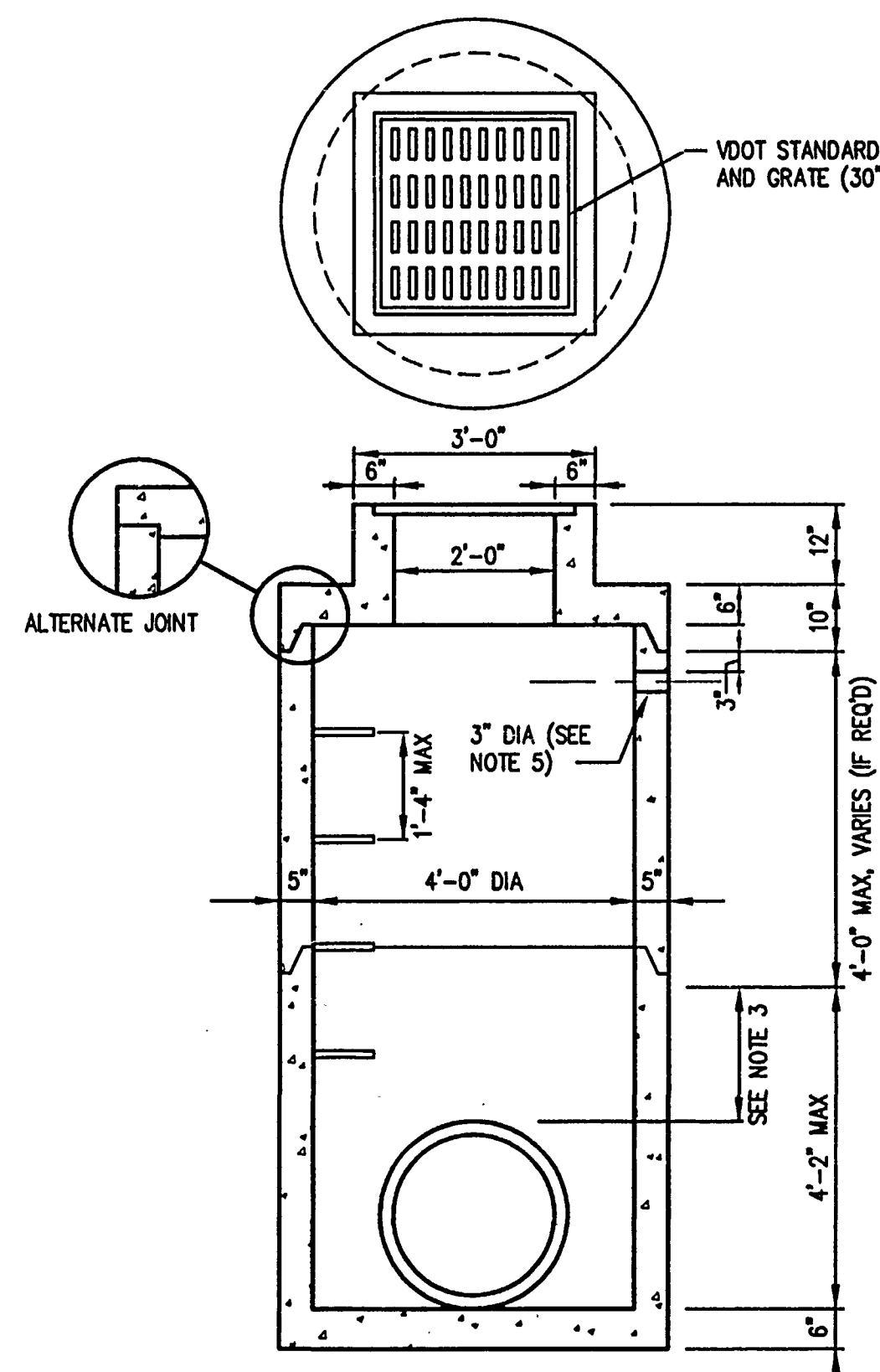
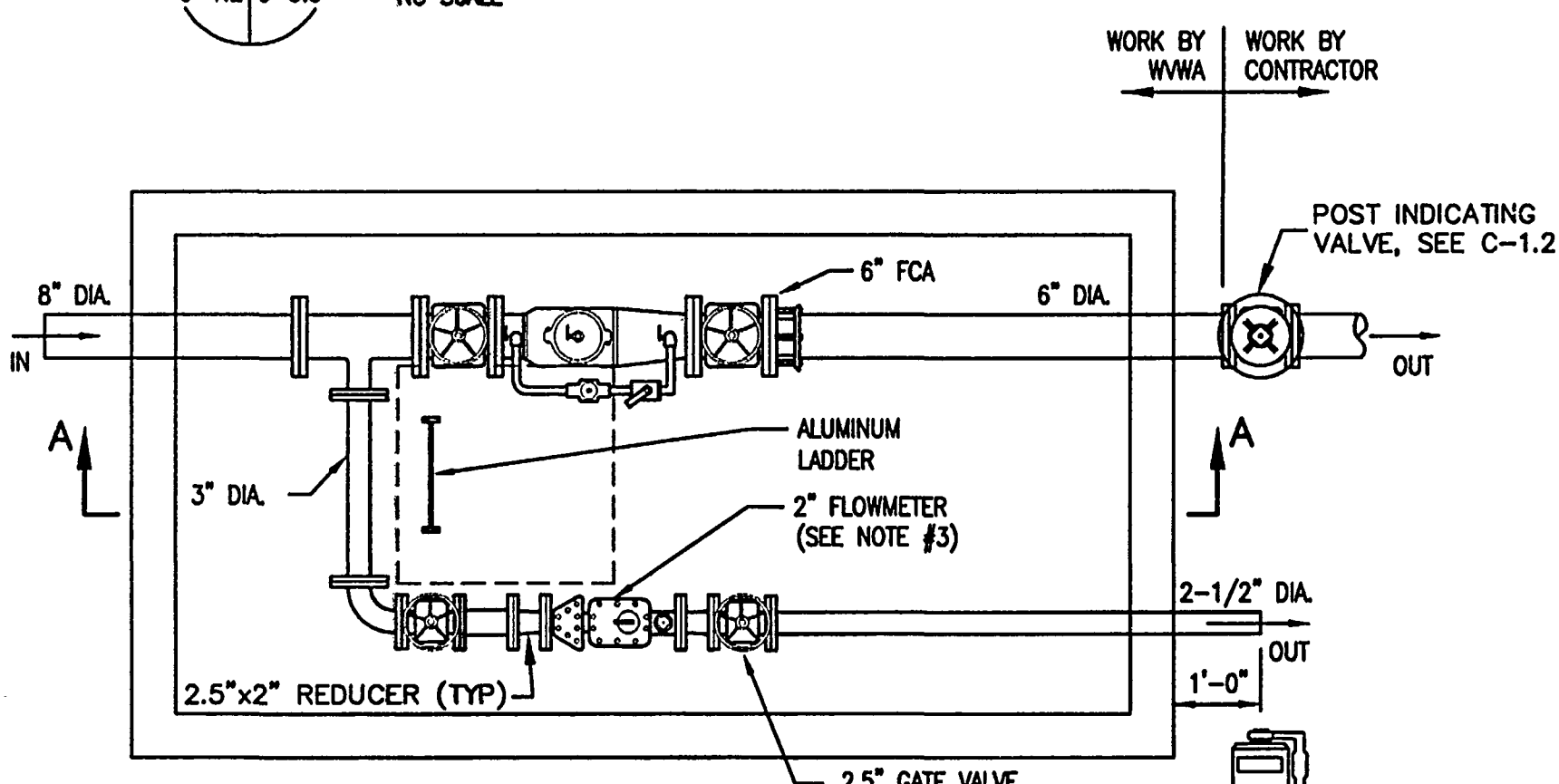


24
C-1.2 C-5.3
NO SCALE
TRENCH DRAIN DETAIL

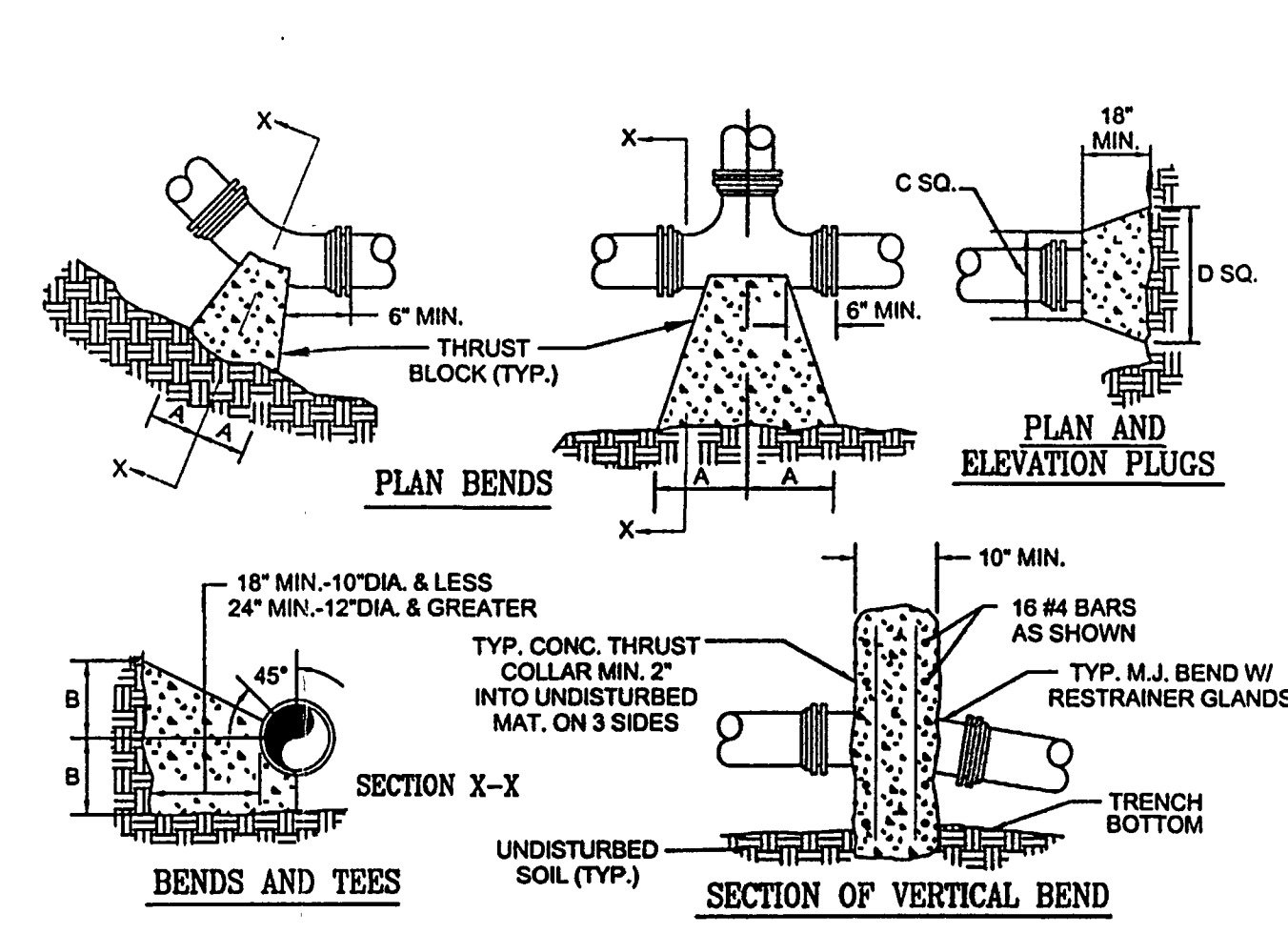


26
C-1.3 C-5.3
NO SCALE
MODIFIED 48" DIA DI-1 DROP INLET

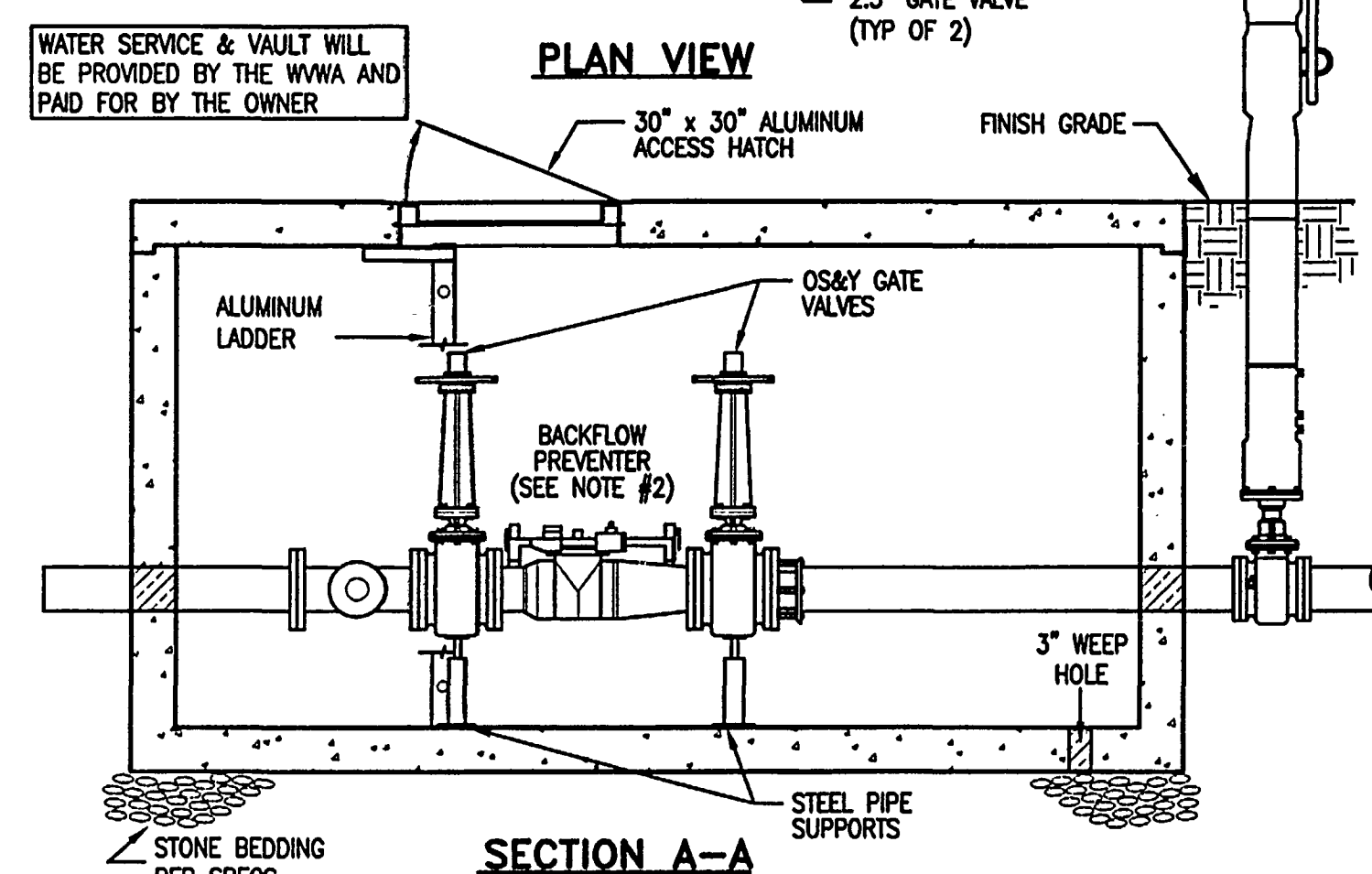
- NOTES:
- 4000 PSI CONCRETE.
 - MANHOLE SHALL MEET ASTM C478.
 - WHEN LESS THAN 8", THERE IS CONTINUOUS CIRCUMFERENTIAL REINFORCING STEEL ABOVE PIPE OPENING.
 - REFER TO CONTRACT DOCUMENTS FOR PIPE SIZES, LOCATIONS, AND ELEVATIONS.
 - 3" DIA WEEP HOLE TO BE PROVIDED IN FIRST RISER SECTION WHEN SUBSURFACE DRAINAGE IS REQUIRED.
 - REINFORCING STEEL PER ASTM C478; AASHTO M-199, VDOT STANDARD FOR SPACING AND LOCATION.
 - STRUCTURE HAS BEEN APPROVED FOR H-20 LOADING.



21
C-1.2 C-5.3
NO SCALE
WVWA TRENCH DETAIL

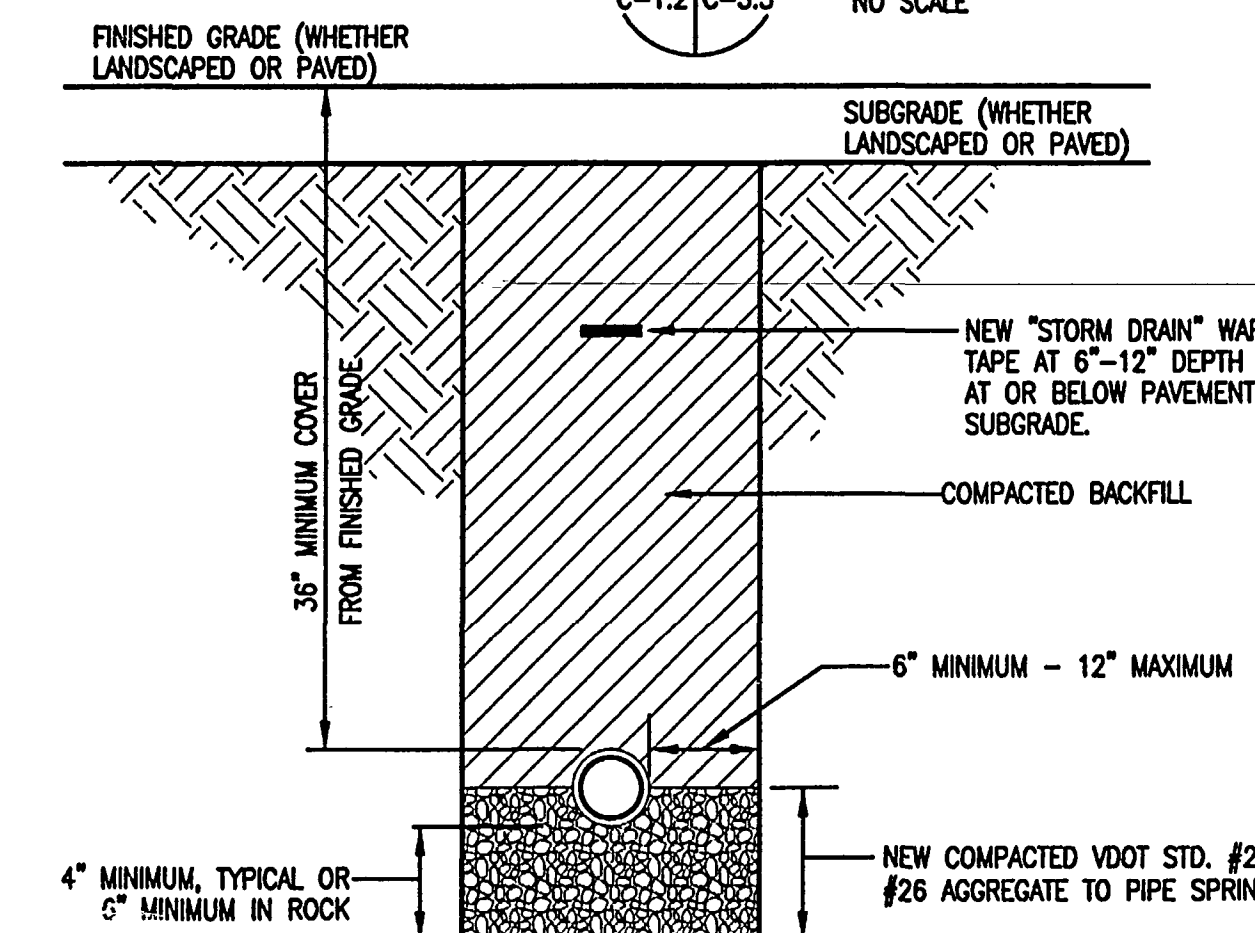


19
C-1.2 C-5.3
NO SCALE
WVWA THRUST BLOCK DETAIL



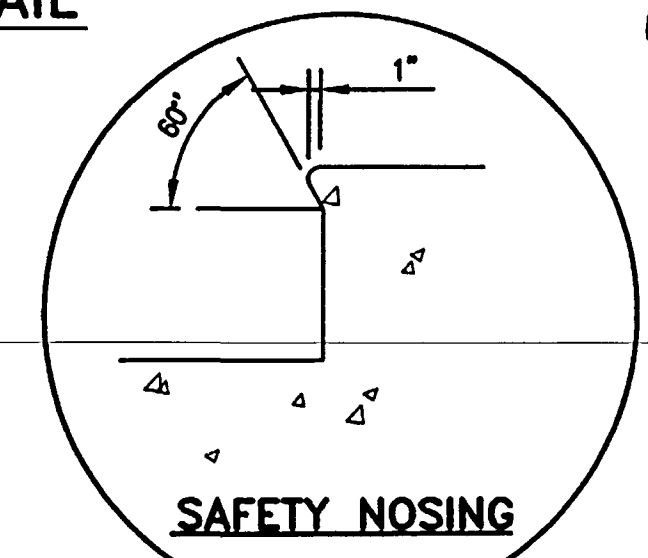
25
C-1.2 C-5.3
NO SCALE
WATER SERVICE VAULT (NIC)

- NOTES:
- VAULT SHIPPED PRE-ASSEMBLED IF AVAILABLE.
 - AMES 3000s DOUBLE CHECK DETECTOR FIRE ASSEMBLY.
 - SENSUS MODEL 350-DRS 2" TURBO-METER WITH STRAINER.

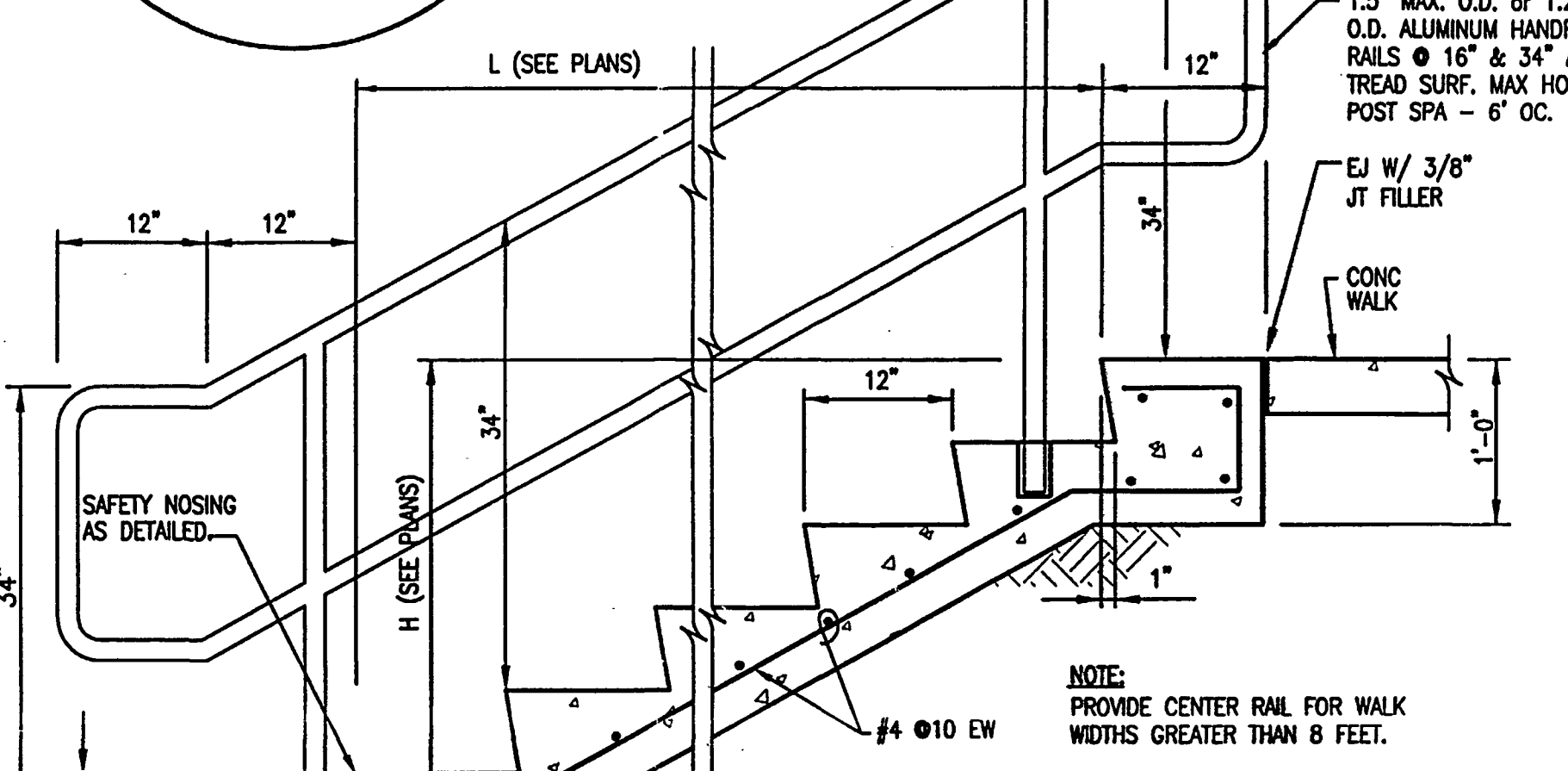


22
C-1.3 C-5.3
NO SCALE
NEW STORM LINE TRENCH SECTION

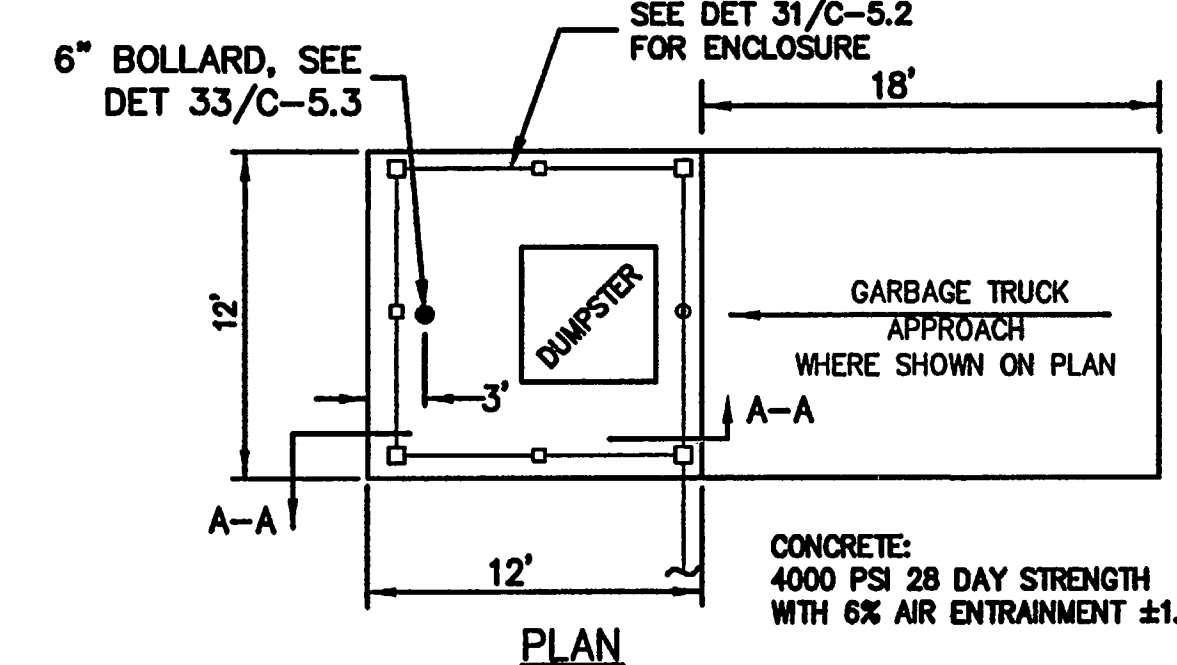
UNLESS DEFINED ELSEWHERE BY SPECS (BOUND OR ON PLAN SHEETS), BACKFILL AND SELECT BACKFILL SHALL BE AS APPROVED BY THE GEOTECHNICAL ENGINEER.



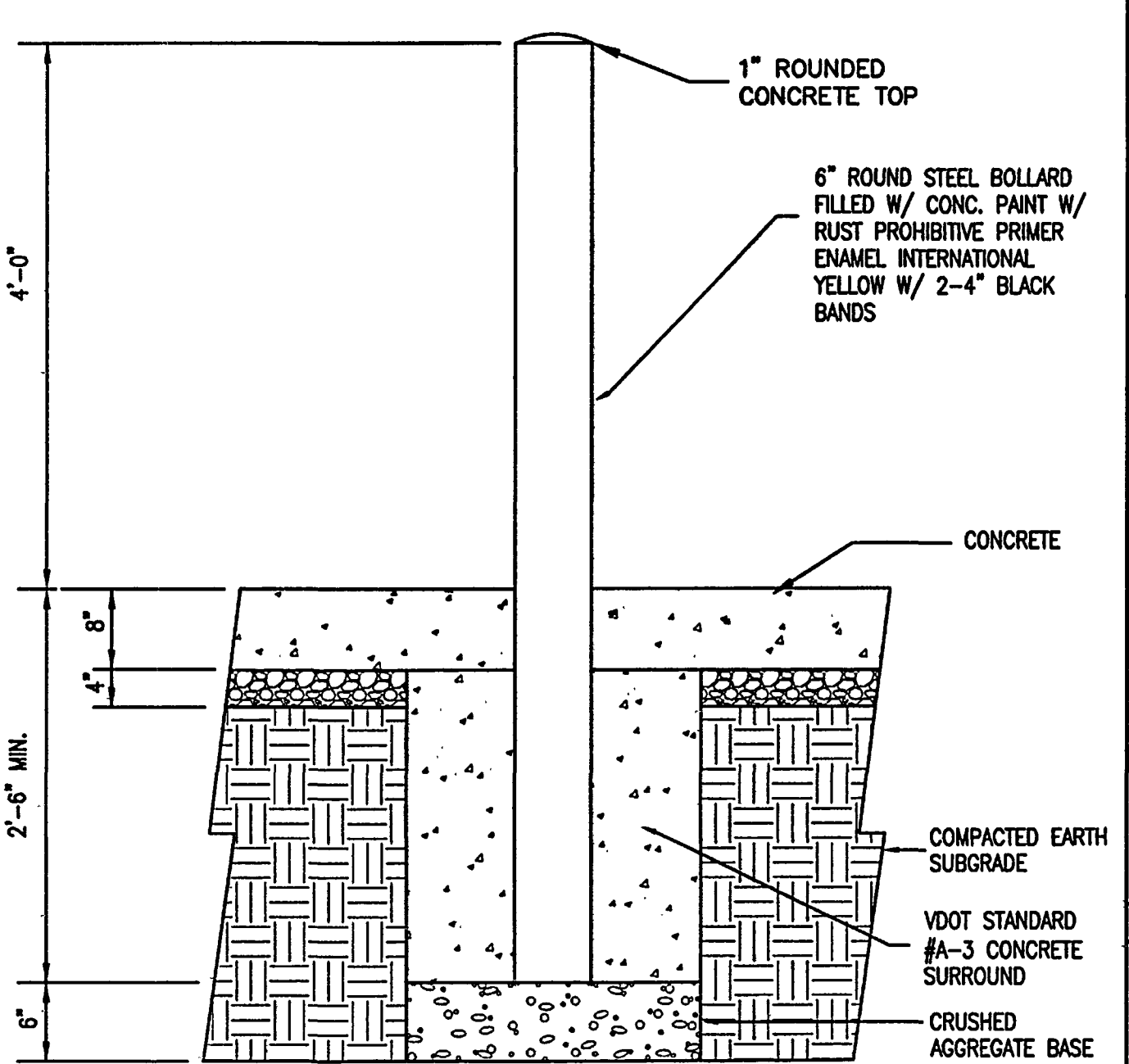
SAFETY NOSING



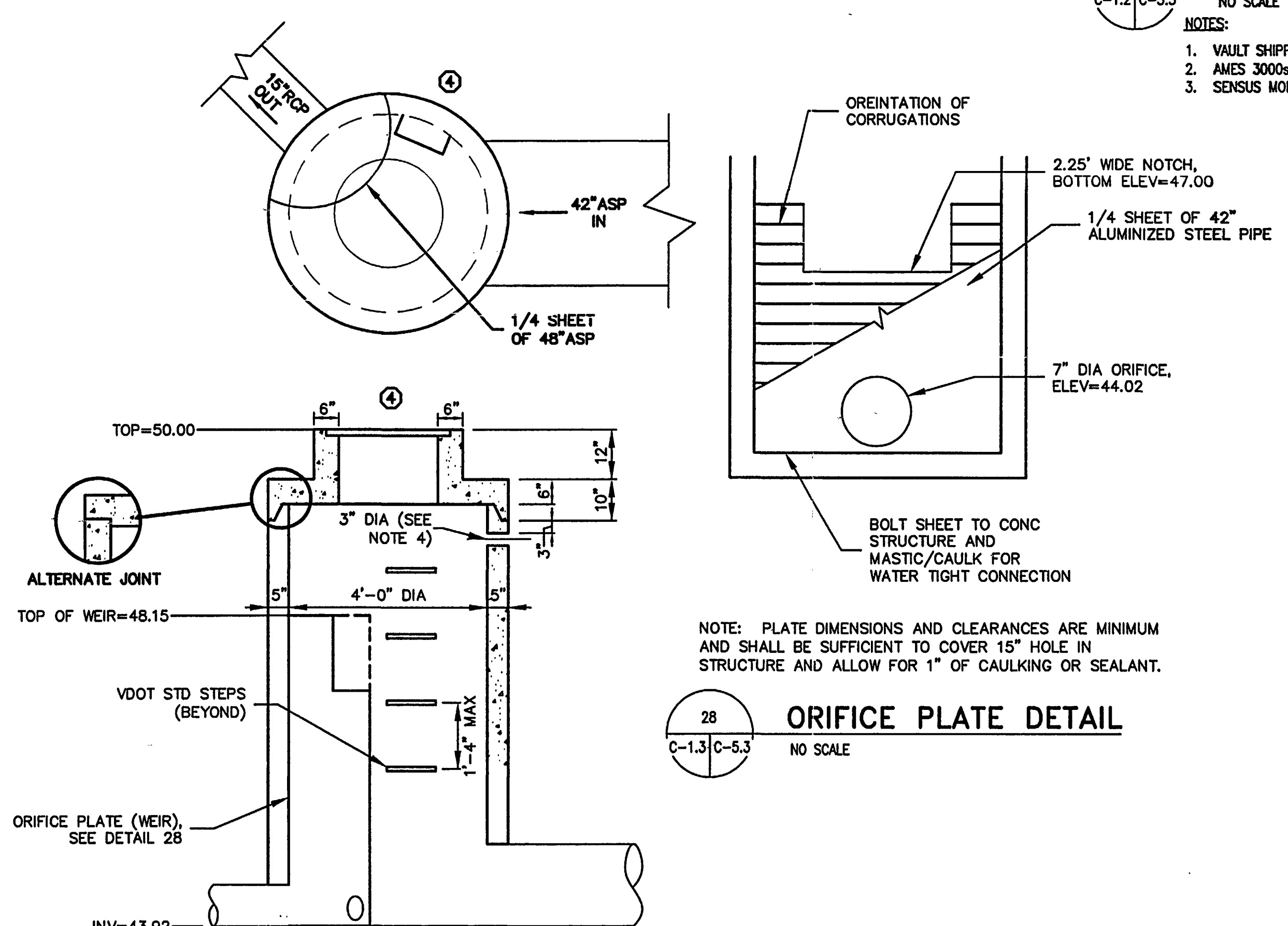
20
C-1.2 C-5.3
NO SCALE
CONCRETE STAIRS



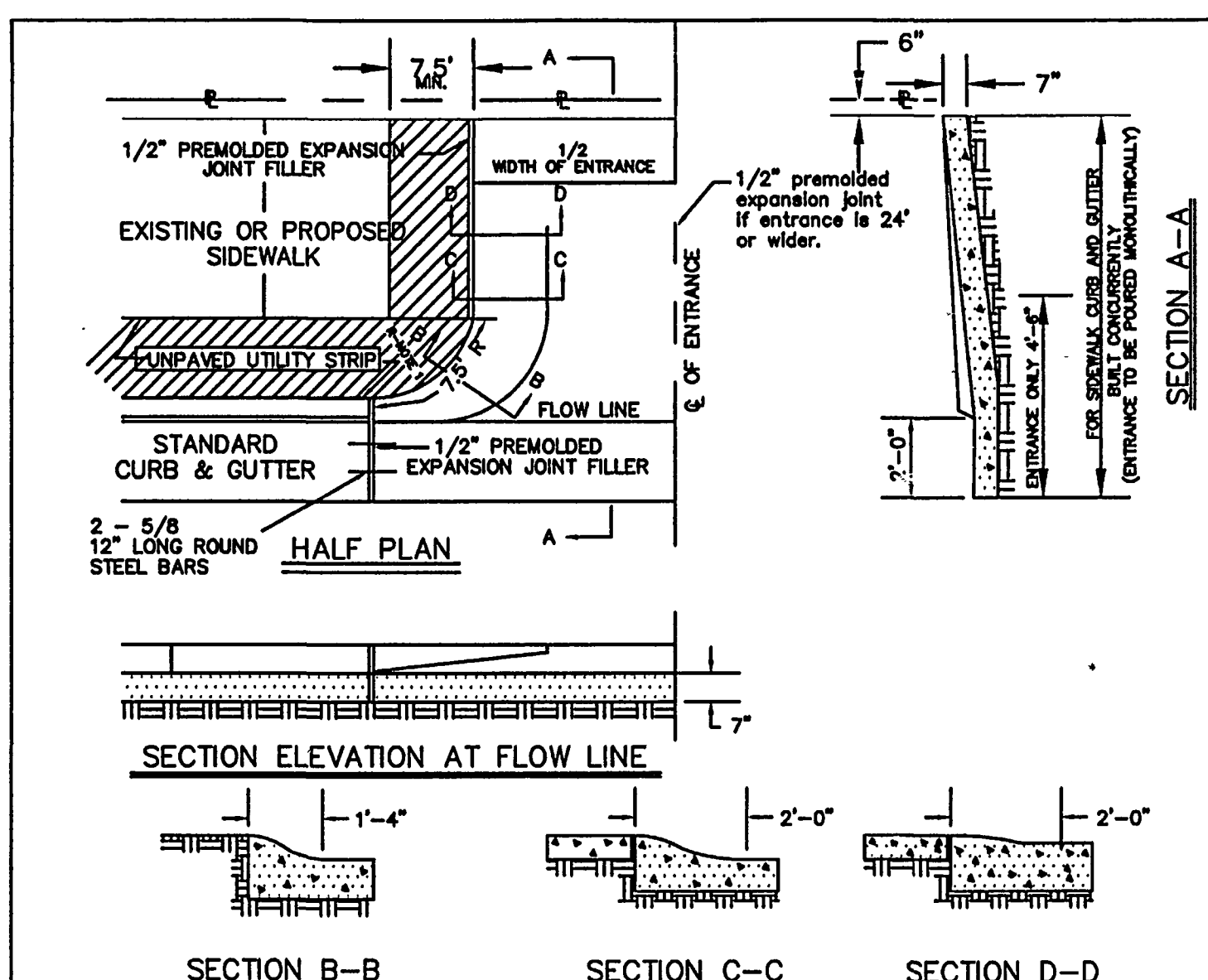
23
C-1.2 C-5.3
NO SCALE
DUMPSTER PAD DETAIL



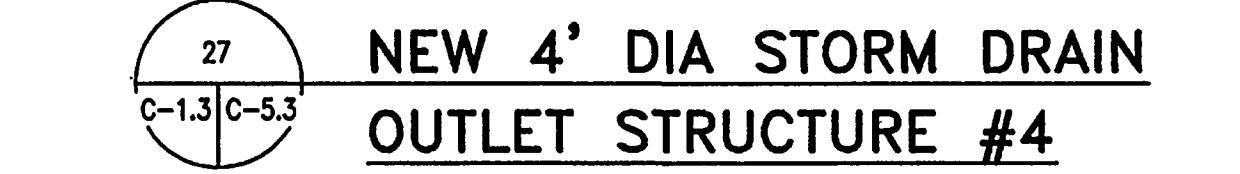
33
C-5.3 C-5.3
NO SCALE
BOLLARD DETAIL



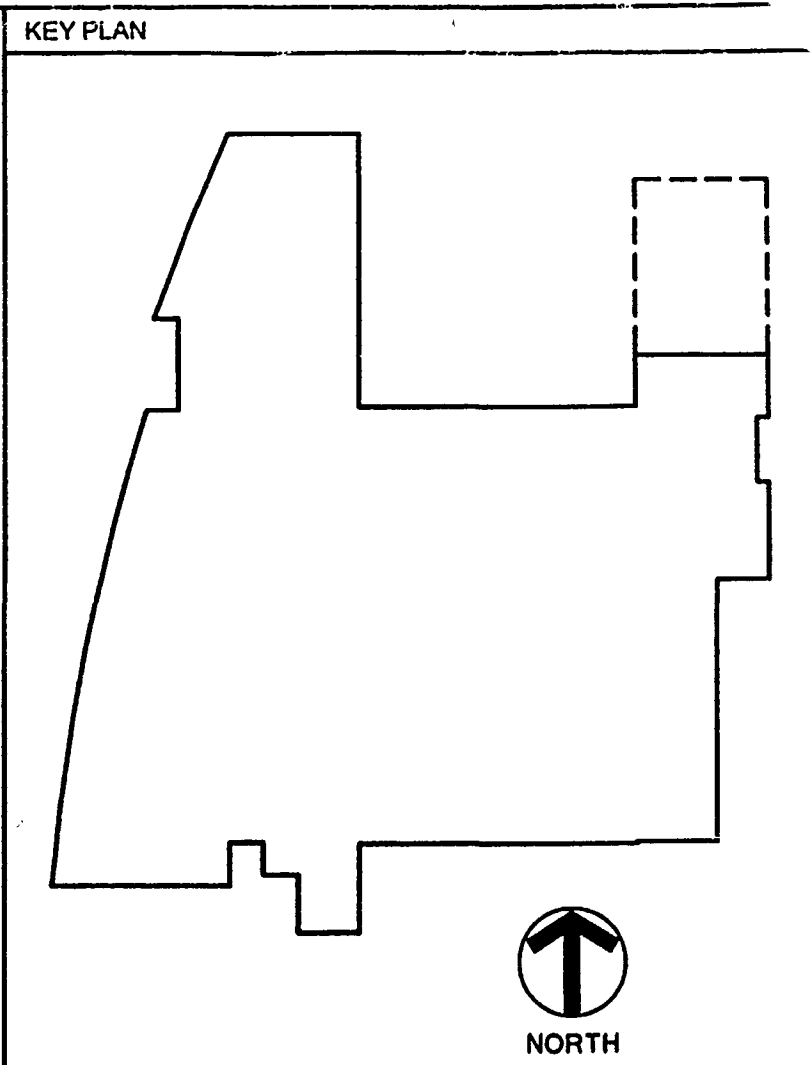
28
C-1.3 C-5.3
NO SCALE
ORIFICE PLATE DETAIL



37
C-1.2 C-5.3
NO SCALE
CITY COMMERCIAL ENTRANCE DETAIL



- NOTES:
- 4000 PSI CONCRETE.
 - MANHOLE SHALL MEET ASTM C478.
 - MANUFACTURED BY HANSON PIPE & PRODUCTS, DALLAS, TX (214) 525-5500, OR EQUAL.
 - 3" DIA WEEP HOLE TO BE PROVIDED IN FIRST RISER SECTION WHEN SUBSURFACE DRAINAGE IS REQUIRED.
 - REINFORCING STEEL PER ASTM C478; AASHTO M-199, VDOT STANDARD FOR SPACING AND LOCATION.

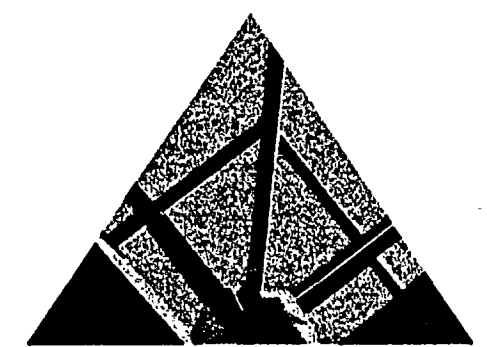


GENERAL NOTES

Cole + Russell Architects

Architecture
Engineering
Interior Design
Landscape Architecture
Construction Administration

537 East Peta Rose Way, Suite 200
Cincinnati, Ohio 45202
(513) 721-6060



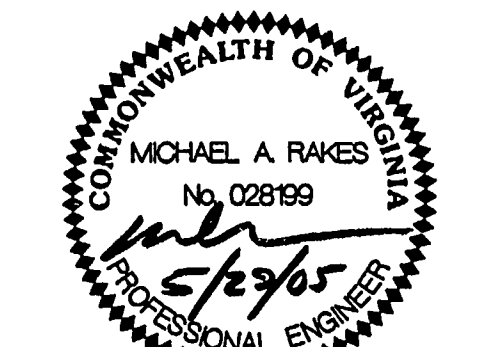
10 CHURCH AVE SE, PLAZA SUITE 1 ROANOKE, VIRGINIA 24011 540.342.6001

ROANOKE • MARION

Roanoke Fire Station & Fire Administration Building

CITY OF ROANOKE
PLAN NUMBER: 6548
BID NUMBER: 05-04-01

SPECTRUM DESIGN PROJECT NO. 03035



DATE: MAY 28, 2005
DESIGN: MAR
CHECKED: RNF
REVISIONS: NUMBER DATE

SHEET TITLE
CIVIL - GENERAL DETAILS

C-5.3