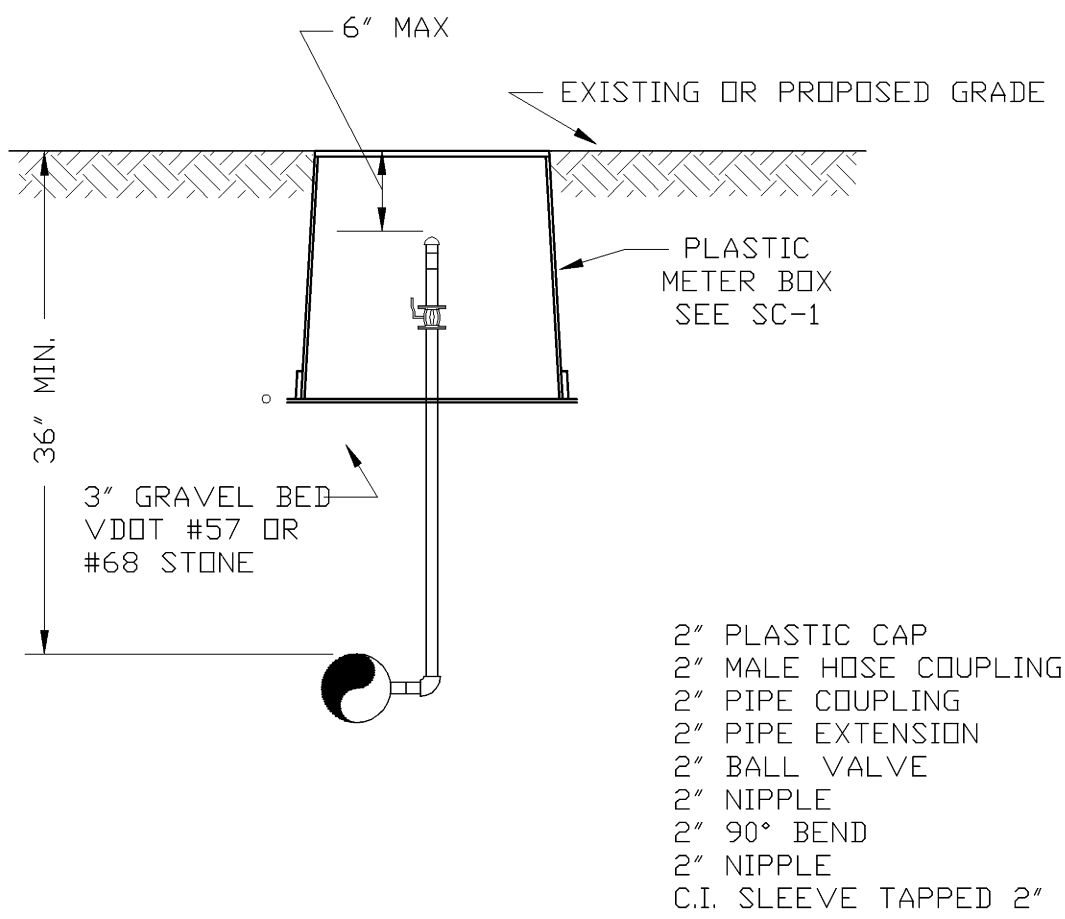


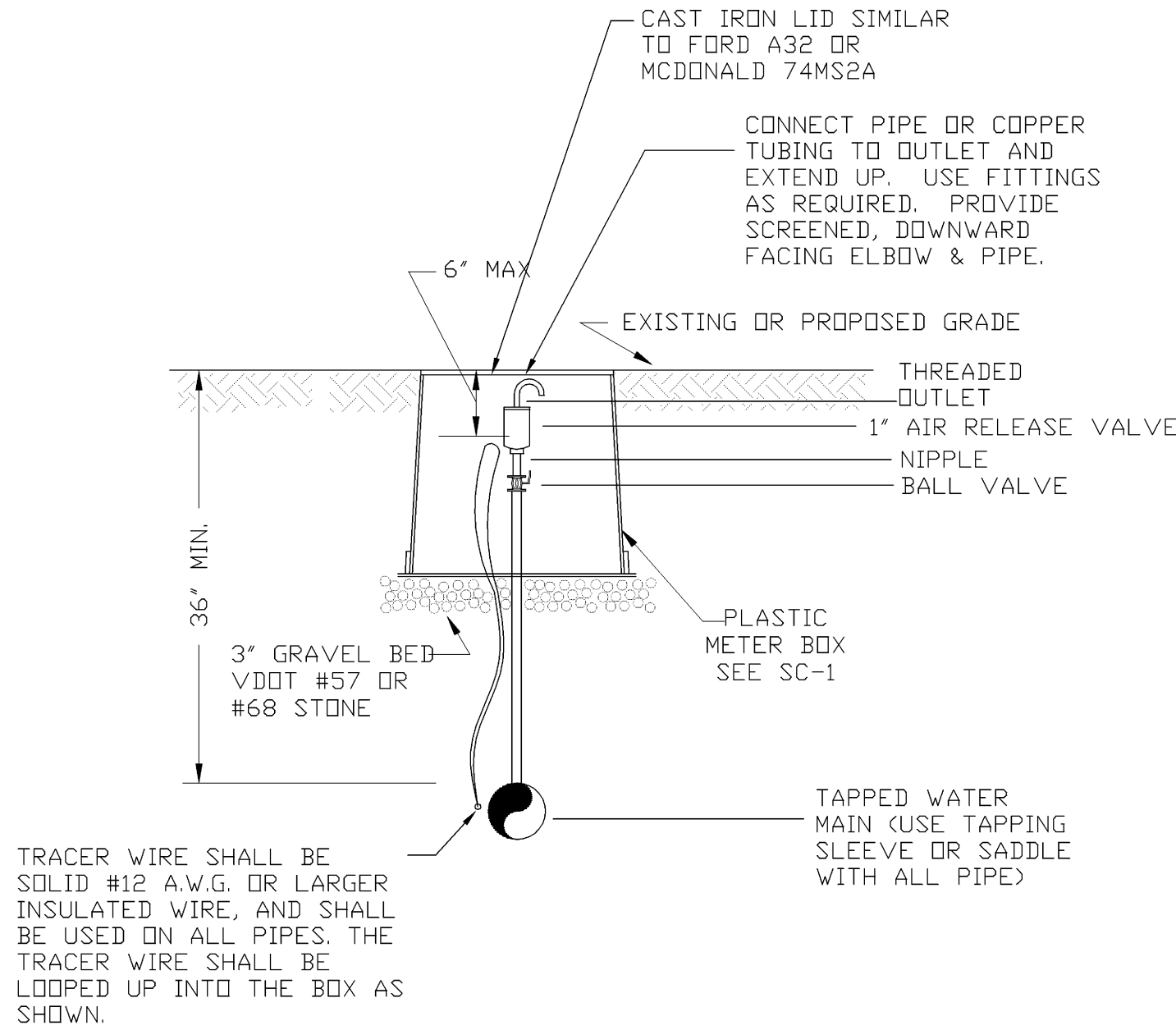
WATER LINE TRENCH  
N.T.S.

- NOTES:
1. IN PAVEMENT, USE PRECAST CHAMBER SHOWN IN BC-3.
  2. USE TEFLON TAPE ON ALL PIPE JOINTS AND CAP.

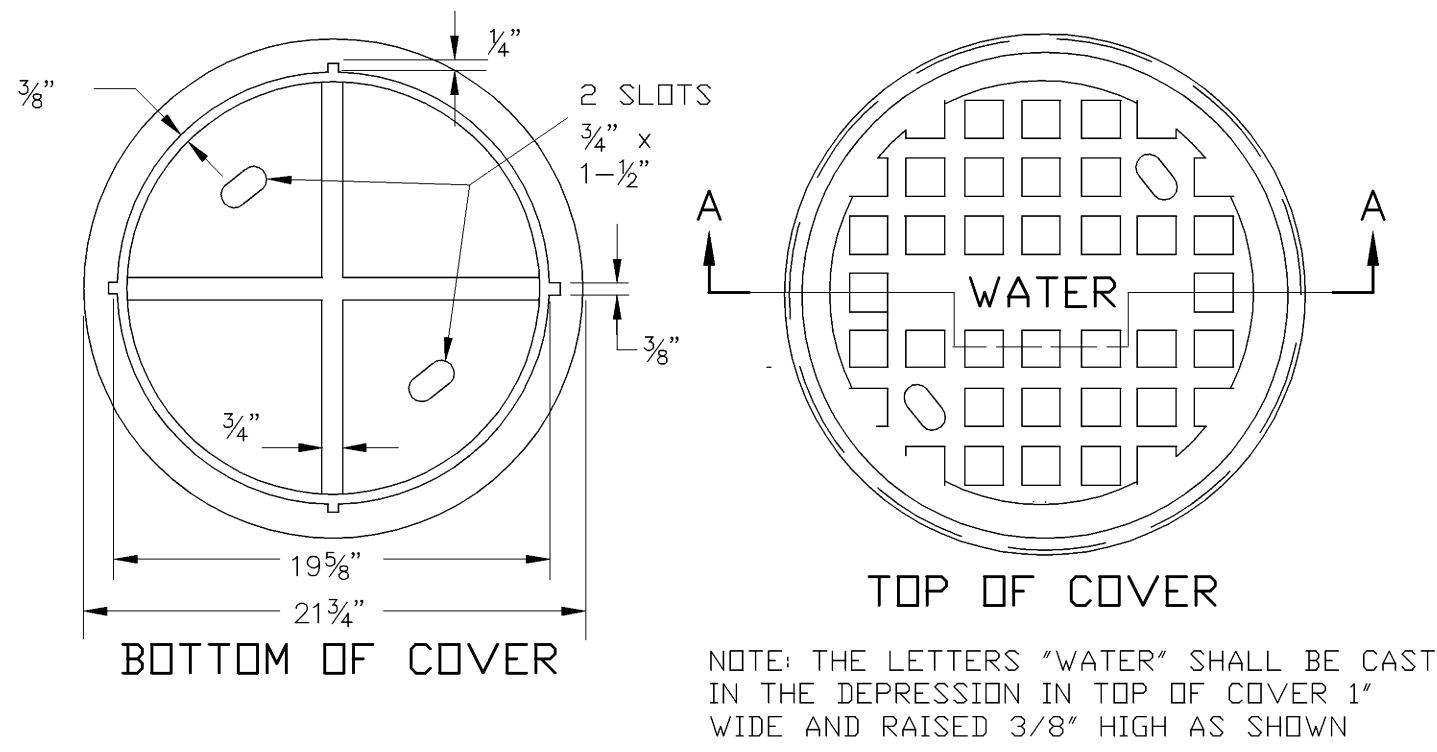


BLOW-OFF CHAMBER  
BC-1  
N.T.S.

- NOTES:
1. IN PAVEMENT, USE PRECAST CHAMBER AS SHOWN IN AR-1.
  2. USE TEFLON TAPE ON ALL PIPE JOINTS AND CAP.
  3. ALL PIPE AND FITTINGS SHALL BE LEAD FREE BRASS OR STAINLESS STEEL. GALVANIZED AND BLACK IRON PIPE WILL NOT BE ALLOWED.

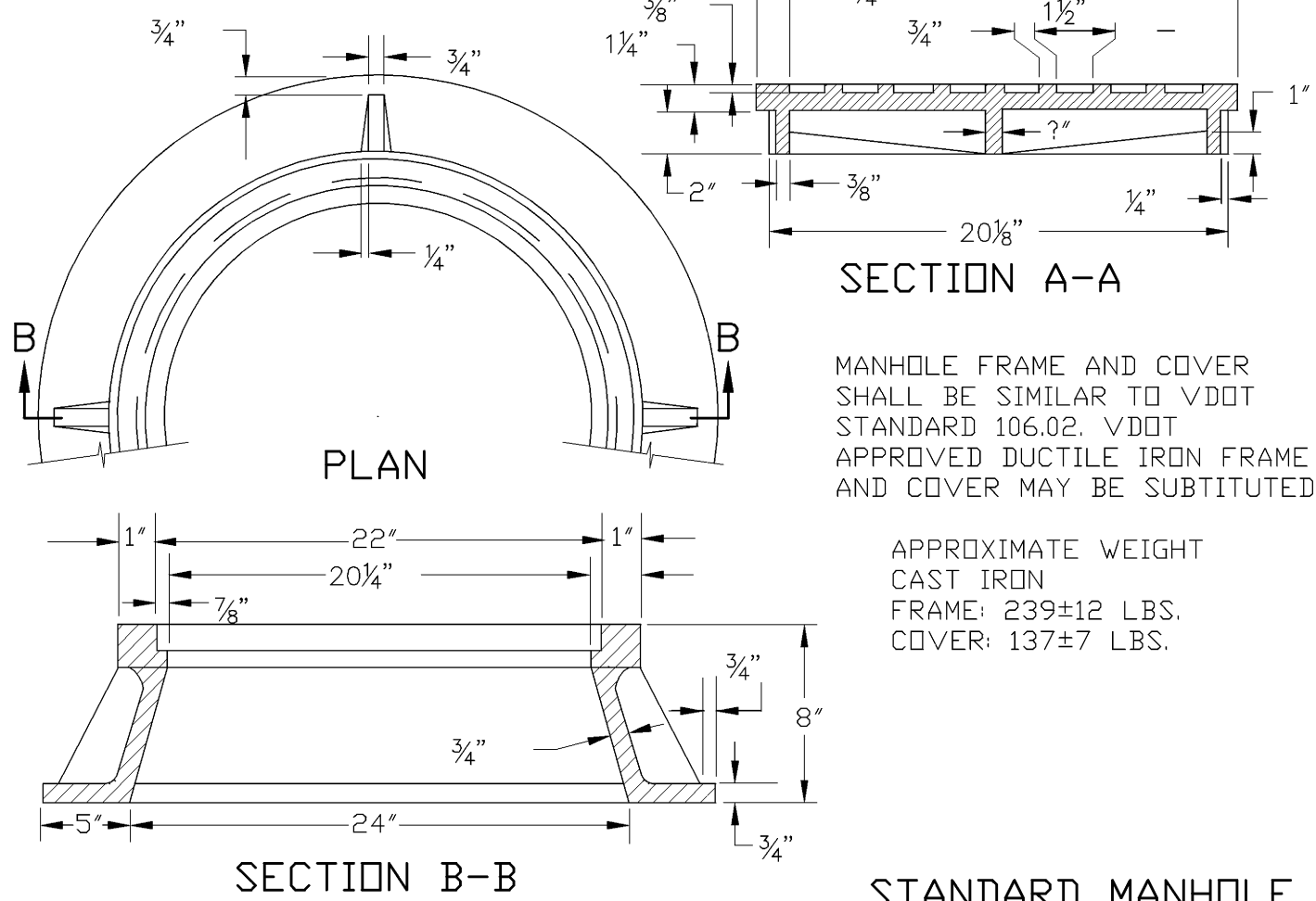


1" AIR RELEASE VALVE  
AR-2  
N.T.S.

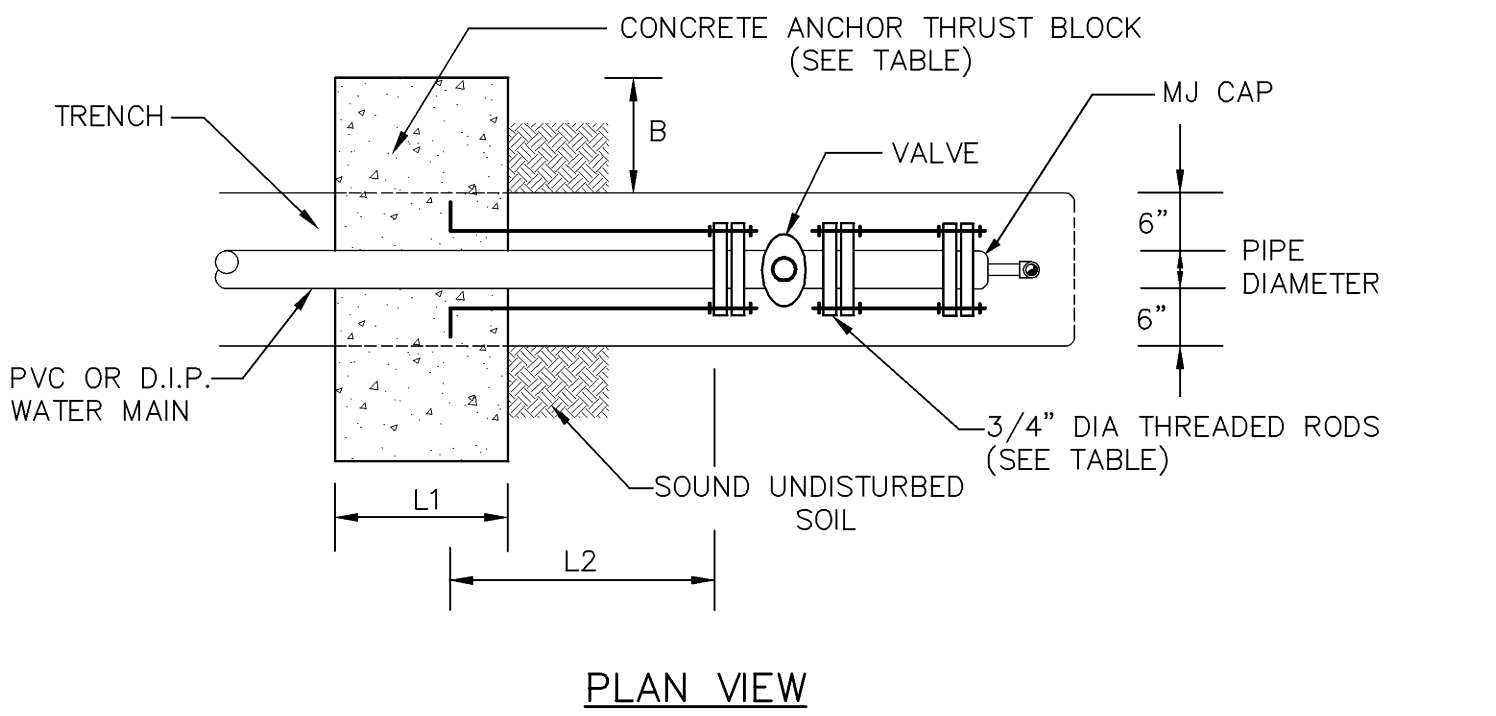


NOTE: THE LETTERS "WATER" SHALL BE CAST IN THE DEPRESSION IN TOP OF COVER 1" WIDE AND RAISED 3/8" HIGH AS SHOWN

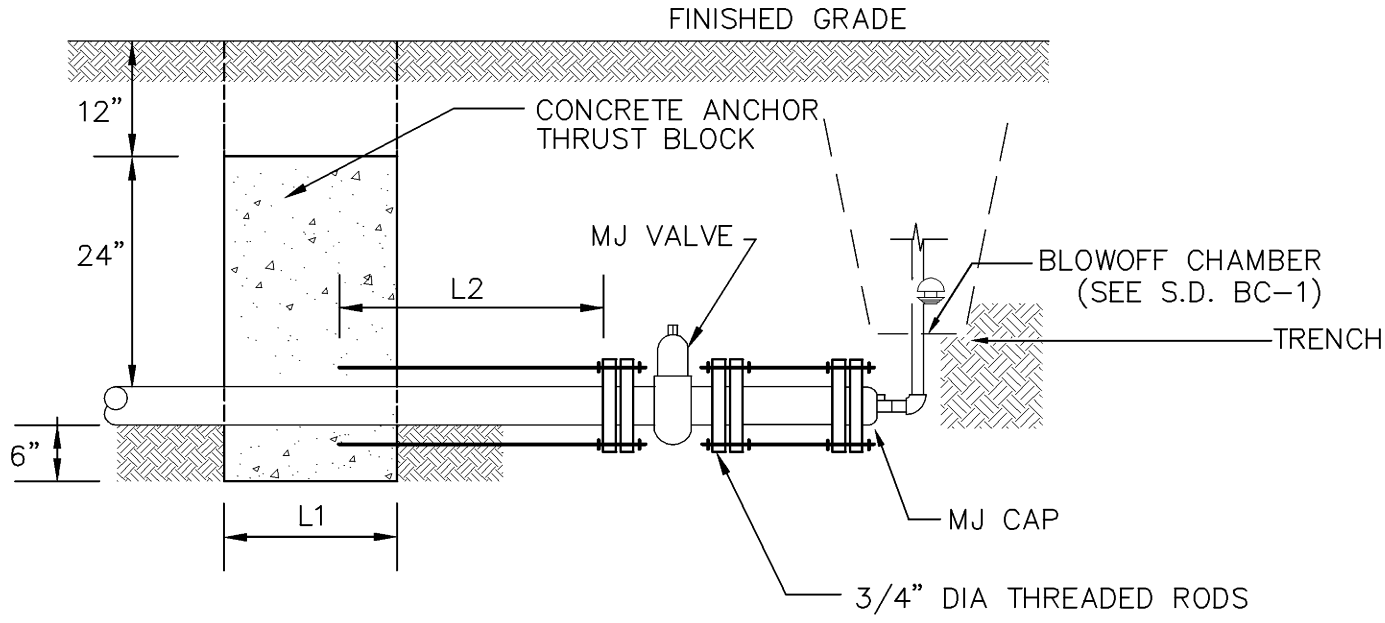
USE SOLID COVER AND CONCEALED LIFTING HOLE WHEN TOP IS BURIED BELOW GRADE



STANDARD MANHOLE  
FRAME & COVER  
FC-1  
N.T.S.



PLAN VIEW



SECTION VIEW

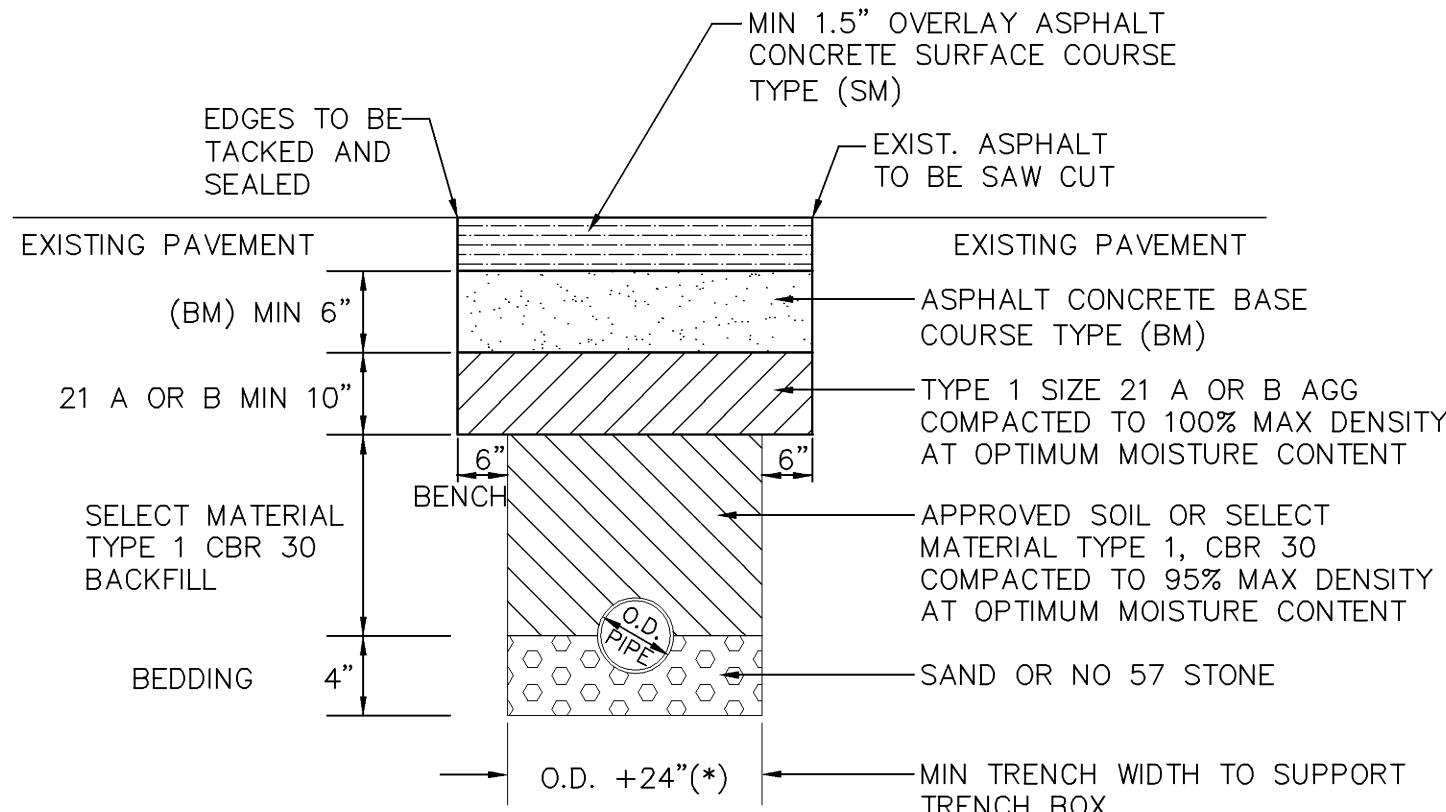
RETAINER GLAND FOR PVC PIPE SHALL BE SERIES 2000 PV, AND FOR DIP PIPE SERIES 100, BY EBAA IRON SALES, INC. "MEGA-LUG" OR APPROVED EQUAL

PIPE DIAMETER (IN)	B MIN (IN)	L1 MIN (IN)	NUMBER OF RODS PER RETAINER	L2 MIN (IN)
4-8	12	18	4	27
10-12	27	33	4	50
14-16	44	50	6	75

NOTE: FOR USE WITH TEST OR WORKING PRESSURES 200 PSI OR LESS.

WATERLINE BULKHEAD ANCHOR  
WITH BLOWOFF DETAIL CA-5

N.T.S.

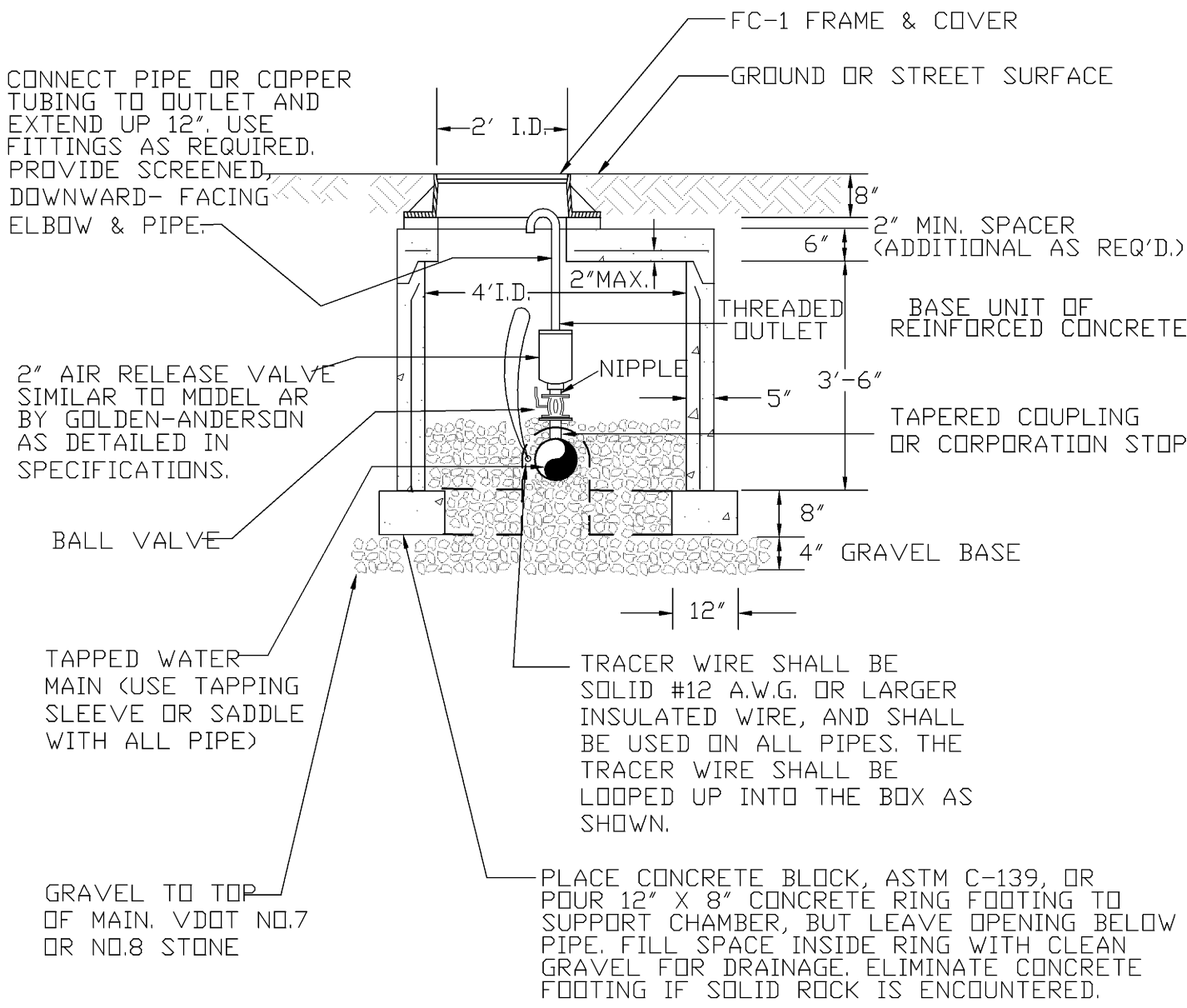


\*FOR PIPE LESS THAN 12" THE TRENCH WIDTH MAY BE 36" MAXIMUM SEE UB-1 (ROAD AND BRIDGE STANDARDS VOLUME II)

- NOTES:
1. TRENCH MAY BE BACKFILLED WITH VDOT NO. 57 STONE FROM PIPE TO BOTTOM OF ASPHALT BASE IN LIEU OF STANDARD DETAIL.
  2. IF PAVEMENT BEING REPLACED IS SURFACE TREATMENT, CONTRACTOR TO REPLACE WITH AN EQUIVALENT PAVEMENT SECTION.

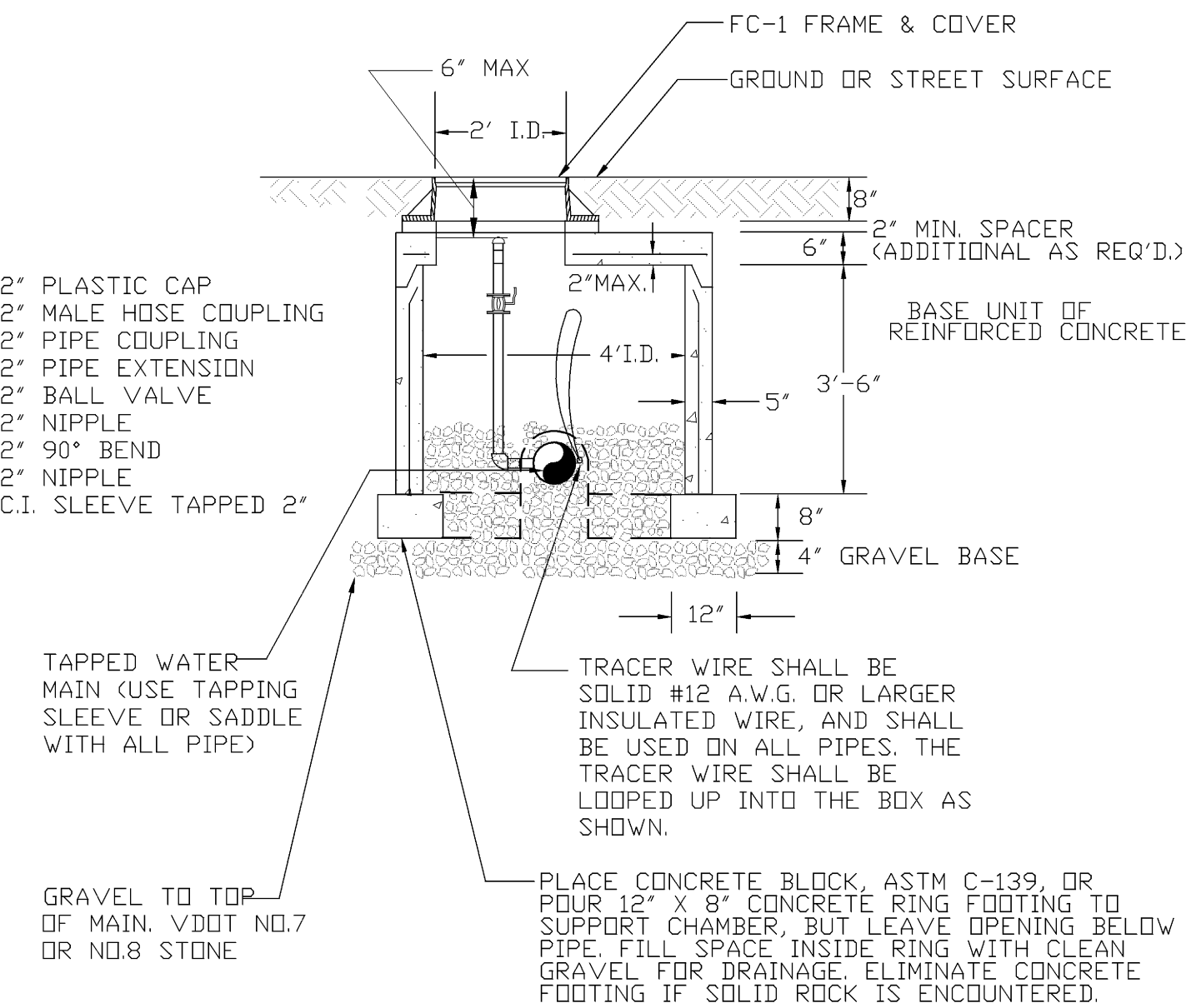
CUT REPLACEMENT IN ROADS WITH ASPHALT  
CONCRETE BASE AND SURFACE  
N.T.S.

NOTE: MATERIALS AND FABRICATION IN ACCORDANCE WITH MH-2 MANHOLE. SIZE OF AIR RELEASE VALVE AND SIZE OF GATE VALVE AS SPECIFIED. WHERE NOTED ON PLANS, USE STANDARD METER BOX AS CHAMBER AND SUPPORT WITH TWO (2) COURSES OF BRICK.



PRECAST CHAMBER FOR  
AIR RELEASE VALVE  
AR-1  
N.T.S.

NOTE: MATERIALS AND FABRICATION IN ACCORDANCE WITH MH-2 MANHOLE. SIZE OF AIR RELEASE VALVE AND SIZE OF GATE VALVE AS SPECIFIED. WHERE NOTED ON PLANS, USE STANDARD METER BOX AS CHAMBER AND SUPPORT WITH TWO (2) COURSES OF BRICK.



PRECAST CHAMBER FOR  
BLOW-OFF VALVE  
BC-3  
N.T.S.

1	8/28/09	VDH COMMENTS
2	9/3/09	OWNER COMMENTS
4	3/14/12	ASBUILTS

\*ENGINEERING >> SURVEYING >> PLANNING

HURT & PROFFITT  
INCORPORATED



2524 LANGHORNE ROAD  
LYNCHBURG VA 24501  
800.242.4906 TOLL FREE  
434.847.7796 MAIN  
434.847.0047 FAX

WATER LINE DETAILS-ASBUILT  
FOR

TOWN OF BOONES MILL WATER SYSTEM REPLACEMENT, VOLUME 1  
TOWN OF BOONES MILL, BOONE DISTRICT, FRANKLIN COUNTY, VA

PROJECT NO.	20080815
G.L. NO.	297-03-A3.9
FILE NO.	G-12675
DATE:	7/31/09
DRAWN BY:	WCH
CHECKED BY:	BLC

HURT & PROFFITT

SHEET NO.  
WL-2