

BK 0758 PG 00597

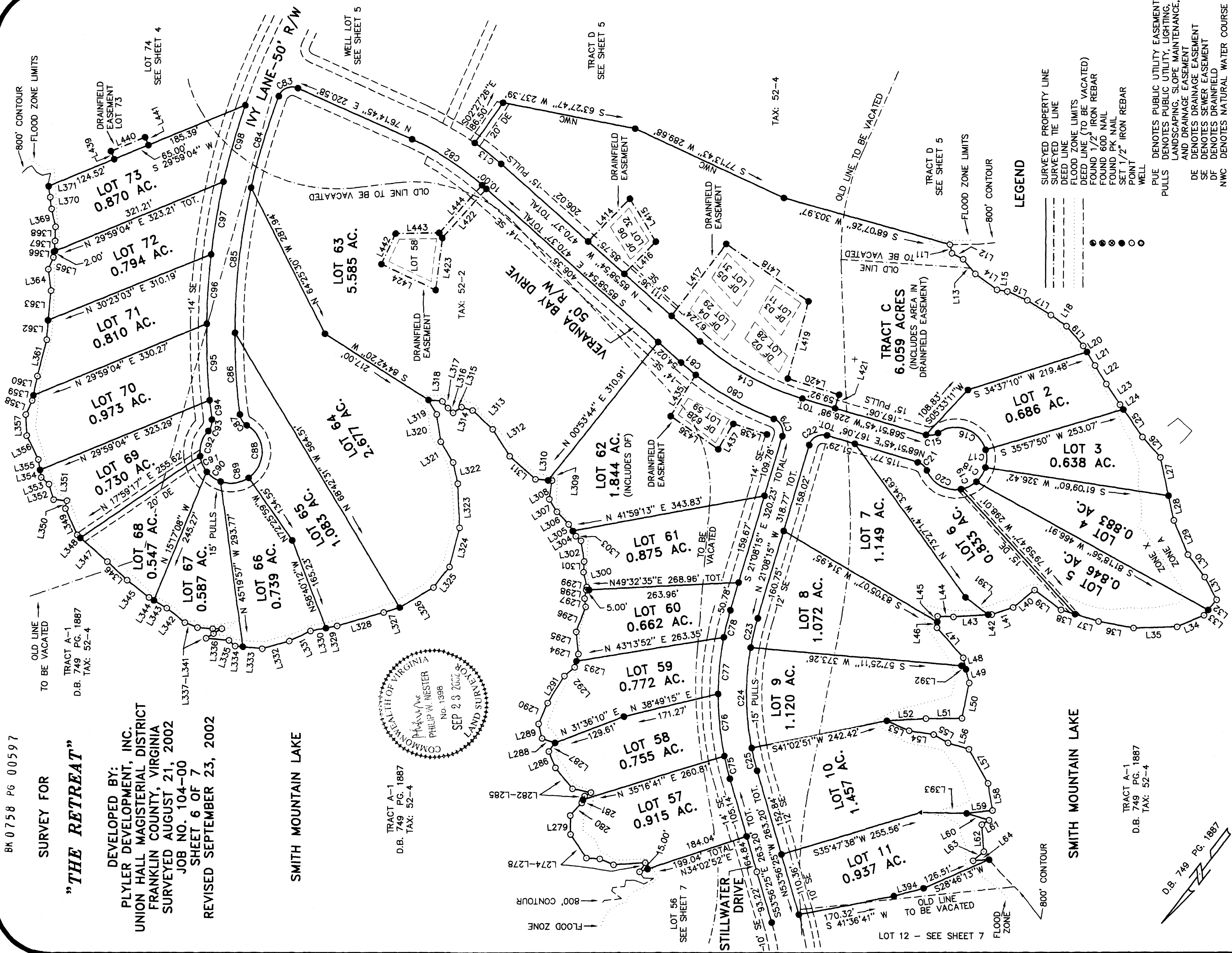
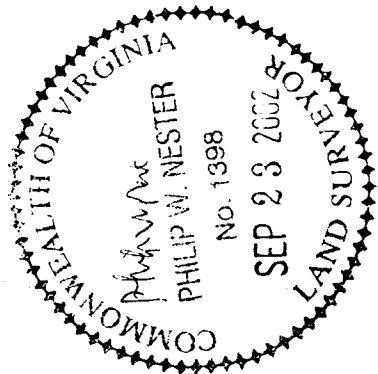
SURVEY FOR

"THE RETREAT"

DEVELOPED BY:
 PLYLER DEVELOPMENT, INC.
 UNION HALL MAGISTERIAL DISTRICT
 FRANKLIN COUNTY, VIRGINIA
 SURVEYED AUGUST 21, 2002
 JOB NO. 104-00
 SHEET 6 OF 7
 REVISED SEPTEMBER 23, 2002

SMITH MOUNTAIN LAKE

TRACT A-1
 D.B. 749 PG. 1887
 TAX: 52-4



LEGEND

- SURVEYED PROPERTY LINE
- SURVEYED TIE LINE
- DEED LINE
- FLOOD ZONE LIMITS
- DEED LINE (TO BE VACATED)
- FOUND 1/2" IRON REBAR
- FOUND 60D NAIL
- FOUND PK NAIL
- SET 1/2" IRON REBAR
- POINT
- WELL

- PUE DENOTES PUBLIC UTILITY EASEMENT
- PULLS DENOTES PUBLIC UTILITY, LIGHTING, LANDSCAPING, SLOPE MAINTENANCE, AND DRAINAGE EASEMENT
- DE DENOTES DRAINAGE EASEMENT
- SE DENOTES SEWER EASEMENT
- DF DENOTES DRAINFIELD
- NWC DENOTES NATURAL WATER COURSE



SCALE: 1" = 100'

TRACT A-1
 D.B. 749 PG. 1887
 TAX: 52-4