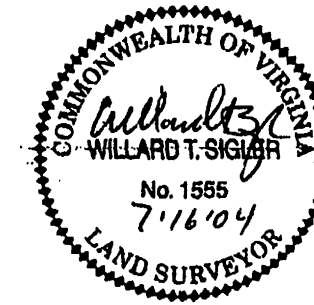


**CURVE DATA CHART**

CURVE	DELTA	RADIUS	LENGTH	CHORD	CHD BEARING
C1	102° 17' 44"	50.00'	89.27'	77.88'	S47° 32' 20"W
C2	089° 10' 54"	50.00'	77.83'	70.29'	N36° 43' 21"W
C3	090° 49' 06"	50.00'	79.25'	71.21'	S53° 16' 39"W
C4	090° 00' 00"	50.00'	78.54'	70.71'	S37° 07' 55"E
C5	090° 00' 00"	50.00'	78.54'	70.71'	N52° 52' 05"E

**LEGEND**

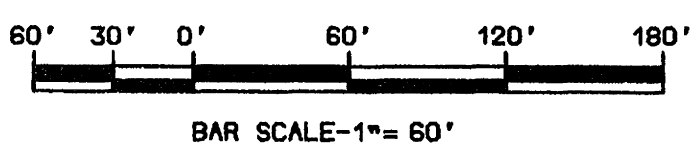
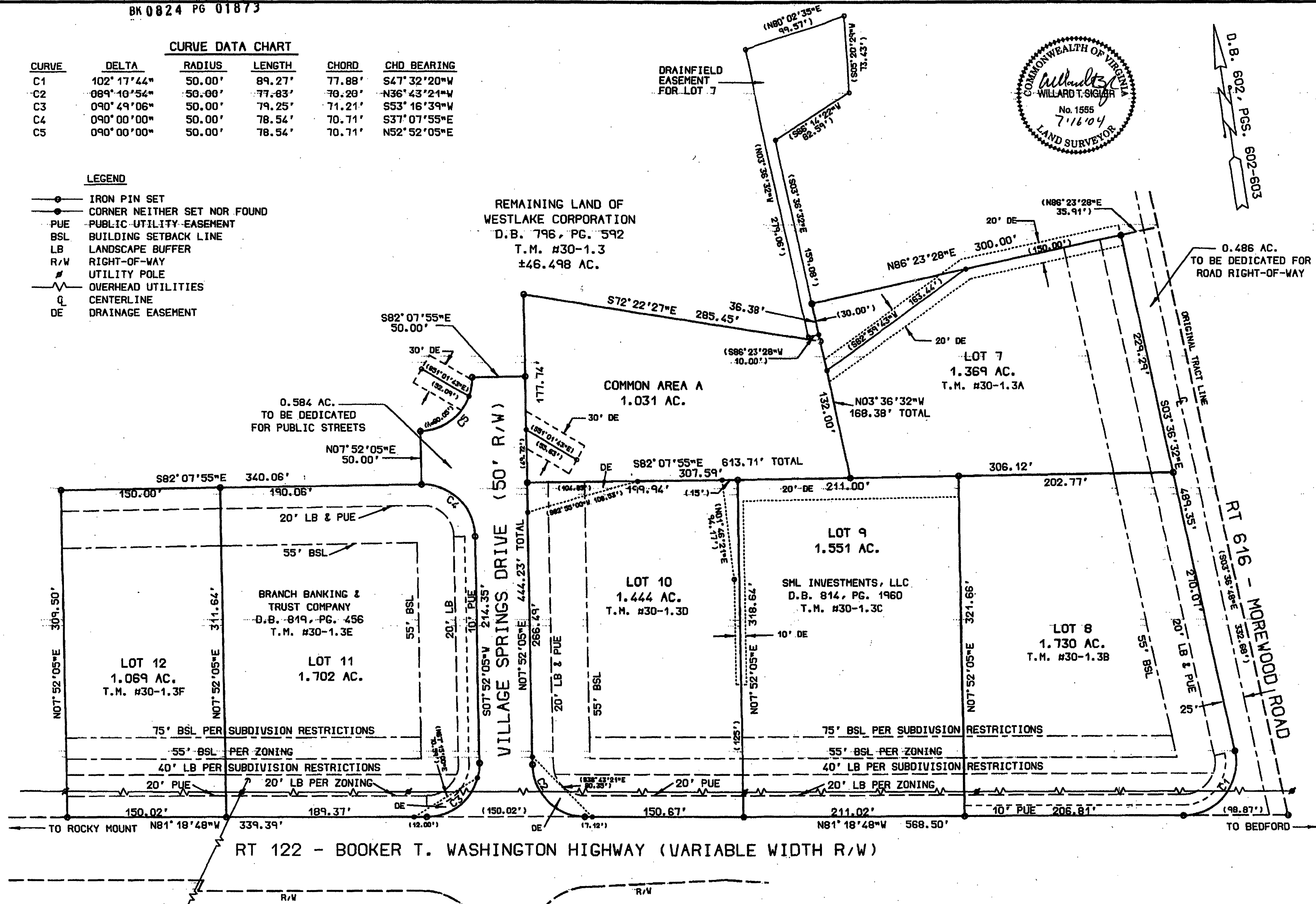
- IRON PIN SET
- CORNER NEITHER SET NOR FOUND
- PUE PUBLIC UTILITY EASEMENT
- BSL BUILDING SETBACK LINE
- LB LANDSCAPE BUFFER
- R/W RIGHT-OF-WAY
- # UTILITY POLE
- OVERHEAD UTILITIES
- Q CENTERLINE
- DE DRAINAGE EASEMENT



D.B. 602, PGS. 602-603

REMAINING LAND OF  
WESTLAKE CORPORATION  
D.B. 796, PG. 592  
T.M. #30-1.3  
±46.498 AC.

0.486 AC.  
TO BE DEDICATED FOR  
ROAD RIGHT-OF-WAY



<b>BERKLEY-HOWELL &amp; ASSOC., P.C.</b> ENGINEERS - SURVEYORS - PLANNERS 306 ENTERPRISE DRIVE, SUITE C FOREST, VIRGINIA 24551 PHONE: (434)385-7548 FAX: (434)385-6178		AMENDED SUBDIVISION OF <b>LOTS 7-12</b> <b>WESTLAKE VILLAGE BUSINESS PARK</b> GILLS CREEK DISTRICT - FRANKLIN COUNTY, VA	
SCALE: 1" = 60'	DATE: JULY 12, 2004	COMM. NO. 030066	F.B. REF. 03-4
REV. 7-18-04		*RESUB7-12"	SHEET 2 OF 2