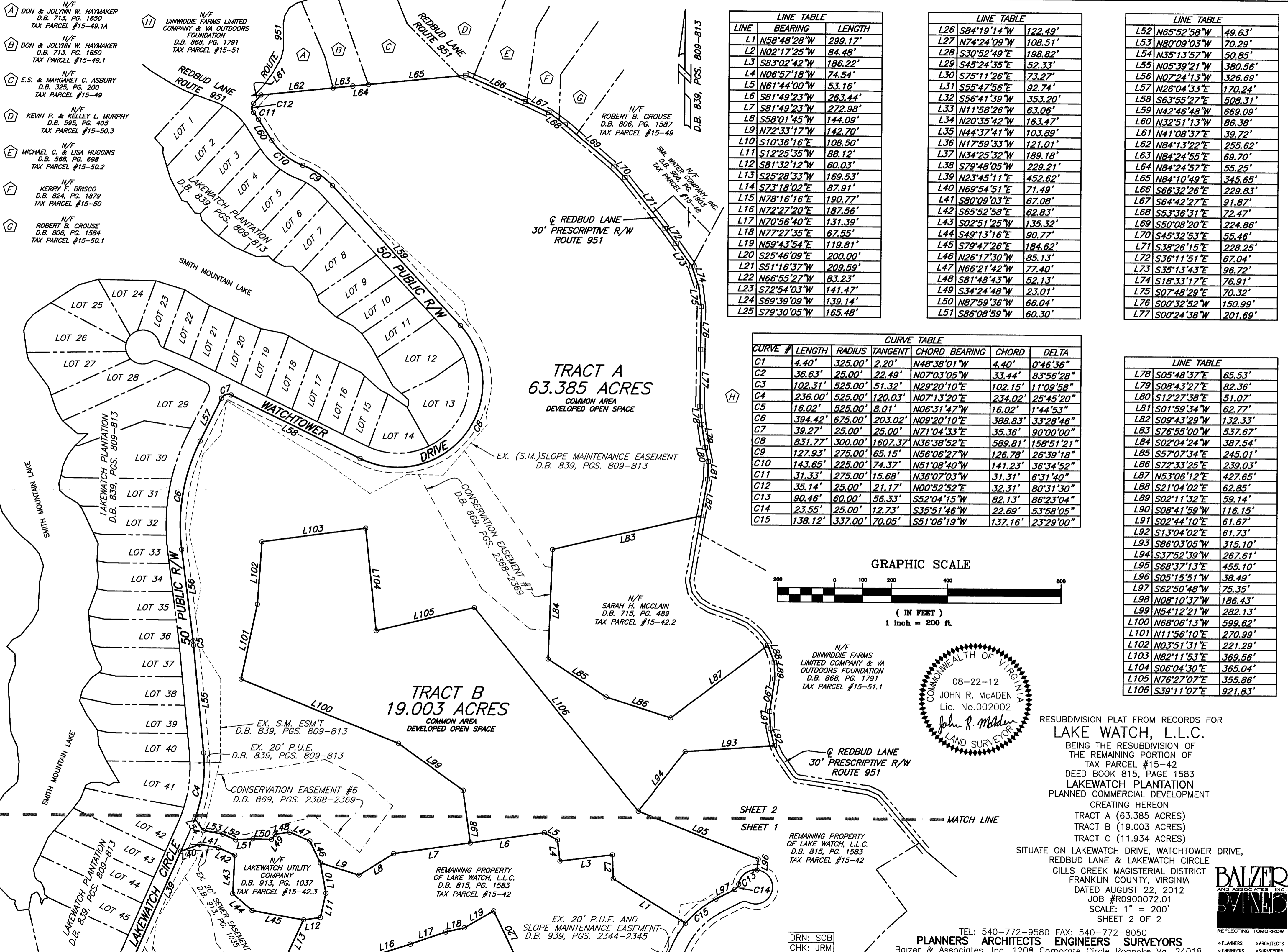


- A DON & JOLYNN W. HAYMAKER  
D.B. 713, PG. 1650  
TAX PARCEL #15-49.1A
- B DON & JOLYNN W. HAYMAKER  
D.B. 713, PG. 1650  
TAX PARCEL #15-49.1
- C E.S. & MARGARET C. ASBURY  
D.B. 325, PG. 200  
TAX PARCEL #15-49
- D KEVIN P. & KELLEY L. MURPHY  
D.B. 595, PG. 405  
TAX PARCEL #15-50.3
- E MICHAEL C. & LISA HUGGINS  
D.B. 568, PG. 698  
TAX PARCEL #15-50.2
- F KERRY F. BRISCO  
D.B. 824, PG. 1879  
TAX PARCEL #15-50
- G ROBERT B. CROUSE  
D.B. 806, PG. 1584  
TAX PARCEL #15-50.1

- H DINWIDDIE FARMS LIMITED  
COMPANY, & VA OUTDOORS  
FOUNDATION  
D.B. 868, PG. 1791  
TAX PARCEL #15-51



LINE TABLE

LINE	BEARING	LENGTH
L1	N58°48'28"W	299.17'
L2	N02°17'25"W	84.48'
L3	S83°02'42"W	186.22'
L4	N06°57'18"W	74.54'
L5	N61°44'00"W	53.16'
L6	S81°49'23"W	263.44'
L7	S81°49'23"W	272.98'
L8	S58°01'45"W	144.09'
L9	N72°33'17"W	142.70'
L10	S10°36'16"E	108.50'
L11	S12°25'35"W	88.12'
L12	S81°32'12"W	60.03'
L13	S25°28'33"W	169.53'
L14	S73°18'02"E	87.91'
L15	N78°16'16"E	190.77'
L16	N72°27'20"E	187.56'
L17	N70°56'40"E	131.39'
L18	N77°27'35"E	67.55'
L19	N59°43'54"E	119.81'
L20	S25°46'09"E	200.00'
L21	S51°16'37"W	209.59'
L22	N66°55'27"W	83.23'
L23	S72°54'03"W	141.47'
L24	S69°39'09"W	139.14'
L25	S79°30'05"W	165.48'

LINE TABLE

L26	S84°19'14"W	122.49'
L27	N74°24'09"W	108.51'
L28	S30°52'49"E	198.82'
L29	S45°24'35"E	52.33'
L30	S75°11'26"E	73.27'
L31	S55°47'56"E	92.74'
L32	S56°41'39"W	353.20'
L33	N11°58'26"W	63.06'
L34	N20°35'42"W	163.47'
L35	N44°37'41"W	103.89'
L36	N17°59'33"W	121.01'
L37	N34°25'32"W	189.18'
L38	S79°48'05"W	229.21'
L39	N23°45'11"E	452.62'
L40	N69°54'51"E	71.49'
L41	S80°09'03"E	67.08'
L42	S65°52'58"E	62.83'
L43	S02°51'25"W	135.32'
L44	S49°13'16"E	90.77'
L45	S79°47'26"E	184.62'
L46	N26°17'30"W	85.13'
L47	N66°21'42"W	77.40'
L48	S81°48'43"W	52.13'
L49	S34°24'48"W	23.01'
L50	N87°59'36"W	66.04'
L51	S86°08'59"W	60.30'

LINE TABLE

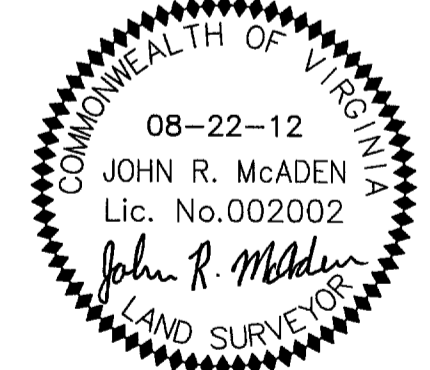
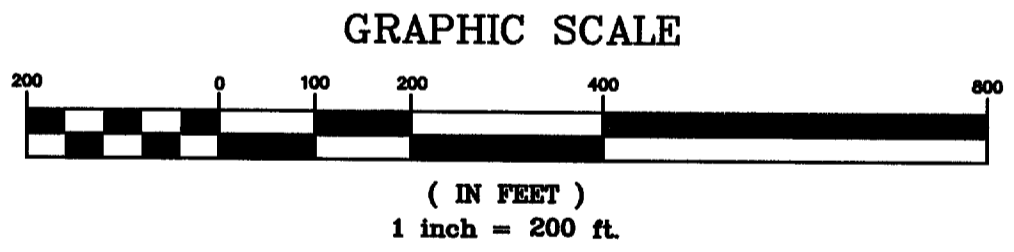
L52	N65°52'58"W	49.63'
L53	N80°09'03"W	70.29'
L54	N35°13'57"W	50.85'
L55	N05°39'21"W	380.56'
L56	N07°24'13"W	326.69'
L57	N26°04'33"E	170.24'
L58	S63°55'27"E	508.31'
L59	N42°46'48"W	669.09'
L60	N32°51'13"W	86.38'
L61	N41°08'37"E	39.72'
L62	N84°13'22"E	255.62'
L63	N84°24'55"E	69.70'
L64	N84°24'57"E	55.25'
L65	N84°10'49"E	345.65'
L66	S66°32'26"E	229.83'
L67	S64°42'27"E	91.87'
L68	S53°36'31"E	72.47'
L69	S50°08'20"E	224.86'
L70	S45°32'53"E	55.46'
L71	S38°26'15"E	228.25'
L72	S36°11'51"E	67.04'
L73	S35°13'43"E	96.72'
L74	S18°33'17"E	76.91'
L75	S07°48'29"E	70.32'
L76	S00°32'52"W	150.99'
L77	S00°24'38"W	201.69'

CURVE TABLE

CURVE #	LENGTH	RADIUS	TANGENT	CHORD BEARING	CHORD	DELTA
C1	4.40'	325.00'	2.20'	N48°38'01"W	4.40'	0°46'36"
C2	36.63'	25.00'	22.49'	N07°03'05"W	33.44'	83°56'28"
C3	102.31'	525.00'	51.32'	N29°20'10"E	102.15'	11°09'58"
C4	236.00'	525.00'	120.03'	N07°13'20"E	234.02'	25°45'20"
C5	16.02'	525.00'	8.01'	N06°31'47"W	16.02'	1°44'53"
C6	394.42'	675.00'	203.02'	N09°20'10"E	388.83'	33°28'46"
C7	39.27'	25.00'	25.00'	N71°04'33"E	35.36'	90°00'00"
C8	831.77'	300.00'	1607.37'	N36°38'52"E	589.81'	158°51'21"
C9	127.93'	275.00'	65.15'	N56°06'27"W	126.78'	26°39'18"
C10	143.65'	225.00'	74.37'	N51°08'40"W	141.23'	36°34'52"
C11	31.33'	275.00'	15.68'	N36°07'03"W	31.31'	6°31'40"
C12	35.14'	25.00'	21.17'	N00°52'52"E	32.31'	80°31'30"
C13	90.46'	60.00'	56.33'	S52°04'15"W	82.13'	86°23'04"
C14	23.55'	25.00'	12.73'	S35°51'46"W	22.69'	53°58'05"
C15	138.12'	337.00'	70.05'	S51°06'19"W	137.16'	23°29'00"

LINE TABLE

L78	S05°48'37"E	65.53'
L79	S08°43'27"E	82.36'
L80	S12°27'38"E	51.07'
L81	S01°59'34"W	62.77'
L82	S09°43'29"W	132.33'
L83	S76°55'00"W	537.67'
L84	S02°04'24"W	387.54'
L85	S57°07'34"E	245.01'
L86	S72°33'25"E	239.03'
L87	N53°06'12"E	427.65'
L88	S21°04'02"E	62.85'
L89	S02°11'32"E	59.14'
L90	S08°41'59"W	116.15'
L91	S02°44'10"E	61.67'
L92	S13°04'02"E	61.73'
L93	S86°03'05"W	315.10'
L94	S37°52'39"W	267.61'
L95	S68°37'13"E	455.10'
L96	S05°15'51"W	38.49'
L97	S62°50'48"W	75.35'
L98	N08°10'37"W	186.43'
L99	N54°12'21"W	282.13'
L100	N68°06'13"W	599.62'
L101	N11°56'10"E	270.99'
L102	N03°51'31"E	221.29'
L103	N82°11'53"E	369.56'
L104	S06°04'30"E	365.04'
L105	N76°27'07"E	355.86'
L106	S39°11'07"E	921.83'



RESUBDIVISION PLAT FROM RECORDS FOR  
**LAKE WATCH, L.L.C.**  
 BEING THE RESUBDIVISION OF  
 THE REMAINING PORTION OF  
 TAX PARCEL #15-42  
 DEED BOOK 815, PAGE 1583  
**LAKEWATCH PLANTATION**  
 PLANNED COMMERCIAL DEVELOPMENT  
 CREATING HEREON  
 TRACT A (63.385 ACRES)  
 TRACT B (19.003 ACRES)  
 TRACT C (11.934 ACRES)  
 SITUATE ON LAKEWATCH DRIVE, WATCHTOWER DRIVE,  
 REDBUD LANE & LAKEWATCH CIRCLE  
 GILLS CREEK MAGISTERIAL DISTRICT  
 FRANKLIN COUNTY, VIRGINIA  
 DATED AUGUST 22, 2012  
 JOB #R0900072.01  
 SCALE: 1" = 200'  
 SHEET 2 OF 2