

BK 1064 PG 1305

LEGEND

- - IRON PIN FOUND
- - IRON PIN SET
- PUE - PUBLIC UTILITY EASEMENT
- SM - SLOPE MAINT. EASEMENT
- DE - DRAINAGE EASEMENT
- SE - SEWER EASEMENT
- AE - ACCESS EASEMENT
- UE - UTILITY EASEMENT

LINE TABLE

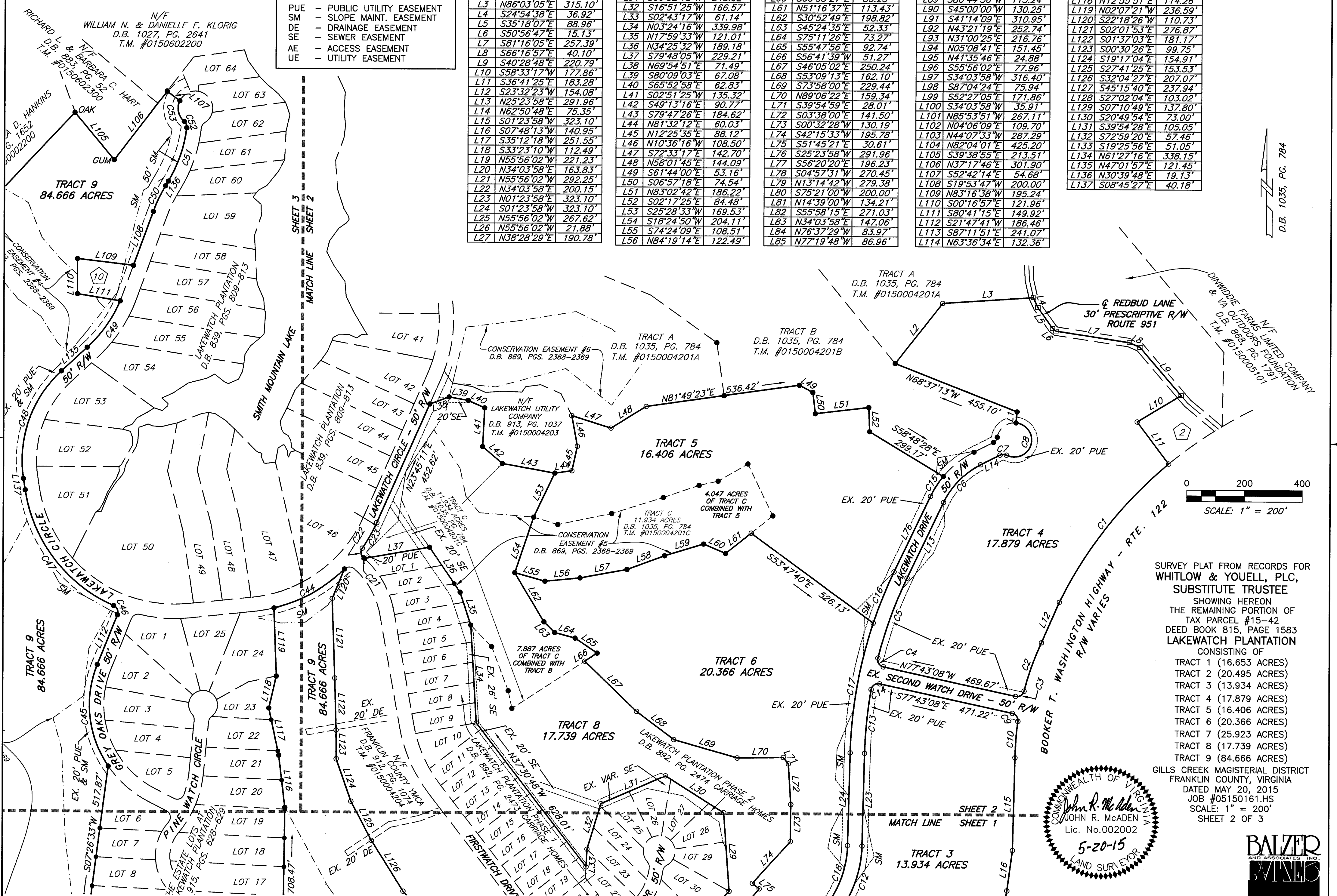
LINE	BEARING	DISTANCE
L1	N05°15'51"E	38.49'
L2	N37°52'39"E	267.61'
L3	N86°03'05"E	315.10'
L4	S24°54'38"E	36.92'
L5	S35°18'07"E	88.96'
L6	S50°56'47"E	15.13'
L7	S81°16'05"E	257.39'
L8	S66°16'57"E	40.10'
L9	S40°28'48"E	220.79'
L10	S58°33'17"W	177.86'
L11	S36°41'25"E	183.28'
L12	S23°32'23"W	154.08'
L13	N25°23'58"E	291.96'
L14	N62°50'48"E	75.35'
L15	S01°23'58"W	323.10'
L16	S07°48'13"W	140.95'
L17	S35°12'18"W	251.55'
L18	S33°23'10"W	112.49'
L19	N55°56'02"W	221.23'
L20	N34°03'58"E	163.83'
L21	N55°56'02"W	292.25'
L22	N34°03'58"E	200.15'
L23	N01°23'58"E	323.10'
L24	S01°23'58"W	323.10'
L25	N55°56'02"W	267.62'
L26	N55°56'02"W	21.88'
L27	N38°28'29"E	190.78'

L28	N43°36'03"E	361.62'
L29	N04°03'42"W	273.42'
L30	N57°51'35"W	239.02'
L31	S66°32'15"W	243.92'
L32	S16°51'25"W	166.57'
L33	S02°43'17"W	61.14'
L34	N03°24'16"W	339.98'
L35	N17°59'33"W	121.01'
L36	N34°25'32"W	189.18'
L37	S79°48'05"W	229.21'
L38	N69°54'51"E	71.49'
L39	S80°09'03"E	67.08'
L40	S65°52'58"E	62.83'
L41	S02°51'25"W	135.32'
L42	S49°13'16"E	90.77'
L43	S79°47'26"E	184.62'
L44	N81°32'12"E	60.03'
L45	N12°25'35"E	88.12'
L46	N10°36'16"W	108.50'
L47	S72°33'17"E	142.70'
L48	N58°01'45"E	144.09'
L49	S61°44'00"E	53.16'
L50	S06°57'18"E	74.54'
L51	N83°02'42"E	186.22'
L52	S02°17'25"E	84.48'
L53	S25°28'33"W	169.53'
L54	S18°24'50"W	204.11'
L55	S74°24'09"E	108.51'
L56	N84°19'14"E	122.49'

L57	N79°30'05"E	165.48'
L58	N69°39'09"E	139.14'
L59	N72°54'03"E	141.47'
L60	S66°55'27"E	83.23'
L61	N51°16'37"E	113.43'
L62	S30°52'49"E	198.82'
L63	S45°24'35"E	52.33'
L64	S75°11'26"E	73.27'
L65	S55°47'56"E	92.74'
L66	S56°41'39"W	51.27'
L67	S46°05'02"E	250.24'
L68	S53°09'13"E	162.10'
L69	S73°58'00"E	229.44'
L70	N89°06'22"E	159.34'
L71	S39°54'59"E	28.01'
L72	S03°38'00"E	141.50'
L73	S00°32'28"W	130.19'
L74	S42°15'33"W	195.78'
L75	S51°45'21"E	30.61'
L76	S25°23'58"W	291.96'
L77	S56°20'20"E	196.23'
L78	S04°57'31"W	270.45'
L79	N13°14'42"W	279.38'
L80	S75°21'00"W	200.00'
L81	N14°39'00"W	134.21'
L82	S55°58'15"E	271.03'
L83	N34°03'58"E	147.06'
L84	N76°37'29"W	83.97'
L85	N77°19'48"W	86.96'

L86	S73°36'05"W	104.26'
L87	S04°49'51"W	178.23'
L88	N45°00'00"W	46.33'
L89	S86°44'36"W	113.24'
L90	S45°00'00"W	130.25'
L91	S41°14'09"E	310.95'
L92	N43°21'19"E	252.74'
L93	N31°00'25"E	216.76'
L94	N05°08'41"E	151.45'
L95	N41°35'46"E	24.88'
L96	S55°56'02"E	77.96'
L97	S34°03'58"W	316.40'
L98	S87°04'24"E	75.94'
L99	S52°27'05"E	171.86'
L100	S34°03'58"W	35.91'
L101	N85°53'51"W	267.11'
L102	N04°06'09"E	109.70'
L103	N44°07'33"W	287.29'
L104	N82°04'01"E	425.20'
L105	S39°38'55"E	213.51'
L106	N37°17'46"E	301.90'
L107	S52°42'14"E	54.68'
L108	S19°53'47"W	200.00'
L109	N83°16'38"W	195.24'
L110	S00°16'57"E	121.96'
L111	S80°41'15"E	149.92'
L112	S21°47'41"W	186.46'
L113	S87°11'51"E	241.07'
L114	N63°36'34"E	132.36'

L115	N70°27'27"E	274.95'
L116	N06°51'59"W	181.79'
L117	N12°05'10"W	167.49'
L118	N12°55'51"E	114.26'
L119	N02°07'21"W	236.59'
L120	S22°18'26"W	110.73'
L121	S02°01'53"E	276.87'
L122	S01°37'03"E	181.17'
L123	S00°30'26"E	99.75'
L124	S19°17'04"E	154.91'
L125	S27°41'25"E	153.53'
L126	S32°04'27"E	207.07'
L127	S45°15'40"E	237.94'
L128	S27°02'04"E	103.02'
L129	S07°10'49"E	137.80'
L130	S20°49'54"E	73.00'
L131	S39°54'28"E	105.05'
L132	S72°59'20"E	57.46'
L133	S19°25'56"E	51.05'
L134	N61°27'16"E	338.15'
L135	N47°01'57"E	121.45'
L136	N30°39'48"E	19.13'
L137	S08°45'27"E	40.18'



SURVEY PLAT FROM RECORDS FOR
WHITLOW & YUELL, PLC,
 SUBSTITUTE TRUSTEE
 SHOWING HEREON
 THE REMAINING PORTION OF
 TAX PARCEL #15-42
 DEED BOOK 815, PAGE 1583
LAKEWATCH PLANTATION
 CONSISTING OF
 TRACT 1 (16.653 ACRES)
 TRACT 2 (20.495 ACRES)
 TRACT 3 (13.934 ACRES)
 TRACT 4 (17.879 ACRES)
 TRACT 5 (16.406 ACRES)
 TRACT 6 (20.366 ACRES)
 TRACT 7 (25.923 ACRES)
 TRACT 8 (17.739 ACRES)
 TRACT 9 (84.666 ACRES)
 GILLS CREEK MAGISTERIAL DISTRICT
 FRANKLIN COUNTY, VIRGINIA
 DATED MAY 20, 2015
 JOB #05150161.HS
 SCALE: 1" = 200'
 SHEET 2 OF 3

