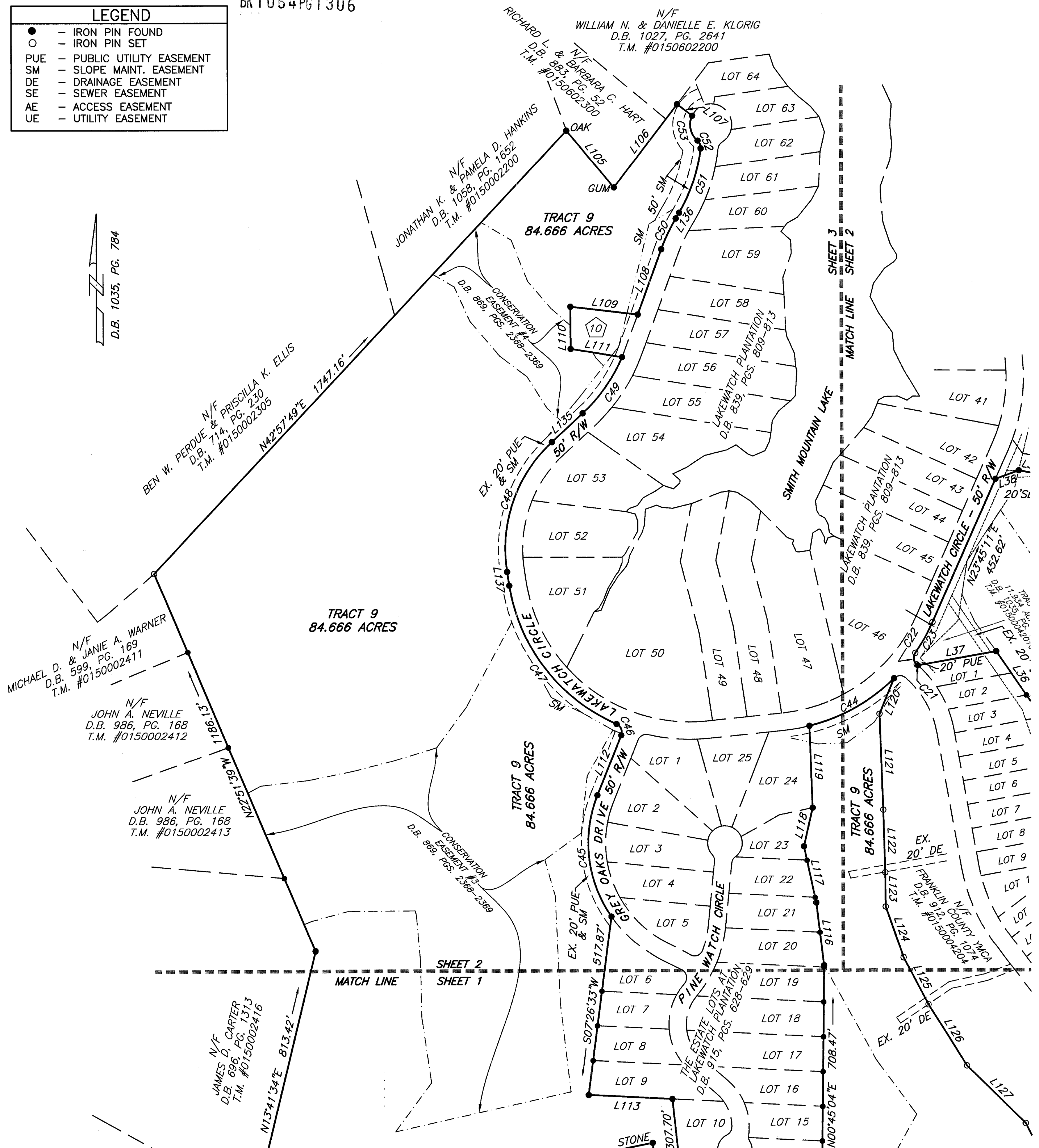


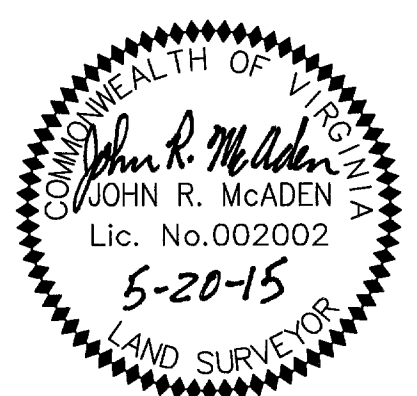
BK 1064 PG 1306

LEGEND	
●	IRON PIN FOUND
○	IRON PIN SET
PUE	PUBLIC UTILITY EASEMENT
SM	SLOPE MAINT. EASEMENT
DE	DRAINAGE EASEMENT
SE	SEWER EASEMENT
AE	ACCESS EASEMENT
UE	UTILITY EASEMENT

CURVE TABLE						
CURVE	RADIUS	ARC LENGTH	CHORD BEARING	CHORD LENGTH	DELTA ANGLE	TANGENT
C1	1467.94	616.88	N37°56'10"E	612.35'	24°04'39"	313.06'
C2	987.73	179.40	N19°30'57"E	179.15'	10°24'23"	89.95'
C3	25.00	38.38	N58°17'49"E	34.72'	87°58'06"	24.13'
C4	25.00	40.08	S31°47'34"E	35.92'	91°51'09"	25.82'
C5	1507.44	296.40	S19°45'59"W	295.92'	11°15'57"	148.68'
C6	287.00	187.58	S44°07'23"W	184.26'	37°26'50"	97.28'
C7	25.00	23.55	S89°49'51"W	22.69'	53°58'05"	12.73'
C8	60.00	211.06	S16°02'22"W	117.88'	201°33'02"	315.27'
C9	25.00	37.44	N34°49'01"W	34.04'	85°48'15"	23.23'
C10	987.73	127.05	N04°24'01"E	126.96'	7°22'11"	63.61'
C11	920.30	384.08	N22°06'36"E	381.30'	23°54'43"	194.88'
C12	403.16	229.86	S17°43'58"W	226.75'	32°40'00"	118.15'
C13	1507.44	223.15	S05°38'25"W	222.95'	8°28'54"	111.78'
C14	25.00	40.32	S56°04'52"W	36.09'	92°24'00"	26.07'
C15	337.00	82.13	N32°22'53"E	81.93'	13°57'51"	41.27'
C16	1557.44	192.47	N21°51'33"E	192.35'	7°04'50"	96.36'
C17	1557.44	459.91	N09°51'33"E	458.24'	16°55'10"	231.64'
C18	353.16	201.35	N17°43'58"E	198.63'	32°40'00"	103.49'
C19	25.00	39.27	N79°03'58"E	35.36'	90°00'00"	25.00'
C20	975.00	66.78	S53°58'18"E	66.77'	3°55'28"	33.40'
C21	325.00	4.40	S48°38'01"E	4.40'	0°46'36"	2.20'
C22	25.00	36.63	S07°03'05"E	33.44'	83°56'28"	22.49'
C23	525.00	102.31	S29°20'10"W	102.15'	11°09'58"	51.32'
C24	50.00	78.89	N11°08'11"W	70.96'	90°24'18"	50.35'
C25	985.30	497.55	N18°21'57"E	492.28'	28°55'58"	254.20'
C26	921.00	576.35	N21°49'37"E	566.99'	35°51'18"	297.96'
C27	575.00	597.31	S19°34'47"W	570.81'	59°31'06"	328.76'
C28	375.00	270.65	S28°39'46"W	264.82'	41°21'10"	141.52'
C29	1507.44	566.19	S18°44'47"W	562.87'	21°31'12"	286.47'
C30	275.00	46.86	S14°52'52"E	46.80'	9°45'48"	23.49'
C31	325.00	193.04	S27°00'57"E	190.22'	34°01'58"	99.46'
C32	475.00	596.20	S08°04'29"E	557.82'	71°54'53"	344.57'
C33	1025.00	97.32	N53°12'50"W	97.28'	5°26'24"	48.70'
C34	1557.44	708.91	N21°01'34"E	702.81'	26°04'47"	360.71'
C35	325.00	234.57	N28°39'46"E	229.51'	41°21'10"	122.65'
C36	625.00	391.68	N31°23'09"E	385.30'	35°54'24"	202.51'
C37	475.00	66.59	S31°53'56"W	66.54'	8°01'58"	33.35'
C38	25.00	25.41	S65°01'54"W	24.33'	58°13'58"	13.92'
C39	60.00	301.32	S49°43'15"E	70.76'	287°44'17"	43.80'
C40	25.00	21.95	N11°33'36"E	21.25'	50°17'59"	11.74'
C41	525.00	739.84	N03°39'40"W	680.12'	80°44'32"	446.35'
C42	275.00	163.35	N27°00'57"W	160.95'	34°01'58"	84.16'
C43	325.00	17.06	N11°30'13"W	17.06'	3°00'29"	8.53'
C44	525.00	283.14	S60°47'50"W	279.72'	30°54'01"	145.10'
C45	375.00	368.39	S06°20'54"E	353.76'	56°17'10"	200.59'
C46	25.00	38.44	S22°15'02"E	34.76'	88°05'25"	24.18'
C47	525.00	527.22	S37°31'36"E	505.34'	57°32'17"	288.25'
C48	425.00	413.83	S19°08'15"W	397.68'	55°47'24"	224.98'
C49	475.00	199.89	S34°58'36"W	198.42'	24°06'43"	101.45'
C50	525.00	98.66	S25°16'48"W	98.51'	10°46'01"	49.47'
C51	475.00	197.51	S18°45'05"W	196.09'	23°49'26"	100.20'
C52	25.00	24.90	S21°41'26"E	23.88'	57°03'36"	13.59'
C53	60.00	79.61	S12°12'31"E	73.90'	76°01'26"	46.90'



- 1 LOT C-28  
D.B. 1012, PG. 893  
T.M. #0151202800
- 2 N/F  
BRINSER REALTY CO. LLC  
D.B. 972, PG. 773  
T.M. #0150004300
- 3 LOT C-25  
D.B. 982, PG. 2311  
T.M. #0151202500
- 4 LOT C-24  
D.B. 982, PG. 2311  
T.M. #0151202400
- 5 N/F  
BANK OF BOTETOURT  
D.B. 914, PG. 1278  
T.M. #0151202200
- 6 LOT C-15  
D.B. 981, PG. 217  
T.M. #0151201500
- 7 LOT C-13  
D.B. 1012, PG. 893  
T.M. #0151201300
- 8 COMMERCIAL LOT 14  
D.B. 894, PG. 193  
T.M. #0151201400
- 9 LOT C-50  
D.B. 1012, PG. 893  
T.M. #0151205000
- 10 PARKING LOT  
D.B. 839, PG. 809  
T.M. #0151205000



SURVEY PLAT FROM RECORDS FOR  
**WHITLOW & YUPELL, PLC,**  
 SUBSTITUTE TRUSTEE  
 SHOWING HEREON  
 THE REMAINING PORTION OF  
 TAX PARCEL #15-42  
 DEED BOOK 815, PAGE 1583  
**LAKEWATCH PLANTATION**  
 CONSISTING OF  
 TRACT 1 (16.653 ACRES)  
 TRACT 2 (20.495 ACRES)  
 TRACT 3 (13.934 ACRES)  
 TRACT 4 (17.879 ACRES)  
 TRACT 5 (16.406 ACRES)  
 TRACT 6 (20.366 ACRES)  
 TRACT 7 (25.923 ACRES)  
 TRACT 8 (17.739 ACRES)  
 TRACT 9 (84.666 ACRES)  
 GILLS CREEK MAGISTERIAL DISTRICT  
 FRANKLIN COUNTY, VIRGINIA  
 DATED MAY 20, 2015  
 JOB #05150161.HS  
 SCALE: 1" = 200'  
 SHEET 3 OF 3

