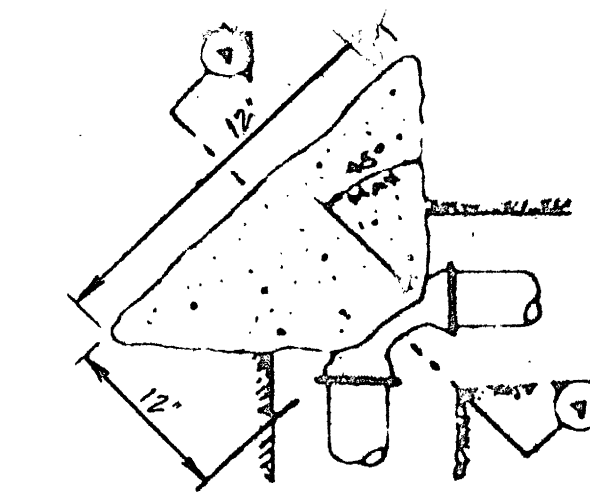
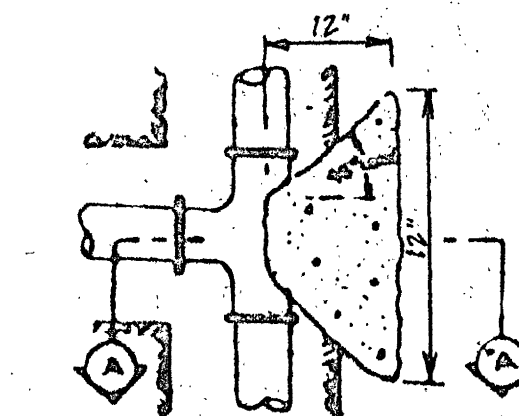


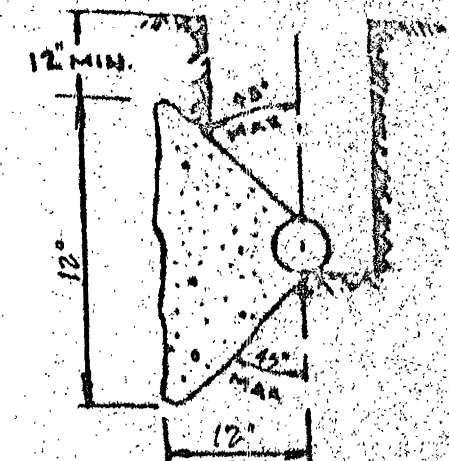
TYPICAL BEDDING DETAIL



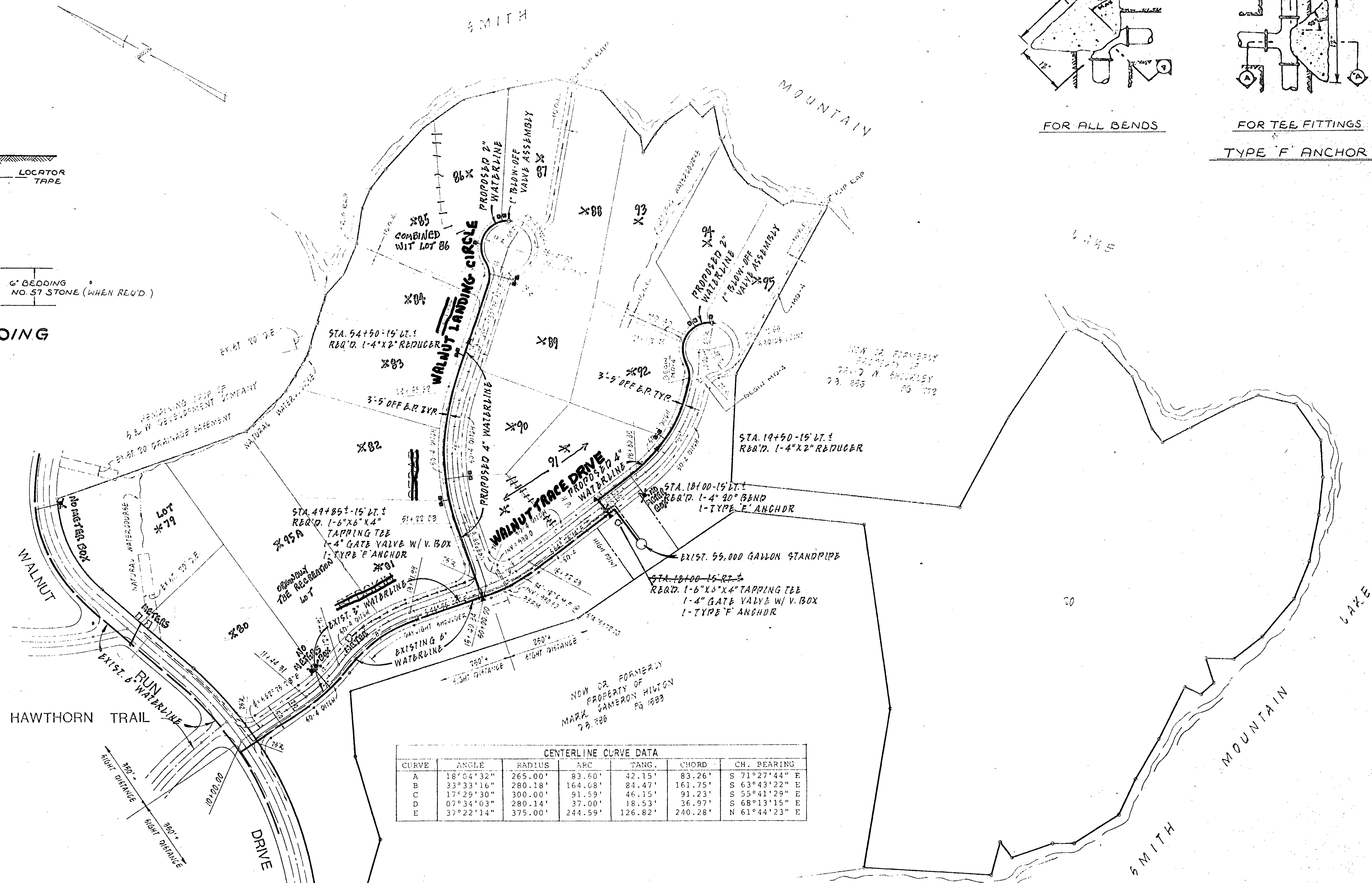
FOR ALL BENDS



FOR TEE FITTINGS  
TYPE F ANCHOR



SECTION A-A

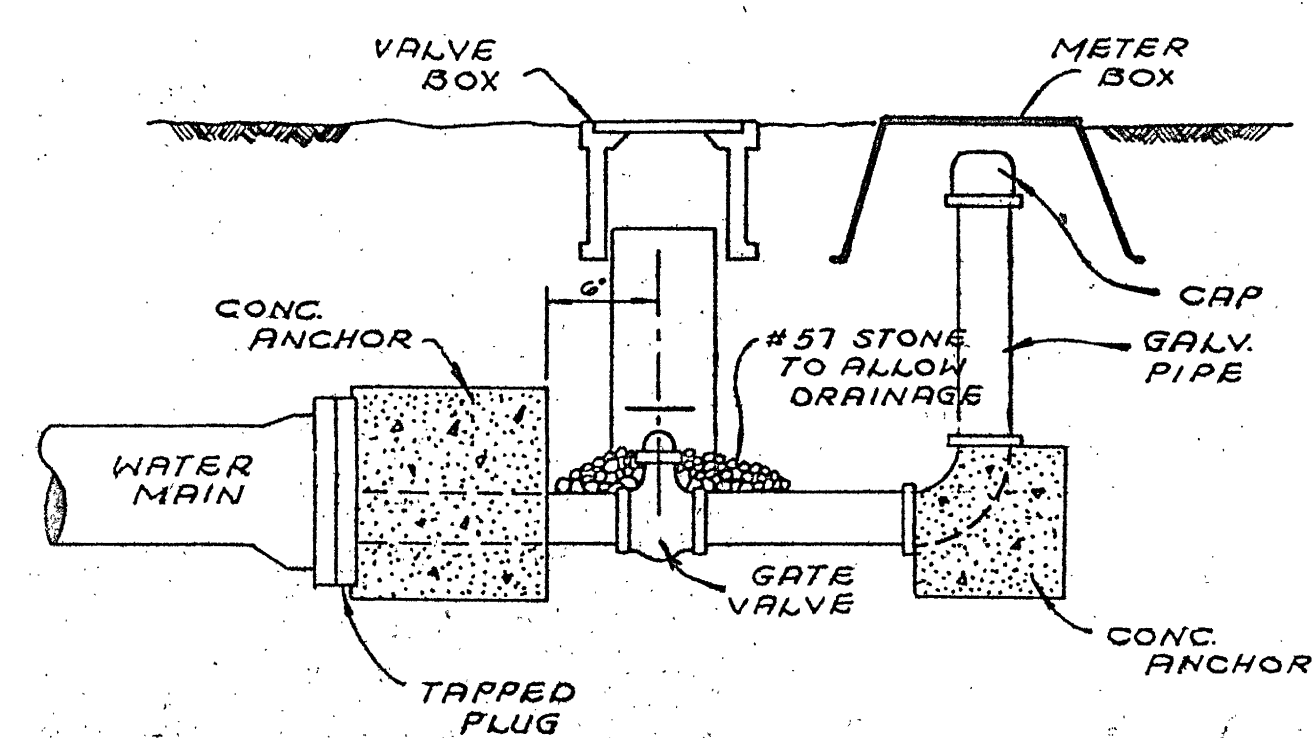


CENTERLINE CURVE DATA

CURVE	ANGLE	RADIUS	ARC	TANG.	CHORD	CH. BEARING
A	18°04'32"	265.00'	83.60'	42.15'	83.26'	S 71°27'44" E
B	33°33'16"	280.18'	164.68'	84.47'	161.75'	S 63°43'22" E
C	17°29'30"	300.00'	91.59'	46.15'	91.23'	S 55°41'29" E
D	07°34'03"	280.14'	37.00'	18.53'	36.97'	S 68°13'15" E
E	37°22'14"	375.00'	244.59'	126.82'	240.28'	N 61°44'23" E

NOTE:  
TIE ALL GATE VALVES TO TEES  
W/4 3/4" A-307 CADMIUM  
COATED TIE RODS.

- SINGLE METER CONNECTION
- DOUBLE METER CONNECTION



BLOW-OFF VALVE ASSEMBLY

WALNUT RUN CENTRAL WATER SYSTEM

PLAN  
OF  
SECTION No. 3

"WALNUT RUN"

GILLS CREEK MAGISTERIAL DISTRICT  
FRANKLIN COUNTY, VIRGINIA

PROPERTY OF  
S & W DEVELOPMENT COMPANY

SCALE: 1" = 100' DATE: 5-9-89

BERKLEY-HOWELL & ASSOCIATES, P.C.  
ENGINEERS - SURVEYORS - PLANNERS  
LYNCHBURG, VA. SMITH MTN. LAKE