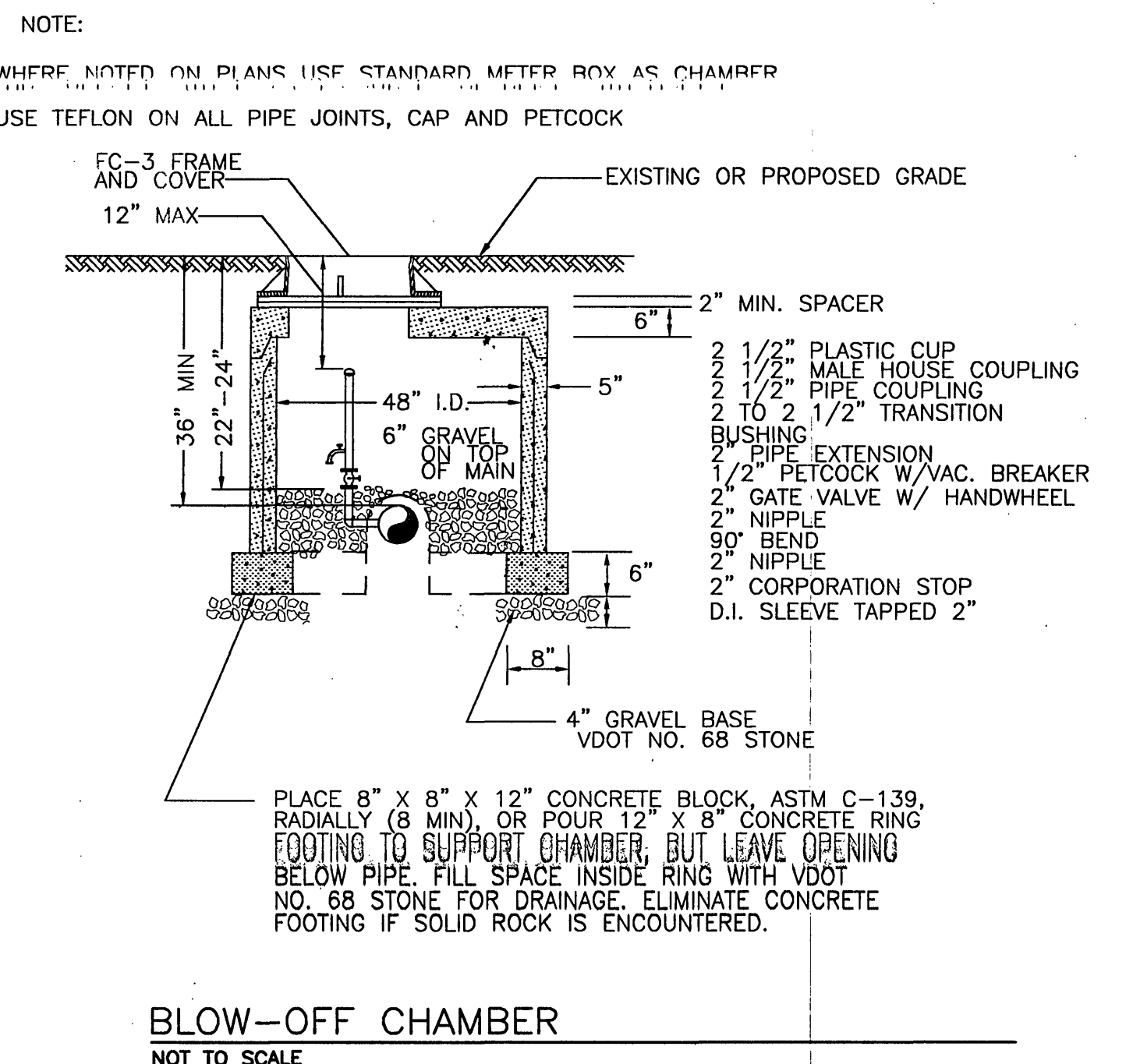
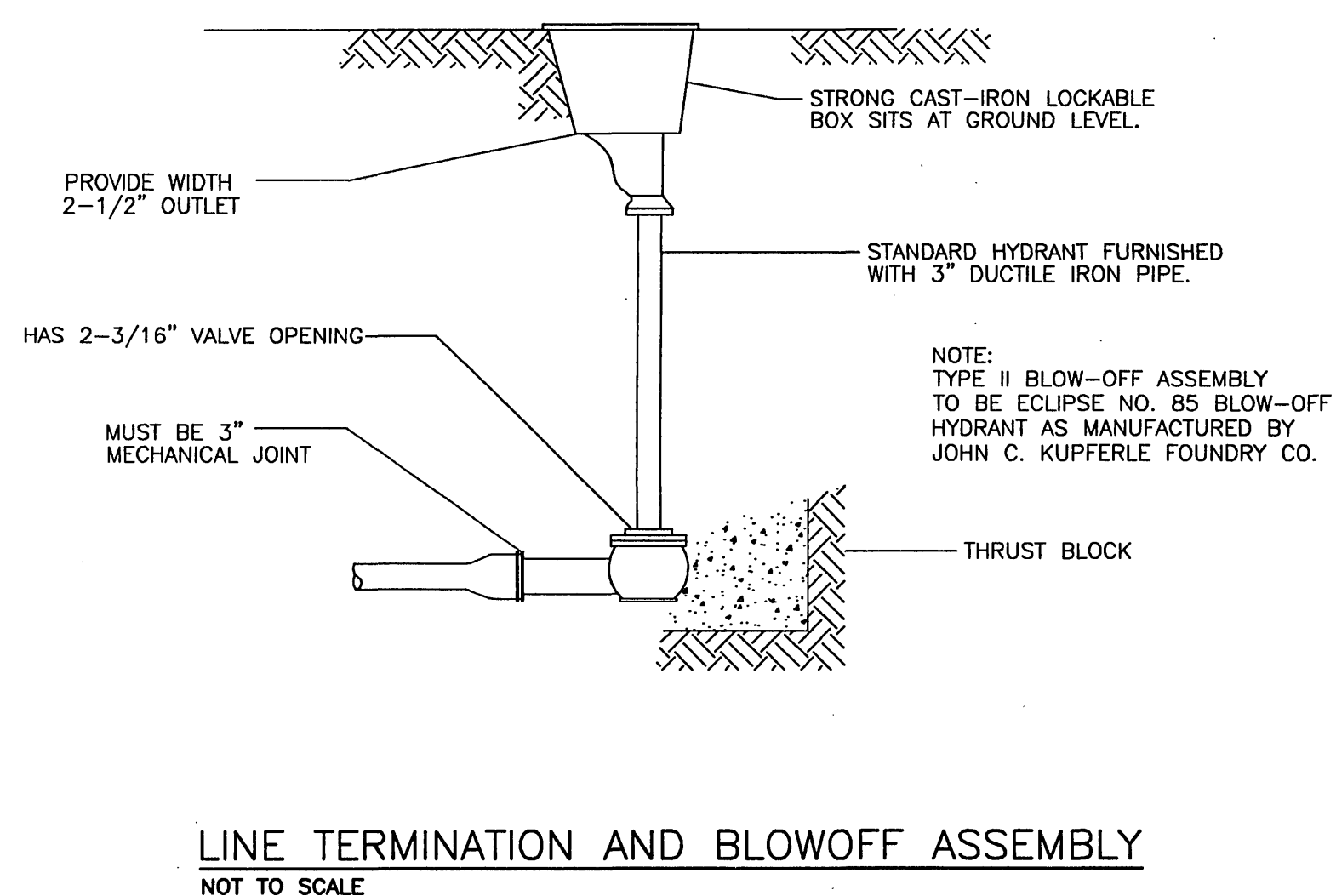
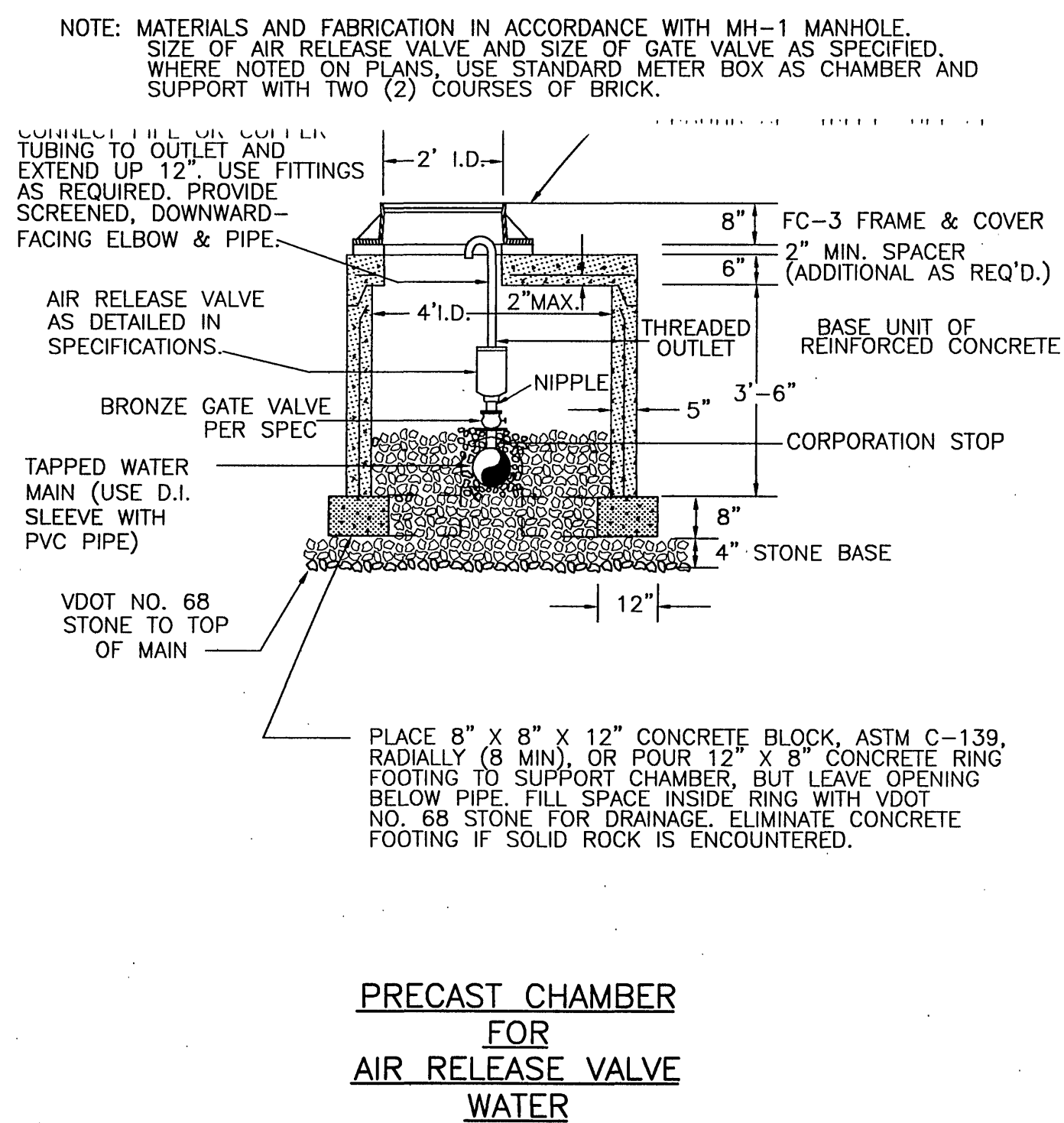
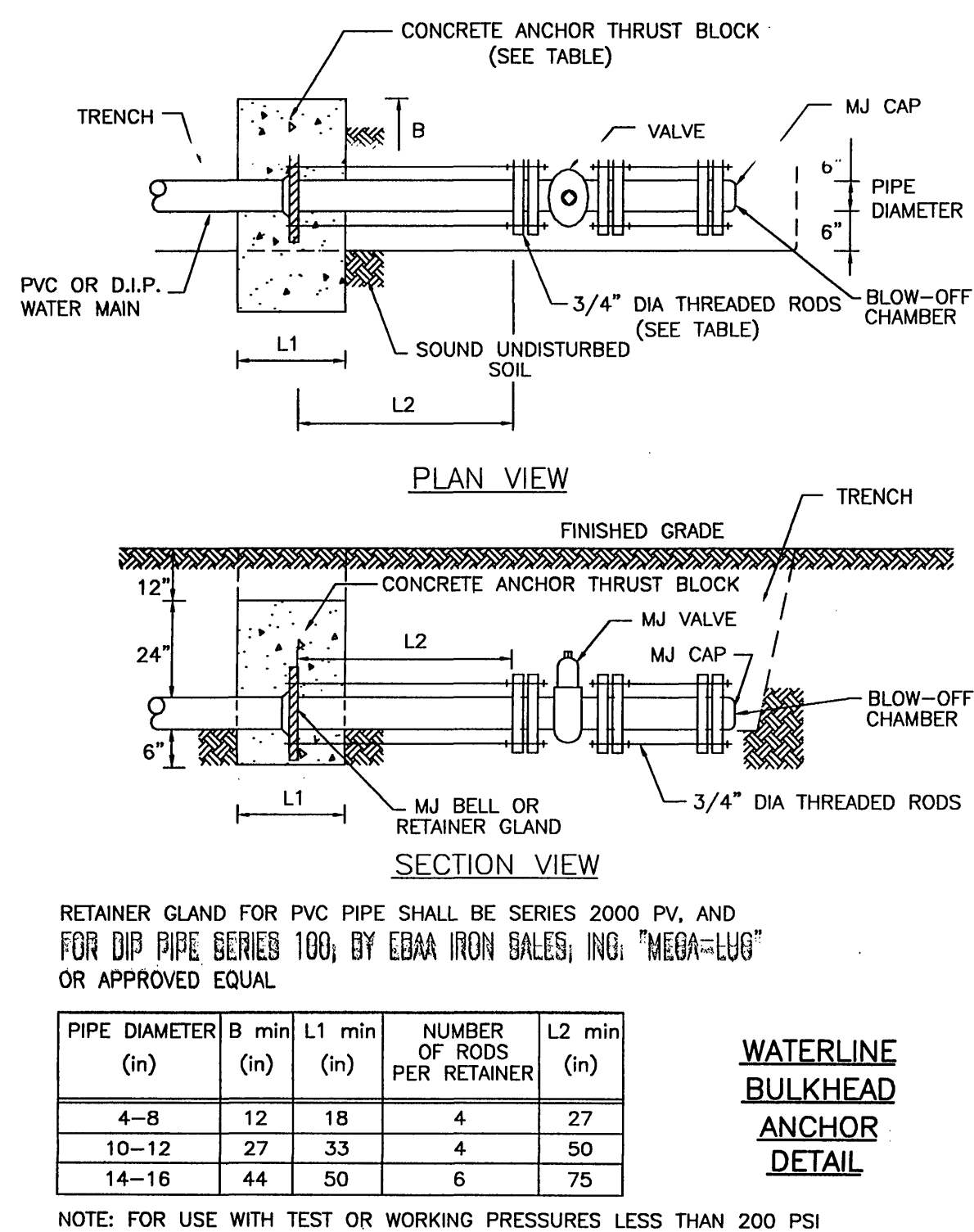
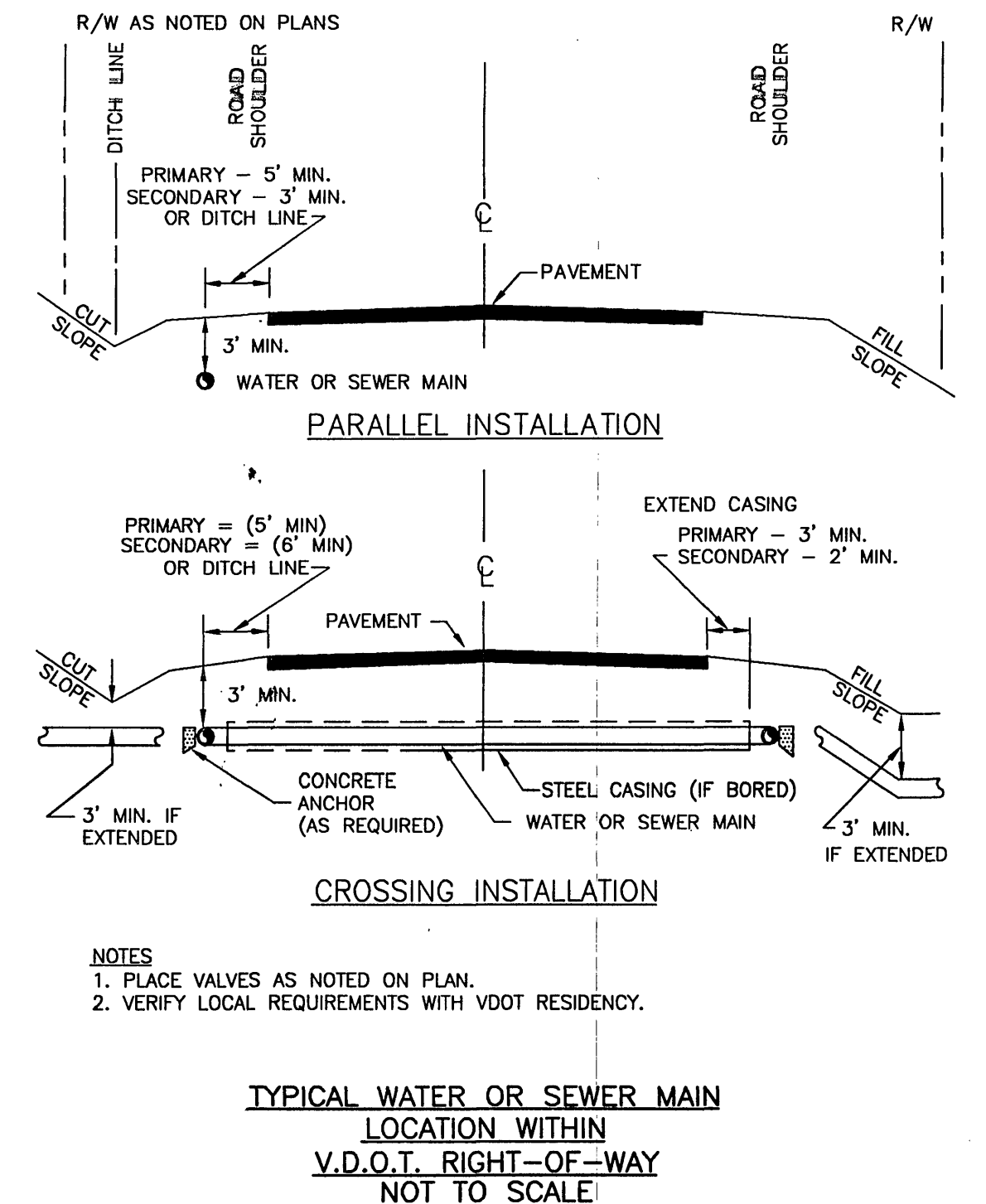
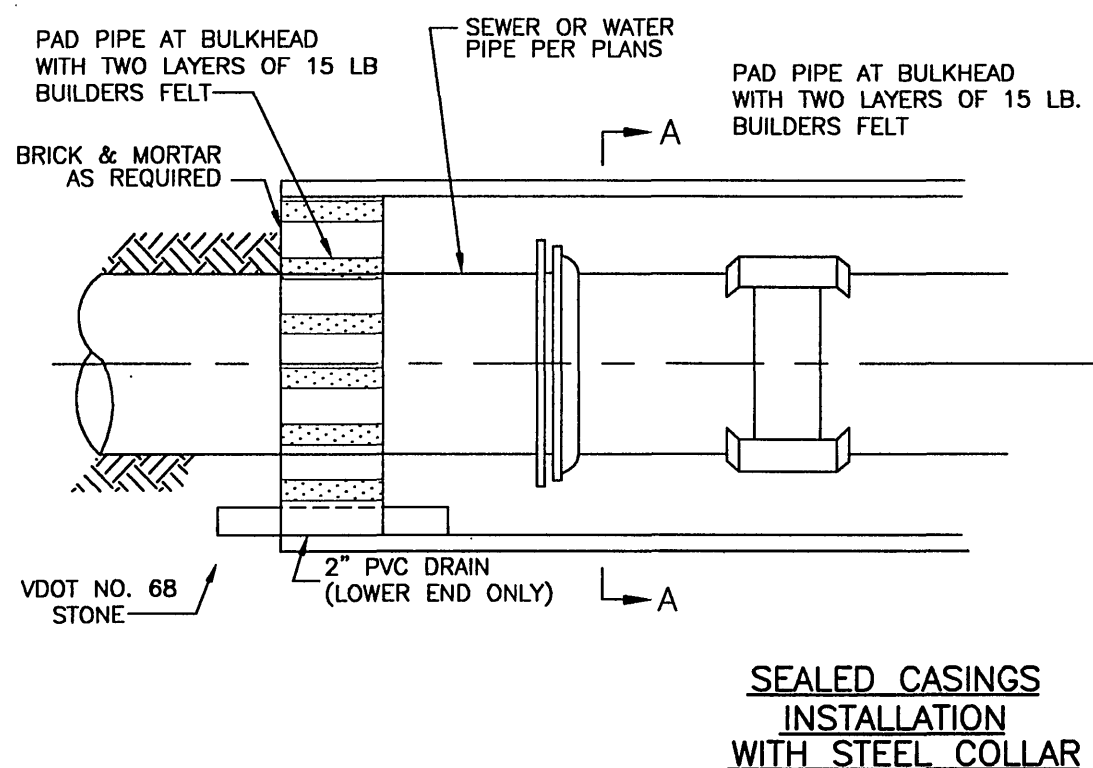
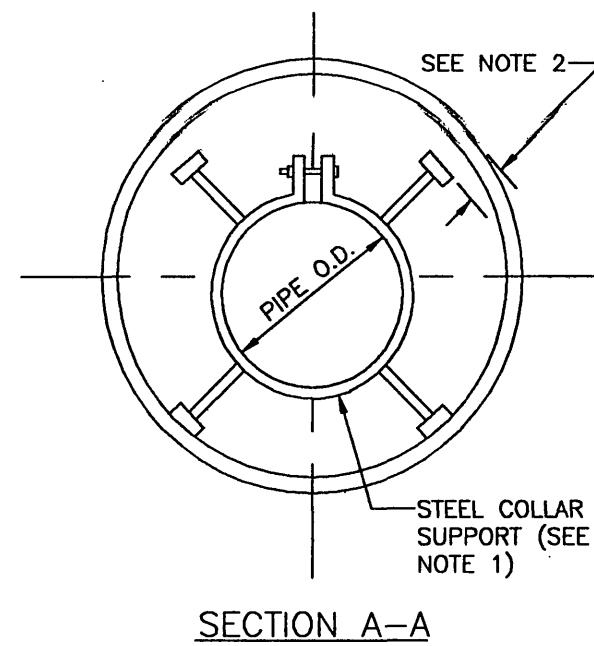


- NOTES
1. SINGLE-PIECE COLLAR SHOWN; 2-PIECE COLLAR USED FOR CARRIER PIPES 18" OR LARGER.
  2. DIMENSION AS NECESSARY TO PROVIDE MINIMUM CLEARANCE NEEDED TO SLIDE PIPE THROUGH CASING.
  3. THIS STANDARD APPLICABLE FOR 4" DIA. AND LARGER PIPE INSTALLED UNDER PRIMARY AND SECONDARY HIGHWAYS. FOR LINES SMALLER THAN 4", USE DUCTILE IRON PIPE FOR CASING AND MODIFY INSTALLATION ACCORDINGLY.
  4. CORRUGATED METAL PIPE SHALL NOT BE USED AS CASING.



NO.	REVISION	BY	DATE	NO.	REVISION	BY	DATE	DESIGNED BY: JPM/JMF	DRAWN BY: JMF	REVIEWED BY: DMJ	WVA NUMBER: 204141	PROJECT: THE VILLAGES AT EMERALD BAY WATER DISTRIBUTION SYSTEM FRANKLIN COUNTY, VIRGINIA	REVISION NUMBER: 0
												TITLE: DETAILS	DRAWING NUMBER: C-3
												DISCIPLINE: CIVIL	SHEET NUMBER: 4 OF 5
												SCALE: H: NTS V: NTS	
												DATE: 10-29-04	

