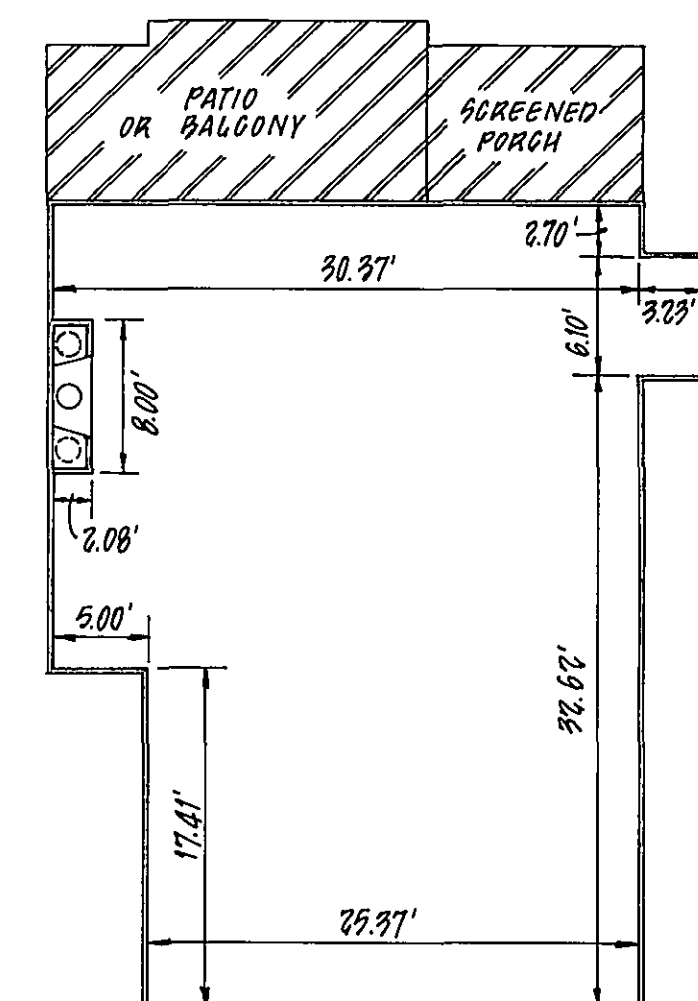


TYPE "A" UNIT
1,051 SQ. FT.

TYPE "A" UNITS	
NUMBERS	
BUILDING #1	
UNIT #	- 102
UNIT #	- 108
UNIT #	- 103
UNIT #	- 109
UNIT #	- 104
UNIT #	- 110
UNIT #	- 105
UNIT #	- 111
BUILDING #2	
UNIT #	- 202
UNIT #	- 208
UNIT #	- 203
UNIT #	- 209
UNIT #	- 204
UNIT #	- 210
UNIT #	- 205
UNIT #	- 211

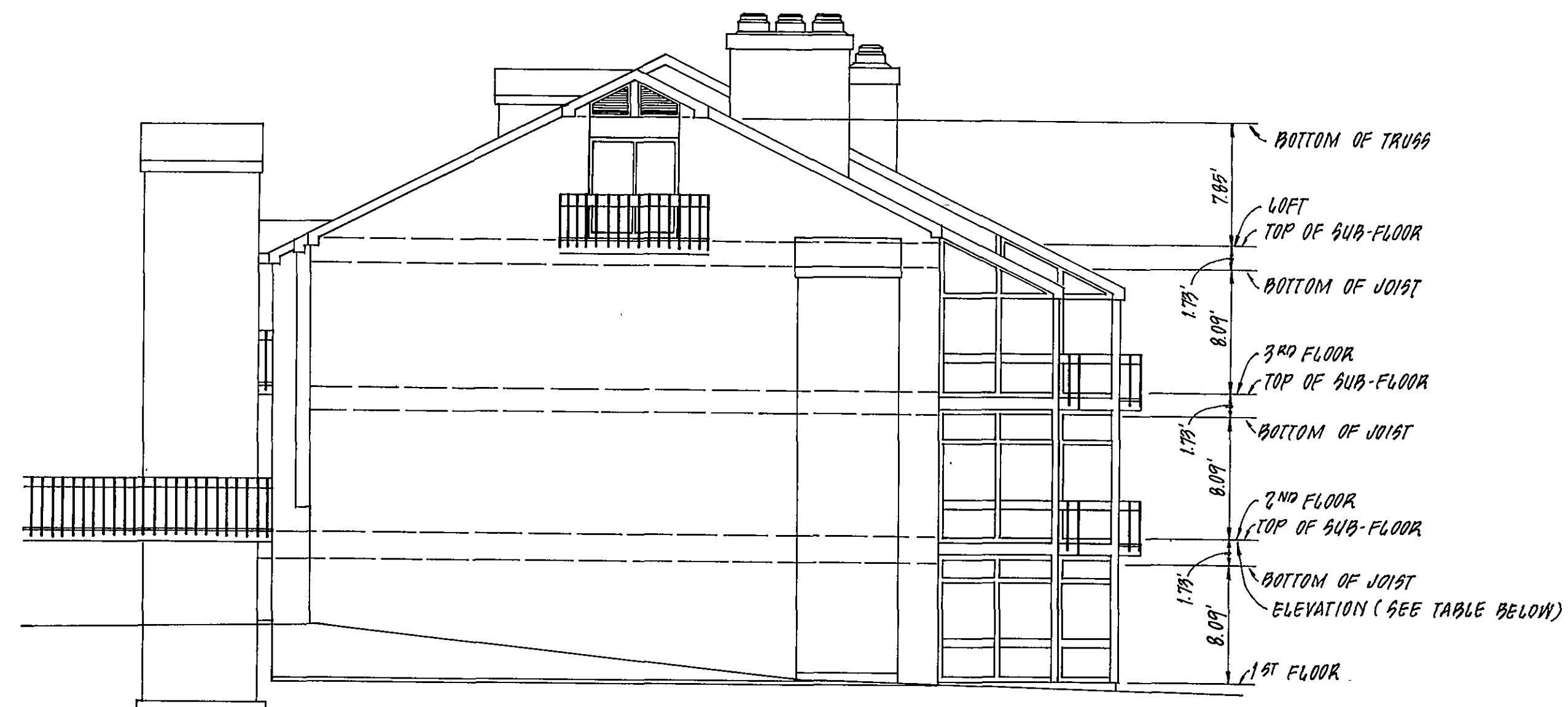


TYPE "C" UNIT
1.174 SQ. FT.

NOTE: UNIT #101, 107, ARE OPPOSITE HAND.
UNIT #201, 207, ARE OPPOSITE HAND.

TYPE "C" UNITS	
NUMBERS	
BUILDING #1	
UNIT #	- 101
UNIT #	- 107
UNIT #	- 106
UNIT #	- 112
BUILDING #2	
UNIT #	- 201
UNIT #	- 207
UNIT #	- 206
UNIT #	- 212


FIRST FLOOR ELEVATIONS (SUB FLOOR)	
BLDG. NO.	ELEVATION
1	831.89
2	835.89





RIGHT SIDE ELEVATION
(BUILDINGS 1 & 2)


LEGEND:

VERTICAL DATUM - U.S.G.S. MEAN SEA LEVEL

 - DENOTES LIMITED COMMON AREA

 - DENOTES GENERAL COMMON AREA

 - AREA OF UNIT (SQ. FT.)

 - ORIENTATION FOR PLAN VIEWS

NOTE: REFERENCE IS HEREBY MADE TO PLAT OF GANGPLANK POINTE
CONDOMINIUM PHASE I RECORDED IN D.B. 384 PG. 1367.

NOTES:

1. INCLUDED AS PART OF EACH UNIT IS THE DRY WALL COVERING ENCLOSING SUCH UNIT. ALL INTERIOR DIMENSIONS SHOWN ON THIS PLAT ARE MEASURED TO THE INSIDE FACE OF STUDS OR TO THE INSIDE FACE OF CONCRETE FOUNDATION WALLS.
2. SQUARE FOOTAGE SHOWN DOES NOT INCLUDE AREA FOR FIREPLACE, PATIOS, BALCONIES OR STORAGE ROOMS.
3. ALL VERTICAL DIMENSIONS ARE MEASURED FROM SUB-FLOOR TO BOTTOM OF JOISTS.
4. UNIT DIMENSIONS SHOWN ARE TYPICAL AND ARE BASED UPON THE MEDIAN OF FIELD MEASUREMENTS OF ALL UNITS. SUBSTANTIALLY ALL DIMENSIONS FALL WITHIN A TOLERANCE OF 0.08 FEET OF THOSE SHOWN.

PLAT
OF
GANGPLANK POINTE CONDOMINIUM
PHASE 2

GILLS CREEK MAGISTERIAL DISTRICT
FRANKLIN COUNTY, VIRGINIA

PROPERTY OF
GANGPLANK POINTE PARTNERSHIP

BEING
SECTION No. 9 THE WATERFRONT
PHASE II OF GANGPLANK POINTE

SCALE : 1" = 10' DATE : 6 MAY 1985



BUFORD T. LUMSDEN & ASSOCIATES, P.C.
ENGINEERS - SURVEYORS
ROANOKE, VIRGINIA

82-342

SHEET # 3 OF 4