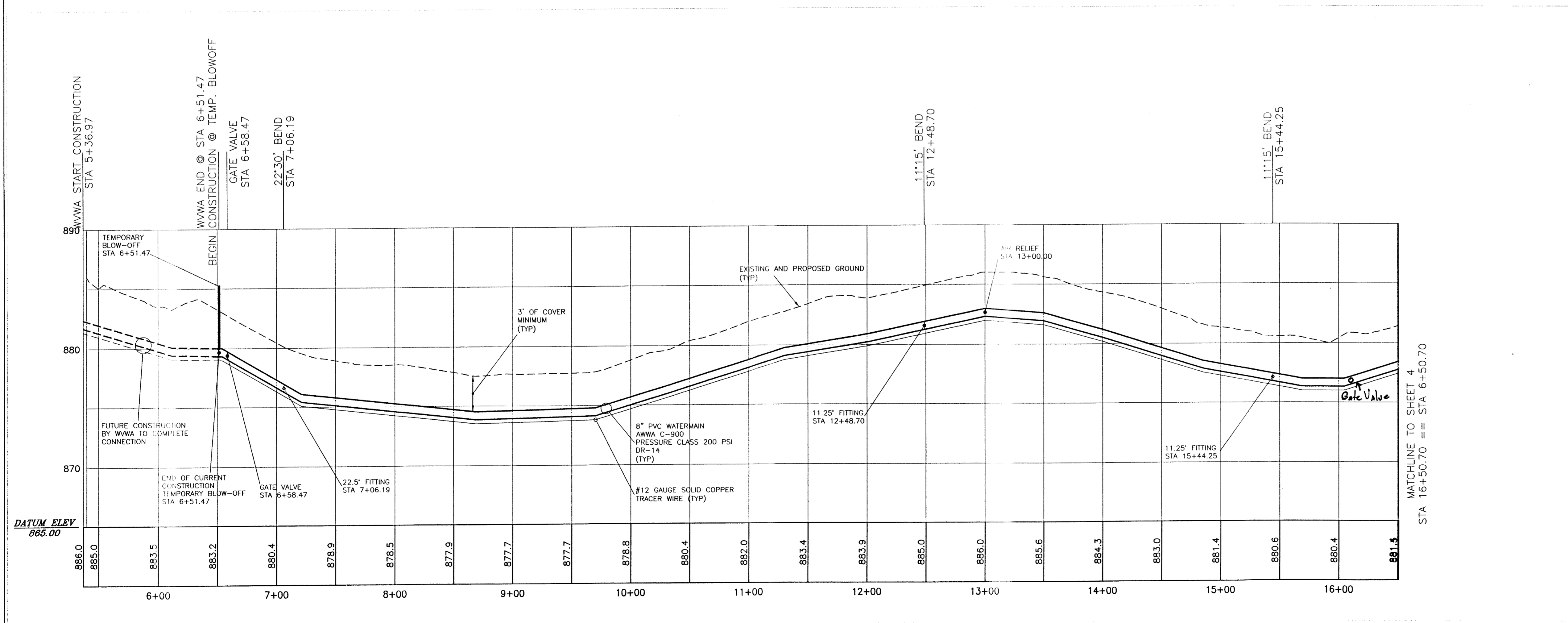
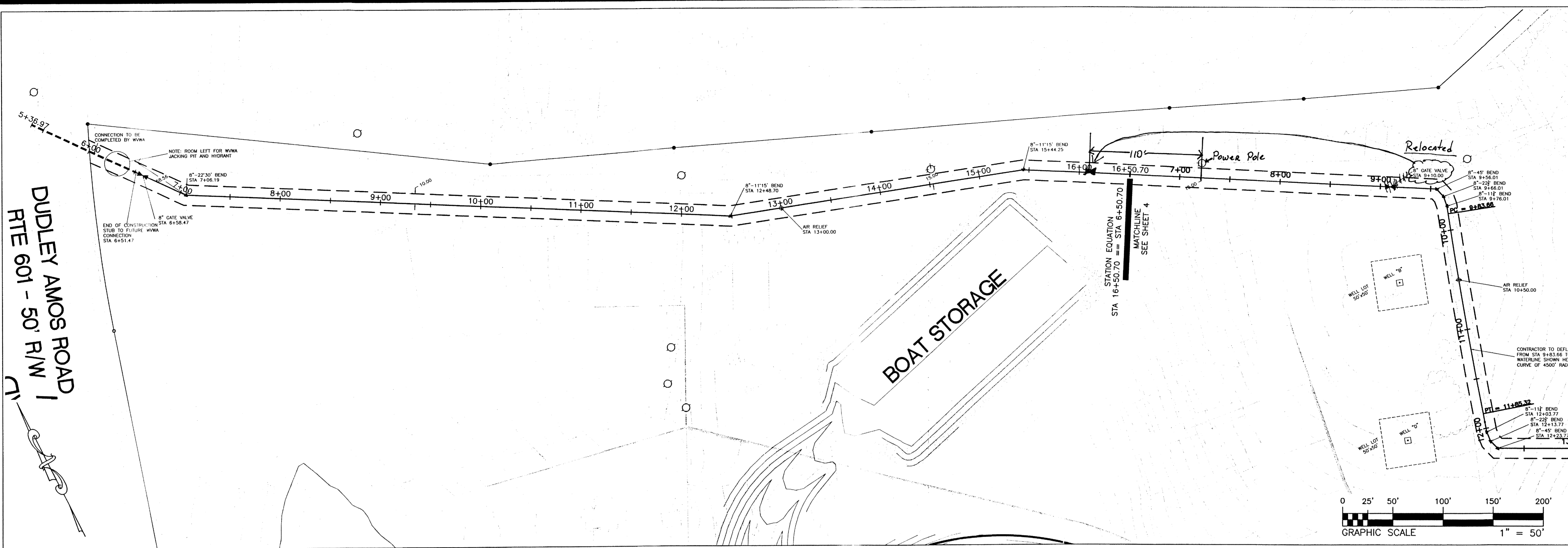


DUDLEY AMOS ROAD
RTE 601 - 50' R/W



AS-BUILT'S

SCALE
1" = 50' HORIZ.
1" = 5' VERT.

REVISIONS	DESCRIPTION	DATE	APPROVAL

Stone Engineering
P.O. BOX 1058
Rocky Mount, Virginia 24151
(540) 483-0078
(540) 483-5250 fax

DESIGN	CDS
DRAFT	CDS
CHECK	RDS

PLAN & PROFILE - COUNTY FEED LINE
THE LAKEWATCH CLUB
LOCATED ON DUDLEY AMOS ROAD - S.R. 601
GILLS CREEK MAGISTERIAL DISTRICT
FRANKLIN COUNTY, VIRGINIA

DATE	01/21/10
SCALE	AS SHOWN
SHEET	3A OF 13
PROJECT NUMBER	08094