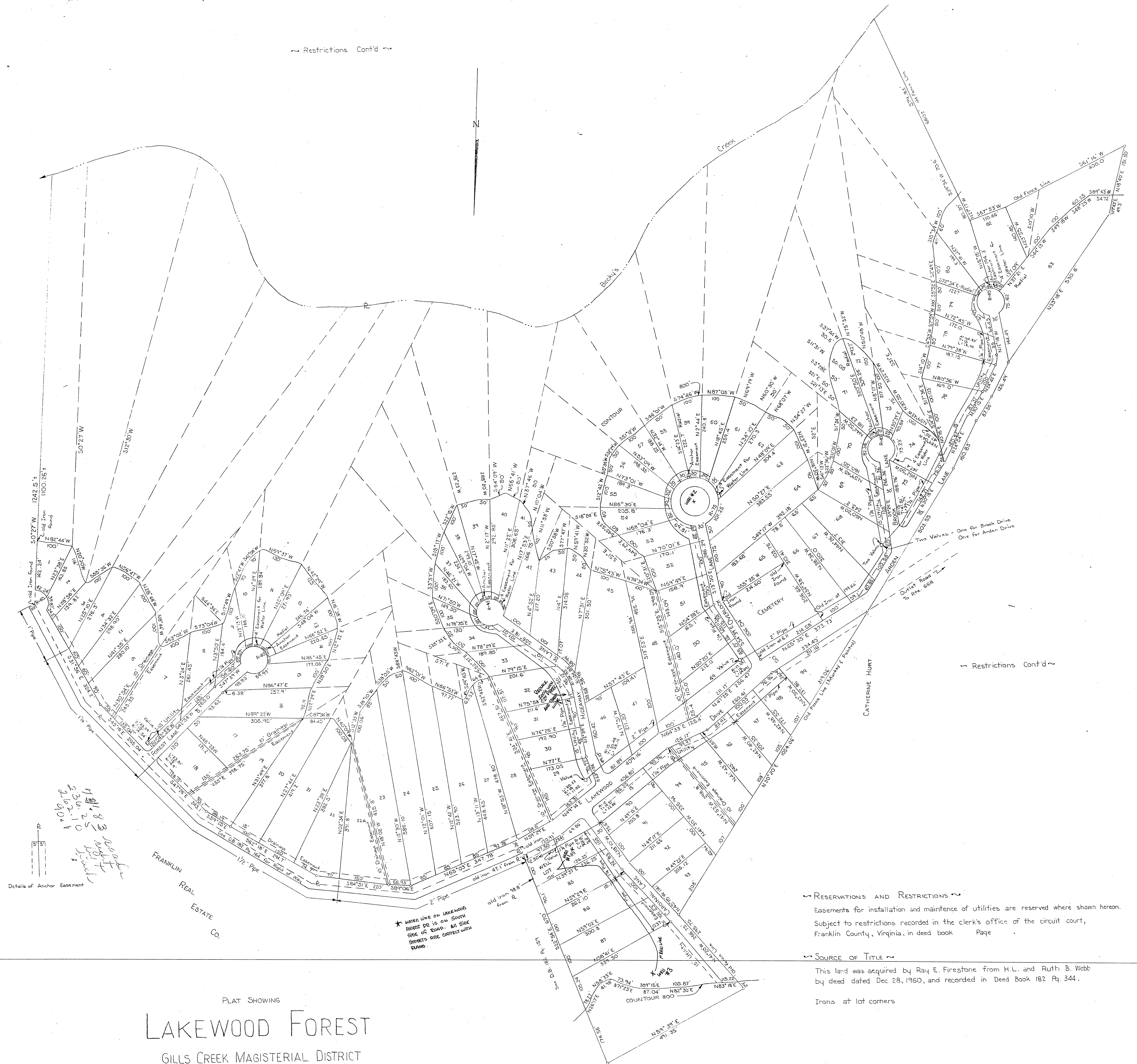


~ Restrictions Cont'd ~



~ Restrictions Cont'd ~

RESERVATIONS AND RESTRICTIONS ~
Easements for installation and maintenance of utilities are reserved where shown hereon.
Subject to restrictions recorded in the clerk's office of the circuit court,
Franklin County, Virginia, in deed book Page
SOURCE OF TITLE ~
This land was acquired by Ray E. Firestone from H.L. and Ruth B. Webb
by deed dated Dec. 28, 1960, and recorded in Deed Book 182 Pg. 344.
Irons at lot corners

PLAT SHOWING
LAKEWOOD FOREST
GILLS CREEK MAGISTERIAL DISTRICT
FRANKLIN COUNTY
VIRGINIA

PROPERTY OF RAY E. AND MARY FRANCES FIRSTONE
Scale: 1" = 100' DATE: July 29, 1961
ERSKINE W. PROFFITT, C.L.S.