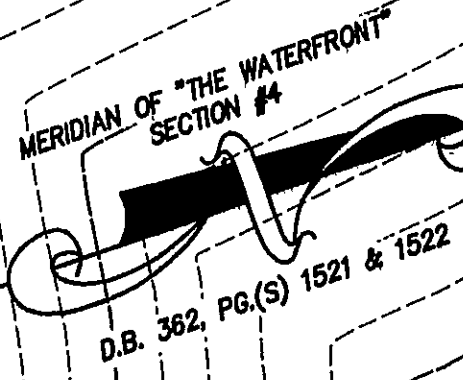
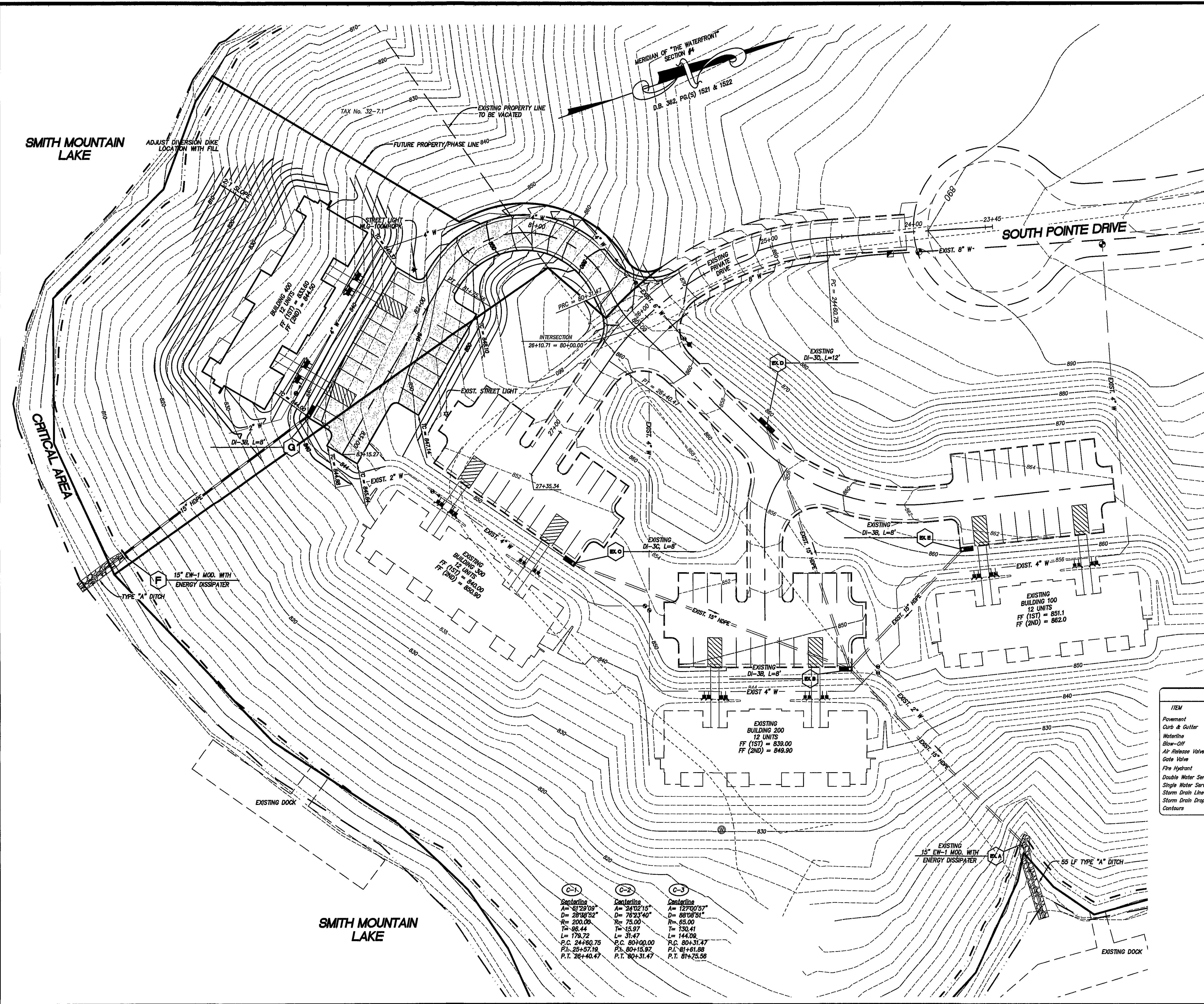


SMITH MOUNTAIN LAKE



SMITH MOUNTAIN LAKE

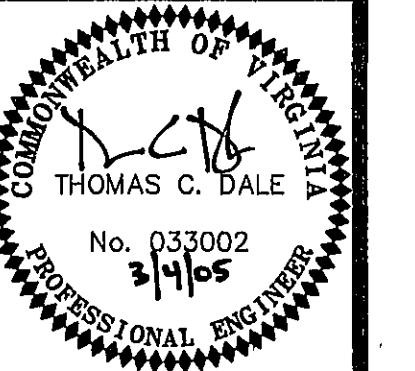
Centerline	Centerline	Centerline
A = 61°28'08"	A = 24°02'15"	A = 127°00'57"
D = 28°38'52"	D = 76°23'40"	D = 88°08'51"
R = 200.00	R = 75.00	R = 85.00
Ta = 98.44	Ta = 15.97	Ta = 33.41
L = 179.72	L = 31.47	L = 144.06
P.C. 24+60.75	P.C. 80+00.00	P.C. 80+31.47
P.T. 25+57.19	P.T. 80+15.97	P.T. 81+61.88
P.T. 26+40.47	P.T. 80+31.47	P.T. 81+75.58

ITEM	EXISTING	PROPOSED
Pavement		=====
Curb & Gutter		=====
Waterline	---	---
Blow-Off	---	---
Air Release Valve		○
Gate Valve		○
Fire Hydrant	○	○
Double Water Service Meter		○
Single Water Service Meter		○
Storm Drain Line		---
Storm Drain Drop Inlet		○
Contours	1000	1000

LUMSDEN ASSOCIATES, P.C.  
ENGINEERS-SURVEYORS-PLANNERS  
ROANOKE, VIRGINIA

4654 BRAMBLETON AVENUE  
P.O. BOX 2000  
ROANOKE, VIRGINIA 24018

PHONE: (540) 774-4411  
FAX: (540) 772-9445  
E-MAIL: MAIL@LUMSDENPC.COM



GRADING PLAN

SOUTH POINTE CONDOMINIUMS - BUILDING 400  
AT THE WATERFRONT - PREPARED FOR  
WILLARD CONSTRUCTION OF  
ROANOKE VALLEY, INC.  
GILLS CREEK MAGISTERIAL DISTRICT  
FRANKLIN COUNTY, VIRGINIA

NO.	DATE	DESCRIPTION
1		
2		
3		
4		
5		

DATE: MARCH 04, 2005  
SCALE: 1" = 30'  
COMMISSION NO. 2001-389  
CADD FILE: C:\GIS\ENR\BLDG 400\38900MP1.dwg  
SHEET 5 OF 10