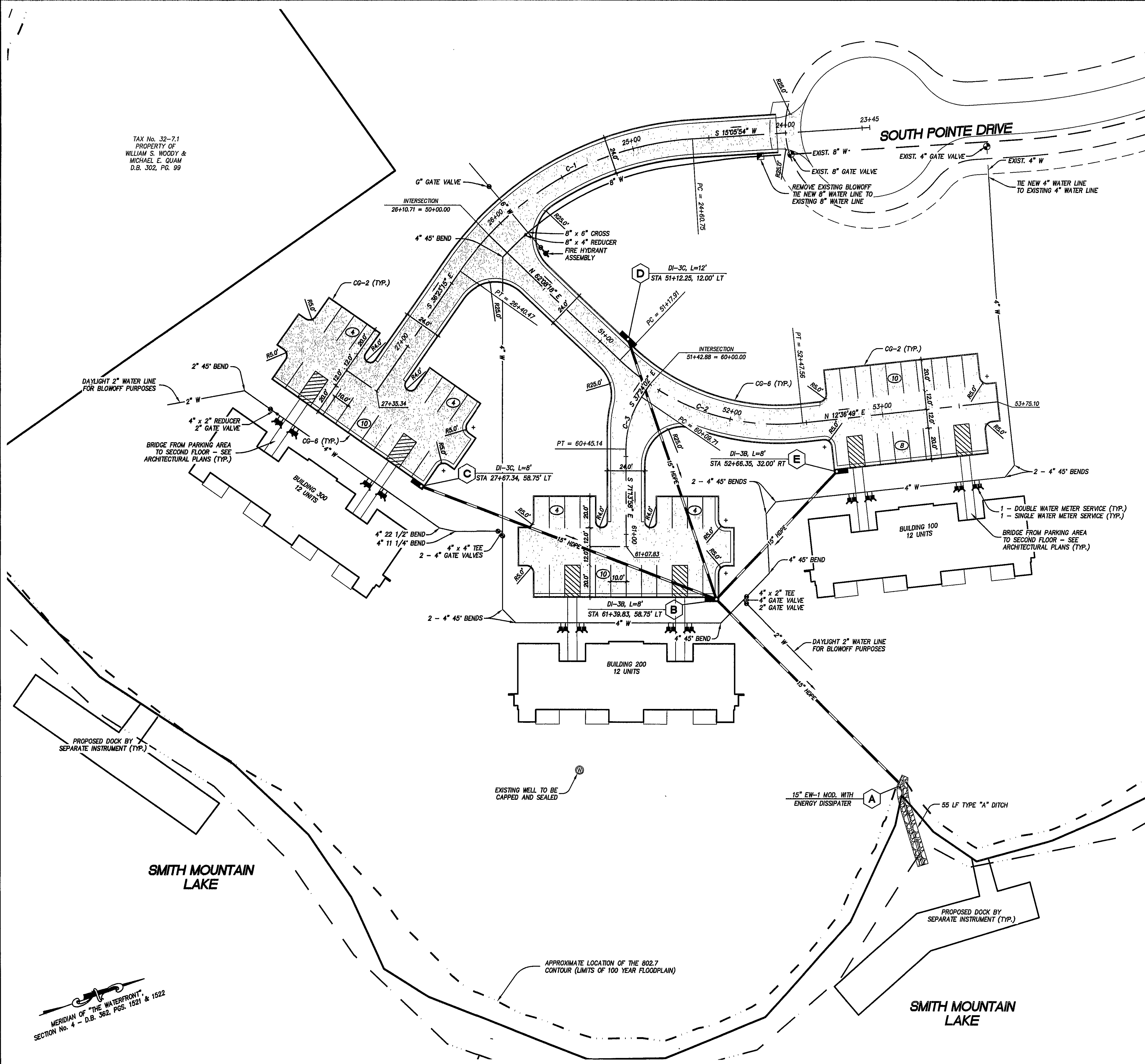


TAX No. 32-7.1  
PROPERTY OF  
WILLIAM S. WOODY &  
MICHAEL E. QUAM  
D.B. 302, PG. 99

NOTES:

1. FOR SANITARY SEWER DRAINFIELD, PUMP, AND FORCE MAIN DESIGN AND DETAILS, SEE  
SANITARY SEWAGE DISPOSAL PLANS FOR SOUTH POINTE CONDOMINIUMS AT THE  
WATERFRONT BY LUMSDEN ASSOCIATES, P.C.



LEGEND		
ITEM	EXISTING	PROPOSED
Pavement	---	---
Curb and Gutter	---	---
Curb	---	---
Storm Drain Line	--- EX. 24" CONC. ---	--- 24" CONC. ---
Waterline	---	---
Hydrant	⊙	⊙
Contours	--- 1020 ---	--- 1020 ---

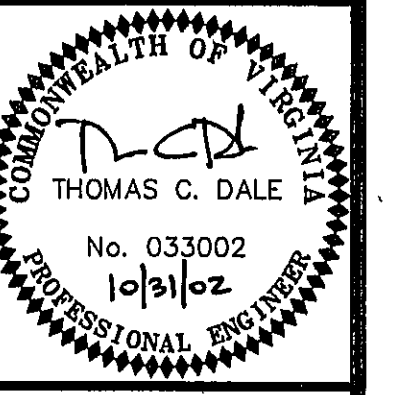
Centerline	Centerline	Centerline
<b>C-1</b>	<b>C-2</b>	<b>C-3</b>
A= 5123.09"	A= 4931.29"	A= 3349.57"
D= 2838.52"	D= 3811.50"	D= 9529.35"
R= 200.00	R= 150.00	R= 60.00
T= 96.44	T= 69.19	T= 18.25
L= 179.72	L= 128.66	L= 35.43
P.C. 24+80.75	P.C. 51+17.91	P.C. 60+09.71
P.I. 25+57.19	P.I. 51+87.10	P.I. 60+27.96
P.T. 26+40.47	P.T. 52+47.56	P.T. 60+45.14

MERIDIAN OF "THE WATERFRONT"  
SECTION No. 4 - D.B. 362, PGS. 1521 & 1522

LUMSDEN ASSOCIATES, P.C.  
ENGINEERS-SURVEYORS-PLANNERS  
ROANOKE, VIRGINIA

1464 BRIMBLETON AVENUE  
P.O. BOX 20565  
ROANOKE, VIRGINIA 24018

PHONE: (540) 774-4411  
FAX: (540) 774-9443  
EMAIL: MAIL@LUMSDENPC.COM



DIMENSIONAL  
LAYOUT

SOUTH POINTE CONDOMINIUMS  
AT THE WATERFRONT  
PREPARED FOR  
WILLARD CONSTRUCTION OF  
ROANOKE VALLEY, INC.  
GILLS CREEK MAGISTERIAL DISTRICT  
FRANKLIN COUNTY, VIRGINIA

NO.	DATE	DESCRIPTION
1	10/09/02	REVISED ROAD GRABES OFF CHIL DE SAC
2		
3		
4		
5		

DATE: OCTOBER 9, 2002  
SCALE: 1" = 30'  
COMMISSION NO.: 2001-389  
CADD FILE: P:\2001\10288\END\389COMP.DWG