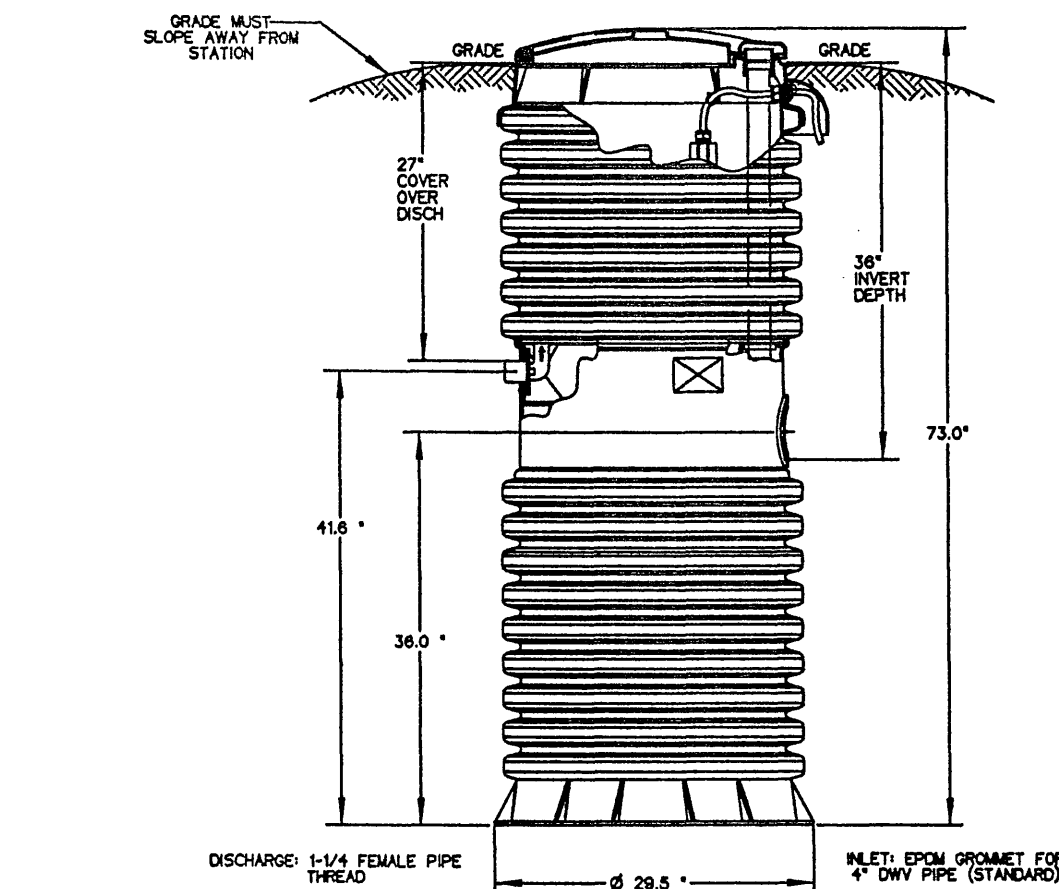
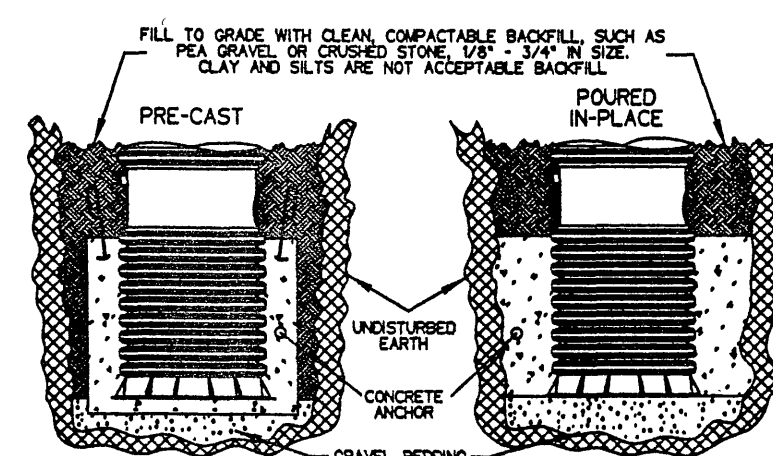


PUMP STATION GENERAL CONFIGURATION



**SEE INSTALLATION INSTRUCTIONS FOR FURTHER DETAILS

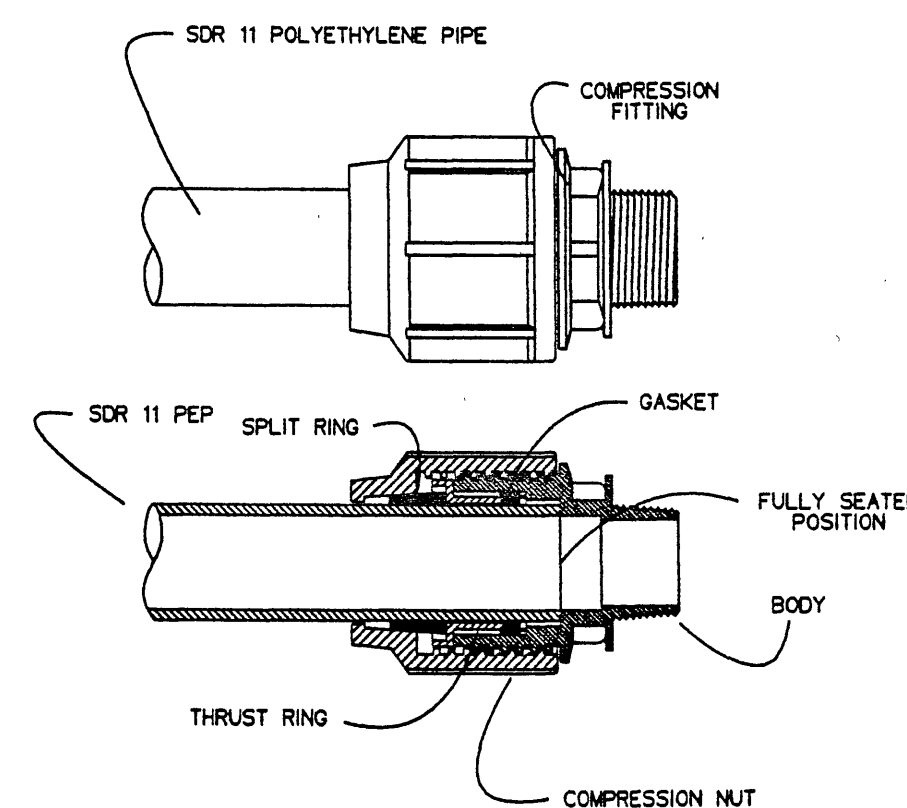
NOTE: A CONCRETE ANCHOR OF 2000 LBS (13.2 cu ft) IS REQUIRED ON ALL MODEL 2010 74" STATIONS.



MODEL 2010-74

E-ONE MODEL
2010-74

COMPRESSION FITTING DETAIL

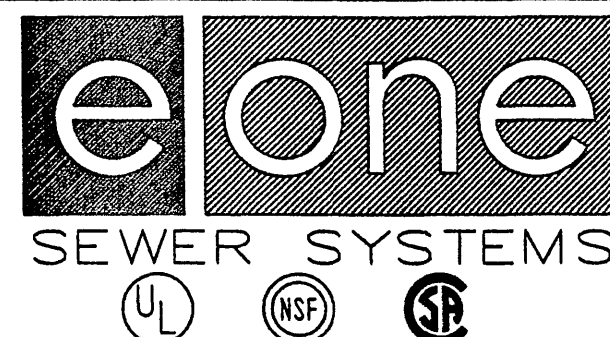
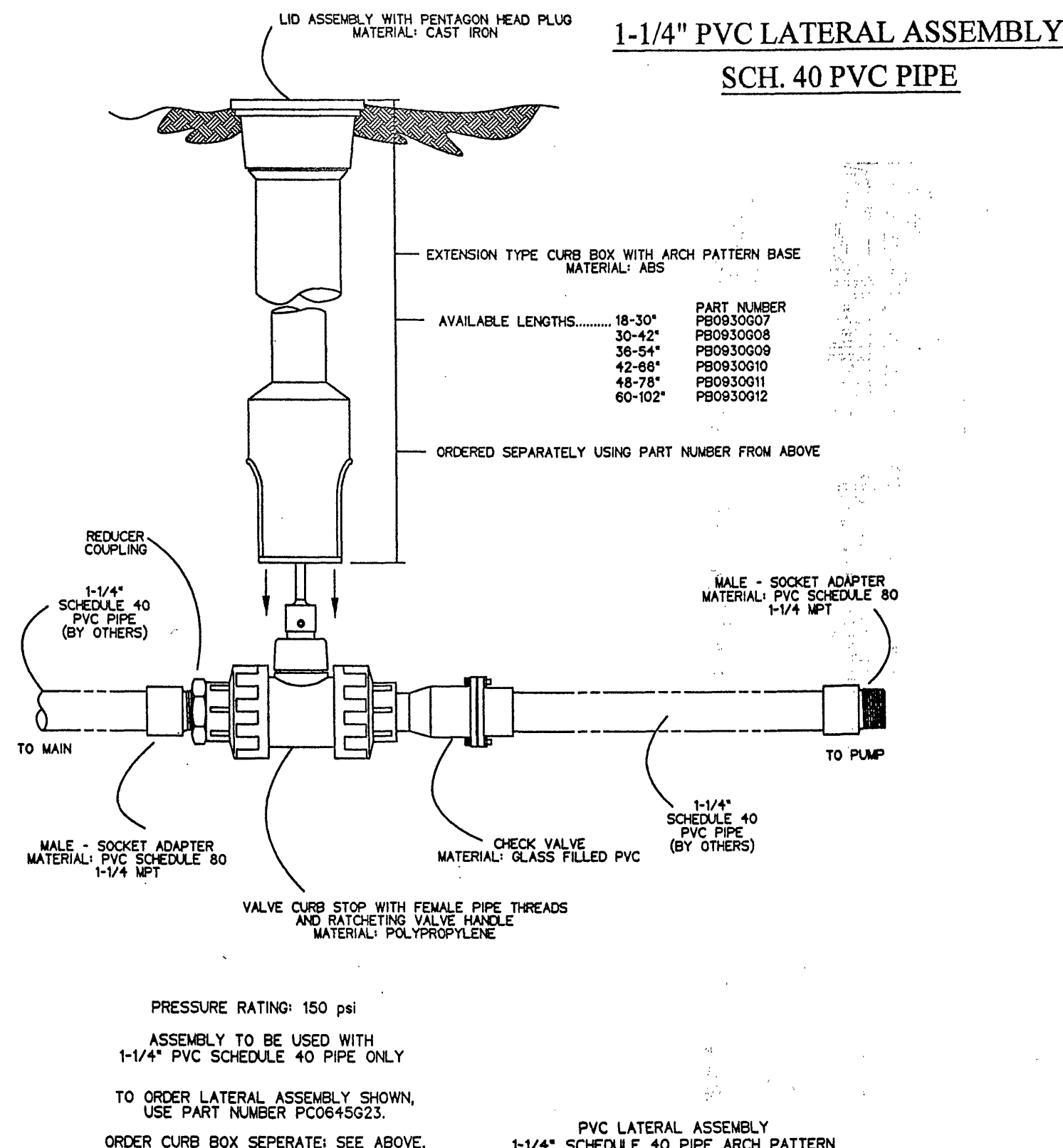


INSTALLATION STEPS

- 1- CUT PIPE SQUARE.
- 2- MAKE SURE PIPE IS ROUND, NOT FLATTENED. CLEAN OFF ANY DIRT SO THAT THE SURFACE IS SMOOTH.
- 3- INSERT PIPE THROUGH COMPRESSION NUT. POSITION SPLIT RING ON THE END OF PIPE WITH THE TAPERED END TOWARD THE COMPRESSION NUT.
- 4- SLIDE COMPRESSION NUT OVER SPLIT RING AND ALIGN IT WITH THE THREADS ON THE BODY.
- 5- INSERT PIPE INTO THE BODY OF THE FITTING UNTIL FIRMLY SEATED.
- 6- TIGHTEN COMPRESSION NUT SECURELY TO THE FITTING BODY.

PRECAUTIONS

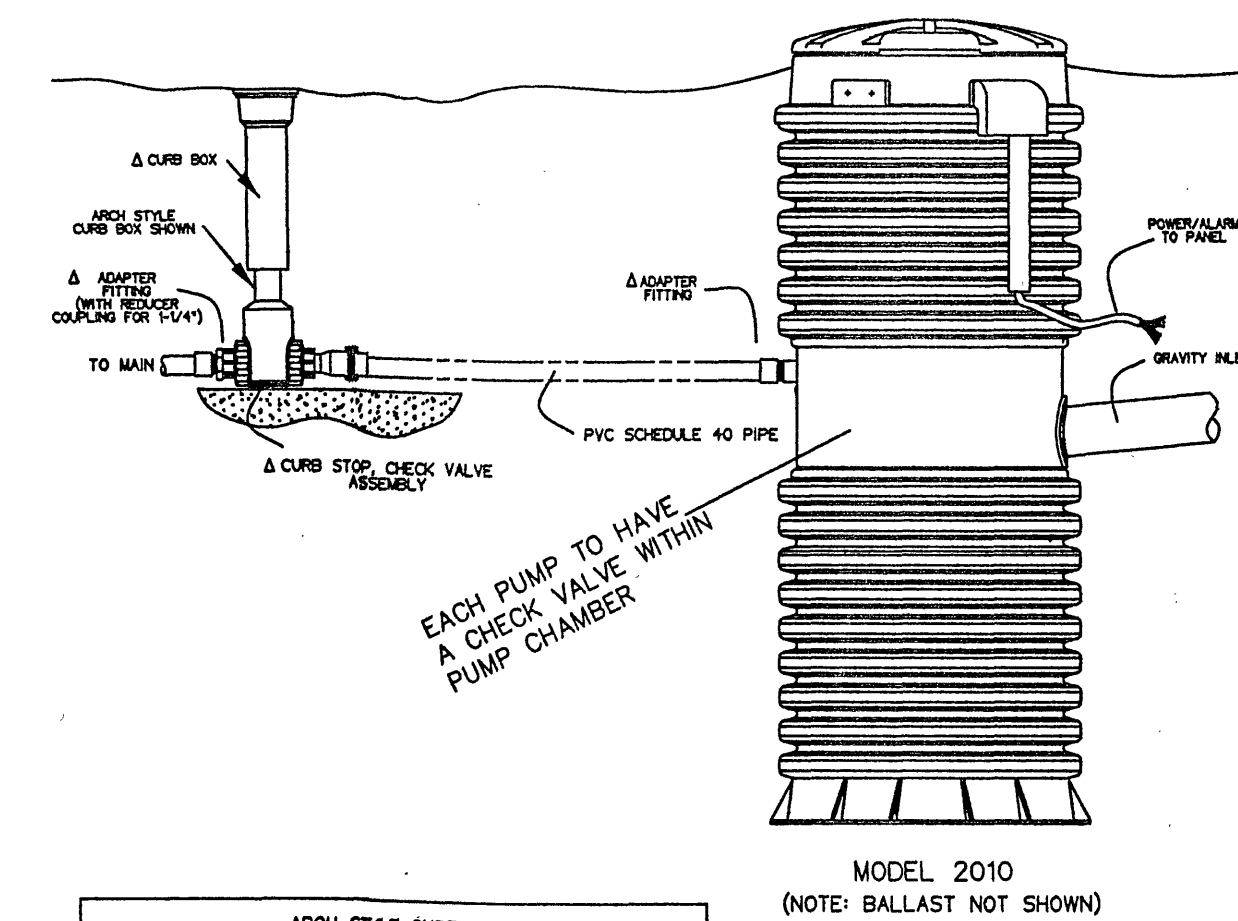
- 1- ALWAYS PRESSURE TEST FOR LEAKS PRIOR TO BACKFILLING.
- 2- FITTINGS CAN BE DAMAGED BY IMPROPER HANDLING. PROTECT THREADS. DO NOT DROP. BACKFILL AND COMPACT CAREFULLY PER ASTM D2321 SO THAT FITTINGS ARE NOT STRESSED BY THE WEIGHT OF THE EARTH.
- 3- PROTECT BALL VALVE ASSEMBLIES FROM FREEZING. ATTEMPTING TO FORCIBLY OPEN OR CLOSE A FROZEN VALVE WILL DESTROY THE VALVE.



LOW PRESSURE SYSTEM FORCE MAIN

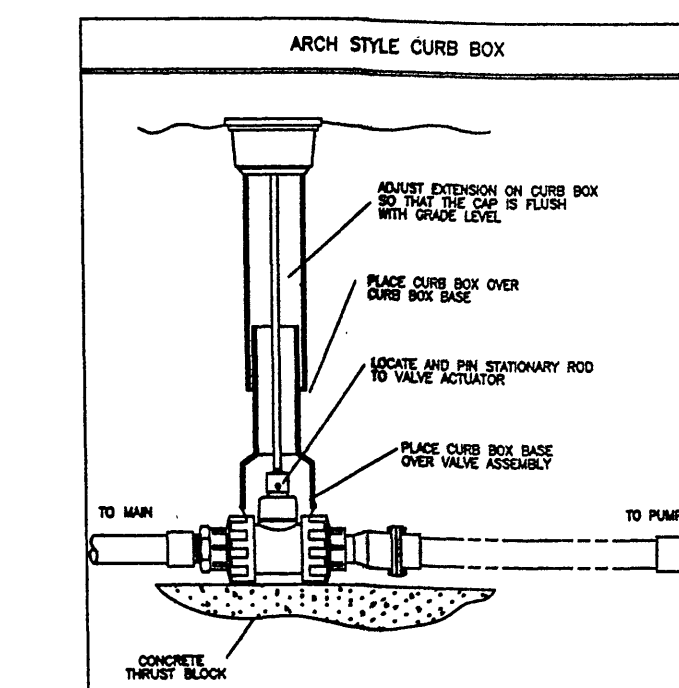
1. THE LOW PRESSURE COMMON FORCEMAIN SYSTEM SHOWN HEREON IS DESIGNED TO PROVIDE PRESSURIZED SEWER SERVICE FOR THE 16 RESIDENTIAL LOTS LOCATED ALONG THE SHORELINE OF SMITH MOUNTAIN LAKE. THE SYSTEM HAS BEEN SPECIFICALLY DESIGNED SUCH THAT EACH RESIDENTIAL LOT WILL UTILIZE A STANDARDIZED E-ONE 2010-74 GRINDER PUMP STATION.
 2. THE DEVELOPER AND OR RESIDENTIAL LOT OWNER WILL BE REQUIRED TO OBTAIN A COPY OF THIS SHEET THE WINDWARD @ pointe cheli COMMUNITY SEWER SYSTEM IN ORDER TO PROCURE A SEWER SYSTEM PERMIT FROM FRANKLIN COUNTY HEALTH DEPARTMENT AND BUILDING PERMIT FROM FRANKLIN COUNTY. COPIES OF THIS SHEET AND CONSTRUCTION SPECIFICATIONS SHALL BE OBTAINED FROM SHRADER ENGINEERING, PROJECT ENGINEER AND WASTEWATER CONSULTANT.
 3. INSTALLATION OF THE E-ONE GRINDER PUMP SYSTEM AND SERVICE CONNECTION SHALL ADHERE TO THE MINIMUM STANDARDS SET FORTH WITHIN THESE CONSTRUCTION DRAWINGS AND AS SPECIFIED BY THE MANUFACTURER. THE DEVELOPER, BUILDER OR LOT OWNER SHALL REFER TO THE CONSTRUCTION DRAWINGS CONTAINED HEREIN FOR SPECIFIC LOCATION AND INSTRUCTIONS FOR CONNECTION TO THE COMMON LOW PRESSURE FORCEMAIN.
 4. AUDIO AND VISUAL ALARMS SHALL BE LOCATED WITHIN EACH RESPECTIVE RESIDENCE.
 5. INSTALLATION OF THE PACKAGED GRINDER PUMP STATION AND PRESSURE FORCEMAIN SERVICE CONNECTION SHALL BE PERFORMED BY A LICENSED PLUMBER AND ELECTRICIAN AS DICTATED AND ENFORCED BY FRANKLIN COUNTY BUILDING DEPARTMENT.
 6. AFTER INSTALLATION, THE BUILDER OR DEVELOPER SHALL CONTACT SHRADER ENGINEERING TO SCHEDULE AN ON-SITE INSPECTION OF THE GRINDER PUMP STATION INSTALLATION.
- PRIOR TO INSTALLATION, THE SYSTEM SHALL BE FULLY COMPLETE AND TESTED BY THE CONTRACTOR. ALL PUMPS, ALARMS, AND CONTROLS SHALL BE VERIFIED AS TO PROPER FUNCTION. AFTER VERIFICATION, THE CONTRACTOR SHALL DEACTIVATE THE PUMP STATION AND FILL IT WITH WATER. THE CONTRACTOR SHALL CONTACT SHRADER ENGINEERING TO SCHEDULE AN INSPECTION. INSPECTION SHALL INCLUDE VERIFICATION THAT ALL ALARMS, CONTROLS, AND THE PUMP ARE FUNCTIONING CORRECTLY.
7. THE GRINDER PUMP STATION SHALL NOT BE INSTALLED WITHIN ANY RESIDENTIAL STRUCTURE. THE GRINDER STATION SHALL BE LOCATED SUCH THAT ITS TOP ELEVATION IS LOWER THAN THE LOWEST FINISHED FLOOR ELEVATION WITHIN THE RESIDENCE.
 8. SHRADER ENGINEERING SHALL FURNISH AN INSPECTION CERTIFICATION TO THE FRANKLIN COUNTY HEALTH DEPARTMENT AND THE CONTRACTOR AFTER COMPLETION OF THE SITE INSPECTION.

TYPICAL PVC SCH. 40 LATERAL INSTALLATION



MODEL 2010
(NOTE: BALLAST NOT SHOWN)

INSTALL ALL UNDER GROUND PIPING PER ASTM D 2321-89
INSTALL GRINDER PUMP STATION PER GRINDER PUMP INSTALLATION INSTRUCTIONS
A - INCLUDED IN LATERAL KIT



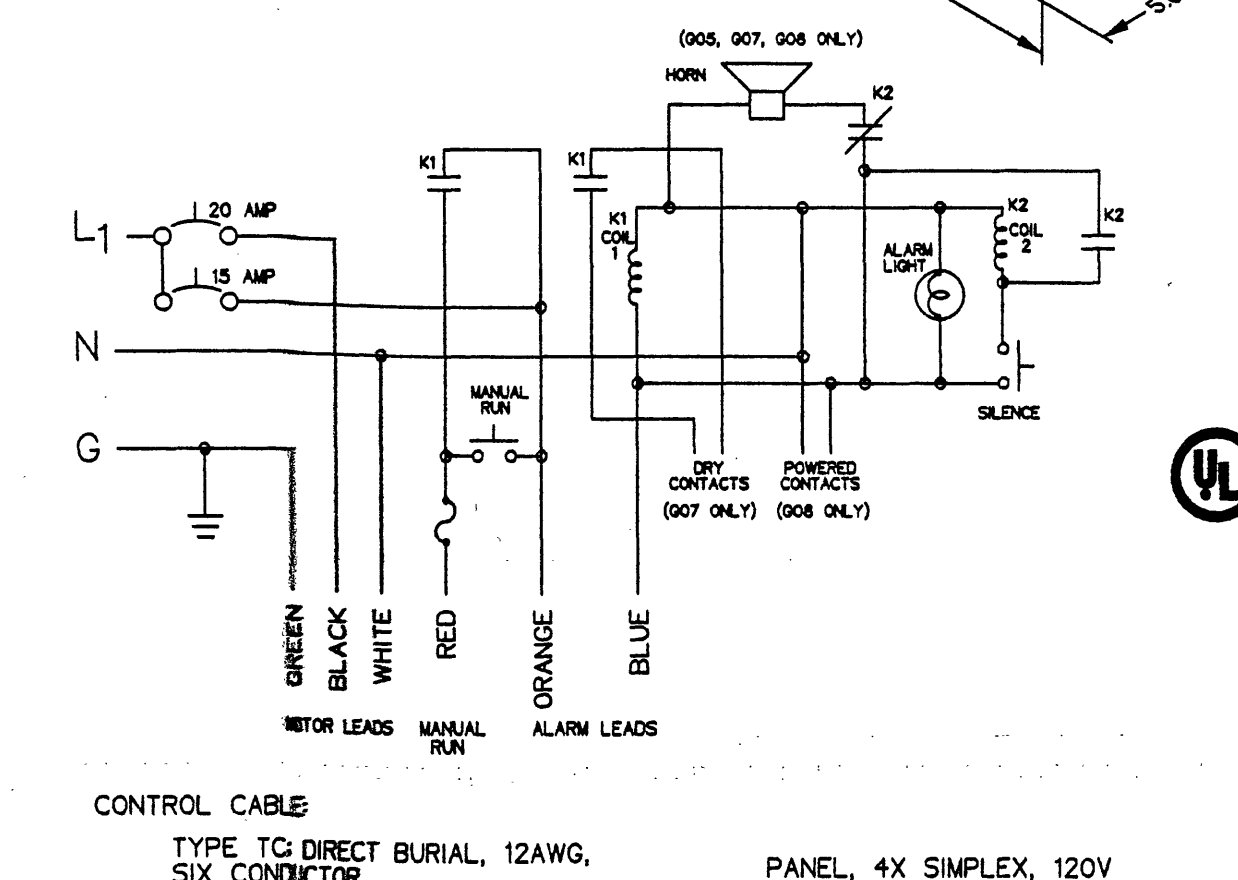
TYPICAL PVC LATERAL INSTALLATION
PVC SCHEDULE 40 PIPE, ARCH STYLE

PUMP STATION CONTROL BOX

SIMPLEX MOD 250

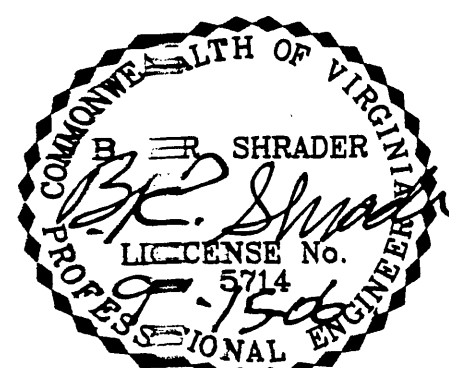
REDUNDANT RUN (HIGH LEVEL)
VISUAL & AUDIBLE ALARM
MANUAL SILENCE
MANUAL RUN
120VAC
4X FIBERGLASS ENCLOSURE

AVAILABLE CONFIGURATIONS:
G05 - STANDARD
G06 - WITHOUT HORN
G07 - WITH DRY CONTACTS
G08 - WITH POWERED CONTACTS



CONTROL CABLE
TYPE TO DIRECT BURIAL, 12AWG,
SIX CONDUCTOR

PANEL, 4X SIMPLEX, 120V



SHRADER ENGINEERING & LAND SURVEYING, INC.

119 S. BRIDGE ST.
BEDFORD, VA.
PHONE (540) 586-4710

P. O. BOX 647
24523
FAX (540) 586-5407

LAST REVISION 9/15/06

E-ONE SEWER DETAILS FOR
THE WINDWARD
@ POINTE CHELI
GILLS CREEK DIST., FRANKLIN CO., VA.
DATE: JUNE 23, 2006
TAX ID.# 15-47.1
WPC-WS.DWG SHEET 4 OF 6