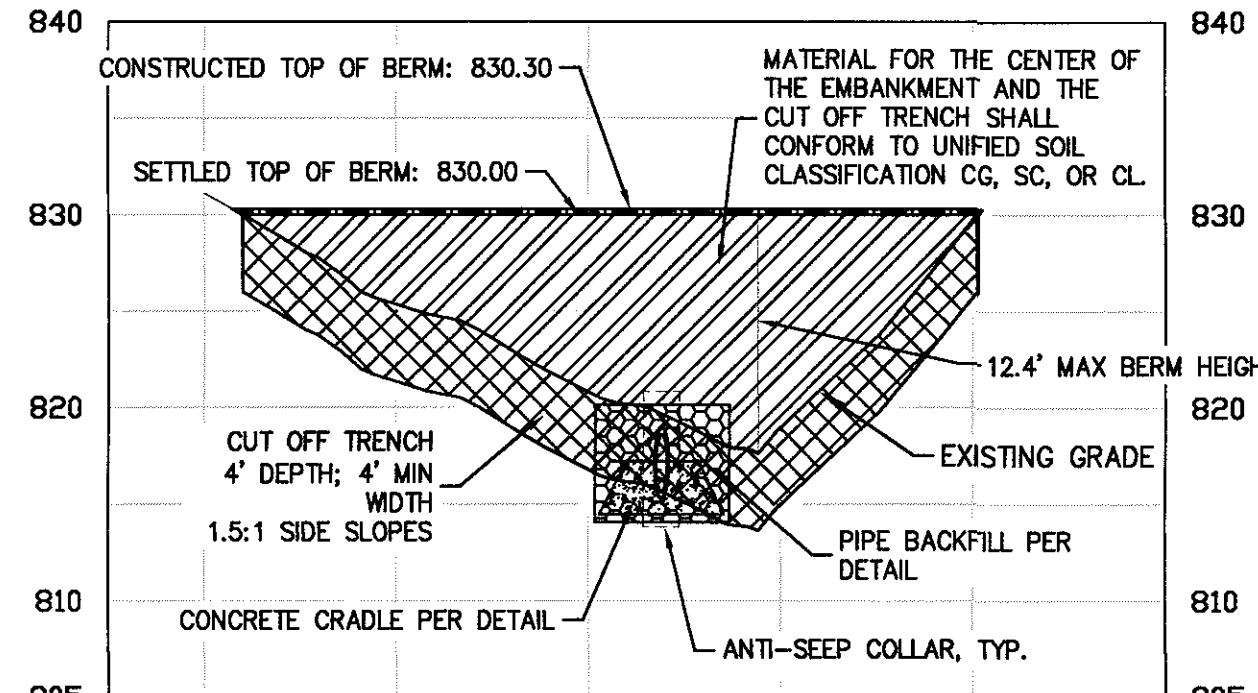
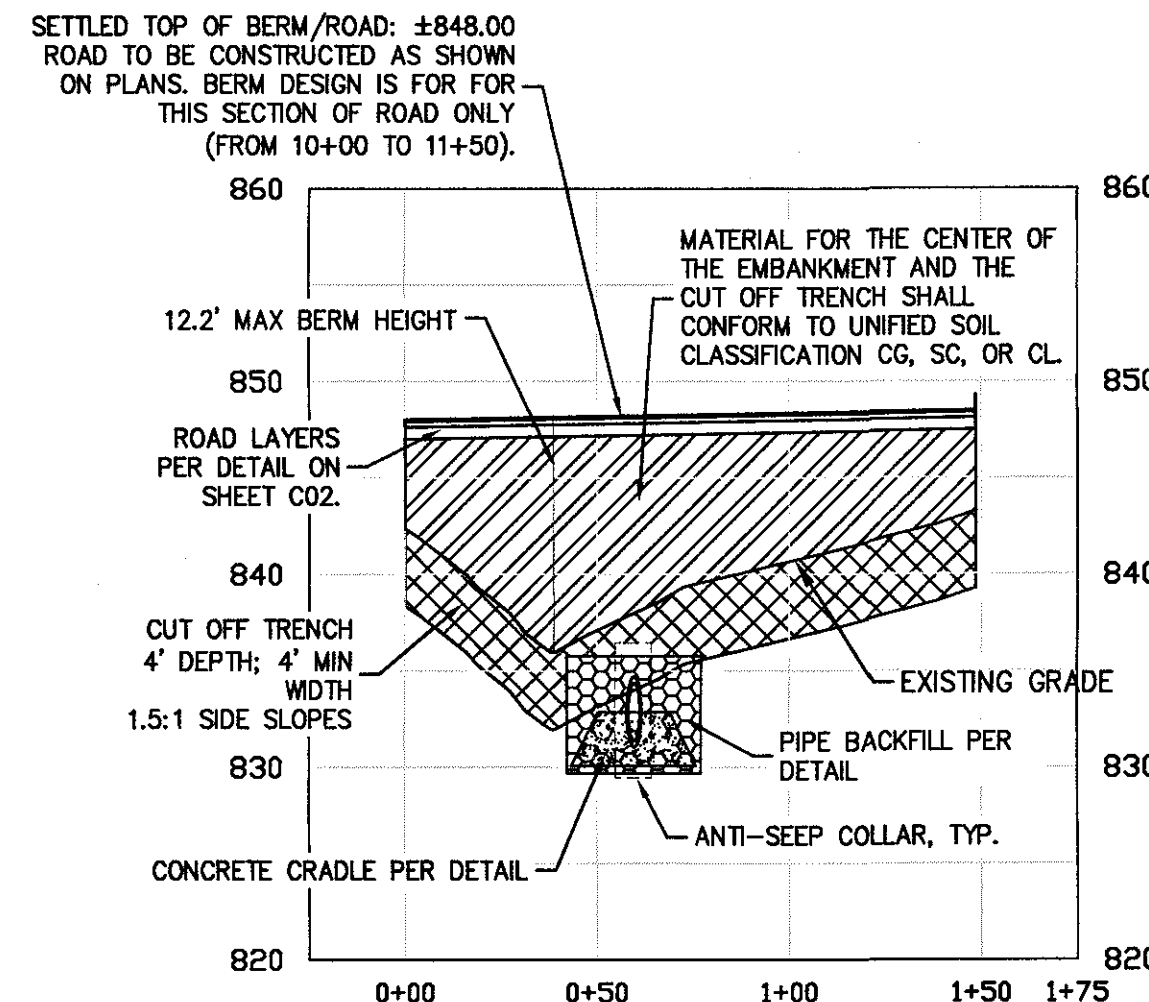


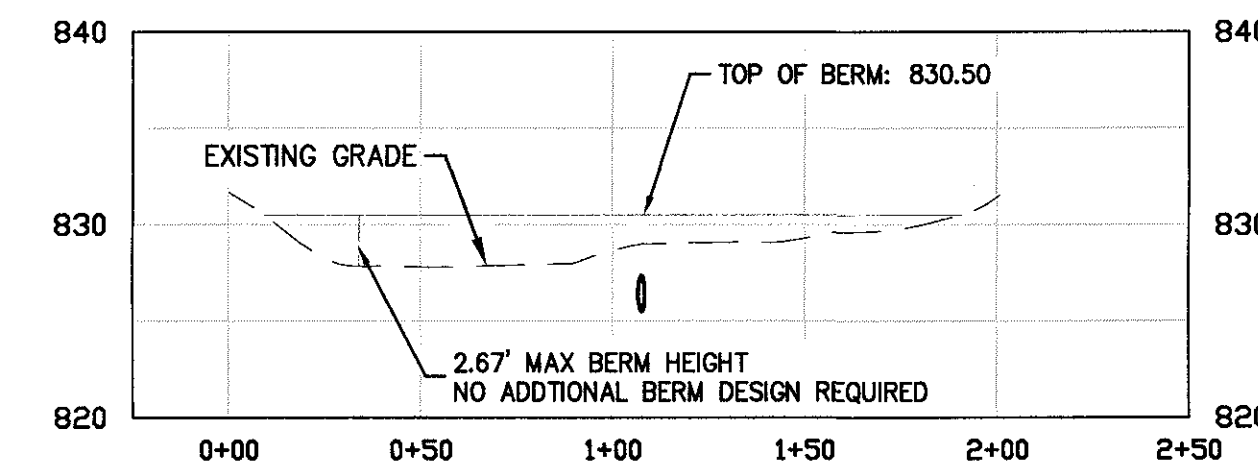
POND 1 BERM PROFILE
1" = 30' Horizontal
1" = 6' Vertical



POND 2 BERM PROFILE
1" = 30' Horizontal
1" = 6' Vertical

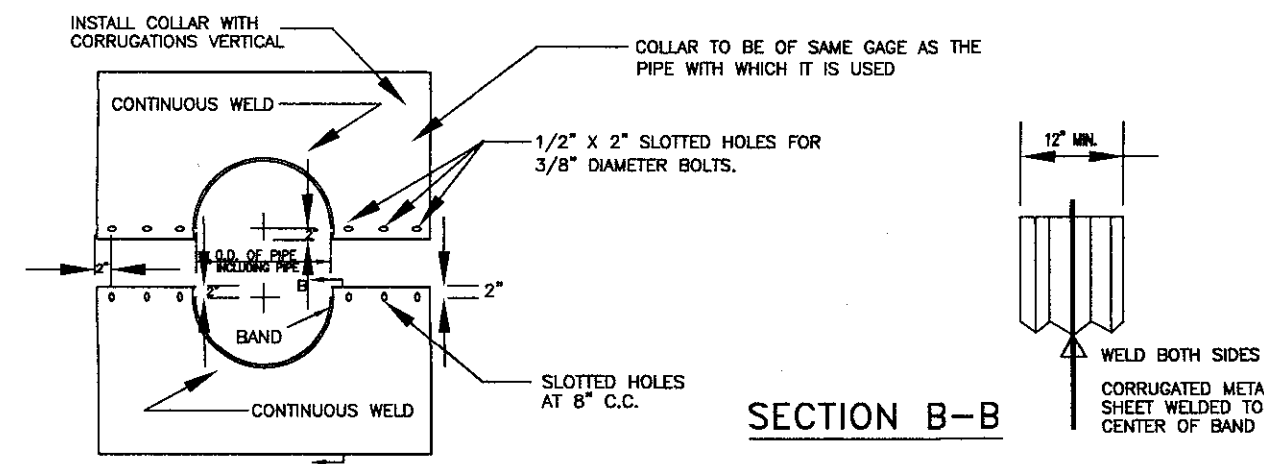


POND 3 BERM PROFILE
1" = 30' Horizontal
1" = 6' Vertical



POND 4 BERM PROFILE
1" = 30' Horizontal
1" = 6' Vertical

DETAILS OF CORRUGATED METAL ANTI-SEEP COLLAR



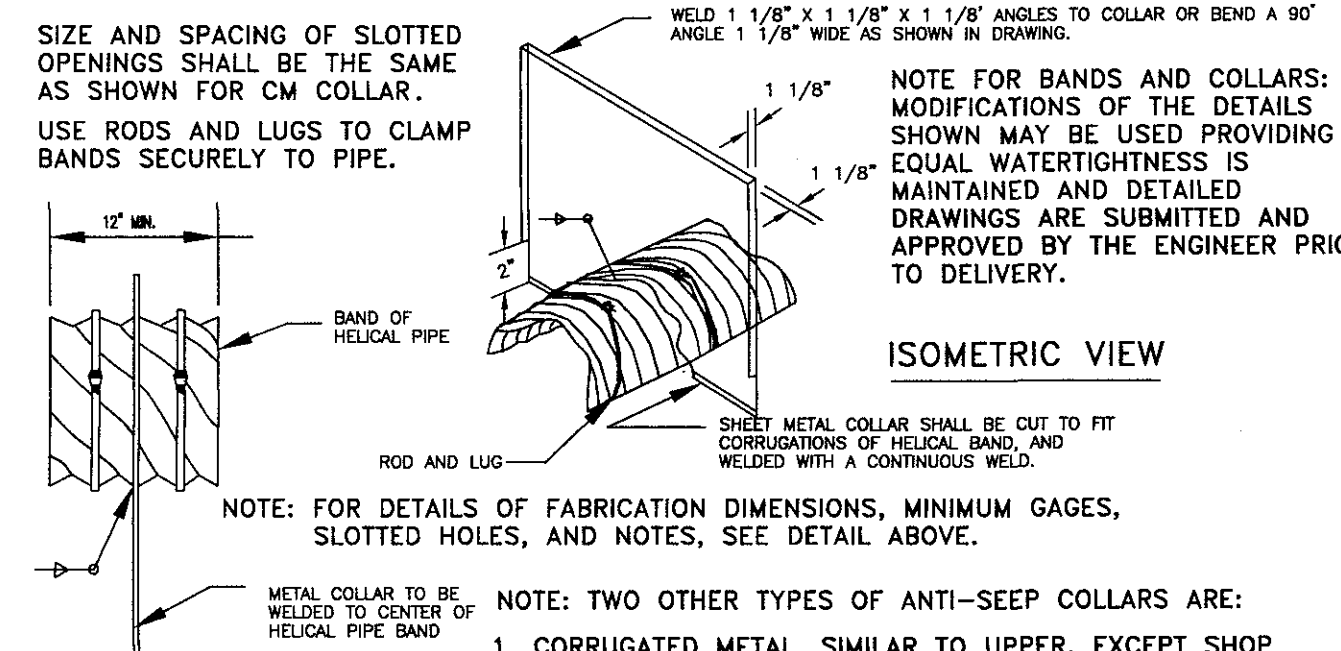
SECTION B-B

ELEVATION OF UNASSEMBLED COLLAR

NOTES FOR COLLARS:

1. ALL MATERIALS TO BE IN ACCORDANCE WITH CONSTRUCTION AND CONSTRUCTION MATERIAL SPECIFICATIONS.
2. WHEN SPECIFIED ON THE PLANS, COATING OF COLLARS SHALL BE IN CONSTRUCTION WITH CONSTRUCTION AND CONSTRUCTION MATERIAL SPECIFICATIONS.
3. UNASSEMBLED COLLARS SHALL BE MARKED BY PAINTING OR TAGGING TO IDENTIFY MATCHING PAIRS.
4. THE LAP BETWEEN THE TWO HALF SECTIONS AND BETWEEN THE PIPE AND CONNECTING BAND SHALL BE CAULKED WITH ASPHALT MASTIC AT TIME OF INSTALLATION.
5. EACH COLLAR SHALL BE FURNISHED WITH TWO 1/2" DIAMETER RODS WITH STANDARD TANK LUGS FOR CONNECTING COLLARS TO PIPE.

DETAIL OF HELICAL PIPE ANTI-SEEP COLLAR



ISOMETRIC VIEW

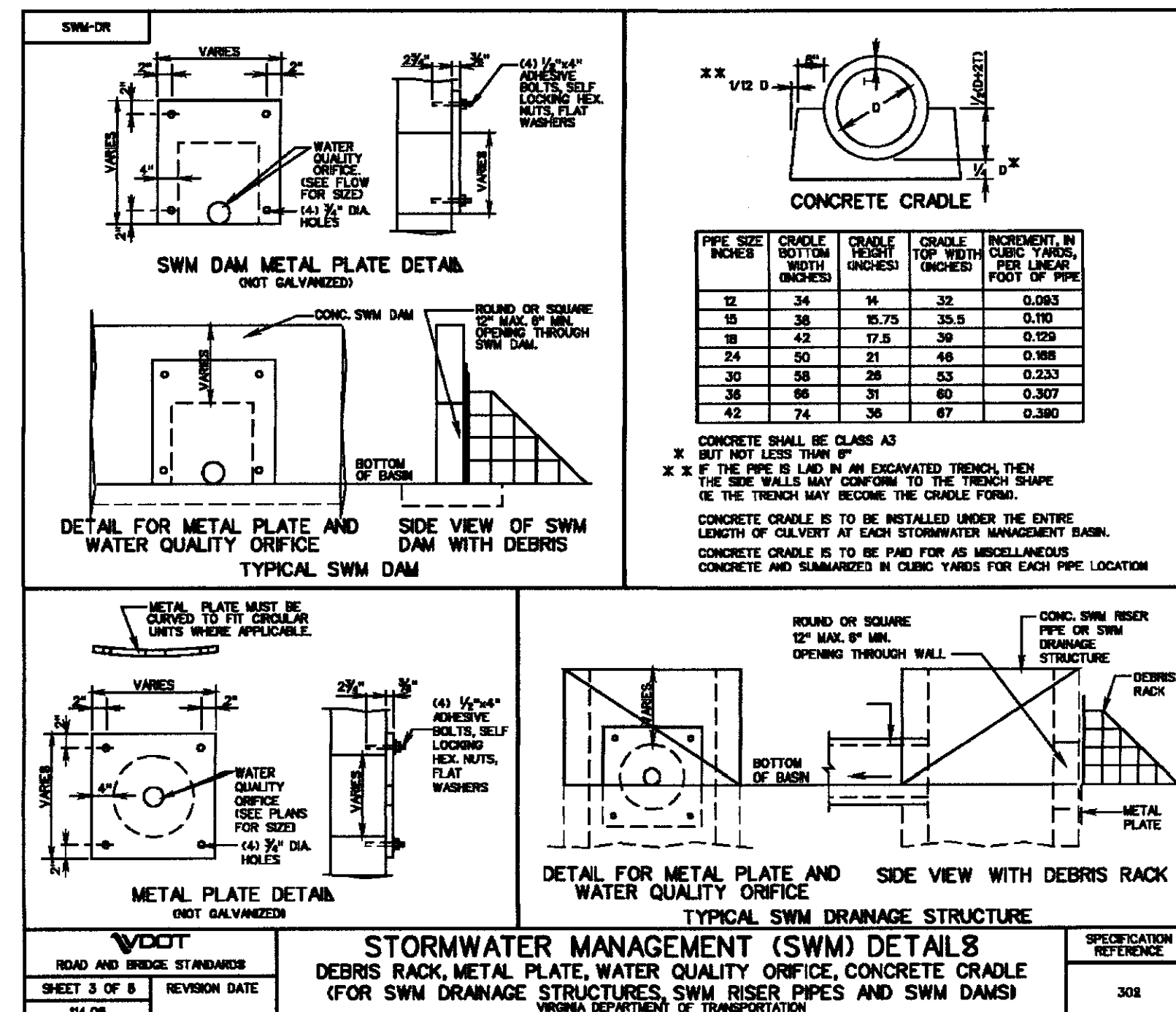
NOTE: FOR DETAILS OF FABRICATION DIMENSIONS, MINIMUM GAGES, SLOTTED HOLES, AND NOTES, SEE DETAIL ABOVE.

- NOTE: TWO OTHER TYPES OF ANTI-SEEP COLLARS ARE:
1. CORRUGATED METAL, SIMILAR TO UPPER, EXCEPT SHOP WELDED TO A SHORT (4FT.) SECTION OF THE PIPE AND CONNECTED WITH CONNECTING BANDS TO THE PIPE.
 2. CONCRETE, SIX INCHES THICK FORMED AROUND THE PIPE WITH #3 REBAR SPACED 15" HORIZONTALLY AND VERTICALLY.

PARTIAL ELEVATION
REF: ENGR. FIELD MANUAL

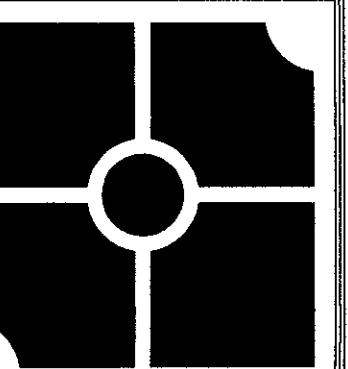
SOURCE: USDA-SCS

PLATE. 3.14-13



STORMWATER MANAGEMENT (SWM) DETAIL 8
DEBRIS RACK, METAL PLATE, WATER QUALITY ORIFICE, CONCRETE CRADLE
(FOR SWM DRAINAGE STRUCTURES, SWM RISER PIPES AND SWM DAMS)

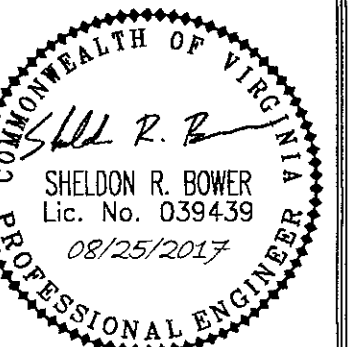
SPECIFICATION
REFERENCE
308



parker
DESIGN GROUP

2122 Carolina Ave. SW
Roanoke, VA 24014
Ph: 540-387-1153
Fax: 540-389-5767
1915-B W. Cary Street
Richmond, VA 23220
Phone: 804-358-2947
Fax: 804-359-9645
www.parkerdg.com

These documents are the property of Parker Design Group (PDG) and may not be reproduced or used without the express permission of PDG. Any reuse of these documents without authorization of PDG will be at the sole risk of the individual or entity utilizing said documents.



KENNEDY SHORES
SUBDIVISION DEVELOPMENT PLAN
Tax # 0510001500
Franklin County, Virginia

REVISIONS:
2/10/2017 - 1ST SUB COMMENTS
3/21/2017 - 2ND SUB COMMENTS
4/12/2017 - 3RD SUB COMMENTS
6/23/2017 - FIELD REVISION #1
7/6/2017 - FIELD REVISION #2
8/4/2017 - FIELD REVISION #3
8/9/2017 - FIELD REVISION #4
8/25/2017 - FIELD REVISION #5

DESIGNED BY: JMM/SRB

DRAWN BY: JMM/JLK

CHECKED BY: SRB

DATE:
6 JANUARY, 2017

SHEET TITLE:
POND EMBANKMENT
PROFILES AND DETAILS

SCALE:
NTS

SHEET NO.

C30B