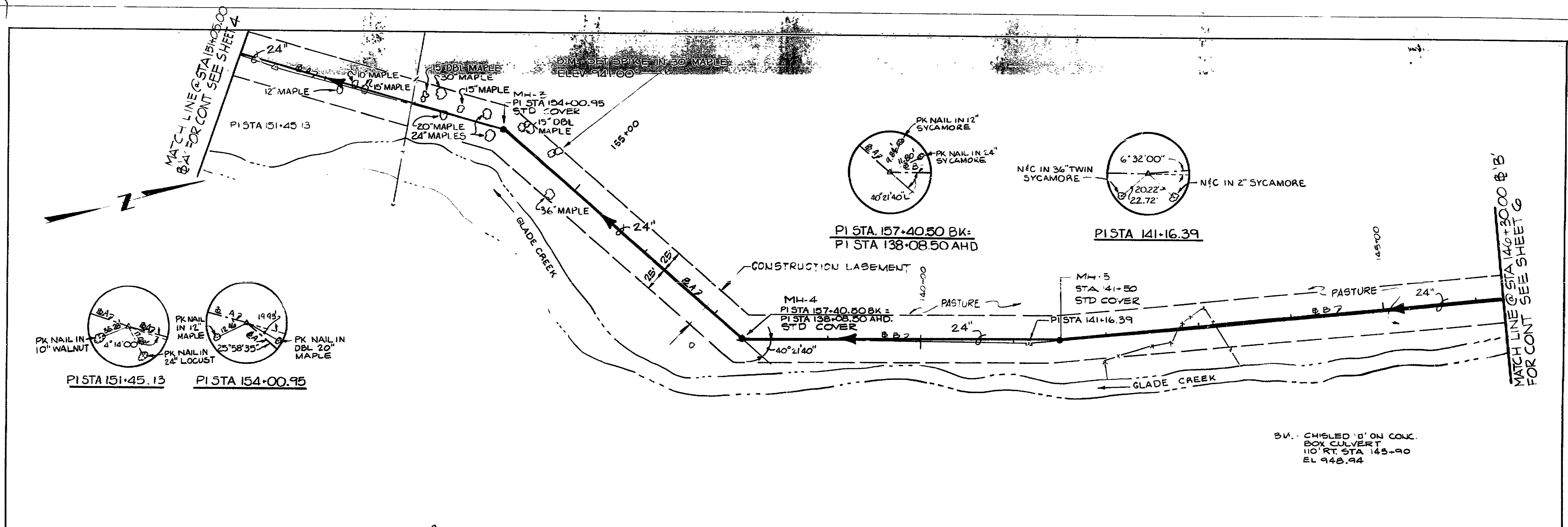
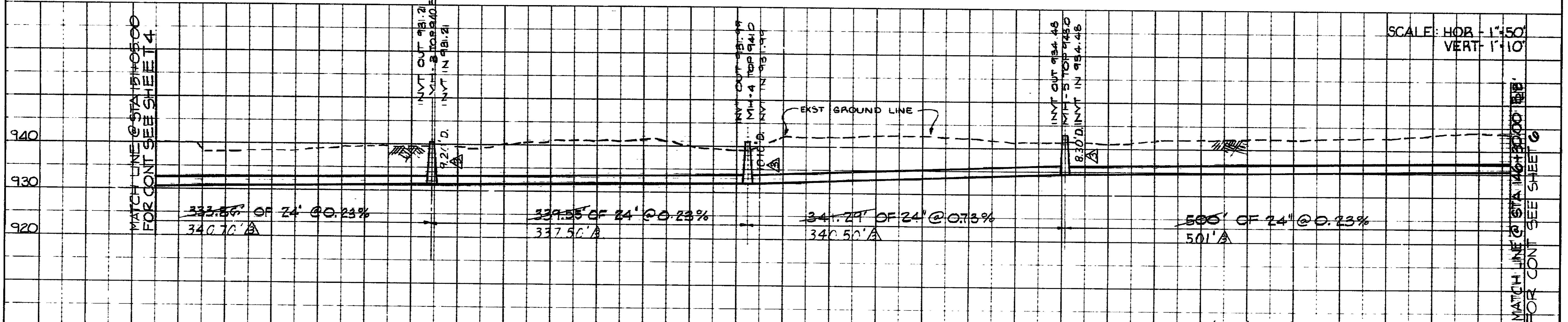


PLAN
 NOTES:
 1. ALIGNMENT CHANGED
 2. PK NAIL IN 10" WALNUT
 3. PK NAIL IN 24" LOCUST
 4. PK NAIL IN 12" MAPLE
 5. PK NAIL IN 24" MAPLE
 6. PK NAIL IN 12" SYCAMORE
 7. PK NAIL IN 24" SYCAMORE



PROFILE
 NOTES:
 1. SLOPE CHANGED
 2. INV. OUT 981.2
 3. INV. IN 981.2
 4. INV. OUT 984.45
 5. INV. IN 984.45



REVISION		DATE	DESCRIPTION	BY	APP
1			REV ED PER 'AS BUILT PLANS"		
DESIGNED	JWC	GLADE CREEK SANITARY SEWER INTERCEPTOR			
DRAWN	HJA	81-1-S			
CHECKED	JWC	ROANOKE COUNTY, VIRGINIA			
APPROVED	JWC	Mattern and Craig			
SUBMITTED	JWC	CONSULTING ENGINEERS			
		SCALE AS NOTED	COMM. NO.	365	
		DATE AUGUST '81	SHEET 5 OF 18		

