

PROJECT MANAGER Scott Woodcum, PE 540-375-3580
 SURVEYED BY Woolpert Inc. and Rice Associates
 DESIGN SUPERVISED BY Michael Hoasbang, LPE 571-633-2225
 DESIGNED BY STL Incorporated 571-633-2220

LIMITED ACCESS HIGHWAY By Resolution of Highway Commission dated October 4, 1956

u16595018(6).dgn

LIMITED ACCESS HIGHWAY Plotted By: Keenan By Resolution of Commonwealth Transportation Board dated January 1, 1987

SUBSURFACE UTILITY OWNERS

APPALACHIAN POWER
 802 RIVER AVENUE
 ROANOKE, VA 24022

INTELOS
 1900 ROANOKE ROAD
 P.O. BOX 174
 DALEVILLE, VA 24083

WESTERN VIRGINIA WATER AUTHORITY
 601 SOUTH JEFFERSON STREET
 ROANOKE, VA 24011

COX COMMUNICATIONS
 5404 FALLON LANE
 ROANOKE, VA 24036

ROANOKE GAS
 615 KIMBALL AVENUE
 ROANOKE, VA 24030

NETWORK-OPERATIONS
 ONE TECHNOLOGY CENTER
 100 SOUTH CINCINNATI AVENUE
 TULSA, OK 74103

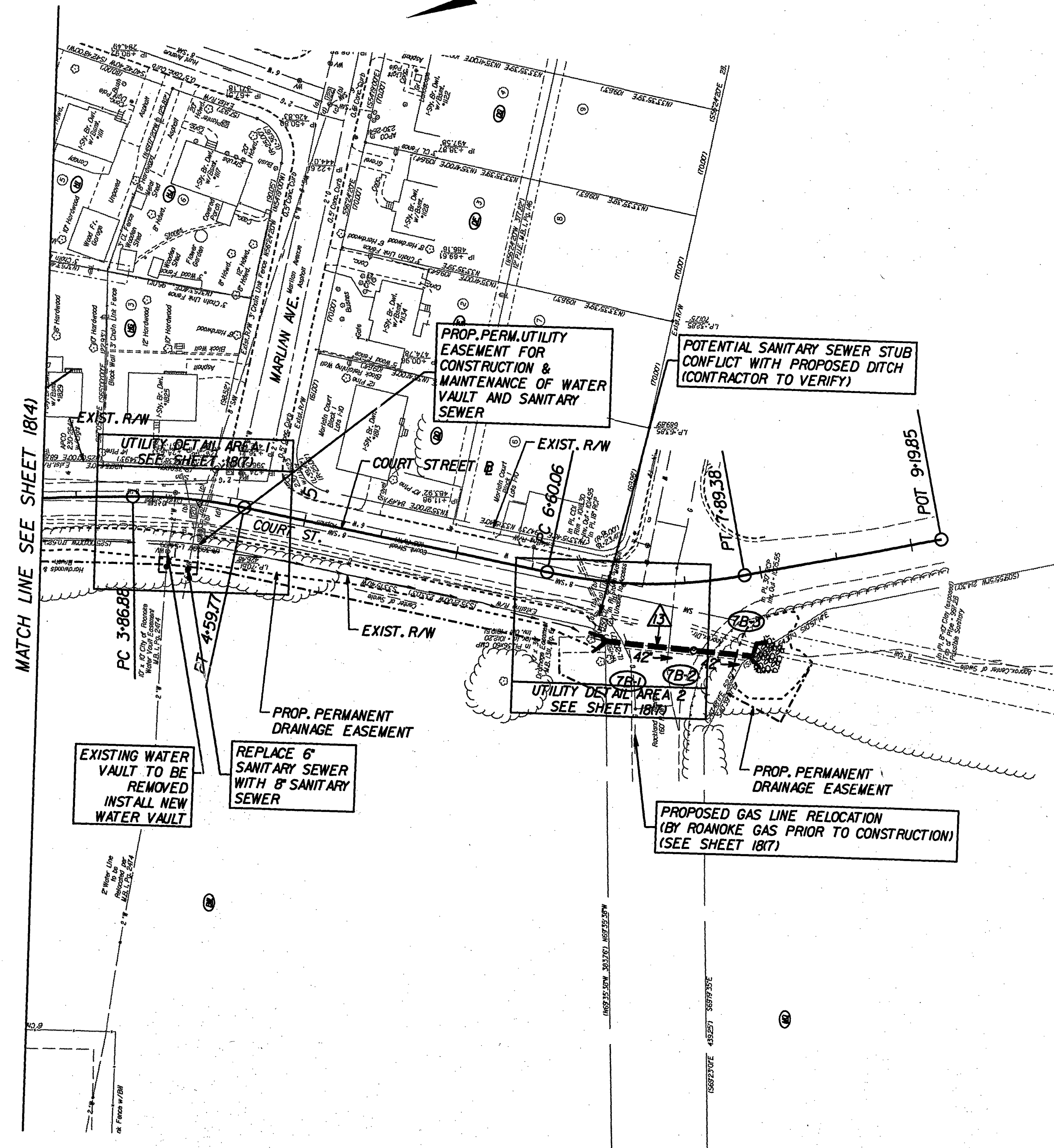
VERIZON
 4843 OAKLAND BOULEVARD
 ROANOKE, VA 24030

KENTUCKY DATA LINK
 225 FRANKLIN ROAD SW
 ROANOKE, VA 24011

CONSTRUCTION PLAN
APPROVED
 FOR CONSTRUCTION BY THE
 WESTERN VIRGINIA WATER
 AUTHORITY
 Approved By: *David C. [Signature]* Date: 4-9-14

ANDERSON & ASSOCIATES
 BLACKSBURG, VIRGINIA
 (UTILITY)

DESIGN FEATURES RELATING TO CONSTRUCTION
 OR TO REGULATION AND CONTROL OF TRAFFIC
 MAY BE SUBJECT TO CHANGE AS DEEMED
 NECESSARY BY THE DEPARTMENT



Note: Figures in parenthesis and dot-dot-dashed lines denote Temporary Easements.

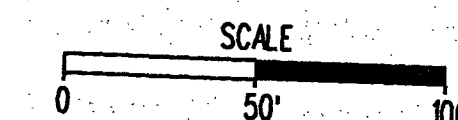
Note: Figures in brackets and dot-dashed lines denote Permanent Easements.

C Denotes Construction Limits in Cuts

F Denotes Construction Limits in Fills

THE
LANE
 CONSTRUCTION
 CORPORATION

FINAL PLANS



PROJECT
 0581-128-109
 SHEET NO.
 18(6)